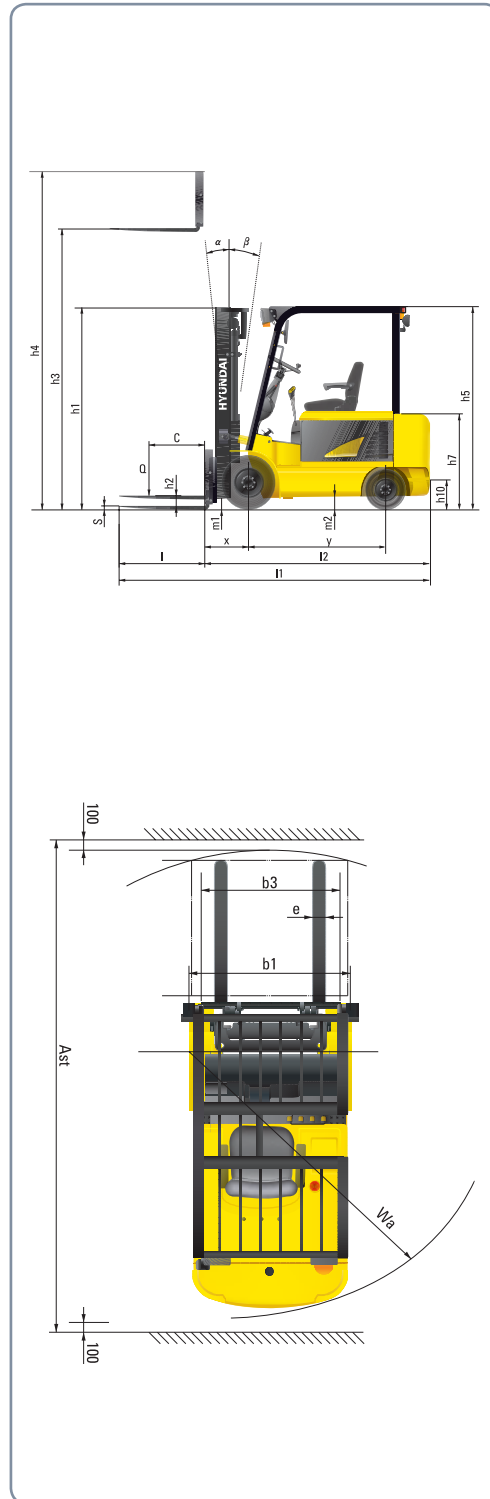


## Dimension



## Specification

### Identification

1.1	Manufacturer					
1.2	Manufacturer's type designation	22B-7	25B-7	30B-7	32B-7	
1.3	Drive : electric (battery or mains) / diesel / petrol / fuel gas, manual	Electric	Electric	Electric	Electric	
1.4	Type of operation : hand, pedestrian, standing, seated, order - picker	Seated	Seated	Seated	Seated	
1.5	Load capacity / rated load	Q kg	2,200	2,500	3,000	3,200
1.6	Load center distance	c mm	500	500	500	500
1.8	Load distance, center of drive axle to fork	x mm	458	458	458	458
1.9	Wheelbase	y mm	1,400	1,400	1,560	1,560

### Weights

2.1	Service weight	kg	3,940	4,290	4,660	4,856
2.2	Axle loading, loaded front / rear	kg	5,451 / 689	5,894 / 896	6,701 / 959	7,015 / 1,041
2.3	Axle loading, unloaded front / rear	kg	1,727 / 2,213	1,662 / 2,628	1,830 / 2,830	1,819 / 3,037

### Wheels, Chassis

3.1	Tires : solid rubber(V), superelastic(SE), pneumatic(PI), polyurethane(PE)		SE, P	SE, P	SE, P	SE, P
3.2	Tire size, front(φ x width)		23 x 9 - 10	23 x 9 - 10	23 x 9 - 10	23 x 9 - 10
3.3	Tire size, rear(φ x width)		18 x 7 - 8	18 x 7 - 8	18 x 7 - 8	18 x 7 - 8
3.5	Wheels, number front/rear(x = driven wheels)		2 x / 2	2 x / 2	2 x / 2	2 x / 2
3.6	Track width, front	mm	993	993	993	993
3.7	Track width, rear	mm	980	980	980	980

### Basic Dimensions

4.1	Mast / fork carriage tilt forward / backward	degrees	6 / 10	6 / 10	6 / 10	6 / 10
4.2	Lowered mast height	h1 mm	2,152	2,152	2,152	2,152
4.3	Free lift	h2 mm	115	115	115	115
4.4	Lift height	h3 mm	3,300	3,300	3,300	3,200
4.5	Extended mast height	h4 mm	4,485	4,485	4,485	4,385
4.7	Overhead load guard (cab) height	h5 mm	2,220	2,220	2,230	2,230
4.8	Seat height / Standing height	h7 mm	1,180	1,180	1,180	1,180
4.12	Coupling height	h10 mm	325	325	325	325
4.19	Overall length	l1 mm	3,320	3,375	3,592	3,612
4.20	Length to face of forks	l2 mm	2,270	2,325	2,542	2,562
4.21	Overall width	b1 mm	1,200	1,200	1,200	1,200
4.22	Fork dimensions	s / e / l mm	45 x 100 x 1,050		45 x 122 x 1,050	
4.23	Fork carriage ISO 2328, class / type A, B		II / A	II / A	III / A	III / A
4.24	Fork - carriage width	b3 mm	1,102	1,102	1,102	1,102
4.31	Ground clearance, loaded, under mast	m1 mm	107	107	107	107
4.32	Ground clearance, centre of wheelbase	m2 mm	130	130	130	130
4.33	Aisle width for pallets 1,000 x 1,200 crossways	Ast mm	3,560	3,595	3,800	3,820
4.34	Aisle width for pallets 800 x 1,200 length ways	Ast mm	3,360	3,395	3,600	3,620
4.35	Turning radius	Wa mm	1,865	1,900	2,120	2,140
4.36	Smallest pivot point distance	mm	-	-	-	-

### Performance Data

5.1	Travel speed, loaded / unloaded (48V)	km/h	17 / 18	17 / 18	17 / 18	17 / 18
	(36V)	km/h	13 / 15	13 / 15	13 / 15	13 / 15
5.2	Lift speed, loaded / unloaded (48V)	mm/s	430 / 610	410 / 610	340 / 500	330 / 500
	(36V)	mm/s	310 / 500	300 / 500	250 / 410	240 / 410
5.3	Lowering speed, loaded / unloaded	mm/s	500 / 450	500 / 450	500 / 450	500 / 450
5.5	Drawbar pull, loaded / unloaded S2 60 min	N	-	-	-	-
5.6	Max. drawbar pull, loaded / unloaded S2 5 min	N	-	-	-	-
5.7	Gradient performance, loaded / unloaded S2 30 min	%	-	-	-	-
5.8	Max. gradient performance, loaded / unloaded S2 5 min	%	38 / 20	34 / 18	29 / 18	28 / 17
5.9	Acceleration time, loaded / unloaded	-	-	-	-	-
5.10	Service brake		Hyd.	Hyd.	Hyd.	Hyd.

### E - Motor

6.1	Drive motor rating S2 60 min (48V)	kW	7.8 x 2	7.8 x 2	7.8 x 2	7.8 x 2
	(36V)	kW	-	-	-	-
6.2	Pump motor rating at S3 - 15% (48V)	kW	18	18	18	18
	(36V)	kW	-	-	-	-
6.4	Battery voltage, nominal capacity K5 (48V)	V/Ah	660	715	740	740
	(36V)	V/Ah	-	-	-	-
6.5	Battery weight (min)	kg	1,040	1,100	1,270	1,270
	Battery compartment dimensions L / W / H	mm	1,070 / 806 / 540		1,070 / 1,000 / 540	
6.6	Type of drive control		AC	AC	AC	AC



■ Some of the photos may include optional equipment.

FORKLIFT TRUCKS Environmentally - Friendly

# 22/25/30/32B-7 AC

**HYUNDAI | FORKLIFT**  
HEAVY INDUSTRIES CO., LTD.

Head Office(Sales Office)  
14th FL., HYUNDAI BLDG. 140-2, KYE-DONG, JONGNO-GU, SEOUL, KOREA 110-793  
Tel (82) (2) 746-4526, 4529 Fax (82) (2) 746-7444-7445

Americas Operation : Hyundai Construction Equipment Americas, Inc.  
955 ESTES AVENUE, ELK GROVE VILLAGE IL, 60007 Tel (1) 847-437-3333 Fax (1) 847-437-3574

Europe Operation : Hyundai Heavy Industries Europe N.V.  
VOSSENDAAL 11, 2440 GEEL, BELGIUM Tel (32) 14-56-2200 Fax (32) 14-59-3405

PLEASE CONTACT

www.hyundai-ce.com

2010. 09 Rev.2

**HYUNDAI**  
HEAVY INDUSTRIES CO., LTD.

We build a better future



## New Criterion of Forklift Trucks

Hyundai introduces a new line of 7-series battery forklift trucks. Excellent power and performance makes your business more profitable.



■ Some of the photos may include optional equipment.



# The New AC Control B Series

Designed with a durable frame and built to offer excellent stability and a smooth ride, AC Control B Series trucks are real workhorses.



■ Some of the photos may include optional equipment.

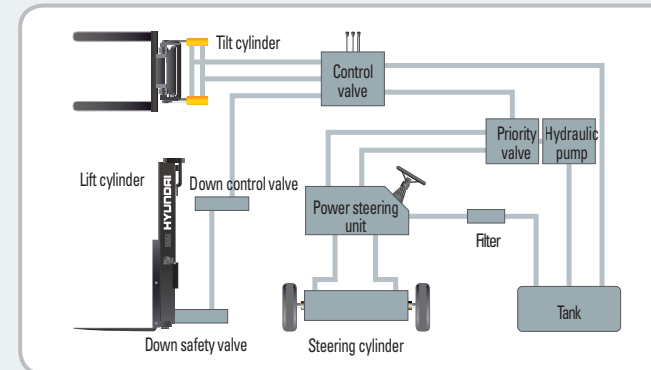
## Superior Power & Optimal Performance

Efficient, smooth running and ergonomically designed AC control series are built to meet your needs.



### Fork Safety Features

When the forks are being lowered, a down-control valve maintains the controlled speed. The down-safety valve prevents forks from dropping down in case of sudden damage of hydraulic line.



### State-of-the-art hydraulic System

The latest large-capacity hydraulic system reacts quickly during operation, and a low noise control valve increases both efficiency and durability.

### Anti-Rollback System, Faster Travel Speed & Gradeability

ZAPI's anti-rollback system provides safe ramp operation plus exceptional ramp start capabilities. The powerful high-output motors provide greater acceleration, better gradeability and faster travel speed on any tough terrain or slope.



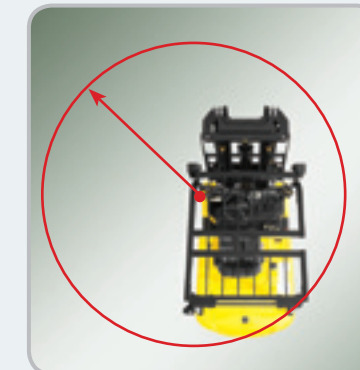
### Increased Mast tilting Angle

The mast tilting angle of 6 degrees forward and 10 degrees backward, the operator can rapidly perform loading and unloading jobs safely.



### Wet Disc Brake System

The wet disc brake system is virtually maintenance free and is enclosed to protect from dust and water.



### 4-Wheel Center Pivot

The newly designed 4-wheel center pivot allows the forklift to navigate with an extremely small turning radius compared to other forklifts.



### Fully Hydrostatic Power Steering

A hydraulic steering system ensures smooth & precise steering which prevents kick-back.



### OPSS (Operator Presence Sensing System)

Control of mast tilting, lifting and lowering is not possible through operation of the appropriate control when the operator is not in the seat.

## High Technology ZAPI Controller Eliminate "almost noiseless"

The efficient, 8Khz(high frequency) ZAPI controller provides smooth operation and protection for low & high voltage, overheating and fault recording.

- Features**
- Regeneration : Direction change, Deceleration, Braking
  - The new AC motors offers a of 10% greater efficiency than traditional DC motors
  - Various performance models are available to maximize efficiency and equipped to work in all types of operations
  - Enhanced Efficiency
    - H (High) Mode, N (Normal) Mode, E (Economic) Mode
  - Turtle Mode : 10km/h



### Travel Speed (MAX)

Model	km/h
22B-7	18
25B-7	18
30B-7	18
32B-7	18

### Gradeability (MAX)

Model	%
22B-7	38
25B-7	34
30B-7	29
32B-7	28



## Comfortable Operation

A design based on human engineering relieves fatigue and increases operator's efficiency.



### Adjustable Steering Wheel

Steering wheel can be adjusted by a lever on the right-hand side for the most comfortable operator position.



### High visibility for safe operation

The operator is able to work with increased safety and accuracy due to a wider view.



### Easy Control Direction Lever

Finger tip control of forward and reverse lever allows the operator to remain in control of equipment.



### Multi-Functional Switch

Integrated multi-functional switch lever enables the driver to operate lights and horn conveniently.

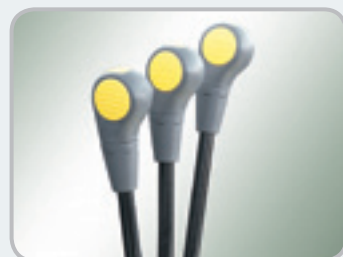
### Perfect Compartment Fit For Any Operator

An ergonomically designed operator's compartment enables the driver to select the most comfortable working position for increased productivity.



### Optimum Pedal Position & Non-slip Mat

Based on human engineering, the accelerator and brake pedals are optimally positioned for convenience while operating the equipment.



### Prompt Response of Operating Control Levers

Only minimal operator's effort is required for precise, safe and productive control.

### Easily Adjustable Suspension Seat

An attractive and adjustable seat, based on a human engineering design, provides greater comfort, safety and durability.

- Options : Seat belt, Arm rest, Hip restraint



### AC Control System Features

- Excellent Control Ability
  - Various performance modes to meet all working conditions
  - Slow rolling on ramp & ramp start
- Enhanced motor efficiency & Excellent regeneration

Some of the photos may include optional equipment.



### Self - diagnostic LCD Monitor

The LCD monitor has a back-light system to provide a clear view of the system's operation in all environments. The monitor provides information about operation error, system fault, battery level, hour meter and selected performance mode. Other various functions include items

such as self diagnostics and password activation. These features are can be accessed without the need of a laptop or handset.

### Keyboard Buttons / Performance mode

Operator can select performance mode easily according to working condition.

### Console Box & Cup Holder

Additional storage spaces are located inside the operating space for operator's convenience.



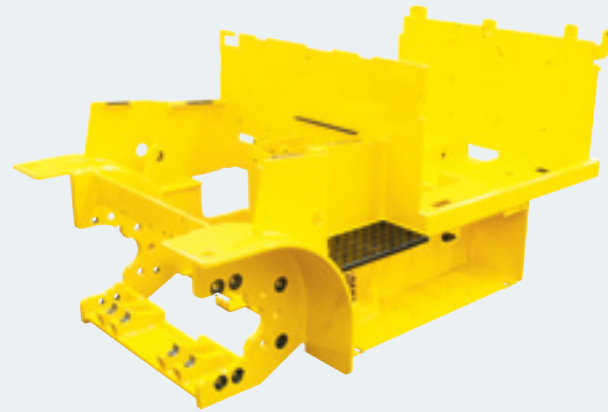


## High Durability & Simple Arrangement

An ideal arrangement of component parts ensures easy access and convenience for maintenance.

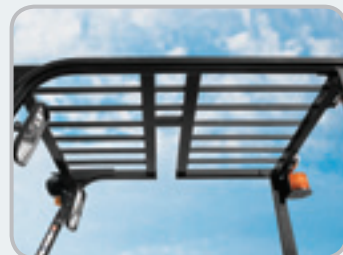


Some of the photos may include optional equipment.



### Heavy Duty Single Frame

Heavy duty single type frame, designed on the basis of accurate structural analysis, guarantees durability and safety.



### Strong Overhead Guard

The safety overhead guard exceeds EEC and ANSI regulations and protects the operator during hazardous work.



### Parking Brake

Ratchet type parking brake requires less effort from the operator to set.



### Hand Grip & Large Footboard

Wide "open" step and large hand grip offer convenience and safety when entering and exiting the truck.

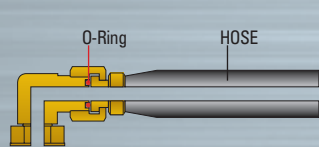


### Rear Safety Lamp

Rear combination lamps with turn signal lamps, tail lamp and brake lights are positioned for high visibility to ensure safety.



### Battery Locking System



### ORFS (O-Ring Face Seal)

ORFS type hose prevents the leaking of hydraulic oil.

### High quality AC motors

Enclosed motors prolong durability. No brush and no commutator. (No arc and no spark)



## Easy Maintenance & Serviceability

Battery change is easy with a swing-up compartment and a slotted overhead guard. Opening and closing of the battery cover is made easy with a gas-spring assisted cylinder.



### Easy battery replacement

Battery change is easy with swing-up compartment and slotted overhead guard. Opening and closing of battery cover is made easy with a gas-spring assist cylinder.



### A concentrated fuse box for easy inspection



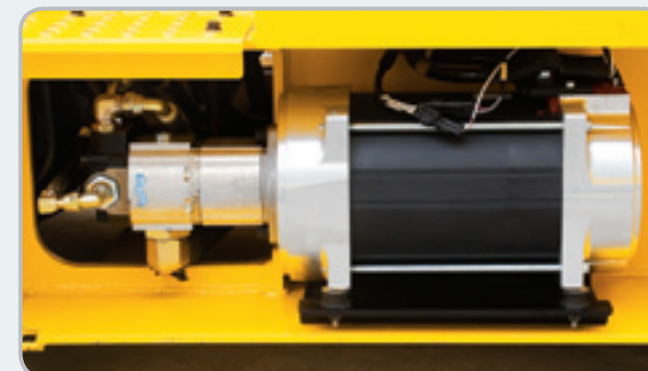
### Oil Tank Port



### Steering Sensor



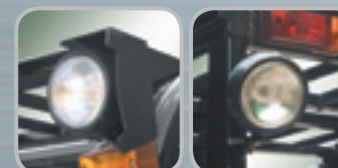
### Easy to Check Brake Oil Level



### Hydraulic motor



### Battery Disconnect Lever / Switch



### High Visibility Headlights & Rear Work Light



### DC-DC Converter

DC-DC converter exceeds UL & CE requirements to prevent short circuit, overload and reverse polarity

## Mast Specification (22/25B-7)

Mast Type	Maximum Fork Height (mm)	Overall Height (Lowered) (mm)	Free Lift (mm)		Tilt Angle (deg) Fwd / Bwd	Load Capacity without side shift at (500mm LC) (kg)		Load Capacity with side shift at (500mm LC) (kg)		Truck Weight (Unloaded) (kg)		
			With Backrest	Without Backrest		22B-7	25B-7	22B-7	25B-7	22B-7	25B-7	
			22/25B-7	22/25B-7		22/25B-7	22/25B-7	22/25B-7	22/25B-7	22/25B-7	22/25B-7	
2-Stage Limited free lift	V300	3,000	2,002	115	115	6/10	2,200	2,500	2,200	2,500	3,853	4,211
	* V330	3,300	2,152	115	115	6/10	2,200	2,500	2,150	2,500	3,872	4,230
	V350	3,500	2,252	115	115	6/10	2,160	2,500	2,110	2,500	3,889	4,247
	V370	3,700	2,402	115	115	6/10	2,120	2,500	2,070	2,450	3,911	4,269
	V400	4,000	2,552	115	115	6/10	2,080	2,460	2,030	2,410	3,933	4,291
	V430	4,300	2,702	115	115	6/6	2,030	2,400	1,980	2,350	3,982	4,340
	V450	4,500	2,852	115	115	6/6	1,990	2,360	1,940	2,310	4,012	4,370
	V470	4,700	2,952	115	115	6/6	1,960	2,330	1,910	2,280	4,026	4,384
V500	5,000	3,102	115	115	6/6	1,920	2,280	1,870	2,230	4,048	4,406	
2-Stage full free lift	VF290	2,900	2,002	822	1,379	6/6	2,200	2,500	2,200	2,450	3,913	4,271
	VF320	3,200	2,152	972	1,529	6/6	2,200	2,500	2,150	2,450	3,946	4,304
3-Stage full free lift	TF370	3,700	1,802	622	1,179	6/6	2,060	2,460	2,010	2,410	3,999	4,357
	TF400	4,000	1,902	722	1,279	6/6	2,015	2,400	1,960	2,350	4,019	4,377
	TF430	4,300	2,002	822	1,379	6/6	1,970	2,340	1,920	2,290	4,040	4,398
	TF450	4,500	2,102	922	1,479	6/6	1,940	2,310	1,890	2,260	4,061	4,419
	TF470	4,700	2,152	972	1,529	6/6	1,920	2,270	1,870	2,220	4,072	4,430
	TF500	5,000	2,252	1,072	1,629	6/6	1,880	2,230	1,830	2,180	4,097	4,455
	TF550	5,500	2,452	1,272	1,829	6/6	1,810	2,150	1,760	2,100	4,136	4,494
	TF600	6,000	2,652	1,472	2,029	6/6	1,740	2,070	1,690	2,020	4,173	4,531
TF650	6,500	2,852	1,672	2,229	3/3	950	1,180	900	1,130	4,211	4,569	
4-Stage full free lift	QF610	6,100	2,137	957	1,514	3/3	1,510	1,620	1,460	1,570	4,438	4,796
	QF660	6,600	2,337	1,157	1,714	3/3	1,410	1,520	1,360	1,470	4,498	4,856
	QF700	7,000	2,437	1,257	1,814	3/3	1,210	1,270	1,160	1,220	4,529	4,887
	QF745	7,450	2,587	1,407	1,964	3/3	1,110	1,170	1,060	1,120	4,574	4,932
QF790	7,900	2,737	1,557	2,114	3/3	670	730	620	680	4,675	5,033	

\* TS-Mast : Wide Visible 3-Stage Full Free Lift Mast with 2 Free Lift Cylinders.

\* Standard

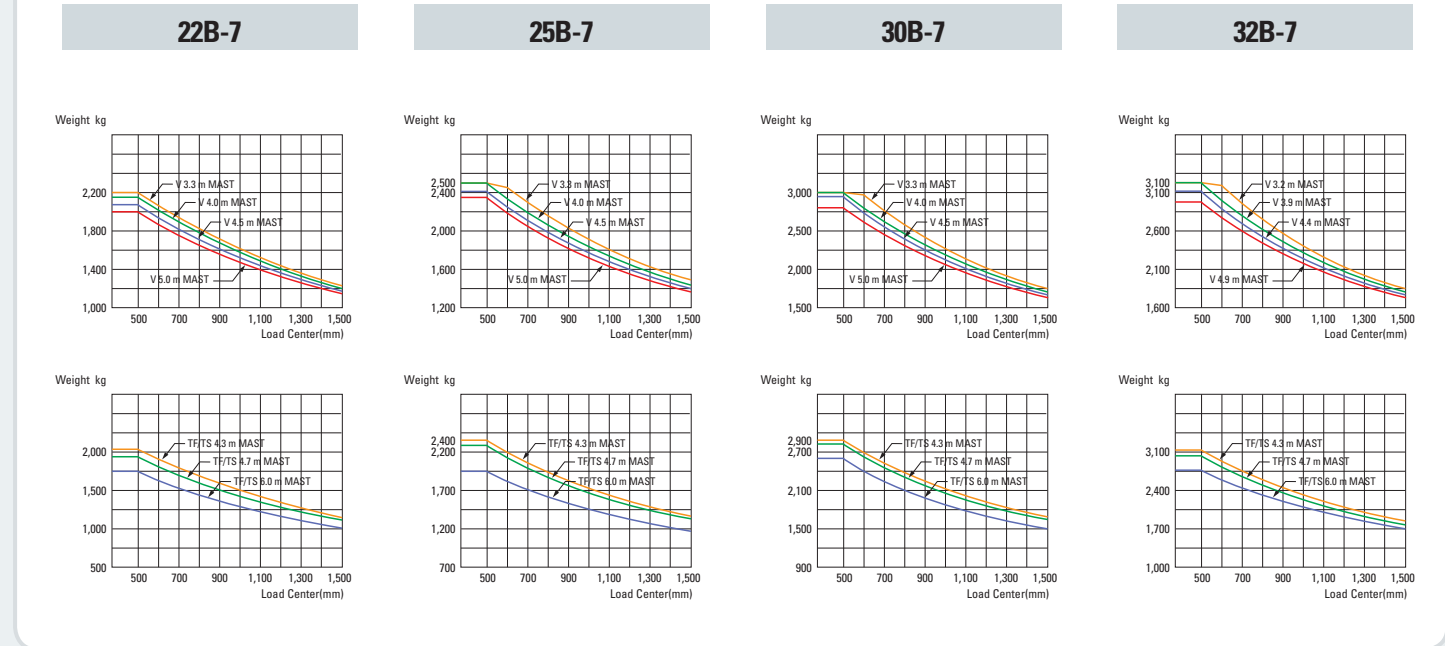
## Mast Specification (30/32B-7)

Mast Type	Maximum Fork Height (mm)	Overall Height (Lowered) (mm)	Free Lift (mm)		Tilt Angle (deg) Fwd / Bwd	Load Capacity without side shift at (500mm LC) (kg)		Load Capacity with side shift at (500mm LC) (kg)		Truck Weight (Unloaded) (kg)						
			With Backrest	Without Backrest		30B-7	32B-7	30B-7	32B-7	30B-7	32B-7					
			30B-7	32B-7		30B-7	32B-7	30B-7	32B-7	30B-7	32B-7					
2-Stage Limited free lift	V300	3,000	2,900	2,002	2,002	115	115	115	115	6/10	3,000	3,200	3,000	3,200	4,469	4,665
	* V330	3,300	3,200	2,152	2,152	115	115	115	115	6/10	3,000	3,200	3,000	3,200	4,490	4,686
	V350	3,500	3,400	2,252	2,252	115	115	115	115	6/10	3,000	3,200	2,930	3,130	4,509	4,705
	V370	3,700	3,700	2,402	2,402	115	115	115	115	6/10	2,980	3,190	2,910	3,120	4,532	4,729
	V400	4,000	4,000	2,552	2,552	115	115	115	115	6/10	2,920	3,120	2,850	3,050	4,556	4,752
	V430	4,300	4,300	2,702	2,702	115	115	115	115	6/6	2,850	3,050	2,780	2,980	4,606	4,803
	V450	4,500	4,500	2,852	2,852	115	115	115	115	6/6	2,810	3,000	2,740	2,930	4,637	4,835
	V470	4,700	4,700	2,952	2,952	115	115	115	115	6/6	2,770	2,960	2,700	2,890	4,653	4,851
V500	5,000	5,000	3,102	3,102	115	115	115	115	6/6	2,710	2,900	2,640	2,830	4,677	4,875	
2-Stage full free lift	VF290	2,900	2,900	2,002	2,052	822	872	1,307	1,357	6/6	3,000	3,200	3,000	3,200	4,504	4,699
	VF320	3,200	3,200	2,152	2,202	972	1,022	1,457	1,507	6/6	3,000	3,200	2,930	3,130	4,537	4,732
3-Stage full free lift	TF370	3,700	3,700	1,802	1,852	622	672	1,107	1,062	6/6	2,900	3,090	2,830	3,020	4,633	4,866
	TF400	4,000	4,000	1,902	1,952	722	772	1,207	1,162	6/6	2,840	3,020	2,770	2,950	4,654	4,888
	TF430	4,300	4,300	2,002	2,052	822	872	1,307	1,262	6/6	2,770	2,960	2,700	2,890	4,698	4,913
	TF450	4,500	4,500	2,102	2,152	922	972	1,407	1,362	6/6	2,740	2,910	2,670	2,840	4,703	4,937
	TF470	4,700	4,700	2,152	2,202	972	1,022	1,457	1,412	6/6	2,700	2,880	2,630	2,810	4,715	4,950
	TF500	5,000	5,000	2,252	2,302	1,072	1,122	1,557	1,512	6/6	2,640	2,820	2,570	2,750	4,740	4,976
	TF550	5,500	5,500	2,452	2,502	1,272	1,322	1,757	1,712	6/6	2,550	2,720	2,480	2,650	4,783	5,021
	TF600	6,000	6,000	2,652	2,702	1,472	1,522	1,957	1,912	6/6	2,460	2,630	2,390	2,560	4,825	5,064
TF650	6,500	6,500	2,852	2,902	1,672	1,722	2,157	2,112	3/3	1,400	1,510	1,330	1,440	4,881	5,109	
4-Stage full free lift	QF610	6,100	6,100	2,137	2,187	957	1,007	1,442	1,449	3/3	1,700	1,810	1,630	1,740	5,023	5,241
	QF660	6,600	6,600	2,337	2,387	1,157	1,207	1,642	1,649	3/3	1,600	1,710	1,530	1,640	5,083	5,301
	QF700	7,000	7,000	2,437	2,487	1,257	1,307	1,742	1,749	3/3	1,320	1,420	1,250	1,350	5,113	5,331
	QF745	7,450	7,450	2,587	2,637	1,407	1,457	1,892	1,899	3/3	1,170	890	1,100	820	5,159	5,374
QF790	7,900	7,900	2,737	2,787	1,557	1,607	2,042	2,049	3/3	690	500	620	430	5,260	5,478	

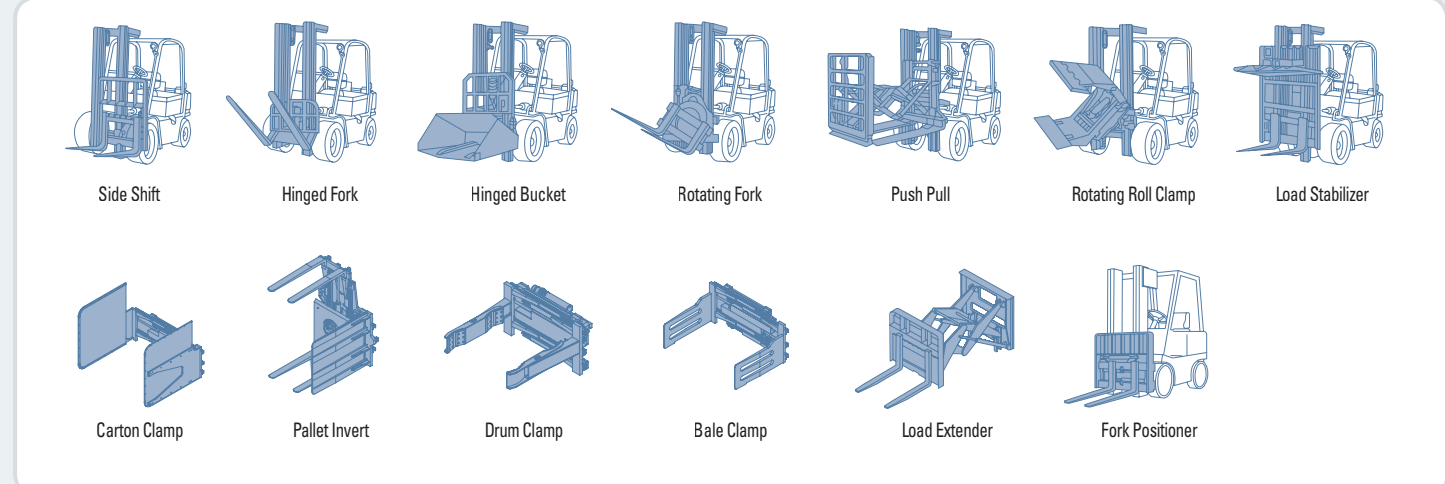
\* TS-Mast : Wide Visible 3-Stage Full Free Lift Mast with 2 Free Lift Cylinders.

\* Standard

## Load Capacity



## Various Attachments



## Optional Items

- Mast**
  - 3-Stage Full Free Lift, 2-Stage Full Free Lift
  - 3-Stage Full Free Lift, 4-Stage Full Free Lift
- Fork(mm)**
  - 22/25B-7**  
900 / 1,000 / 1,050(std) / 1,200 / 1,350 / 1,500 / 1,650 / 1,800
  - 30/32B-7**  
900 / 1,050(std) / 1,150 / 1,200 / 1,350 / 1,500 / 1,650 / 1,800 / 2,120
- Overhoe(mm)**  
1,100/1,700/1,800
- UL EE**
- Sideshift**
- Integral Sideshift**
- Tire**  
Pneumatic  
Non-marking
- Cold Storage**
- Dual Voltage(36/48V)**
- Finger Tip Control**
- SBR(Side Battery Removing)**