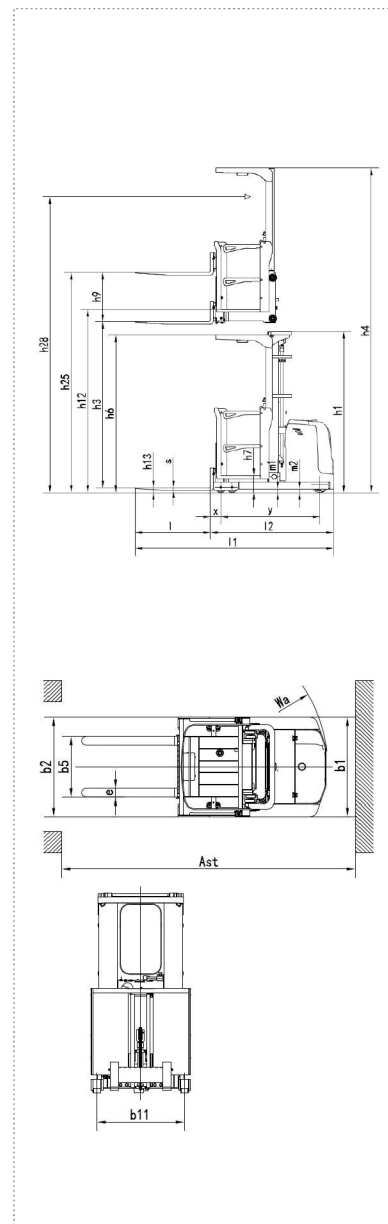


Characters				
1.1	Manufacturer	MHA1030	MHA1060S	
1.2	Model	Battery	Battery	
1.3	Power Type	Stand on	Stand on	
1.4	Operation Type	1000	1000	Q(kg)
1.5	Load Center C(mm)	500	500	C(mm)
1.6	Front Overhang	148	160	x(mm)
1.7	Wheelbase y(mm)	1410	1410	y(mm)
Weight				
2.1	Service Weight(incl.battery)	2490	2830	kg
2.2	Weight distribution when loaded, drive side/load side	940/2550	1130/2700	kg
2.3	Weight distribution when unloaded, drive side/load side	1410/1080	1610/1220	kg
Wheel				
3.1	Wheel Types	PU	PU	
3.2	Load Wheel	φ 150×90	φ 150×90	mm
3.3	Drive wheel	φ 254×100	φ 254×100	mm
3.4	Number of wheels,front/rear(x=drive wheel)	4/1X	4/1X	
3.5	Wheel tread,load side	1008	1008	b11(mm)
Size				
4.1	Mast closed height	2300	2815	h1(mm)
4.2	Lift height	2760	5760	h3(mm)
4.3	Max lift height of fork	3530	6530	h25(mm)
4.4	Mast extended height	5010	7955	h4(mm)
4.5	Overhead guard height	2270	2270	h6(mm)
4.6	Platform min.ground clearance	260	260	h7(mm)
4.7	Auxiliary lift height	700	700	h9(mm)
4.8	Platform max.ground clearance	3000	6000	h12(mm)
4.9	Picking height (h12+1600mm)	4600	7600	h28(mm)
4.10	Fork face min.ground clearance	70	70	h13(mm)
4.11	Overall length	2825	2835	l1(mm)
4.12	Length to fork face	1755	1765	l2(mm)
4.13	Overall width	1150	1150	b1/b2(mm)
4.14	Fork size	1070/100/40	1070/100/40	v/e/s(mm)
4.15	Fork outside width	700	700	b5(mm)
4.16	Guide wheel width	1336	1336	b6(mm)
4.17	Mast ground clearance	50	50	m1(mm)
4.18	Body ground clearance	50	50	m2(mm)
4.19	"Aisle width for pallet 1000*1200 1200 Cross fork direction"	3120	3130	Ast(mm)
4.20	"Aisle width for pallet 800*1200 1200 Extended fork direction"	3230	3245	Ast(mm)
4.21	Turning radius	1625	1625	Wa(mm)
Function				
5.1	Driving speed(load/unload)	6/6.3	6/6.3	km/h
5.2	Lifting speed(load/unload)	115/140	115/140	mm/s
5.3	Lowering speed(load/unload)	135/140	135/140	mm/s
5.4	Brake type	Electromagnetic type	Electromagnetic type	
Drive				
6.1	Driving motor(S2-60min)	2.5	2.5	kw
6.2	Lifting motor(S3-15%)	3	3	kw
6.3	Battery voltage/capacity	24/400	24/400	V/Ah
6.4	Battery weight	350	350	kg
Others				
7.1	Driving motor type	AC	AC	
7.2	Driver ear noise (EN12053 Standard)	70	70	dB(A)
7.3	Steering system	Electric Power Steering	Electric Power Steering	

Three-view drawing



Mast Specification

Duplex Mast					
Model	MHA	10-30	10-35	10-40	10-45
Lift height	h3	2760	3260	3760	4260
Total lift height	h24(h3+h9)	3460	3960	4460	4960
Fork lift height	h25(h3+h9+h13)	3530	4030	4530	5030
Auxiliary lift height	h9	700	700	700	700
Platform lift height	h12(h3+h7)	3000	3500	4000	4500
Picking height	h28(h12+1600)	4600	5100	5600	6100
Mast closed height	h1	2300	2550	2850	3100
Max mast extended height	h4	5010	5510	6060	6610

Triplex Mast						
Model	MHA	10-40S	10-45S	10-50S	10-55S	10-60S
Lift height	h3	3760	4260	4760	5260	5760
Total lift height	h24(h3+h9)	4460	4960	5460	5960	6460
Fork lift height	h25(h3+h9+h13)	4530	5030	5530	6030	6530
Auxiliary lift height	h9	700	700	700	700	700
Platform lift height	h12(h3+h7)	4000	4500	5000	5500	6000
Picking height	h28(h12+1600)	5600	6100	6600	7100	7600
Mast closed height	h1	2149	2316	2482	2649	2815
Max mast extended height	h4	5955	6455	6955	7455	7955

Capacity chart

