

Features		
1.1	Manufacturer	MIMA
1.2	Model	MQZ25SQ
1.3	Power type	Battery
1.4	Operation type	Seated
1.5	Load capacity	Q(kg)
1.6	Load center	C(mm)
1.7	The center of front load wheel to backrest	x(mm)
1.8	Front overhang	x1(mm)
1.9	Wheelbase	y(mm)

2.1	Service weight(incl.battery)	kg	5150
-----	------------------------------	----	------

Wheel			
3.1	Tyre type,front/rear	PU	
3.2	Tyre size,load side	mm	φ343×130
3.3	Tyre size,drive side	mm	φ400×160
3.4	Wheel quantity(front/rear,X=drive)		2/1X
3.5	Wheel tread,load side	b11(mm)	1550

Dimension			
4.1	Fork tilting,front/back	α/β(°)	1/5
4.2	Closed mast height	h1(mm)	3829
4.3	Free lifting height	h2(mm)	2866
4.4	Lifting height	h3(mm)	8500
4.5	Max.mast lifting height(incl.backrest)	h4(mm)	9464
4.6	Mast overhead guard height	h6(mm)	2245
4.7	Seat height	h7(mm)	1186
4.8	Class 1 pedal height	h8(mm)	390
4.9	Left and right leg height	h10(mm)	456
4.10	Overall length	l1(mm)	2384
4.11	Fork surface retraction length	l2(mm)	1464
4.12	Overall width	b1/b2(mm)	1790/1270
4.13	Fork size	l/e/s(mm)	920×100×45
4.14	Backrest width	b3(mm)	2300
4.15	Outside width of forks	b5(mm)	400-2240
4.16	Inner width of legs	b4(mm)	977
4.17	Reach stroke	l4(mm)	740
4.18	Ground clearance of mast	m1(mm)	75
4.19	Aisle width.when moving sideways(for 1000x1000 pallet)	Ast(mm)	2665
4.20	Turning radius	Wa(mm)	1987

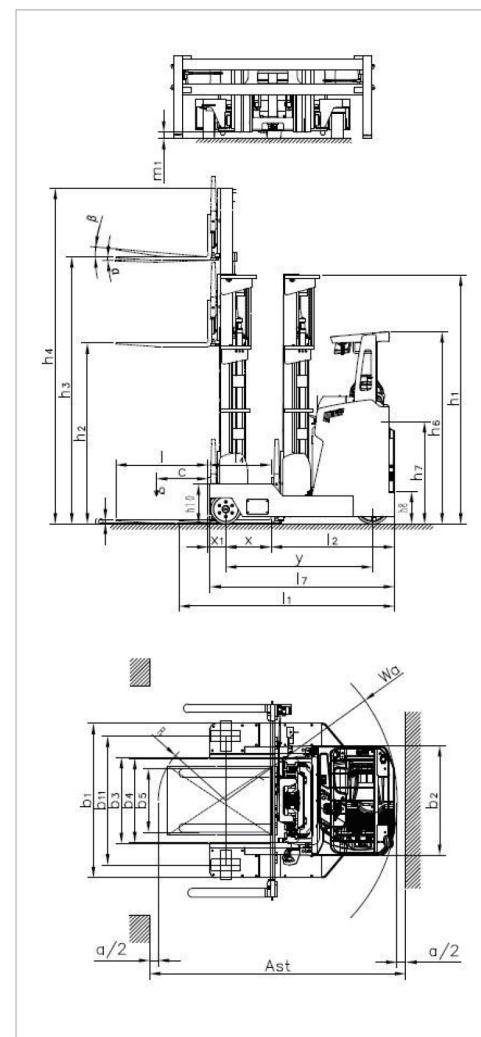
Performance			
5.1	Driving speed,load/unload	km/h	8.5/10
5.2	Lifting speed, load/unload	mm/s	260/330
5.3	Lowering speed, load/unload	mm/s	300/250
5.4	Max. Gradeability, load/unload(S2-5min)	%(tanθ )	10
5.4	Blake type		Electromagnetic

Power			
6.1	Drive motor power(S2-60min)	kw	8
6.2	Lifting motor power(S3 5%)	kw	15
6.3	Battery, voltage/volume	V/Ah	48/560
6.4	Battery weight	kg	921

Others			
7.1	Drive controlling method		AC

Mast specification										
Full Free Triplex Mast										
Model	MQZ	25SQ-45	25SQ-50	25SQ-55	25SQ-60	25SQ-65	25SQ-70	25SQ-72	25SQ-75	25SQ-80
Lifting height	h3(mm)	4500	5000	5500	6000	6500	7000	7200	7500	8000
Max.lifting height(incl.backrest)	h4(mm)	5464	5964	6464	6964	7464	7964	8164	8464	8964
Closed mast height	h1(mm)	2395	2562	2728	2895	3062	3228	3295	3395	3662
Free lifting height	h2(mm)	1434	1600	1768	1934	2100	2268	2334	2434	2700
Full Free Triplex Mast										
Model	MQ	25SQ-85								
Lifting height	h3(mm)	8500								
Max.lifting height(incl.backrest)	h4(mm)	9464								
Closed mast height	h1(mm)	3829								
Free lifting height	h2(mm)	2866								

## Product 2D view



## Load Chart

