

L02 U-model

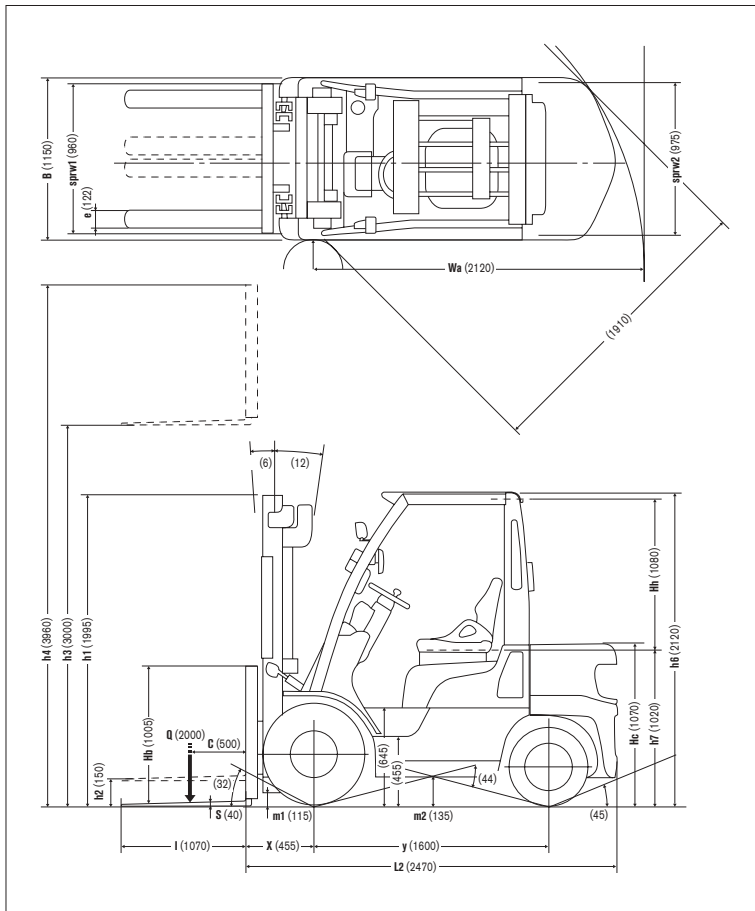
LX SERIES

2.0

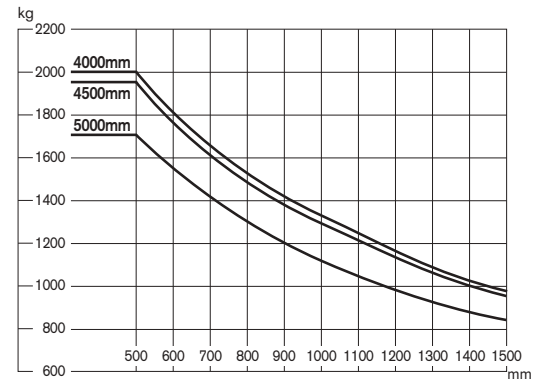
3.5 ton
at 500mm
Load Center

L02-U

Dimensions



Load Capacity Chart



No capacity reduction until 4000 mm height. Load capacities are computed with following conditions, a) Standard 2W Mast and b) Mast in vertical position.

Tire and Tread Specifications

Front Tire	Single	Double
Front Tire Size	7.00-12-12PR()	7.00-12-12PR()
Overall Width mm	1150	1640
Front Tread mm	960	1205

Ground Clearance

Under mast	mm	115
Under power unit	mm	135
Under frame	mm	155

Mast Specifications & Rated Capacities

PL02A20JU, PL02A20DU, PL02A20U, PL02A20WU, UL02A20JU, UL02A20DU, UL02A20U, UL02M20U, UL02A20WU, UL02M20WU, YL02A20U, YL02M20U

Mast type	Mast name	Max. fork Height mm	Overall height			Free lift		Front overhang mm	Tilt angle Forward/ Backward deg	Capacity Single tire Load center 500 mm kg
			Fully lowered mm	Fully extended		Without backrest mm	With STD backrest mm			
				Without backrest mm	With STD backrest mm					
Two stage (Wide view 2W)	2W 300	3000	1995	3635	4045	150	150	455	6/12	2000
	2W 330	3300	2145	3935	4345				6/12	2000
	2W 350	3500	2280	4135	4545				6/12	2000
	2W 370	3700	2405	4335	4745				6/12	2000
	2W 400	4000	2595	4635	5045				6/12	2000
	2W 450	4500	2845	5135	5545				6/ 6	1950
	2W 500	5000	3095	5635	6045				6/ 6	1700
Two stage (Full free 2F)	2F 300	3000	1995	3670	4045	1365	990	455	6/12	2000
	2F 330	3300	2145	3970	4345	1515	1140		6/12	2000
	2F 350	3500	2280	4170	4545	1650	1275		6/12	2000
	2F 370	3700	2405	4370	4745	1775	1400		6/12	2000
	2F 400	4000	2595	4670	5045	1965	1590		6/12	2000
	2F 420	4200	2695	4870	5245	2065	1690		6/6	1950(P/UL02) 2000(YL02)
	2F 450	4500	2845	5135	5545	2215	1840		6/6	1900
Three stage (Full free 3F)	3F 385	3850	1845	4520	4895	1215	840	470	6/ 6	2000
	3F 430	4300	1995	4970	5345	1365	990		6/ 6	1900
	3F 475	4750	2145	5420	5795	1515	1140		6/ 6	1800
	3F 515	5150	2280	5820	6195	1650	1275		6/ 6	1550
	3F 550	5500	2405	6170	6545	1775	1400		6/ 6	1450
	3F 600	6000	2595	6670	7045	1965	1590		6/ 6	900
	*3F 650	6500	2845	7170	7545	2215	1840		6/ 6	*-
	*3F 700	7000	3095	7670	8045	2465	2090		6/ 6	*-

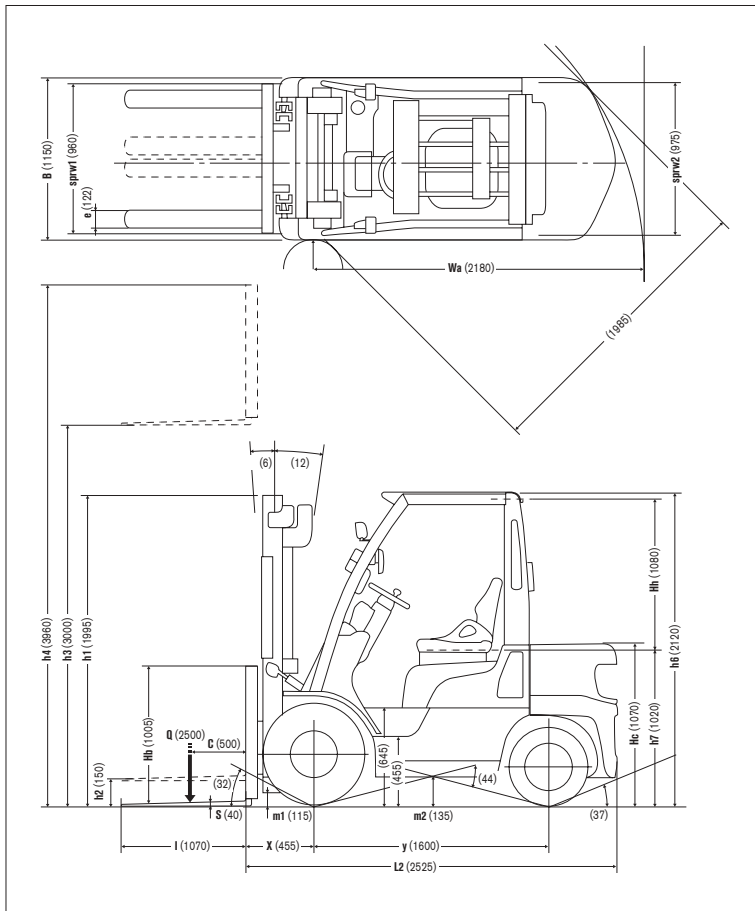
* Double tire only. Capacity....3F650:1550kg, 3F700:1200kg

Main Truck Specifications

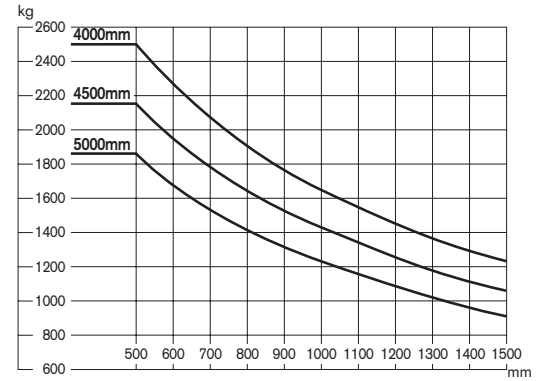
Item				PL02A20JU/DU	PL02A20U/WU	UL02A20JU/DU	UL02A20U/WU (UL02M20U/WU)	YL02A20U (YL02M20U)			
SPECIFICATIONS	1	Manufacturer		NISSAN	NISSAN	NISSAN	NISSAN	NISSAN	1		
	2	Model		PL02A20JU/DU	PL02A20U/WU	UL02A20JU/DU	UL02A20U/WU (UL02M20U/WU)	YL02A20U (YL02M20U)	2		
	3	Load capacity	Q load lifted	kg	2000	2000	2000	2000	2000	3	
	4	Load center	C distance	mm	500	500	500	500	500	4	
	5	Power unit	battery, diesel, gasoline, LP gas		Gasoline/Gasoline·LPG	Gasoline/Gasoline·LPG	Gasoline/Gasoline·LPG	Gasoline/Gasoline·LPG	Diesel	5	
	6	Operator type	walkie, rider / stand, rider / seat		Rider / seat	Rider / seat	Rider / seat	Rider / seat	Rider / seat	6	
	7	Tire type	front / rear		PNE / PNE	PNE / PNE	PNE / PNE	PNE / PNE	PNE / PNE	7	
	8	Wheels(x=driven)	number front / rear		2X / 2	2X / 2	2X / 2	2X / 2	2X / 2	8	
DIMENSIONS	9	Maximum fork height	h3 standard lift height	mm	3000	3000	3000	3000	3000	9	
	10	Free lift	h2 standard free lift	mm	150	150	150	150	150	10	
	13	Fork size	s.e.l	mm	40 x 122 x 1070	40 x 122 x 1070	40 x 122 x 1070	40 x 122 x 1070	40 x 122 x 1070	13	
		Max. Fork Spread		mm	1000	1000	1000	1000	1000		
		Min. Fork Spread		mm	250	250	250	250	250		
	14	Tilt range	/ mast forward / backward	deg	6 / 12	6 / 12	6 / 12	6 / 12	6 / 12	14	
	15	Overall measurement	L2 length to fork face	mm	2470	2470	2470	2470	2470	15	
	16		B overall width	mm	1150	1150	1150	1150	1150	16	
	17		h1 height mast retracted	mm	1995	1995	1995	1995	1995	17	
	18		h4 height mast extended	mm	3960	3960	3960	3960	3960	18	
	19		h6 height overhead guard	mm	2120	2120	2120	2120	2120	19	
	20		h7 height of driver's seat	mm	1020	1020	1020	1020	1020	20	
	21		Turning radius (outside)	Wa	mm	2120	2120	2120	2120	2120	21
22	Load distance	X from center of front axle	mm	455	455	455	455	455	22		
23	Right angle stacking aisle	Ast pallets (LxW) 1200x800/1000x1200	mm	3975/3775	3975/3775	3975/3775	3975/3775	3975/3775	23		
PERFORMANCE	24	Speeds	travelling	full load	km/h	19.5	19.5	19.5	19.5	19.5	24
	no load			km/h	19.5	19.5	19.5	19.5	19.5	19.5	
	lifting		full load	mm/s	600	550	660	600	650	650	25
			no load	mm/s	650	640	700	680	700	700	
	lowering		full load	mm/s	500	500	500	500	500	500	26
			no load	mm/s	500	500	500	500	500	500	
28	Max. drawbar pull	full load / no load 5min.	N	17050 / 15300	15200 / 15300	18400 / 15300	17250 / 15300 (17950 / 15300)	20000 / 16050 (19000 / 16050)	28		
29	Gradeability at 2km/h	full load / no load	tan %	31 / -	28 / -	39 / -	34 / -	36 / -	29		
30	Max. gradeability	full load / no load	tan %	37 / 28	33 / 28	45 / 28	39 / 28	41 / 28	30		
WEIGHTS	32	Truck weight	no load	kg	3310	3310	3310	3310	3460	32	
	33	Weight distribution	full load	front / rear	kg	4715 / 595	4715 / 595	4715 / 595	4715 / 595	4785 / 675	33
	34		no load	front / rear	kg	1525 / 1785	1525 / 1785	1525 / 1785	1525 / 1785	1590 / 1870	34
CHASSIS & WHEELS	35	Tires	number	front / rear	each	2 / 2	2 / 2	2 / 2	2 / 2	35	
	36		size-front			7.00-12-12PR()	7.00-12-12PR()	7.00-12-12PR()	7.00-12-12PR()	7.00-12-12PR()	36
	37		size-rear			6.00-9-10PR()	6.00-9-10PR()	6.00-9-10PR()	6.00-9-10PR()	6.00-9-10PR()	37
	38	Wheelbase	y	mm	1600	1600	1600	1600	1600	38	
	39	Tread	sprw 1 / sprw 2 front / rear	mm	960 / 975	960 / 975	960 / 975	960 / 975	960 / 975	39	
		Backrest height	Hb top of backrest ~ upper of fork face	mm	1005	1005	1005	1005	1005		
		Overhead guard clearance	Hh	mm	1080	1080	1080	1080	1080		
		Counterweight height	Hc	mm	1070	1070	1070	1070	1070		
	40	Ground clearance	m1 full load minimum	mm	115	115	115	115	115	40	
	41		m2 full load center of wheelbase	mm	135	135	135	135	135	41	
	42	Service brake	mechanical / hydraulic / electric / pneu		Hydraulic	Hydraulic	Hydraulic	Hydraulic	Hydraulic	42	
43	Parking brake	foot / hand / seat switch		Hand	Hand	Hand	Hand	Hand	43		
DRIVE LINE	45	Battery	voltage / capacity (5 hour)	V/AH	12 / 27	12 / 27	12 / 27	12 / 27	12 / 64	45	
	49	Internal Combustion engine	manufacturer / type		NISSAN / K21	NISSAN / K21	NISSAN / K25	NISSAN / K25	MHI / 3.3L-4C	49	
	50		maximum engine rated power	kW/rpm	42 / 2700	34 / 2200	47 / 2700	40 / 2200	44 / 2300	50	
	51		maximum engine rated torque	Nm/rpm	160 / 2000	158 / 1600	192 / 1600	186 / 1600	183 / 1800	51	
52	number of cylinders / displacement		/ cc	4 / 2065	4 / 2065	4 / 2488	4 / 2488	4 / 3331	52		
55	Transmission	type		Automatic	Automatic	Automatic	Automatic (Manual)	Automatic (Manual)	55		
		speed			1 / 1	1 / 1	1 / 1 (2 / 2)	1 / 1 (2 / 2)			
57	Operating pressure	for attachment	MPa	12.7	12.7	12.7	12.7	12.7	57		

L02-U

Dimensions



Load Capacity Chart



No capacity reduction until 4000 mm height. Load capacities are computed with following conditions, a) Standard 2W Mast and b) Mast in vertical position.

Tire and Tread Specifications

Front Tire	Single	Double
Front Tire Size	7.00-12-12PR()	7.00-12-12PR()
Overall Width mm	1150	1640
Front Tread mm	960	1205

Ground Clearance

Under mast	mm	115
Under power unit	mm	135
Under frame	mm	155

Mast Specifications & Rated Capacities

PL02A25JU, PL02A25DU, PL02A25U, PL02A25WU, UL02A25JU, UL02M25JU, UL02A25DU, UL02M25DU, UL02A25U, UL02M25U, UL02A25WU, UL02M25WU, YL02A25U, YL02M25U

Mast type	Mast name	Max. fork Height mm	Overall height			Free lift		Front overhang mm	Tilt angle deg	Capacity Single tire Load center 500 mm kg
			Fully lowered mm	Fully extended		Without backrest mm	With STD backrest mm			
				Without backrest mm	With STD backrest mm					
Two stage (Wide view 2W)	2W 300	3000	1995	3635	4045	150	150	455	6/12	2500
	2W 330	3300	2145	3935	4345				6/12	2500
	2W 350	3500	2280	4135	4545				6/12	2500
	2W 370	3700	2405	4335	4745				6/12	2500
	2W 400	4000	2595	4635	5045				6/12	2500
	2W 450	4500	2845	5135	5545				6/ 6	2150
	2W 500	5000	3095	5635	6045				6/ 6	1850
Two stage (Full free 2F)	2F 300	3000	1995	3670	4045	1365	990	455	6/12	2500
	2F 330	3300	2145	3970	4345	1515	1140		6/12	2500
	2F 350	3500	2280	4170	4545	1650	1275		6/12	2500
	2F 370	3700	2405	4370	4745	1775	1400		6/12	2500
	2F 400	4000	2595	4670	5045	1965	1590		6/12	2500
	2F 420	4200	2695	4870	5245	2065	1690		6/6	2450(P/UL02) 2500(YL02)
	2F 450	4500	2845	5135	5545	2215	1840		6/6	2150
Three stage (Full free 3F)	3F 385	3850	1845	4520	4895	1215	840	470	6/ 6	2500
	3F 430	4300	1995	4970	5345	1365	990		6/ 6	2300
	3F 475	4750	2145	5420	5795	1515	1140		6/ 6	2000
	3F 515	5150	2280	5820	6195	1650	1275		6/ 6	1750
	3F 550	5500	2405	6170	6545	1775	1400		6/ 6	1600
	3F 600	6000	2595	6670	7045	1965	1590		6/ 6	1000
	*3F 650	6500	2845	7170	7545	2215	1840		6/ 6	*-
	*3F 700	7000	3095	7670	8045	2465	2090		6/ 6	*-

* Double tire only. Capacity....3F650:1650kg, 3F700:1300kg

Main Truck Specifications

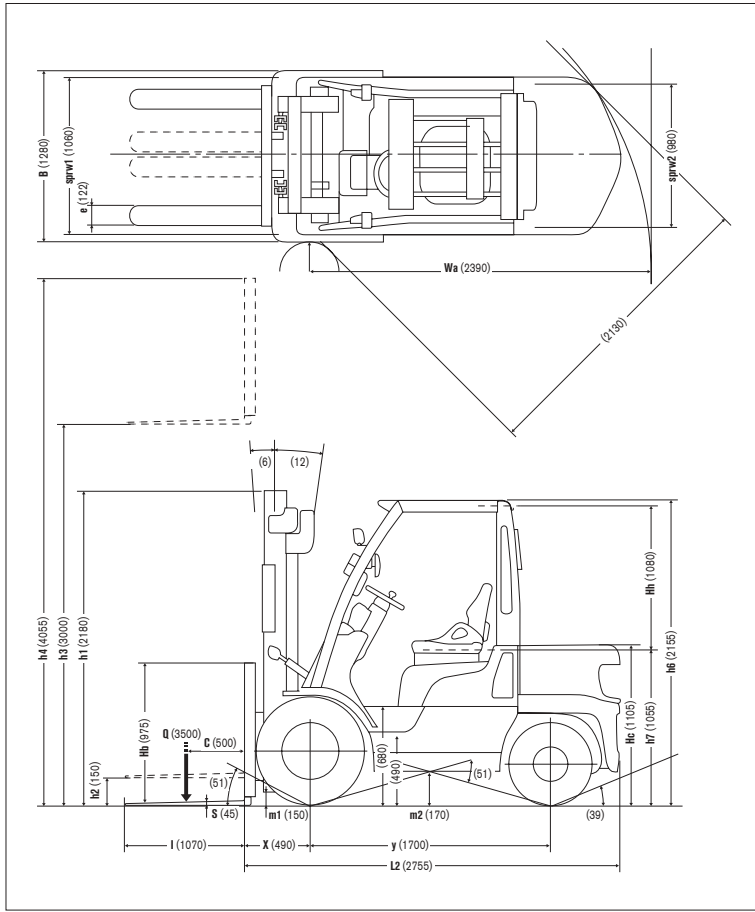
Item				PL02A25JU/DU	PL02A25U/WU	UL02A25JU/DU (UL02M25JU/DU)	UL02A25U/WU (UL02M25U/WU)	YL02A25U (YL02M25U)			
SPECIFICATIONS	1	Manufacturer		NISSAN	NISSAN	NISSAN	NISSAN	NISSAN	1		
	2	Model		PL02A25JU/DU	PL02A25U/WU	UL02A25JU/DU (UL02M25JU/DU)	UL02A25U/WU (UL02M25U/WU)	YL02A25U (YL02M25U)	2		
	3	Load capacity	Q load lifted	kg	2500	2500	2500	2500	2500	3	
	4	Load center	C distance	mm	500	500	500	500	500	4	
	5	Power unit	battery, diesel, gasoline, LP gas		Gasoline/Gasoline·LPG	Gasoline/Gasoline·LPG	Gasoline/Gasoline·LPG	Gasoline/Gasoline·LPG	Diesel	5	
	6	Operator type	walkie, rider / stand, rider / seat		Rider / seat	Rider / seat	Rider / seat	Rider / seat	Rider / seat	6	
	7	Tire type	front / rear		PNE / PNE	PNE / PNE	PNE / PNE	PNE / PNE	PNE / PNE	7	
	8	Wheels(x=driven)	number front / rear		2X / 2	2X / 2	2X / 2	2X / 2	2X / 2	8	
DIMENSIONS	9	Maximum fork height	h3 standard lift height	mm	3000	3000	3000	3000	3000	9	
	10	Free lift	h2 standard free lift	mm	150	150	150	150	150	10	
	13	Fork size	s.e.l	mm	40 x 122 x 1070	40 x 122 x 1070	40 x 122 x 1070	40 x 122 x 1070	40 x 122 x 1070	13	
		Max. Fork Spread		mm	1000	1000	1000	1000	1000		
		Min. Fork Spread		mm	250	250	250	250	250		
	14	Tilt range	/ mast forward / backward	deg	6 / 12	6 / 12	6 / 12	6 / 12	6 / 12	14	
	15	Overall measurement	L2 length to fork face	mm	2525	2525	2525	2525	2525	15	
	16		B overall width	mm	1150	1150	1150	1150	1150	16	
	17		h1 height mast retracted	mm	1995	1995	1995	1995	1995	17	
	18		h4 height mast extended	mm	3960	3960	3960	3960	3960	18	
	19		h6 height overhead guard	mm	2120	2120	2120	2120	2120	19	
	20		h7 height of driver's seat	mm	1020	1020	1020	1020	1020	20	
	21		Turning radius (outside)	Wa	mm	2180	2180	2180	2180	2180	21
	22	Load distance	X from center of front axle	mm	455	455	455	455	455	22	
	23	Right angle stacking aisle	Ast pallets (LxW) 1200x800/1000x1200	mm	4035/3835	4035/3835	4035/3835	4035/3835	4035/3835	23	
PERFORMANCE	24	Speeds	travelling	full load	km/h	19.5	19.5	19.5	19.5	19.5	24
	no load			km/h	19.5	19.5	19.5	19.5	19.5	19.5	
	lifting		full load	mm/s	600	550	660	600	650	650	25
			no load	mm/s	650	640	700	680	700	700	
	lowering		full load	mm/s	500	500	500	500	500	500	26
			no load	mm/s	500	500	500	500	500	500	
28	Max. drawbar pull	full load / no load 5min.	N	17050 / 15300	15200 / 15300	18400 / 15300 (17950 / 15300)	17250 / 15300 (16750 / 15300)	20000 / 17150 (19000 / 17150)	28		
29	Gradeability at 2km/h	full load / no load	tan %	27 / -	24 / -	33 / -	29 / -	31 / -	29		
30	Max. gradeability	full load / no load	tan %	33 / 24	28 / 24	38 / 24	31 / 24	35 / 24	30		
WEIGHTS	32	Truck weight	no load	kg	3650	3650	3650	3650	3800	32	
	33	Weight distribution	full load	front / rear	kg	5455 / 705	5455 / 705	5455 / 705	5455 / 705	5570 / 790	33
	34		no load	front / rear	kg	1455 / 2195	1455 / 2195	1455 / 2195	1455 / 2195	1520 / 2280	34
CHASSIS & WHEELS	35	Tires	number	front / rear	each	2 / 2	2 / 2	2 / 2	2 / 2	2 / 2	35
	36		size-front			7.00-12-12PR()	7.00-12-12PR()	7.00-12-12PR()	7.00-12-12PR()	7.00-12-12PR()	36
	37		size-rear			6.00-9-10PR()	6.00-9-10PR()	6.00-9-10PR()	6.00-9-10PR()	6.00-9-10PR()	37
	38	Wheelbase	y	mm	1600	1600	1600	1600	1600	38	
	39	Tread	sprw 1 / sprw 2 front / rear	mm	960 / 975	960 / 975	960 / 975	960 / 975	960 / 975	39	
		Backrest height	Hb top of backrest ~ upper of fork face	mm	1005	1005	1005	1005	1005		
		Overhead guard clearance	Hh	mm	1080	1080	1080	1080	1080		
		Counterweight height	Hc	mm	1070	1070	1070	1070	1070		
	40	Ground clearance	m1 full load minimum	mm	115	115	115	115	115	40	
	41		m2 full load center of wheelbase	mm	135	135	135	135	135	41	
	42	Service brake	mechanical / hydraulic / electric / pneu		Hydraulic	Hydraulic	Hydraulic	Hydraulic	Hydraulic	42	
43	Parking brake	foot / hand / seat switch		Hand	Hand	Hand	Hand	Hand	43		
DRIVE LINE	45	Battery	voltage / capacity (5 hour)	V/AH	12 / 27	12 / 27	12 / 27	12 / 27	12 / 64	45	
	49	Internal Combustion engine	manufacturer / type		NISSAN / K21	NISSAN / K21	NISSAN / K25	NISSAN / K25	MHI / 3.3L-4C	49	
	50		maximum engine rated power	kW/rpm	42 / 2700	34 / 2200	47 / 2700	40 / 2200	44 / 2300	50	
	51		maximum engine rated torque	Nm/rpm	160 / 2000	158 / 1600	192 / 1600	186 / 1600	183 / 1800	51	
52	number of cylinders / displacement		/ cc	4 / 2065	4 / 2065	4 / 2488	4 / 2488	4 / 3331	52		
55	Transmission	type		Automatic	Automatic	Automatic (Manual)	Automatic (Manual)	Automatic (Manual)	55		
		speed			1 / 1	1 / 1 (2 / 2)	1 / 1 (2 / 2)	1 / 1 (2 / 2)			
57	Operating pressure	for attachment	MPa	12.7	12.7	12.7	12.7	12.7	57		

Main Truck Specifications

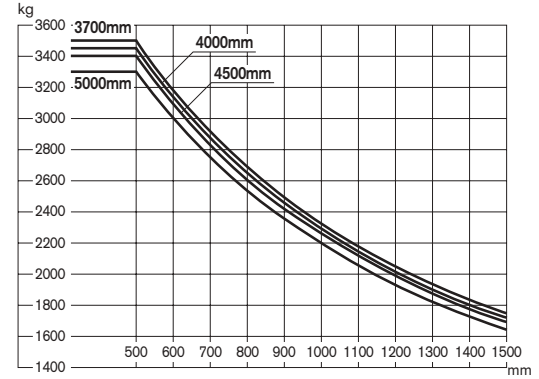
Item				UGL02A30JU/DU	UGL02A30U/WU	YGL02A30U (YGL02M30U)			
SPECIFICATIONS	1	Manufacturer		NISSAN	NISSAN	NISSAN	1		
	2	Model		UGL02A30JU/DU	UGL02A30U/WU	YGL02A30U (YGL02M30U)	2		
	3	Load capacity	Q load lifted	kg	3000	3000	3000	3	
	4	Load center	C distance	mm	500	500	500	4	
	5	Power unit	battery, diesel, gasoline, LP gas		Gasoline / Gasoline • LPG	Gasoline / Gasoline • LPG	Diesel	5	
	6	Operator type	walkie, rider / stand, rider / seat		Rider / seat	Rider / seat	Rider / seat	6	
	7	Tire type	front / rear		PNE / PNE	PNE / PNE	PNE / PNE	7	
	8	Wheels(x=driven)	number front / rear		2X / 2	2X / 2	2X / 2	8	
DIMENSIONS	9	Maximum fork height	h3 standard lift height	mm	3000	3000	3000	9	
	10	Free lift	h2 standard free lift	mm	155	155	155	10	
	13	Fork size	s.e.l	mm	45 x 122 x 1070	45 x 122 x 1070	45 x 122 x 1070	13	
		Max. Fork Spread		mm	1000	1000	1000		
		Min. Fork Spread		mm	250	250	250		
	14	Tilt range	/ mast forward / backward	deg	6 / 12	6 / 12	6 / 12	14	
	15	Overall measurement	L2 length to fork face	mm	2685	2685	2685	15	
	16		B overall width	mm	1250	1250	1250	16	
	17		h1 height mast retracted	mm	2025	2025	2025	17	
	18		h4 height mast extended	mm	4140	4140	4140	18	
	19		h6 height overhead guard	mm	2150	2150	2150	19	
	20		h7 height of driver's seat	mm	1050	1050	1050	20	
	21		Turning radius (outside)	Wa	mm	2300	2300	2300	21
	22	Load distance	X from center of front axle	mm	485	485	485	22	
	23	Right angle stacking aisle	Ast pallets (LxW) 1200x800/1000x1200	mm	4185/3985	4185/3985	4185/3985	23	
PERFORMANCE	24	travelling	full load	km/h	19.5	19.5	19.0	24	
			no load	km/h	19.5	19.5	19.0		
		lifting	full load	mm/s	530	500	540	25	
			no load	mm/s	580	560	580		
		lowering	full load	mm/s	500	500	500	26	
			no load	mm/s	500	500	500		
28	Max. drawbar pull	full load / no load 5min.	N	18250 / 18500	17000 / 18500	19000 / 17150 (18700 / 17150)	28		
29	Gradeability at 2km/h	full load / no load	tan %	28 / -	24 / -	26 / -	29		
30	Max. gradeability	full load / no load	tan %	31 / 24	27 / 24	28 / 25	30		
WEIGHTS	32	Truck weight	no load	kg	4225	4225	4285	32	
	33	Weight distribution	full load	front / rear	kg	6415 / 810	6415 / 810	6405 / 880	33
			no load	front / rear	kg	1675 / 2550	1675 / 2550	1665 / 2620	34
	34								
CHASSIS & WHEELS	35	Tires	number front / rear	each	2 / 2	2 / 2	2 / 2	35	
	36		size-front		28X9-15-12PR ()	28X9-15-12PR ()	28X9-15-12PR ()	36	
	37		size-rear		6.50-10-10PR ()	6.50-10-10PR ()	6.50-10-10PR ()	37	
	38	Wheelbase	y	mm	1700	1700	1700	38	
	39	Tread	sprw 1 / sprw 2 front / rear	mm	1030 / 980	1030 / 980	1030 / 980	39	
		Backrest height	Hb top of backrest ~ upper of fork face	mm	1095	1095	1095		
		Overhead guard clearance	Hh	mm	1080	1080	1080		
		Counterweight height	Hc	mm	1100	1100	1100		
	40	Ground clearance	m1 full load minimum	mm	145	145	145	40	
	41		m2 full load center of wheelbase	mm	165	165	165	41	
	42	Service brake	mechanical / hydraulic / electric / pneu		Hydraulic	Hydraulic	Hydraulic	42	
43	Parking brake	foot / hand / seat switch		Hand	Hand	Hand	43		
DRIVE LINE	45	Battery	voltage / capacity (5 hour)	V/AH	12 / 27	12 / 27	12 / 64	45	
	49	Internal Combustion engine	manufacturer / type		NISSAN / K25	NISSAN / K25	MHI / 3.3L-4C	49	
	50		maximum engine rated power	kW/rpm	47 / 2700	40 / 2200	44 / 2300	50	
	51		maximum engine rated torque	Nm/rpm	192 / 1600	186 / 1600	183 / 1800	51	
	52		number of cylinders / displacement	/ cc	4 / 2488	4 / 2488	4 / 3331	52	
55	Transmission	type		Automatic	Automatic	Automatic (Manual)	55		
		speed		1 / 1	1 / 1	1 / 1 (2 / 2)			
57	Operating pressure	for attachment	MPa	12.7	12.7	12.7	57		

L02-U

Dimensions



Load Capacity Chart



No capacity reduction until 3700 mm height. Load capacities are computed with following conditions, a) Standard 2W Mast and b) Mast in vertical position.

Tire and Tread Specifications

Front Tire	Single	Double
Front Tire Size	250-15-16PR ()	28X9-15-12PR ()
Overall Width mm	1280	1720
Front Tread mm	1060	1230

Ground Clearance

Under mast	mm	150
Under power unit	mm	170
Under frame	mm	190

Mast Specifications & Rated Capacities

UGL02A35JU, UGL02A35DU, UGL02A35U, UGL02A35WU, YGL02A35U, YGL02M35U

Mast type	Mast name	Max. fork Height mm	Overall height			Free lift		Front overhang mm	Tilt angle Forward/ Backward deg	Capacity Single tire Load center 500 mm kg
			Fully lowered mm	Fully extended		Without backrest mm	With STD backrest mm			
				Without backrest mm	With STD backrest mm					
Two stage (Wide view 2W)	2W 300	3000	2180	3760	4055	150	150	490	6/12	3500
	2W 330	3300	2300	4060	4355				6/12	3500
	2W 355	3550	2445	4290	4585				6/12	3500
	2W 370	3700	2510	4480	4775				6/12	3500
	2W 400	4000	2765	4760	5055				6/12	3450
	2W 450	4500	3010	5260	5555				6/6	3400
	2W 500	5000	3260	5760	6055				6/6	3300
Two stage (Full free 2F)	2F 300	3000	2180	3825	4065	1415	1175	490	6/12	3500
	2F 330	3300	2300	4115	4355	1535	1295		6/12	3500
	2F 350	3500	2445	4315	4555	1680	1440		6/12	3500
	2F 400	4000	2765	4815	5055	2000	1760		6/12	3450
Three stage (Full free 3F)	3F 375	3750	1940	4545	4785	1175	935	490	6/6	3500
	3F 400	4000	2060	4825	5065	1295	1055		6/6	3500
	3F 440	4400	2180	5205	5445	1415	1175		6/6	3450
	3F 470	4700	2300	5515	5755	1535	1295		6/6	3400
	3F 505	5050	2445	5845	6085	1680	1440		6/6	3300
	3F 560	5600	2625	6395	6635	1860	1620		6/6	2700
	3F 600	6000	2765	6815	7055	2000	1760		6/6	2000

Main Truck Specifications

Item				UGL02A35JU/DU	UGL02A35U/WU	YGL02A35U (YGL02M35U)			
SPECIFICATIONS	1	Manufacturer		NISSAN	NISSAN	NISSAN	1		
	2	Model		UGL02A35JU/DU	UGL02A35U/WU	YGL02A35U (YGL02M35U)	2		
	3	Load capacity	Q load lifted	kg	3500	3500	3500	3	
	4	Load center	C distance	mm	500	500	500	4	
	5	Power unit	battery, diesel, gasoline, LP gas		Gasoline / Gasoline • LPG	Gasoline / Gasoline • LPG	Diesel	5	
	6	Operator type	walkie, rider / stand, rider / seat		Rider / seat	Rider / seat	Rider / seat	6	
	7	Tire type	front / rear		PNE / PNE	PNE / PNE	PNE / PNE	7	
	8	Wheels(x=driven)	number front / rear		2X / 2	2X / 2	2X / 2	8	
DIMENSIONS	9	Maximum fork height	h3 standard lift height	mm	3000	3000	3000	9	
	10	Free lift	h2 standard free lift	mm	150	150	150	10	
	13	Fork size	s.e.l	mm	45 x 122 x 1070	45 x 122 x 1070	45 x 122 x 1070	13	
		Max. Fork Spread		mm	995	995	995		
		Min. Fork Spread		mm	280	280	280		
	14	Tilt range	/ mast forward / backward	deg	6 / 12	6 / 12	6 / 12	14	
	15	Overall measurement	L2 length to fork face	mm	2755	2755	2755	15	
	16		B overall width	mm	1280	1280	1280	16	
	17		h1 height mast retracted	mm	2180	2180	2180	17	
	18		h4 height mast extended	mm	4055	4055	4055	18	
	19		h6 height overhead guard	mm	2155	2155	2155	19	
	20		h7 height of driver's seat	mm	1055	1055	1055	20	
	21		Turning radius (outside)	Wa	mm	2390	2390	2390	21
22	Load distance	X from center of front axle	mm	490	490	490	22		
23	Right angle stacking aisle	Ast pallets (LxW) 1200x800/1000x1200	mm	4280/4080	4280/4080	4280/4080	23		
PERFORMANCE	24	travelling	full load	km/h	19.0	19.0	19.0	24	
			no load	km/h	19.0	19.0	19.0		
		25	lifting	full load	mm/s	450	400	440	25
				no load	mm/s	470	460	480	
	26	lowering	full load	mm/s	420	420	420	26	
			no load	mm/s	360	360	360		
28	Max. drawbar pull	full load / no load 5min.	N	17750 / 17650	15700 / 17650	17850 / 16350 (17850 / 16350)	28		
29	Gradeability at 2km/h	full load / no load	tan %	23 / -	20 / -	21 / -	29		
30	Max. gradeability	full load / no load	tan %	26 / 22	23 / 22	23 / 22	30		
WEIGHTS	32	Truck weight	no load	kg	4695	4695	4755	32	
	33	Weight distribution	full load	front / rear	kg	7225 / 970	7225 / 970	7215 / 1040	33
			no load	front / rear	kg	1695 / 3000	1695 / 3000	1690 / 3065	
	34							34	
CHASSIS & WHEELS	35	Tires	number	front / rear	each	2 / 2	2 / 2	2 / 2	35
			size-front			250-15-16PR ()	250-15-16PR ()	250-15-16PR ()	36
			size-rear			6.50-10-12PR ()	6.50-10-12PR ()	6.50-10-12PR ()	37
	38	Wheelbase	y	mm	1700	1700	1700	38	
	39	Tread	sprw 1 / sprw 2 front / rear	mm	1060 / 980	1060 / 980	1060 / 980	39	
		Backrest height	Hb top of backrest ~ upper of fork face	mm	975	975	975		
		Overhead guard clearance	Hh	mm	1080	1080	1080		
		Counterweight height	Hc	mm	1105	1105	1105		
	40	Ground clearance	m1 full load minimum	mm	150	150	150	40	
	41		m2 full load center of wheelbase	mm	170	170	170	41	
42	Service brake	mechanical / hydraulic / electric / pneu		Hydraulic	Hydraulic	Hydraulic	42		
43	Parking brake	foot / hand / seat switch		Hand	Hand	Hand	43		
DRIVE LINE	45	Battery	voltage / capacity (5 hour)	V/AH	12 / 27	12 / 27	12 / 64	45	
	49	Internal Combustion engine	manufacturer / type		NISSAN / K25	NISSAN / K25	MHI / 3.3L-4C	49	
	50		maximum engine rated power	kW/rpm	47 / 2700	40 / 2200	44 / 2300	50	
	51		maximum engine rated torque	Nm/rpm	192 / 1600	186 / 1600	183 / 1800	51	
	52		number of cylinders / displacement	/ cc	4 / 2488	4 / 2488	4 / 3331	52	
55	Transmission	type		Automatic	Automatic	Automatic (Manual)	55		
		speed		1 / 1	1 / 1	1 / 1 (2 / 2)			
57	Operating pressure	for attachment	MPa	12.7	12.7	12.7	57		

L02-U

Loading Capacity

PL02A20JU, PL02A20DU, PL02A20U, PL02A20WU, UL02A20JU, UL02A20DU,
UL02A20U, UL02M20U, UL02A20WU, UL02M20WU, YL02A20U, YL02M20U,

Unit: kg

Load center		500mm	600	700	800	900	1000	1100	1200	1300	1400	1500
Mast name												
Single tire	2W300	2000	1810	1655	1520	1410	1310	1225	1155	1085	1030	975
	2W330	2000	1810	1655	1520	1410	1310	1225	1155	1085	1030	975
	2W350	2000	1810	1655	1520	1410	1310	1225	1155	1085	1030	975
	2W370	2000	1810	1655	1520	1410	1310	1225	1155	1085	1030	975
	2W400	2000	1810	1655	1520	1410	1310	1225	1155	1085	1030	975
	2W450	1950	1765	1610	1485	1375	1280	1195	1125	1060	1005	950
	2W500	1700	1540	1405	1295	1195	1115	1045	980	925	875	830
	2F300	2000	1810	1655	1520	1410	1310	1225	1155	1085	1030	975
	2F330	2000	1810	1655	1520	1410	1310	1225	1155	1085	1030	975
	2F350	2000	1810	1655	1520	1410	1310	1225	1155	1085	1030	975
	2F370	2000	1810	1655	1520	1410	1310	1225	1155	1085	1030	975
	2F400	2000	1810	1655	1520	1410	1310	1225	1155	1085	1030	975
	*2F420	1950	1765	1610	1485	1375	1280	1195	1125	1060	1005	950
	**2F420	2000	1810	1655	1520	1410	1310	1225	1155	1085	1030	975
	3F385	2000	1815	1660	1530	1415	1320	1235	1160	1095	1040	985
	3F430	1900	1720	1575	1450	1345	1255	1175	1105	1040	985	935
	3F475	1800	1630	1490	1375	1275	1190	1110	1045	985	935	885
	3F515	1550	1405	1285	1185	1100	1025	960	900	850	805	765
	3F550	1450	1315	1200	1110	1025	955	895	840	795	750	715
	3F600	900	815	745	685	635	595	555	525	495	465	445
Double tire	2W300	2000	1810	1655	1520	1410	1310	1225	1155	1085	1030	975
	2W330	2000	1810	1655	1520	1410	1310	1225	1155	1085	1030	975
	2W350	2000	1810	1655	1520	1410	1310	1225	1155	1085	1030	975
	2W370	2000	1810	1655	1520	1410	1310	1225	1155	1085	1030	975
	2W400	2000	1810	1655	1520	1410	1310	1225	1155	1085	1030	975
	2W450	1950	1765	1610	1485	1375	1280	1195	1125	1060	1005	950
	2W500	1850	1675	1530	1405	1305	1215	1135	1065	1005	950	905
	2F300	2000	1810	1655	1520	1410	1310	1225	1155	1085	1030	975
	2F330	2000	1810	1655	1520	1410	1310	1225	1155	1085	1030	975
	2F350	2000	1810	1655	1520	1410	1310	1225	1155	1085	1030	975
	2F370	2000	1810	1655	1520	1410	1310	1225	1155	1085	1030	975
	2F400	2000	1810	1655	1520	1410	1310	1225	1155	1085	1030	975
	*2F420	1950	1765	1610	1485	1375	1280	1195	1125	1060	1005	950
	**2F420	2000	1810	1655	1520	1410	1310	1225	1155	1085	1030	975
	3F385	2000	1815	1660	1530	1415	1320	1235	1160	1095	1040	985
	3F430	1900	1720	1575	1450	1345	1255	1175	1105	1040	985	935
	3F475	1850	1675	1535	1415	1310	1220	1145	1075	1015	960	910
	3F515	1800	1630	1490	1375	1275	1190	1110	1045	985	935	885
	3F550	1750	1585	1450	1335	1240	1155	1080	1015	960	910	860
	3F600	1650	1495	1370	1260	1170	1090	1020	960	905	855	815
3F650	1550	1405	1285	1185	1100	1025	960	900	850	805	765	
3F700	1200	1090	995	915	850	790	740	695	660	625	590	

* For PL02 and UL02 models.

** For YL02 model.

PL02A25JU, PL02A25DU, PL02A25U, PL02A25WU, UL02A25JU, UL02M25JU, UL02A25DU, UL02M25DU, UL02A25U, UL02M25U, UL02A25WU, UL02M25WU, YL02A25U, YL02M25U

Unit: kg

Load center		Mast name										
		500mm	600	700	800	900	1000	1100	1200	1300	1400	1500
Single tire	2W300	2500	2260	2065	1900	1760	1640	1535	1440	1360	1285	1220
	2W330	2500	2260	2065	1900	1760	1640	1535	1440	1360	1285	1220
	2W350	2500	2260	2065	1900	1760	1640	1535	1440	1360	1285	1220
	2W370	2500	2260	2065	1900	1760	1640	1535	1440	1360	1285	1220
	2W400	2500	2260	2065	1900	1760	1640	1535	1440	1360	1285	1220
	2W450	2150	1945	1775	1635	1515	1410	1320	1240	1170	1105	1050
	2W500	1850	1675	1530	1405	1305	1215	1135	1065	1005	950	905
	2F300	2500	2260	2065	1900	1760	1640	1535	1440	1360	1285	1220
	2F330	2500	2260	2065	1900	1760	1640	1535	1440	1360	1285	1220
	2F350	2500	2260	2065	1900	1760	1640	1535	1440	1360	1285	1220
	2F370	2500	2260	2065	1900	1760	1640	1535	1440	1360	1285	1220
	2F400	2500	2260	2065	1900	1760	1640	1535	1440	1360	1285	1220
	*2F420	2450	2215	2025	1865	1725	1605	1505	1415	1330	1260	1195
	**2F420	2500	2260	2065	1900	1760	1640	1535	1440	1360	1285	1220
	3F385	2500	2265	2075	1910	1770	1650	1545	1455	1370	1300	1230
	3F430	2300	2085	1905	1755	1630	1520	1420	1335	1260	1195	1135
	3F475	2000	1815	1660	1530	1415	1320	1235	1160	1095	1040	985
	3F515	1750	1585	1450	1335	1240	1155	1080	1015	960	910	860
	3F550	1600	1450	1325	1220	1135	1055	990	930	875	830	790
	3F600	1000	905	830	765	710	660	620	580	550	520	490
Double tire	2W300	2500	2260	2065	1900	1760	1640	1535	1440	1360	1285	1220
	2W330	2500	2260	2065	1900	1760	1640	1535	1440	1360	1285	1220
	2W350	2500	2260	2065	1900	1760	1640	1535	1440	1360	1285	1220
	2W370	2500	2260	2065	1900	1760	1640	1535	1440	1360	1285	1220
	2W400	2500	2260	2065	1900	1760	1640	1535	1440	1360	1285	1220
	2W450	2450	2215	2025	1865	1725	1605	1505	1415	1330	1260	1195
	2W500	2350	2125	1940	1785	1655	1540	1440	1355	1280	1210	1145
	2F300	2500	2260	2065	1900	1760	1640	1535	1440	1360	1285	1220
	2F330	2500	2260	2065	1900	1760	1640	1535	1440	1360	1285	1220
	2F350	2500	2260	2065	1900	1760	1640	1535	1440	1360	1285	1220
	2F370	2500	2260	2065	1900	1760	1640	1535	1440	1360	1285	1220
	2F400	2500	2260	2065	1900	1760	1640	1535	1440	1360	1285	1220
	*2F420	2450	2215	2025	1865	1725	1605	1505	1415	1330	1260	1195
	**2F420	2500	2260	2065	1900	1760	1640	1535	1440	1360	1285	1220
	3F385	2500	2265	2075	1910	1770	1650	1545	1455	1370	1300	1230
	3F430	2400	2175	1990	1835	1700	1585	1485	1395	1315	1245	1180
	3F475	2300	2085	1905	1755	1630	1520	1420	1335	1260	1195	1135
	3F515	2250	2040	1865	1720	1595	1485	1390	1310	1235	1170	1110
	3F550	2200	1995	1825	1680	1560	1450	1360	1280	1205	1140	1085
	3F600	2100	1905	1740	1605	1485	1385	1300	1220	1150	1090	1035
3F650	1650	1495	1370	1260	1170	1090	1020	960	905	855	815	
3F700	1300	1180	1080	995	920	860	805	755	715	675	640	

* For PL02 and UL02 models.

** For YL02 model.

L02-U

UGL02A30JU, UGL02A30DU, UGL02A30U, UGL02A30WU, YGL02A30U, YGL02M30U

Unit: kg

Load center		500mm	600	700	800	900	1000	1100	1200	1300	1400	1500
Mast name												
Single tire	2W300	3000	2725	2495	2300	2135	1990	1865	1755	1655	1565	1490
	2W330	3000	2725	2495	2300	2135	1990	1865	1755	1655	1565	1490
	2W350	3000	2725	2495	2300	2135	1990	1865	1755	1655	1565	1490
	2W370	3000	2725	2495	2300	2135	1990	1865	1755	1655	1565	1490
	2W400	3000	2725	2495	2300	2135	1990	1865	1755	1655	1565	1490
	2W450	2700	2450	2245	2070	1920	1790	1675	1580	1490	1410	1340
	2W500	2200	1995	1830	1685	1565	1460	1365	1285	1215	1150	1090
	2F300	3000	2725	2495	2300	2135	1990	1865	1755	1655	1565	1490
	2F330	3000	2725	2495	2300	2135	1990	1865	1755	1655	1565	1490
	2F350	3000	2725	2495	2300	2135	1990	1865	1755	1655	1565	1490
	2F370	3000	2725	2495	2300	2135	1990	1865	1755	1655	1565	1490
	2F400	3000	2725	2495	2300	2135	1990	1865	1755	1655	1565	1490
	*2F420	2950	2680	2450	2260	2100	1955	1835	1725	1625	1540	1465
	**2F420	3000	2725	2495	2300	2135	1990	1865	1755	1655	1565	1490
	3F385	3000	2725	2495	2300	2135	1990	1865	1755	1655	1565	1490
	3F430	2900	2630	2410	2220	2060	1925	1800	1695	1600	1515	1440
	3F475	2650	2405	2200	2030	1885	1755	1645	1550	1460	1385	1315
	3F515	2000	1815	1660	1535	1420	1325	1240	1170	1105	1045	990
	3F550	1650	1495	1370	1265	1175	1095	1025	965	910	860	820
	3F600	1150	1045	955	880	815	760	715	670	635	600	570
Double tire	2W300	3000	2725	2495	2300	2135	1990	1865	1755	1655	1565	1490
	2W330	3000	2725	2495	2300	2135	1990	1865	1755	1655	1565	1490
	2W350	3000	2725	2495	2300	2135	1990	1865	1755	1655	1565	1490
	2W370	3000	2725	2495	2300	2135	1990	1865	1755	1655	1565	1490
	2W400	3000	2725	2495	2300	2135	1990	1865	1755	1655	1565	1490
	2W450	2950	2680	2450	2260	2100	1955	1835	1725	1625	1540	1465
	2W500	2850	2585	2370	2185	2025	1890	1770	1665	1570	1490	1415
	2F300	3000	2725	2495	2300	2135	1990	1865	1755	1655	1565	1490
	2F330	3000	2725	2495	2300	2135	1990	1865	1755	1655	1565	1490
	2F350	3000	2725	2495	2300	2135	1990	1865	1755	1655	1565	1490
	2F370	3000	2725	2495	2300	2135	1990	1865	1755	1655	1565	1490
	2F400	3000	2725	2495	2300	2135	1990	1865	1755	1655	1565	1490
	*2F420	2950	2680	2450	2260	2100	1955	1835	1725	1625	1540	1465
	**2F420	3000	2725	2495	2300	2135	1990	1865	1755	1655	1565	1490
	3F385	3000	2725	2495	2300	2135	1990	1865	1755	1655	1565	1490
	3F430	2950	2680	2450	2260	2100	1955	1835	1725	1625	1540	1465
	3F475	2850	2585	2370	2185	2025	1890	1770	1665	1570	1490	1415
	3F515	2650	2405	2200	2030	1885	1755	1645	1550	1460	1385	1315
	3F550	2600	2360	2160	1990	1850	1725	1615	1520	1435	1360	1290
	3F600	2500	2270	2080	1915	1775	1660	1555	1460	1380	1305	1240
3F650	2200	1995	1830	1685	1565	1460	1365	1285	1215	1150	1090	
3F700	1900	1725	1580	1455	1350	1260	1180	1110	1050	990	940	

* For UGL02 model.

** For YGL02 model.

UGL02A35JU, UGL02A35DU, UGL02A35U, UGL02A35WU, YGL02A35U, YGL02M35U

Unit: kg

Load center		500mm	600	700	800	900	1000	1100	1200	1300	1400	1500	
Mast name													
Single tire	2W300	3500	3175	2910	2680	2490	2320	2175	2045	1930	1830	1735	
	2W330	3500	3175	2910	2680	2490	2320	2175	2045	1930	1830	1735	
	2W355	3500	3175	2910	2680	2490	2320	2175	2045	1930	1830	1735	
	2W370	3500	3175	2910	2680	2490	2320	2175	2045	1930	1830	1735	
	2W400	3450	3130	2865	2645	2455	2290	2145	2015	1905	1800	1710	
	2W450	3400	3085	2825	2605	2420	2255	2110	1985	1875	1775	1685	
	2W500	3300	2995	2745	2530	2345	2190	2050	1930	1820	1725	1635	
	2F300	3500	3175	2910	2680	2490	2320	2175	2045	1930	1830	1735	
	2F330	3500	3175	2910	2680	2490	2320	2175	2045	1930	1830	1735	
	2F350	3500	3175	2910	2680	2490	2320	2175	2045	1930	1830	1735	
	2F400	3450	3130	2865	2645	2455	2290	2145	2015	1905	1800	1710	
	3F375	3500	3175	2910	2680	2490	2320	2175	2045	1930	1830	1735	
	3F400	3500	3175	2910	2680	2490	2320	2175	2045	1930	1830	1735	
	3F440	3450	3130	2865	2645	2455	2290	2145	2015	1905	1800	1710	
	3F470	3400	3085	2825	2605	2420	2255	2110	1985	1875	1775	1685	
	3F505	3300	2995	2745	2530	2345	2190	2050	1930	1820	1725	1635	
	3F560	2700	2450	2245	2070	1920	1790	1675	1580	1490	1410	1340	
	3F600	2000	1815	1660	1535	1420	1325	1240	1170	1105	1045	990	
	Double tire	2W300	3500	3175	2910	2680	2490	2320	2175	2045	1930	1830	1735
		2W330	3500	3175	2910	2680	2490	2320	2175	2045	1930	1830	1735
2W355		3500	3175	2910	2680	2490	2320	2175	2045	1930	1830	1735	
2W370		3500	3175	2910	2680	2490	2320	2175	2045	1930	1830	1735	
2W400		3450	3130	2865	2645	2455	2290	2145	2015	1905	1800	1710	
2W450		3400	3085	2825	2605	2420	2255	2110	1985	1875	1775	1685	
2W500		3300	2995	2745	2530	2345	2190	2050	1930	1820	1725	1635	
2F300		3500	3175	2910	2680	2490	2320	2175	2045	1930	1830	1735	
2F330		3500	3175	2910	2680	2490	2320	2175	2045	1930	1830	1735	
2F350		3500	3175	2910	2680	2490	2320	2175	2045	1930	1830	1735	
2F400		3450	3130	2865	2645	2455	2290	2145	2015	1905	1800	1710	
3F375		3500	3175	2910	2680	2490	2320	2175	2045	1930	1830	1735	
3F400		3500	3175	2910	2680	2490	2320	2175	2045	1930	1830	1735	
3F440		3450	3130	2865	2645	2455	2290	2145	2015	1905	1800	1710	
3F470		3400	3085	2825	2605	2420	2255	2110	1985	1875	1775	1685	
3F505		3300	2995	2745	2530	2345	2190	2050	1930	1820	1725	1635	
3F560		3200	2905	2660	2450	2275	2120	1990	1870	1765	1670	1585	
3F600		3100	2815	2575	2375	2205	2055	1925	1810	1710	1620	1540	

L02-U

Truck Weight

		Unit:kg							
Mast type	Mast name	PL02	UL02	YL02	PL02	UL02	YL02	UGL02	YGL02
		20	20	20	25	25	25	30	30
Two stage (Wide view 2W)	2W300	3310	3310	3460	3650	3650	3800	4225	4285
	2W330	3335	3335	3485	3675	3675	3825	4255	4315
	2W350	3355	3355	3510	3695	3695	3850	4275	4335
	2W370	3400	3400	3555	3740	3740	3895	4325	4385
	2W400	3430	3430	3585	3770	3770	3925	4355	4415
	2W450	3475	3475	3625	3815	3815	3965	4400	4460
	2W500	3515	3515	3665	3855	3855	4005	4445	4505
Two stage (Full free 2F)	2F300	3330	3330	3485	3670	3670	3825	4255	4315
	2F330	3355	3355	3510	3695	3695	3850	4280	4340
	2F350	3380	3380	3530	3720	3720	3870	4305	4365
	2F370	3415	3415	3570	3755	3755	3910	4345	4405
	2F400	3450	3450	3605	3790	3790	3945	4380	4440
	2F420	3470	3470	3620	3810	3810	3960	4400	4460
Three stage (Full free 3F)	3F385	3500	3500	3655	3840	3840	3995	4465	4525
	3F430	3535	3535	3690	3875	3875	4030	4505	4565
	3F475	3575	3575	3730	3915	3915	4070	4545	4605
	3F515	3610	3610	3760	3950	3950	4100	4610	4670
	3F550	3670	3670	3825	4010	4010	4165	4660	4720
	3F600	3720	3720	3875	4060	4060	4215	4725	4785
	3F650	3885	3885	4035	4225	4225	4375	4855	4915
	3F700	3945	3945	4100	4285	4285	4440	4920	4980
Truck weight without mast		2630	2630	2785	2970	2970	3125	3495	3555

Add 100 kg for 20 and 25 double tire models. 65 kg for 30 double tire models.
Figures in are for double tire models.

		Unit:kg	
Mast type	Mast name	UGL02	YGL02
		35	35
Two stage (Wide view 2W)	2W 300	4695	4755
	2W 330	4730	4790
	2W 355	4755	4815
	2W 370	4790	4850
	2W 400	4835	4895
	2W 450	4905	4965
	2W 500	4965	5025
Two stage (Full free 2F)	2F 300	4725	4785
	2F 330	4765	4825
	2F 350	4790	4850
	2F 400	4875	4935
Three stage (Full free 3F)	3F 375	4905	4965
	3F 400	4935	4995
	3F 440	4970	5030
	3F 470	5000	5060
	3F 505	5085	5145
	3F 560	5140	5200
	3F 600	5175	5235
Truck weight without mast		3860	3920

Add 60 kg for 35 double tire models.

Additional Truck Weight

TIRE WEIGHT

		Model(Capacity code)	Unit:kg		
			20-25	30	35
Front	Single	Pneumatic	±0	±0	±0
		Solid	+55	+65	+40
		Color Solid (White/Green)	+65	+70	+45
		AirBoss	+55	+65	-
	Double	Pneumatic	±0	±0	±0
		Solid	+110	+150	+65
		Color Solid (White/Green)	+130	+140	+70
Rear	Single	Pneumatic	±0	±0	±0
		Solid	+35	+45	+45
		Color Solid (White/Green)	+45	+50	+50
		AirBoss	+35	+45	-

LPG SYSTEM

		Type	20-35
Without Bottle, Bracket, Hose		LPGC	+5
Swing-back	Bottle+Bracket+Hose	LPGA	+35
	NO Bottle+Bracket+Hose	LPGB	+15
	NO Bottle+Bracket+NO Hose	LPGE	+15
Swing-open	Bottle+Bracket+Hose	LPGF	+40
	NO Bottle+Bracket+Hose	LPGG	+20
	NO Bottle+Bracket+NO Hose	LPGH	+20
Swing-down	Bottle+Bracket+Hose	LPGP	+40
	NO Bottle+Bracket+Hose	LPGQ	+20
	NO Bottle+Bracket+NO Hose	LPGR	+20

FORKS

		Model(Capacity code)	Unit:kg		
			20-25	30	35
Fork length (mm)	Less fork		-110	-130	-130
	920		-10	-10	-
	1000		-5	-	-
	1070		±0	±0	±0
	1100		+5	+5	-
	1150		+5	+10	+10
	1200		+10	+10	-
	1220		+10	+10	+10
	1300		+20	+15	-
	1370		+25	+25	+25
	1400		+25	+25	-
	1520		+50	+30	+30
	1620		+60	+40	+40
	1800		+75	+70	-
	2000		+90	+80	-

CABIN

Model(Capacity code)	20-35
Windshield	+20
Canvas Cabin	+20
Steel Cabin	+150
Heater & Cooler	+25
Heater	+10
Sub Guard	+15

CARRIAGE & BACKREST

CARRIAGE	BACKREST	20-25	30	35
Standard	Standard	±0	±0	±0
	High (Plate type)	+5	+5	-
	Less	-25	-30	-
Wide View	Standard	±0	±0	±0
	High (Plate type)	-	-	+15
	High (Angle type)	+10	+10	+5
	Less	-25	-30	-25
Wide	High *1	+35	+45	-
Extra Wide	High	+55	+60	-

*1 Except ANGLE & WIDE HIGH BACKREST

L02-U

Option Availability

		PL02/UL02 20-25				YL02 20-25 Diesel
		ECCS Gasoline	ECCS Dual	Carburetor Gasoline	Carburetor Dual	
Item						
Engine	ECCS (Electronic Concentrated Control System) type			-	-	-
	Carburetor type	-	-			-
	Speed & Power / Eco selector			-	-	-
Cooling system	Corrugated fin type radiator					
	Radiator screen					
	Oil cooler (Radiator built-in type) (A/T model)					
	30% density LLC (Non-amine)					
	50% density LLC (Non-amine)					
Intake system	Super air intake system					
	Cyclone air cleaner					
Exhaust system	Standard muffler	-	-			
	Overhead exhaust muffler					
	Three way catalytic muffler			-	-	-
	Diesel Particulate Filter (DPF)	-	-	-	-	
	Anti-fire spark muffler (cyclone)	-	-	-	-	
LPG system (Dual fuel) Swing-back Swing-open Swing-down	Complete system (with LPG bottle)	-		-		-
	Without LPG bottle*	-		-		-
	Without LPG bottle and hose with bottle bracket	-		-		-
	Without LPG bottle, hose and bottle bracket	-		-		-
Hydraulic control	2 spool valve					
	3 spool valve					
	4 spool valve					
	Single control lever					
	Double control lever					
	3 spool piping to carriage					
	4 spool piping to carriage					
	Quick release type piping connector					
Mast	2-stage outer chain wide view mast (2W)**					
	2-stage full free mast (2F)					
	3-stage full free mast (3F)					
	Mast less					
	Mast protector					
	Tilt Cylinder Cover					
	Tilt Cylinder Boots					
	Tilt leveling system (2W mast only)					
Carriage & Backrest	Wide carriage					
	Extra wide carriage					
	ANSI type high backrest					
	Wide backrest					
	Extra wide backrest					
Fork	Without backrest					
	Long fork**					
Steering system	Tilt steering					
	Hydrostatic power steering system					
	Steering knob					
	Steering synchronizer					

* Swing-back type is standard.

** Refer to Fork availability.

Option Availability

		PL02/UL02 20-25				YL02 20-25 Diesel
		ECCS Gasoline	ECCS Dual	Carburetor Gasoline	Carburetor Dual	
	Item					
Body	Power train floating					
	Rain guard (Vinyl type)					
	Rain guard (Resin type)					
	Canvas cabin					
	Damper stay for top panel opening					
	Top panel lock					
Seat	Rearview mirrors					
	Restraint seat with suspension					
Meters & Gauge	Seat less					
	Fuel gauge					
	Water temperature gauge					
Lights & Alarm	Hour meter (key on counting)					
	Glow plug lamp (Diesel model)	-	-	-	-	
	Headlights (no guard)					
	Back-up buzzer					
	Turn signal lamps					
	Rear combination lamps					
	Rear working light					
	Rotating light					
	Speedometer					
	Battery charge warning lamp					
	Water separator warning lamp (Diesel model)	-	-	-	-	
	Torque converter fluid temp. warning lamp (A/T model)					
	Air cleaner clogging warning lamp					
	Parking brake warning buzzer					
	Forward/Reverse interlock warning lamp (A/T model)					
	Seatbelt warning lamp					
	Clutch wearing warning lamp (M/T model)					
	Radiator fluid level warning lamp					
	Fuel filter warning lamp (Diesel model)	-	-	-	-	
	Mast interlock warning lamp					
LPG low fuel warning lamp	-		-		-	
3-stage lighting switch						
Brake	Toggle joint type parking brake with warning buzzer					
Tires & Rims	J-lug tire (Textile)					
	Pneumatic type solid tire					
	AirBoss tire					
	Double tire					
	Built-in bolt type disc wheels					
Tool	Spare tires (1 for front and 1 for rear)					
	Tool kit					
Rust-proof specifications	Tool kit with jack					
Label	English					
	German					
	French					
	Spanish					

L02-U

Option Availability

		UGL02 30-35				YGL02 30-35 Diesel
		ECCS Gasoline	ECCS Dual	Carburetor Gasoline	Carburetor Dual	
Item						
Engine	ECCS (Electronic Concentrated Control System) type			-	-	-
	Carburetor type	-	-			-
	Speed & Power Eco selector			-	-	-
Cooling system	Corrugated fin type radiator					
	Radiator screen					
	Oil cooler (Radiator built-in type) (A/T model)					
	30% density LLC (Non-amine)					
	50% density LLC (Non-amine)					
Intake system	Super air intake system					
	Cyclone air cleaner					
Exhaust system	Standard muffler	-	-			
	Overhead exhaust muffler					
	Three way catalytic muffler			-	-	-
	Diesel Particulate Filter (DPF)	-	-	-	-	
	Anti-fire spark muffler (cyclone)	-	-	-	-	
LPG system (Dual fuel) Swing-back Swing-open Swing-down	Complete system (with LPG bottle)	-		-		-
	Without LPG bottle*	-		-		-
	Without LPG bottle and hose with bottle bracket	-		-		-
	Without LPG bottle, hose and bottle bracket	-		-		-
Hydraulic control	2 spool valve					
	3 spool valve					
	4 spool valve					
	Single control lever					
	Double control lever					
	3 spool piping to carriage					
	4 spool piping to carriage					
	Quick release type piping connector					
Mast	2-stage outer chain wide view mast (2W)**					
	2-stage full free mast (2F)					
	3-stage full free mast (3F)					
	Mast less					
	Mast protector					
	Tilt Cylinder Cover					
	Tilt Cylinder Boots					
	Tilt leveling system (2W mast only)***					
Carriage & Backrest	Wide carriage					
	Extra wide carriage					
	ANSI type high backrest					
	Wide backrest					
	Without backrest					
Fork	Long fork****					
Steering system	Tilt steering					
	Hydrostatic power steering system					
	Steering knob					
	Steering synchronizer					

* Swing-back type is standard.

** Except for 3.5 ton model.

*** This option is not available for 3.5 ton model.

**** Refer to Fork availability.

Option Availability

		UGL02 30-35				YGL02 30-35 Diesel
		ECCS Gasoline	ECCS Dual	Carburetor Gasoline	Carburetor Dual	
	Item					
Body	Power train floating					
	Rain guard (Vinyl type)					
	Rain guard (Resin type)					
	Canvas cabin					
	Damper stay for top panel opening					
	Top panel lock					
Seat	Rearview mirrors					
	Restraint seat with suspension					
Meters & Gauge	Seat less					
	Fuel gauge					
	Water temperature gauge					
Lights & Alarm	Hour meter (key on counting)					
	Glow plug lamp (Diesel model)	-	-	-	-	
	Headlights (no guard)					
	Back-up buzzer					
	Turn signal lamps					
	Rear combination lamps					
	Rear working light					
	Rotating light					
	Speedometer					
	Battery charge warning lamp					
	Water separator warning lamp (Diesel model)	-	-	-	-	
	Torque converter fluid temp. warning lamp (A/T model)					
	Air cleaner clogging warning lamp					
	Parking brake warning buzzer					
	Forward/Reverse interlock warning lamp (A/T model)					
	Seatbelt warning lamp					
	Clutch wearing warning lamp (M/T model)					
	Radiator fluid level warning lamp					
	Fuel filter warning lamp (Diesel model)	-	-	-	-	
	Mast interlock warning lamp					
LPG low fuel warning lamp	-		-		-	
3-stage lighting switch						
Brake	Toggle joint type parking brake with warning buzzer					
Tires & Rims	J-lug tire (Textile)					
	Pneumatic type solid tire					
	AirBoss tire*					
	Double tire					
	Built-in bolt type disc wheels					
Tool	Spare tires (1 for front and 1 for rear)					
	Tool kit					
Label	Tool kit with jack					
	Rust-proof specifications					
	English					
Label	German					
	French					
	Spanish					

* This option is not available for 3.5 ton model.

L02-U

Fork Availability

Length (mm) \ Model		...Standard ...Option		
		L02		
		20-25	30	35
Fork	Less fork			
	920			
	1000		-	-
	1070			
	1150			
	1220			
	1370			
Extension fork	1520			
	1200			
	1300			
	1500			
	1600			
	1700			
	1800			
	2000			

Fork Dimensions

	Width [W] × Thickness [T] mm		
	20-25	30	35
All length	122 × 40	125 × 45	122 × 45

Carriage & Backrest Dimensions

Carriage				
Model		L02 20 - 25	GL02 30	GL02 35
Class		Class II	Class III	Class III
**Numbers of rollers (not include side rollers)		6	6	6
Carriage width [W] mm	Standard	1020	1020	1000
	Wide	1335	1335	1300
	*Extra wide	*1550	1550	1600
Max. fork spread mm	Standard	1005	1005	995
	Wide	1320	1320	1295
	*Extra wide	1535	1535	1595

Backrest				
Model		L02 20 - 25	L02 30	L02 35
Backrest height [H] mm	Standard	1005	1095	1060
	High backrest	1215	1310	1260
	Wide backrest	1215	1310	1260
	Extra wide backrest	1215	1310	1260
Backrest width [L] mm	Standard & high backrest	1045	1045	1025
	Wide backrest	1360	1360	1325
	Extra wide backrest	1575	1575	1625
Plate thickness [T] mm		12	12	12

* Two stage mast (2W) only

** Except for three stage mast (3F).

Numbers of rollers for three stage mast is 4 pieces.(30)only

Tire Size

Tire		Model	...Standard ...Option		
			L02		
		20-25	30	35	
Front	Single Type	Tire size (STD)	7.00-12-12PR(I)	28 x 9-15-12PR(I)	250-15-16PR(I)
		Rim size (STD)	5.00S x 12DT	7.00T x 15IRA	7.00T x 15IRA
		J-lug textile			
		AirBoss tire	7.00-12	28 x 9-15	-
		Pneumatic type solid	7.00-12	28 x 9-15	250-15
		Tire size (STD)	7.00-12-12PR(I)	28 x 8-15-12PR(I)	28 x 9-15-12PR(I)
	Double Type	Rim size (STD)	INR 5.00S x 12DT OTR 5.00S x 12TB	6.00S x 15IRA	7.00T x 15IRA
		J-lug textile			
		AirBoss tire	7.00-12	-	-
		Pneumatic type solid	7.00-12	7.00-15	28 x 9-15
		Tire size (STD)	6.00-9-10PR(I)	6.50-10-10PR(I)	6.50-10-12PR(I)
		Rim size (STD)	4.00E x 9DT	5.00F x 10DT	5.00F x 10TB
Rear	Single Type	J-lug textile			
		AirBoss tire	6.00-9	6.50-10	-
		Pneumatic type solid	6.00-9	6.50-10	6.50-10

TOOL OPTIONS

			L02
			Pneumatic
Tool kit	Wrench	8 x 10	O
		10 x 12	
		12 x 14	O
		14 x 17	O
		13 x 17	
	Screwdrivers	O	
	Wheel nut wrench	O	
	Thermometer		
	Gravi-meter		
	Tool bag	O	
Jack		O*	

* Jack is available by separate request.

L02-U

Unit Specification

		PL02-U			
ENGINE SYSTEM	Model	K21			
	Classification	ECCS Gasoline	ECCS Dual Gasoline / LPG	Carburetor Gasoline	Carburetor Gasoline/LPG
	Cycle	4			
	Type	4 cylinder in-line OHV			
	Displacement	cm ³	2065		
	Bore x Stroke	mm	89 x 83		
	Compression ratio	8.7			
	Air cleaner	Cyclone type, dry element			
	Governor				Pneumatic type (Specified speed range control)
	Oil filter	Cartridge type			
	Oil pump	Gear type			
	Injection pump	Electronic fuel injection type (GAS:MPI / LPG:SPI)			
	Fuel pump	Diaphragm type			
	Water pump	Centrifuge type			
	Radiator	Corrugated fin			
	Battery	12V-27AH			
	Alternator	12V-50AH			
Starter motor	12V-1.2 kW (Conventional type)				
TRANSMISSION	Automatic	Torque converter type	3-element, 1-stage, 2-phase		
		Transmission type	Constant mesh, Power shift, One forward, One reverse speed. With neutral start switch. Wet multi-disc hydraulic clutch.		
	Manual	Clutch type	Single, dry friction disc		
		Transmission type	Full synchromesh, two speeds forward and reverse		
STEERING SYSTEM	Type	Fully hydrostatic power steering			
	Steering unit	ORBITROL			
	Power cylinder	Mounted on steering axle			
	Steering wheel	Tilting type			
DRIVE AXLE	Type	Propeller shaft type			
	Final gear	Hypoid gear			
STEERING AXLE	Type	Center pin system			
	Suspension system	Rubber bushing mounted			
BRAKE SYSTEM	Service brake	Hydraulic, Duo-servo with auto-adjuster. Operates on drive wheels			
	Parking brake	Dead point rock type, Mechanically operates on drive wheels			
FRAME & BODY	Frame structure	Integral, All welded frame			
	Overhead guard	Strength conforms to ISO, ANSI standards			
	Fuel tank	2.0-2.5ton:63 liters 3.0-3.5ton:69 liters			
	Hydraulic oil tank	2ton:45 liters 3ton: 50 liters Upper limit on level gauge			
HYDRAULIC SYSTEM	Hydraulic oil pump	Gear type, used for hoisting and power steering			
	Control valve	Sectional type with tilt lock valve			
	Lift cylinder	With flow regulator valve			
	Oil filter	150 mesh suction filter, 20 micron filter on the return circuit			
LOADING SYSTEM	Mast	All roller mast, Grease sealed roller bearing			
	Carriage	2.0-2.5ton: Class II 3.0-3.5ton: Class III			
	Forks	Forged alloy steel, Hook type, Conforms to ITA standards			
INSTRUMENTS	Gauge & meter	Torque converter fluid temperature warning lamp (A/T model) / Fuel gauge / Water temperature gauge / Hour meter			
	Light	Battery charge warning lamp / Engine oil pressure warning light/Glow plug pilot lamp (Diesel only) / PKB warning lamp / Seat belt warning lamp / Neutral position lamp / AT interlock operating lamp / LPG low fuel warning lamp / Mast interlock operating lamp			
	Switch & knob	Lighting switch / Starter switch			

		U(G)L02-U				
ENGINE SYSTEM	Model		K25			
	Classification		ECCS Gasoline	ECCS Dual Gasoline / LPG	Carburetor Gasoline	Carburetor Gasoline/LPG
	Cycle		4			
	Type		4 cylinder in-line OHV			
	Displacement cm ³		2488			
	Bore x Stroke mm		89 x 100			
	Compression ratio		8.7			
	Air cleaner		Cyclone type, dry element			
	Governor		Pneumatic type (Specified speed range control)			
	Oil filter		Cartridge type			
	Oil pump		Gear type			
	Injection pump		Electronic fuel injection type (GAS:MPI / LPG:SPI)			
	Fuel pump		Diaphragm type			
	Water pump		Centrifuge type			
	Radiator		Corrugated fin			
	Battery		12V-27AH			
Alternator		12V-50AH				
Starter motor		12V-1.2 kW (Conventional type)				
TRANSMISSION	Automatic	Torque converter type	3-element, 1-stage, 2-phase			
		Transmission type	Constant mesh, Power shift, One forward, One reverse speed. With neutral start switch. Wet multi-disc hydraulic clutch.			
	Manual	Clutch type	Single, dry friction disc			
		Transmission type	Full synchromesh, two speeds forward and reverse			
STEERING SYSTEM	Type		Fully hydrostatic power steering			
	Steering unit		ORBITROL			
	Power cylinder		Mounted on steering axle			
	Steering wheel		Tilting type			
DRIVE AXLE	Type		Propeller shaft type			
	Final gear		Hypoid gear			
STEERING AXLE	Type		Center pin system			
	Suspension system		Rubber bushing mounted			
BRAKE SYSTEM	Service brake		Hydraulic, Duo-servo with auto-adjuster. Operates on drive wheels			
	Parking brake		Dead point rock type, Mechanically operates on drive wheels			
FRAME & BODY	Frame structure		Integral, All welded frame			
	Overhead guard		Strength conforms to ISO, ANSI standards			
	Fuel tank		2.0-2.5ton:63 liters 3.0-3.5ton:69 liters			
	Hydraulic oil tank		2ton:45 liters 3ton: 50 liters Upper limit on level gauge			
HYDRAULIC SYSTEM	Hydraulic oil pump		Gear type, used for hoisting and power steering			
	Control valve		Sectional type with tilt lock valve			
	Lift cylinder		With flow regulator valve			
	Oil filter		150 mesh suction filter, 20 micron filter on the return circuit			
LOADING SYSTEM	Mast		All roller mast, Grease sealed roller bearing			
	Carriage		2.0-2.5ton: Class II 3.0-3.5ton: Class III			
	Forks		Forged alloy steel, Hook type, Conforms to ITA standards			
INSTRUMENTS	Gauge & meter		Torque converter fluid temperature warning lamp (A/T model) / Fuel gauge / Water temperature gauge / Hour meter			
	Light		Battery charge warning lamp / Engine oil pressure warning light/Glow plug pilot lamp (Diesel only) / PKB warning lamp / Seat belt warning lamp / Neutral position lamp / AT interlock operating lamp / LPG low fuel warning lamp / Mast interlock operating lamp			
	Switch & knob		Lighting switch / Starter switch			

L02-U

		Y(G)L02-U	
ENGINE SYSTEM	Model	3.3L-4C	
	Classification	Diesel	
	Cycle	4	
	Type	4 cylinder in-line OHV	
	Displacement	cm ³ 3331	
	Bore x Stroke	mm 94 x 120	
	Compression ratio	22	
	Air cleaner	Cyclone type, dry element	
	Governor	Mechanical type	
	Oil filter	Cartridge type	
	Oil pump	Gear type	
	Injection pump	VE type	
	Fuel pump		
	Water pump	Centrifuge type	
	Radiator	Corrugated fin	
	Battery	12V-64AH	
	Alternator	12V-50AH	
Starter motor	12V-2.2kW (Reduction type)		
TRANSMISSION	Automatic	Torque converter type	3-element, 1-stage, 2-phase
		Transmission type	Constant mesh, Power shift, One forward, One reverse speed. With neutral start switch. Wet multi-disc hydraulic clutch.
	Manual	Clutch type	Single, dry friction disc
		Transmission type	Full synchromesh, two speeds forward and reverse
STEERING SYSTEM	Type	Fully hydrostatic power steering	
	Steering unit	ORBITROL	
	Power cylinder	Mounted on steering axle	
	Steering wheel	Tilting type	
DRIVE AXLE	Type	Propeller shaft type	
	Final gear	Hypoid gear	
STEERING AXLE	Type	Center pin system	
	Suspension system	Rubber bushing mounted	
BRAKE SYSTEM	Service brake	Hydraulic, Duo-servo with auto-adjuster. Operates on drive wheels	
	Parking brake	Dead point rock type, Mechanically operates on drive wheels	
FRAME & BODY	Frame structure	Integral, All welded frame	
	Overhead guard	Strength conforms to ISO, ANSI standards	
	Fuel tank	2.0-2.5ton:63 liters 3.0-3.5ton:69 liters	
	Hydraulic oil tank	2ton:45 liters 3ton: 50 liters Upper limit on level gauge	
HYDRAULIC SYSTEM	Hydraulic oil pump	Gear type, used for hoisting and power steering	
	Control valve	Sectional type with tilt lock valve	
	Lift cylinder	With flow regulator valve	
	Oil filter	150 mesh suction filter, 20 micron filter on the return circuit	
LOADING SYSTEM	Mast	All roller mast, Grease sealed roller bearing	
	Carriage	2.0-2.5ton: Class II 3.0-3.5ton: Class III	
	Forks	Forged alloy steel, Hook type, Conforms to ITA standards	
INSTRUMENTS	Gauge & meter	Torque converter fluid temperature warning lamp (A/T model) / Fuel gauge / Water temperature gauge / Hour meter	
	Light	Battery charge warning lamp / Engine oil pressure warning light/Glow plug pilot lamp (Diesel only) / PKB warning lamp / Seat belt warning lamp / Neutral position lamp / AT interlock operating lamp / LPG low fuel warning lamp / Mast interlock operating lamp	
	Switch & knob	Lighting switch / Starter switch / Engine control knob (Diesel cold spec. only)	