

# L01 U-model

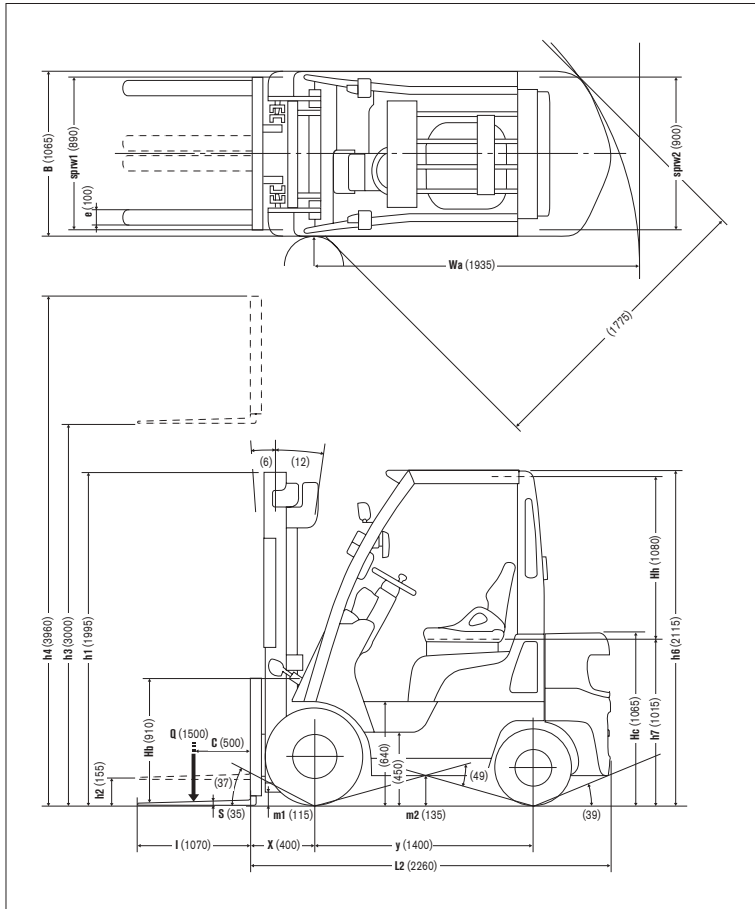
**LX** SERIES

**1.5**

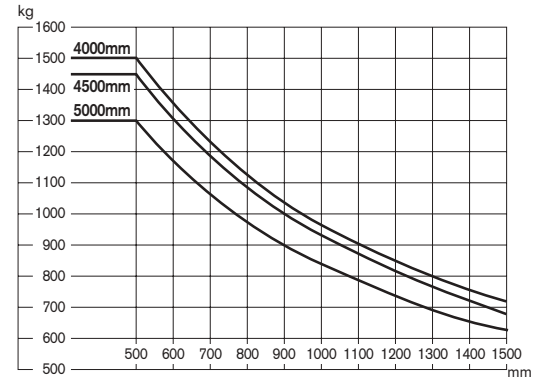
**1.75 ton**  
at 500mm  
Load Center

# L01-U

## Dimensions



## Load Capacity Chart



No capacity reduction until 4000 mm height. Load capacities are computed with following conditions, a) Standard 2W Mast and b) Mast in vertical position.

## Tire and Tread Specifications

Front Tire	Single	Double
Front Tire Size	6.50-10-10PR( )	6.50-10-10PR( )
Overall Width mm	1065	1480
Front Tread mm	890	1095

## Ground Clearance

Under mast	mm	115
Under power unit	mm	135
Under frame	mm	150

## Mast Specifications & Rated Capacities

L01A15JU, L01M15JU, L01A15DU, L01M15DU, L01A15U, L01M15U, L01A15WU, L01M15WU, PL01A15JU, PL01A15DU, PL01A15U, PL01A15WU, FL01A15U, FL01M15U

Mast type	Mast name	Max. fork Height mm	Overall height			Free lift		Front overhang mm	Tilt angle Forward/ Backward deg	Capacity Single tire Load center 500 mm kg
			Fully lowered mm	Fully extended		Without backrest mm	With STD backrest mm			
				Without backrest mm	With STD backrest mm					
Two stage (Wide view 2W)	2W 300	3000	1995	3580	3945	155	155	400	6/12	1500
	2W 330	3300	2145	3880	4245				6/12	1500
	2W 350	3500	2280	4080	4445				6/12	1500
	2W 370	3700	2405	4280	4645				6/12	1500
	2W 400	4000	2595	4580	4945				6/12	1500
	2W 450	4500	2845	5080	5445				6/6	1450
	2W 500	5000	3095	5580	5945				6/6	1300
Two stage (Full free 2F)	2F 300	3000	1995	3580	3945	1450	1085	400	6/10	1500
	2F 330	3300	2145	3880	4245	1600	1235		6/10	1500
	2F 350	3500	2280	4080	4445	1735	1370		6/10	1500
	2F 370	3700	2405	4280	4645	1860	1495		6/10	1500
	2F 400	4000	2595	4580	4945	2050	1685		6/10	1500
Three stage (Full free 3F)	3F 385	3850	1845	4430	4795	1300	935	400	6/6	1500
	3F 430	4300	1995	4880	5245	1450	1085		6/6	1400
	3F 475	4750	2145	5330	5695	1600	1235		6/6	1350
	3F 515	5150	2280	5730	6095	1735	1370		6/6	1300
	3F 550	5500	2405	6080	6445	1860	1495		6/6	1200
	3F 600	6000	2595	6580	6945	2050	1685		6/6	700
	*3F 650	6500	2845	7080	7445	2300	1935		6/6	*-
	*3F 700	7000	3095	7580	7945	2550	2185		6/6	*-

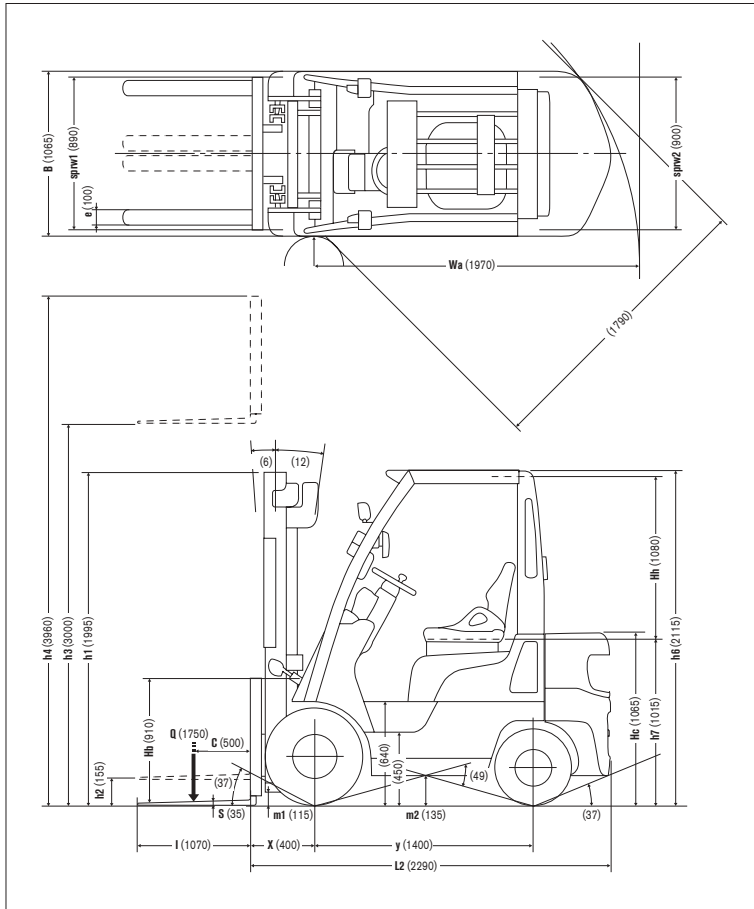
\* Double tire only. Capacity...3F650:750kg, 3F700:650kg

## Main Truck Specifications

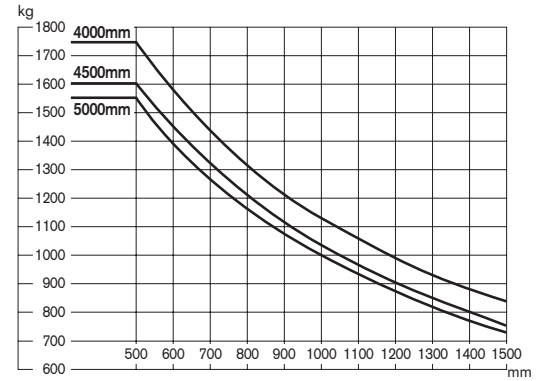
				L01A15JU/DU (L01M15JU/DU)	L01A15U/WU (L01M15U/WU)	PL01A15JU/DU	PL01A15U/WU	FL01A15U (FL01M15U)			
SPECIFICATIONS	1	Manufacturer		NISSAN	NISSAN	NISSAN	NISSAN	NISSAN		1	
	2	Model		L01A15JU/DU (L01M15JU/DU)	L01A15U/WU (L01M15U/WU)	PL01A15JU/DU	PL01A15U/WU	FL01A15U (FL01M15U)		2	
	3	Load capacity	Q load lifted	kg	1500	1500	1500	1500	1500		3
	4	Load center	C distance	mm	500	500	500	500	500		4
	5	Power unit	battery, diesel, gasoline, LP gas		Gasoline/Gasoline·LPG	Gasoline/Gasoline·LPG	Gasoline/Gasoline·LPG	Gasoline/Gasoline·LPG	Diesel		5
	6	Operator type	walkie, rider / stand, rider / seat		Rider/seat	Rider/seat	Rider/seat	Rider/seat	Rider/seat		6
	7	Tire type	front / rear		PNE / PNE	PNE / PNE	PNE / PNE	PNE / PNE	PNE / PNE		7
	8	Wheels(x=driven)	number front / rear		2X / 2	2X / 2	2X / 2	2X / 2	2X / 2		8
DIMENSIONS	9	Maximum fork height	h3 standard lift height	mm	3000	3000	3000	3000	3000		9
	10	Free lift	h2 standard free lift	mm	155	155	155	155	155		10
	13	Fork size	s.e.l	mm	35 x 100 x 1070	35 x 100 x 1070	35 x 100 x 1070	35 x 100 x 1070	35 x 100 x 1070		13
		Max. Fork Spread		mm	900	900	900	900	900		
		Min. Fork Spread		mm	205	205	205	205	205		
	14	Tilt range	/ mast forward / backward	deg	6 / 12	6 / 12	6 / 12	6 / 12	6 / 12		14
	15	Overall measurement	L2 length to fork face	mm	2260	2260	2260	2260	2260		15
	16		B overall width	mm	1065	1065	1065	1065	1065		16
	17		h1 height mast retracted	mm	1995	1995	1995	1995	1995		17
	18		h4 height mast extended	mm	3960	3960	3960	3960	3960		18
	19		h6 height overhead guard	mm	2115	2115	2115	2115	2115		19
	20		h7 height of driver's seat	mm	1015	1015	1015	1015	1015		20
	21		Turning radius (outside)	Wa	mm	1935	1935	1935	1935	1935	
22	Load distance	X from center of front axle	mm	400	400	400	400	400		22	
23	Right angle stacking aisle	Ast pallets (LxW) 1200x800/1000x1200	mm	3735/3535	3735/3535	3735/3535	3735/3535	3735/3535		23	
PERFORMANCE	24	Speeds	travelling	full load	km/h	19.0	19.0	19.0	19.0	19.0	24
	no load			km/h	19.0	19.0	19.0	19.0	19.0	19.0	
	lifting		full load	mm/s	600	550	620	580	670	25	
			no load	mm/s	630	630	650	650	710		
	lowering		full load	mm/s	500	500	500	500	500	26	
			no load	mm/s	500	500	500	500	500		
28	Max. drawbar pull	full load / no load 5min.	N	13250 / 10600 (11250 / 10600)	12250 / 10600 (10800 / 10600)	16450 / 11000	15200 / 11000	15700 / 11000 (15700 / 11000)		28	
29	Gradeability at 2km/h	full load / no load	tan %	31 / -	29 / -	42 / -	40 / -	40 / -		29	
30	Max. gradeability	full load / no load	tan %	38 / 28	35 / 28	52 / 28	46 / 28	45 / 28		30	
WEIGHTS	32	Truck weight	no load	kg	2660	2660	2660	2660	2690		32
	33	Weight distribution	full load	front / rear	kg	3600 / 560	3600 / 560	3600 / 560	3600 / 560	3615 / 575	33
	34		no load	front / rear	kg	1130 / 1530	1130 / 1530	1130 / 1530	1130 / 1530	1150 / 1540	34
CHASSIS & WHEELS	35	Tires	number	front / rear	each	2 / 2	2 / 2	2 / 2	2 / 2	2 / 2	35
	36		size-front			6.50-10-10PR( )	6.50-10-10PR( )	6.50-10-10PR( )	6.50-10-10PR( )	6.50-10-10PR( )	36
	37		size-rear			5.00-8-8-PR( )	5.00-8-8-PR( )	5.00-8-8-PR( )	5.00-8-8-PR( )	5.00-8-8-PR( )	37
	38	Wheelbase	y	mm	1400	1400	1400	1400	1400		38
	39	Tread	sprw 1 / sprw 2 front / rear	mm	890 / 900	890 / 900	890 / 900	890 / 900	890 / 900		39
		Backrest height	Hb top of backrest ~ upper of fork face	mm	910	910	910	910	910		
		Overhead guard clearance	Hh	mm	1080	1080	1080	1080	1080		
		Counterweight height	Hc	mm	1065	1065	1065	1065	1065		
	40	Ground clearance	m1 full load minimum	mm	115	115	115	115	115		40
	41		m2 full load center of wheelbase	mm	135	135	135	135	135		41
	42	Service brake	mechanical / hydraulic / electric / pneu		hydraulic	hydraulic	hydraulic	hydraulic	hydraulic		42
43	Parking brake	foot / hand / seat switch		hand	hand	hand	hand	hand		43	
DRIVE LINE	45	Battery	voltage / capacity (5 hour)	V/AH	12 / 27	12 / 27	12 / 27	12 / 27	12 / 60		45
	49	Internal Combustion engine	manufacturer / type		NISSAN / K15	NISSAN / K15	NISSAN / K21	NISSAN / K21	MHI / 2.5L-4C		49
	50		maximum engine rated power	kW/rpm	31 / 2800	26 / 2450	42 / 2700	34 / 2200	36 / 2500		50
	51		maximum engine rated torque	Nm/rpm	113 / 2400	109 / 2000	160 / 2000	158 / 1600	149 / 2000		51
52	number of cylinders / displacement		/ cc	4 / 1486	4 / 1486	4 / 2065	4 / 2065	4 / 2505		52	
55	Transmission	type		Automatic (Manual)	Automatic (Manual)	Automatic	Automatic	Automatic (Manual)		55	
57		speed		1 / 1 (2 / 2)	1 / 1 (2 / 2)	1 / 1	1 / 1	1 / 1 (2 / 2)			
57	Operating pressure	for attachment	MPa	12.7	12.7	12.7	12.7	12.7		57	

# L01-U

## Dimensions



## Load Capacity Chart



No capacity reduction until 4000 mm height. Load capacities are computed with following conditions, a) Standard 2W Mast and b) Mast in vertical position.

## Tire and Tread Specifications

Front Tire	Single	Double
Front Tire Size	6.50-10-10PR( )	6.50-10-10PR( )
Overall Width mm	1065	1480
Front Tread mm	890	1095

## Ground Clearance

Under mast	mm	115
Under power unit	mm	135
Under frame	mm	150

## Mast Specifications & Rated Capacities

L01A18JU, L01A18DU, L01A18U, L01A18WU, PL01A18JU, PL01A18DU, PL01A18U, PL01A18WU, FL01A18U

Mast type	Mast name	Max. fork Height mm	Overall height		Free lift		Front overhang mm	Tilt angle Forward/ Backward deg	Capacity Single tire Load center 500 mm kg	
			Fully lowered mm	Fully extended Without backrest mm	With STD backrest mm	Without backrest mm				With STD backrest mm
Two stage (Wide view 2W)	2W 300	3000	1995	3625	3945	155	155	400	6/12	1750
	2W 330	3300	2145	3925	4245				6/12	1750
	2W 350	3500	2280	4125	4445				6/12	1750
	2W 370	3700	2405	4325	4645				6/12	1750
	2W 400	4000	2595	4625	4945				6/12	1750
	2W 450	4500	2845	5125	5445				6/6	1600
	2W 500	5000	3095	5625	5945				6/6	1550
Two stage (Full free 2F)	2F 300	3000	1995	3660	3945	1370	1085	400	6/10	1750
	2F 330	3300	2145	3960	4245	1520	1235		6/10	1750
	2F 350	3500	2280	4160	4445	1655	1370		6/10	1750
	2F 370	3700	2405	4360	4645	1780	1495		6/10	1750
	2F 400	4000	2595	4660	4945	1970	1685		6/10	1750
	3F 385	3850	1845	4510	4795	1220	935		400	6/6
3F 430	4300	1995	4960	5245	1370	1085	6/6	1600		
3F 475	4750	2145	5410	5695	1520	1235	6/6	1500		
3F 515	5150	2280	5810	6095	1655	1370	6/6	1350		
3F 550	5500	2405	6160	6445	1780	1495	6/6	1250		
3F 600	6000	2595	6660	6945	1970	1685	6/6	750		
*3F 650	6500	2845	7160	7445	2220	1935	6/6	*-		
*3F 700	7000	3095	7660	7945	2470	2185	6/6	*-		

\* Double tire only. Capacity...3F650:800kg, 3F700:700kg

## Main Truck Specifications

Item				L01A18JU/DU	L01A18U/WU	PL01A18JU/DU	PL01A18U/WU	FL01A18U			
SPECIFICATIONS	1	Manufacturer		NISSAN	NISSAN	NISSAN	NISSAN	NISSAN	1		
	2	Model		L01A18JU/DU	L01A18U/WU	PL01A18JU/DU	PL01A18U/WU	FL01A18U	2		
	3	Load capacity	Q load lifted	kg	1750	1750	1750	1750	1750	3	
	4	Load center	C distance	mm	500	500	500	500	500	4	
	5	Power unit	battery, diesel, gasoline, LP gas		Gasoline/Gasoline·LPG	Gasoline/Gasoline·LPG	Gasoline/Gasoline·LPG	Gasoline/Gasoline·LPG	Diesel	5	
	6	Operator type	walkie, rider / stand, rider / seat		Rider/seat	Rider/seat	Rider/seat	Rider/seat	Rider/seat	6	
	7	Tire type	front / rear		PNE / PNE	PNE / PNE	PNE / PNE	PNE / PNE	PNE / PNE	7	
	8	Wheels(x=driven)	number front / rear		2X / 2	2X / 2	2X / 2	2X / 2	2X / 2	8	
DIMENSIONS	9	Maximum fork height	h3 standard lift height	mm	3000	3000	3000	3000	3000	9	
	10	Free lift	h2 standard free lift	mm	155	155	155	155	155	10	
	13	Fork size	s.e.l	mm	35 x 100 x 1070	35 x 100 x 1070	35 x 100 x 1070	35 x 100 x 1070	35 x 100 x 1070	13	
		Max. Fork Spread		mm	900	900	900	900	900		
		Min. Fork Spread		mm	205	205	205	205	205		
	14	Tilt range	/ mast forward / backward	deg	6 / 12	6 / 12	6 / 12	6 / 12	6 / 12	14	
	15	Overall measurement	L2 length to fork face	mm	2290	2290	2290	2290	2290	15	
	16		B overall width	mm	1065	1065	1065	1065	1065	16	
	17		h1 height mast retracted	mm	1995	1995	1995	1995	1995	17	
	18		h4 height mast extended	mm	3960	3960	3960	3960	3960	18	
	19		h6 height overhead guard	mm	2115	2115	2115	2115	2115	19	
	20		h7 height of driver's seat	mm	1015	1015	1015	1015	1015	20	
	21		Turning radius (outside)	Wa	mm	1970	1970	1970	1970	1970	21
22	Load distance	X from center of front axle	mm	400	400	400	400	400	22		
23	Right angle stacking aisle	Ast pallets (LxW) 1200x800/1000x1200	mm	3770/3570	3770/3570	3770/3570	3770/3570	3770/3570	23		
PERFORMANCE	24	Speeds	travelling	full load	km/h	19.0	19.0	19.0	19.0	19.0	24
	no load			km/h	19.0	19.0	19.0	19.0	19.0		
	lifting		full load	mm/s	600	550	620	580	670	25	
			no load	mm/s	630	630	650	650	710		
	lowering		full load	mm/s	500	500	500	500	500	26	
			no load	mm/s	500	500	500	500	500		
28	Max. drawbar pull	full load / no load 5min.	N	13250 / 11250	12250 / 11250	16450 / 11750	15200 / 11750	15700 / 11800	28		
29	Gradeability at 2km/h	full load / no load	tan %	27 / -	26 / -	38 / -	35 / -	35 / -	29		
30	Max. gradeability	full load / no load	tan %	33 / 24	31 / 24	45 / 24	41 / 24	40 / 24	30		
WEIGHTS	32	Truck weight	no load	kg	2825	2825	2825	2825	2855	32	
	33	Weight distribution	full load	front / rear	kg	3965 / 610	3965 / 610	3965 / 610	3965 / 610	3980 / 625	33
	34		no load	front / rear	kg	1085 / 1740	1085 / 1740	1085 / 1740	1085 / 1740	1105 / 1750	34
	35		number	front / rear	each	2 / 2	2 / 2	2 / 2	2 / 2	35	
CHASSIS & WHEELS	36	Tires	size-front		6.50-10-10PR( )	6.50-10-10PR( )	6.50-10-10PR( )	6.50-10-10PR( )	6.50-10-10PR( )	36	
	37		size-rear		5.00-8-8-PR( )	5.00-8-8-PR( )	5.00-8-8-PR( )	5.00-8-8-PR( )	5.00-8-8-PR( )	37	
	38		Wheelbase	y	mm	1400	1400	1400	1400	1400	38
39	Tread	sprw 1 / sprw 2	front / rear	mm	890 / 900	890 / 900	890 / 900	890 / 900	890 / 900	39	
	Backrest height	Hb top of backrest ~ upper of fork face	mm	910	910	910	910	910			
	Overhead guard clearance	Hh	mm	1080	1080	1080	1080	1080			
	Counterweight height	Hc	mm	1065	1065	1065	1065	1065			
40	Ground clearance	m1 full load minimum	mm	115	115	115	115	115	40		
41		m2 full load center of wheelbase	mm	135	135	135	135	135	41		
42	Service brake	mechanical / hydraulic / electric / pneu		hydraulic	hydraulic	hydraulic	hydraulic	hydraulic	42		
43	Parking brake	foot / hand / seat switch		hand	hand	hand	hand	hand	43		
DRIVE LINE	45	Battery	voltage / capacity (5 hour)	V/AH	12 / 27	12 / 27	12 / 27	12 / 27	12 / 60	45	
	49	Internal Combustion engine	manufacturer / type		NISSAN / K15	NISSAN / K15	NISSAN / K21	NISSAN / K21	MHI / 2.5L-4C	49	
	50		maximum engine rated power	kW/rpm	31 / 2800	26 / 2450	42 / 2700	34 / 2200	36 / 2500	50	
	51		maximum engine rated torque	Nm/rpm	113 / 2400	109 / 2000	160 / 2000	158 / 1600	149 / 2000	51	
	52		number of cylinders / displacement	/ cc	4 / 1486	4 / 1486	4 / 2065	4 / 2065	4 / 2505	52	
55	Transmission	type		Automatic	Automatic	Automatic	Automatic	Automatic	55		
		speed		1 / 1	1 / 1	1 / 1	1 / 1	1 / 1			
57	Operating pressure	for attachment	MPa	12.7	12.7	12.7	12.7	12.7	57		

# L01-U

## Loading Capacity

L01A15JU, L01M15JU, L01A15DU, L01M15DU, L01A15U, L01M15U, L01A15WU, L01M15WU,  
 PL01A15JU, PL01A15DU, PL01A15U, PL01A15WU, FL01A15U, FL01M15U

Unit: kg

Load center		500mm	600	700	800	900	1000	1100	1200	1300	1400	1500													
Mast name	Single tire																								
	2W300	2W330	2W350	2W370	2W400	2W450	2W500	2F300	2F330	2F350	2F370	2F400	3F385	3F430	3F475	3F515	3F550	3F600							
	2W300	1500	1350	1225	1125	1040	965	900	845	795	750	710		2W300	1500	1350	1225	1125	1040	965	900	845	795	750	710
	2W330	1500	1350	1225	1125	1040	965	900	845	795	750	710		2W330	1500	1350	1225	1125	1040	965	900	845	795	750	710
	2W350	1500	1350	1225	1125	1040	965	900	845	795	750	710		2W350	1500	1350	1225	1125	1040	965	900	845	795	750	710
	2W370	1500	1350	1225	1125	1040	965	900	845	795	750	710		2W370	1500	1350	1225	1125	1040	965	900	845	795	750	710
	2W400	1500	1350	1225	1125	1040	965	900	845	795	750	710		2W400	1500	1350	1225	1125	1040	965	900	845	795	750	710
	2W450	1450	1305	1185	1090	1005	930	870	815	770	725	685		2W450	1450	1305	1185	1090	1005	930	870	815	770	725	685
	2W500	1300	1170	1065	975	900	835	780	730	690	650	615		2W500	1400	1260	1145	1050	970	900	840	790	740	700	665
	2F300	1500	1350	1225	1125	1040	965	900	845	795	750	710		2F300	1500	1350	1225	1125	1040	965	900	845	795	750	710
	2F330	1500	1350	1225	1125	1040	965	900	845	795	750	710		2F330	1500	1350	1225	1125	1040	965	900	845	795	750	710
	2F350	1500	1350	1225	1125	1040	965	900	845	795	750	710		2F350	1500	1350	1225	1125	1040	965	900	845	795	750	710
	2F370	1500	1350	1225	1125	1040	965	900	845	795	750	710		2F370	1500	1350	1225	1125	1040	965	900	845	795	750	710
	2F400	1500	1350	1225	1125	1040	965	900	845	795	750	710		2F400	1500	1350	1225	1125	1040	965	900	845	795	750	710
	3F385	1500	1350	1225	1125	1040	965	900	845	795	750	710		3F385	1500	1350	1225	1125	1040	965	900	845	795	750	710
	3F430	1400	1260	1145	1050	970	900	840	785	740	700	665		3F430	1400	1260	1145	1050	970	900	840	785	740	700	665
	3F475	1350	1215	1105	1010	935	870	810	760	715	675	640		3F475	1350	1215	1105	1010	935	870	810	760	715	675	640
	3F515	1300	1170	1065	975	900	835	780	730	690	650	615		3F515	1300	1170	1065	975	900	835	780	730	690	650	615
	3F550	1200	1080	980	900	830	770	720	675	635	600	570		3F550	1250	1125	1020	935	865	805	750	705	660	625	590
	3F600	700	630	570	525	485	450	420	395	370	350	330		3F600	1050	945	860	785	725	675	630	590	555	525	495
														3F650	750	675	615	560	520	480	450	420	395	375	355
														3F700	650	585	530	485	450	420	390	365	345	325	310

**L01A18JU, L01A18DU, L01A18U, L01A18WU, PL01A18JU, PL01A18DU, PL01A18U, PL01A18WU, FL01A18U**

Unit: kg

Load center		500mm	600	700	800	900	1000	1100	1200	1300	1400	1500	
Mast name													
Single tire	2W300	1750	1575	1430	1315	1210	1125	1050	985	925	875	830	
	2W330	1750	1575	1430	1315	1210	1125	1050	985	925	875	830	
	2W350	1750	1575	1430	1315	1210	1125	1050	985	925	875	830	
	2W370	1750	1575	1430	1315	1210	1125	1050	985	925	875	830	
	2W400	1750	1575	1430	1315	1210	1125	1050	985	925	875	830	
	2W450	1600	1440	1310	1200	1110	1030	960	900	845	800	760	
	2W500	1550	1395	1270	1165	1075	995	930	870	820	775	735	
	2F300	1750	1575	1430	1310	1210	1125	1050	985	925	875	830	
	2F330	1750	1575	1430	1310	1210	1125	1050	985	925	875	830	
	2F350	1750	1575	1430	1310	1210	1125	1050	985	925	875	830	
	2F370	1750	1575	1430	1310	1210	1125	1050	985	925	875	830	
	2F400	1750	1575	1430	1310	1210	1125	1050	985	925	875	830	
	3F385	1700	1530	1390	1275	1175	1095	1020	955	900	850	805	
	3F430	1600	1440	1310	1200	1110	1030	960	900	845	800	760	
	3F475	1500	1350	1225	1125	1040	965	900	845	795	750	710	
	3F515	1350	1215	1105	1010	935	870	810	760	715	675	640	
	3F550	1250	1125	1020	935	865	805	750	705	660	625	590	
	3F600	750	675	615	560	520	480	450	420	395	375	355	
	Double tire	2W300	1750	1575	1430	1315	1210	1125	1050	985	925	875	830
		2W330	1750	1575	1430	1315	1210	1125	1050	985	925	875	830
2W350		1750	1575	1430	1315	1210	1125	1050	985	925	875	830	
2W370		1750	1575	1430	1315	1210	1125	1050	985	925	875	830	
2W400		1750	1575	1430	1315	1210	1125	1050	985	925	875	830	
2W450		1600	1440	1310	1200	1110	1030	960	900	845	800	760	
2W500		1550	1395	1270	1165	1075	995	930	870	820	775	735	
2F300		1750	1575	1430	1310	1210	1125	1050	985	925	875	830	
2F330		1750	1575	1430	1310	1210	1125	1050	985	925	875	830	
2F350		1750	1575	1430	1310	1210	1125	1050	985	925	875	830	
2F370		1750	1575	1430	1310	1210	1125	1050	985	925	875	830	
2F400		1750	1575	1430	1310	1210	1125	1050	985	925	875	830	
3F385		1700	1530	1390	1275	1175	1095	1020	955	900	850	805	
3F430		1600	1440	1310	1200	1110	1030	960	900	845	800	760	
3F475		1500	1350	1225	1125	1040	965	900	845	795	750	710	
3F515		1450	1305	1185	1085	1005	930	870	815	770	725	685	
3F550		1350	1215	1105	1010	935	870	810	760	715	675	640	
3F600		1200	1080	980	900	830	770	720	675	635	600	570	
3F650		800	720	655	600	555	515	480	450	425	400	380	
3F700		700	630	570	525	485	450	420	395	370	350	330	

# L01-U

## Truck Weight

Unit:kg

Mast type	Mast name	(P)L01	FL01	(P) L01	FL01
		15	15	18	18
Two stage (Wide view 2W)	2W300	2660	2690	2825	2855
	2W330	2680	2710	2845	2875
	2W350	2695	2725	2860	2895
	2W370	2730	2760	2895	2930
	2W400	2755	2785	2920	2950
	2W450	2785	2820	2955	2985
	2W500	2820	2850	2985	3015
Two stage (Full free 2F)	2F300	2670	2705	2840	2870
	2F330	2695	2725	2860	2890
	2F350	2710	2745	2880	2910
	2F370	2750	2780	2915	2945
	2F400	2775	2805	2945	2975
Three stage (Full free 3F)	3F385	2825	2855	2995	3025
	3F430	2855	2885	3025	3055
	3F475	2880	2915	3050	3085
	3F515	2910	2940	3080	3110
	3F550	2960	2995	3130	3165
	3F600	3000	3030	3170	3200
	3F650	3150	3180	3320	3350
3F700	3200	3230	3370	3400	
Truck weight without mast		2150	2180	2315	2345

Add 100kg for double tire models.  
 Figures in are for double tire models.



## Additional Truck Weight

### TIRE WEIGHT

Unit:kg

		Model(Capacity code)	15-18
Front	Single	Pneumatic	±0
		Solid	+45
		Color Solid (White/Green)	+50
		AirBoss	+45
	Double	Pneumatic	±0
		Solid	+85
		Color Solid (White/Green)	+100
		AirBoss	+85
Rear	Single	Pneumatic	±0
		Solid	+20
		Color Solid (White/Green)	+25
		AirBoss	+20

### LPG SYSTEM

Unit:kg

		Type	15-18
Without Bottle, Bracket, Hose		LPGC	+5
Swing-back	Bottle+Bracket+Hose	LPGA	+35
	NO Bottle+Bracket+Hose	LPGB	+15
	NO Bottle+Bracket+NO Hose	LPGE	+15
Swing-open	Bottle+Bracket+Hose	LPGF	+40
	NO Bottle+Bracket+Hose	LPGG	+20
	NO Bottle+Bracket+NO Hose	LPGH	+20
Swing-down	Bottle+Bracket+Hose	LPGP	+40
	NO Bottle+Bracket+Hose	LPGQ	+20
	NO Bottle+Bracket+NO Hose	LPGR	+20

### FORKS

Unit:kg

		Model(Capacity code)	15-18
Fork length mm	Less fork		-80
	850		-10
	920		-10
	1000		-5
	1070		±0
	1150		+5
	1220		+10
	1370		+15
	1520		+20

### CABIN

Unit:kg

Model(Capacity code)	15-18
Windshield Glass	+20
Canvas Cabin	+20
Steel Cabin	+150
Heater	+10
Sub Guard	+15

### CARRIAGE & BACKREST

Unit:kg

CARRIAGE	BACKREST	15	18
Standard	Standard	±0	±0
	High	+10	+10
	Less	-20	-20
Wide View	Standard	+10	+10
	High	+20	+20
	Less	-10	-10
Wide	High	+40	+40
Heavy	Standard	+5	-
	High	+15	-
	Less	-15	-
Heavy	High	+45	-
	Wide	Less	+25

# L01-U

## Option Availability

		L01/PL01 15-18				FL01 15-18 Diesel
Item		ECCS Gasoline	ECCS Dual	Carburetor Gasoline	Carburetor Dual	
Engine	ECCS (Electronic Concentrated Control System) type			-	-	-
	Carburetor type	-	-			-
	Speed & Power / Eco Selector			-	-	-
Cooling system	Corrugated fin type radiator					
	Radiator screen					
	Oil cooler (Radiator built-in type) (A/T model)					
	30% density LLC (Non-amine)					
	50% density LLC (Non-amine)					
Intake system	Super air intake system					
	Cyclone air cleaner					
Exhaust system	Standard muffler	-	-			
	Overhead exhaust muffler					
	Three way catalytic muffler			-	-	-
	Diesel Particulate Filter (DPF)	-	-	-	-	
	Anti-fire spark muffler (cyclone)	-	-	-	-	
LPG system (Dual fuel) Swing-back Swing-open Swing-down	Complete system (with LPG bottle)	-		-		-
	Without LPG bottle*	-		-		-
	Without LPG bottle and hose with bottle bracket	-		-		-
	Without LPG bottle, hose and bottle bracket	-		-		-
Hydraulic control	2 spool valve					
	3 spool valve					
	4 spool valve					
	Single control lever					
	Double control lever					
	3 spool piping to carriage					
	4 spool piping to carriage					
	Quick release type piping connector					
Mast	2-stage outer chain wide view mast (2W)					
	2-stage full free mast (2F)					
	3-stage full free mast (3F)					
	Mast less					
	Mast protector					
	Tilt Cylinder Cover					
	Tilt Cylinder Boots					
	Tilt leveling system (2W mast only)					
Carriage & Backrest	Wide carriage					
	Extra wide carriage	-	-	-	-	-
	6-roller carriage**					
	ANSI type high backrest					
	Wide backrest					
	Extra wide backrest	-	-	-	-	-
Fork	Without backrest					
	Long fork***					
Steering system	Tilt steering					
	Hydrostatic power steering system					
	Steering knob					
	Steering synchronizer					

\* Swing-back type is standard.

\*\* This option is standard for 1.8 ton. When piping to carriage is chosen, this option is installed regardless of tonnage.

\*\*\* Refer to Fork availability.

## Option Availability

		L01/PL01 15-18				FL01 15-18 Diesel
Item		ECCS Gasoline	ECCS Dual	Carburetor Gasoline	Carburetor Dual	
Body	Power train floating					
	Rain guard (Vinyl type)					
	Rain guard (Resin type)					
	Canvas cabin					
	Damper stay for top panel opening					
	Top panel lock					
	Rearview mirrors					
Seat	Restraint seat with suspension					
	Seat less					
Meters & Gauge	Fuel gauge					
	Water temperature gauge					
	Hour meter (key on counting)					
Lights & Alarm	Glow plug lamp (Diesel model)	-	-	-	-	
	Headlights (no guard)					
	Back-up buzzer					
	Turn signal lamps					
	Rear combination lamps					
	Rear working light					
	Rotating light					
	Speedometer					
	Battery charge warning lamp					
	Water separator warning lamp (Diesel model)	-	-	-	-	
	Torque converter fluid temp. warning lamp (A/T model)					
	Air cleaner clogging warning lamp					
	Parking brake warning buzzer					
	Forward/Reverse interlock warning lamp (A/T model)					
	Seatbelt warning lamp					
	Clutch wearing warning lamp (M/T model)					
	Radiator fluid level warning lamp					
	Fuel filter warning lamp (Diesel model)	-	-	-	-	
	Mast interlock warning lamp					
LPG low fuel warning lamp	-		-		-	
3-stage lighting switch						
Brake	Toggle joint type parking brake with warning buzzer					
Tires & Rims	J-lug tire (Textile)					
	Pneumatic type solid tire					
	AirBoss tire					
	Double tire					
	Built-in bolt type disc wheels					
	Spare tires (1 for front and 1 for rear)					
Tool	Tool kit					
	Tool kit with jack					
Rust-proof specifications						
Label	English					
	German					
	French					
	Spanish					

# L01-U

## Fork Availability

Length mm		Model	...Standard	...Option
			L01	
			15	18
Fork	Without fork			
	850			
	920			
	1000			
	1070			
	1150			
	1220			
	1370			
Extension fork	1520			
	1200			
	1300			
	1500			

## Fork Dimensions

	Width [W] × Thickness [T] mm	
	L01 15	L01 18
850- 1150	100 × 35	100 × 35
1220- 1370	100 × 35	100 × 38
1520	100 × 38	100 × 38

## Carriage & Backrest Dimensions

Carriage		Unit:mm	
Model	L01 15	L01 18	
Class	Class		
Numbers of rollers (not include side rollers)	4	6	
Carriage width [W] mm	Standard	920	
	Wide	1335	
Max. fork spread mm	Standard	910	
	Wide	1325	

Backrest		Unit:mm	
Model	L01 15-18		
Backrest height [H] mm	Standard	910	
	High backrest	1220	
	Wide backrest	1220	
Outside width of backrest [L] mm	Standard & high backrest	945	
	Wide backrest	1360	
Plate thickness [T] mm	12		

## Tire Size

		Model	L01
Tire			15-18
Front	Single Type	Tire size (STD)	6.50-10-10PR(I)
		Rim size (STD)	5.00F x 10DT
		J-lug textile	
		Pneumatic type solid	6.50-10
	Double Type	AirBoss tire	6.50-10
		Tire size (STD)	6.50-10-10PR(I)
		Rim size (STD)	5.00F x 10DT
		J-lug textile	
	Single Type	Pneumatic type solid	6.50-10
		AirBoss tire	6.50-10
Tire size (STD)		5.00-8-8PR(I)	
Rim size (STD)		3.00D x 8DT	
Rear	Single Type	J-lug textile	
		Pneumatic type solid	5.00-8
		AirBoss tire	5.00-8

# L01-U

## TOOL OPTIONS

			L01
Tool kit	Wrench	8 x 10	O
		10 x 12	
		12 x 14	O
		14 x 17	O
		13 x 17	
	Screwdrivers		O
	Wheel nut wrench		O
	Puller		O*
	Tool bag		O
Jack			O**

\* Model with double tire

\*\* Jack is available by separate request.

## Unit Specification

		L01-U				
ENGINE SYSTEM	Model		K15			
	Classification		ECCS Gasoline	ECCS Dual Gasoline / LPG	Carburetor Gasoline	Carburetor Gasoline/LPG
	Cycle		4			
	Type		4 cylinder in-line OHV			
	Displacement		cm <sup>3</sup>	1486		
	Bore x Stroke		mm	75.5 x 83.0		
	Compression ratio		9			
	Air cleaner		Cyclone type, dry element			
	Governor		Pneumatic type (Specified speed range control)			
	Oil filter		Cartridge type			
	Oil pump		Gear type			
	Injection pump		Electronic fuel injection type (GAS:MPI / LPG:SPI)			
	Fuel pump		Diaphragm type			
	Water pump		Centrifuge type			
	Radiator		Corrugated fin			
	Battery		12V-27AH			
Alternator		12V-50AH				
Starter motor		12V-1.2 kW (Reduction type)				
TRANSMISSION	Automatic	Torque converter type	3-element, 1-stage, 2-phase			
		Transmission type	Constant mesh, Power shift, One forward, One reverse speed. With neutral start switch. Wet multi-disc hydraulic clutch.			
	Manual	Clutch type	Single, dry friction disc			
		Transmission type	Full synchromesh, two speeds forward and reverse			
STEERING SYSTEM	Type		Fully hydrostatic power steering			
	Steering unit		ORBITROL			
	Power cylinder		Mounted on steering axle			
	Steering wheel		Tilting type			
DRIVE AXLE	Type		Propeller shaft type			
	Final gear		Spiral Bevel			
STEERING AXLE	Type		Center pin system			
	Suspension system		Rubber bushing mounted			
BRAKE SYSTEM	Service brake		Hydraulic, Duo-servo with auto-adjuster. Operates on drive wheels			
	Parking brake		Dead point rock type, Mechanically operates on drive wheels			
FRAME & BODY	Frame structure		Integral, All welded frame			
	Overhead guard		Strength conforms to ISO, ANSI standards			
	Fuel tank		45 liters			
	Hydraulic oil tank		30 liters Upper limit on level gauge			
HYDRAULIC SYSTEM	Hydraulic oil pump		Gear type, used for hoisting and power steering			
	Control valve		Sectional type with tilt lock valve			
	Lift cylinder		With flow regulator valve			
	Oil filter		150 mesh suction filter, 20 micron filter on the return circuit			
LOADING SYSTEM	Mast		All roller mast, Grease sealed roller bearing			
	Carriage		Class II			
	Forks		Forged alloy steel, Hook type, Conforms to ITA standards			
INSTRUMENTS	Gauge & meter		Torque converter fluid temperature warning lamp (A/T model)/Fuel gauge/ Water temperature gauge/Hour meter			
	Light		Battery charge warning lamp / Engine oil pressure warning light / Glow plug pilot lamp (Diesel only) / PKB warning lamp / Seat belt warning lamp / Neutral position lamp / AT interlock operating lamp / LPG gas warning lamp / Mast interlock operating lamp			
	Switch & knob		Lighting switch / Starter switch			

# L01-U

		PL01-U				
ENGINE SYSTEM	Model		K21			
	Classification		ECCS Gasoline	ECCS Dual Gasoline / LPG	Carburetor Gasoline	Carburetor Gasoline/LPG
	Cycle		4			
	Type		4 cylinder in-line OHV			
	Displacement cm <sup>3</sup>		2065			
	Bore x Stroke mm		89 x 83			
	Compression ratio		8.7			
	Air cleaner		Cyclone type, dry element			
	Governor		Pneumatic type (Specified speed range control)			
	Oil filter		Cartridge type			
	Oil pump		Gear type			
	Injection pump		Electronic fuel injection type (GAS:MPI / LPG:SPI)			
	Fuel pump		Diaphragm type			
	Water pump		Centrifuge type			
	Radiator		Corrugated fin			
	Battery		12V-27AH			
	Alternator		12V-50AH			
Starter motor		12V-1.2 kW (Reduction type)				
TRANSMISSION	Automatic	Torque converter type	3-element, 1-stage, 2-phase			
		Transmission type	Constant mesh, Power shift, One forward, One reverse speed. With neutral start switch. Wet multi-disc hydraulic clutch.			
	Manual	Clutch type	Single, dry friction disc			
		Transmission type	Full synchromesh, two speeds forward and reverse			
STEERING SYSTEM	Type		Fully hydrostatic power steering			
	Steering unit		ORBITROL			
	Power cylinder		Mounted on steering axle			
	Steering wheel		Tilting type			
DRIVE AXLE	Type		Propeller shaft type			
	Final gear		Spiral Bevel			
STEERING AXLE	Type		Center pin system			
	Suspension system		Rubber bushing mounted			
BRAKE SYSTEM	Service brake		Hydraulic, Duo-servo with auto-adjuster. Operates on drive wheels			
	Parking brake		Dead point rock type, Mechanically operates on drive wheels			
FRAME & BODY	Frame structure		Integral, All welded frame			
	Overhead guard		Strength conforms to ISO, ANSI standards			
	Fuel tank		45 liters			
	Hydraulic oil tank		30 liters Upper limit on level gauge			
HYDRAULIC SYSTEM	Hydraulic oil pump		Gear type, used for hoisting and power steering			
	Control valve		Sectional type with tilt lock valve			
	Lift cylinder		With flow regulator valve			
	Oil filter		150 mesh suction filter, 20 micron filter on the return circuit			
LOADING SYSTEM	Mast		All roller mast, Grease sealed roller bearing			
	Carriage		Class II			
	Forks		Forged alloy steel, Hook type, Conforms to ITA standards			
INSTRUMENTS	Gauge & meter		Torque converter fluid temperature warning lamp (A/T model)/Fuel gauge/ Water temperature gauge/Hour meter			
	Light		Battery charge warning lamp / Engine oil pressure warning light / Glow plug pilot lamp (Diesel only) / PKB warning lamp / Seat belt warning lamp / Neutral position lamp / AT interlock operating lamp / LPG low fuel warning lamp / Mast interlock operating lamp			
	Switch & knob		Lighting switch / Starter switch			



		FL01-U	
ENGINE SYSTEM	Model	2.5L-4C	
	Classification	Diesel	
	Cycle	4	
	Type	4 cylinder in-line OHV	
	Displacement	cm <sup>3</sup> 2505	
	Bore x Stroke	mm 88 x 103	
	Compression ratio	22	
	Air cleaner	Cyclone type, dry element	
	Governor	Mechanical type	
	Oil filter	Cartridge type	
	Oil pump	Gear type	
	Injection pump	VE type	
	Fuel pump		
	Water pump	Centrifuge type	
	Radiator	Corrugated fin	
	Battery	12V-60AH	
Alternator	12V-50AH		
Starter motor	12V-2kW (Reduction type)		
TRANSMISSION	Automatic	Torque converter type	3-element, 1-stage, 2-phase
		Transmission type	Constant mesh, Power shift, One forward, One reverse speed. With neutral start switch. Wet multi-disc hydraulic clutch.
	Manual	Clutch type	Single, dry friction disc
		Transmission type	Full synchromesh, two speeds forward and reverse
STEERING SYSTEM	Type	Fully hydrostatic power steering	
	Steering unit	ORBITROL	
	Power cylinder	Mounted on steering axle	
	Steering wheel	Tilting type	
DRIVE AXLE	Type	Propeller shaft type	
	Final gear	Spiral Bevel	
STEERING AXLE	Type	Center pin system	
	Suspension system	Rubber bushing mounted	
BRAKE SYSTEM	Service brake	Hydraulic, Duo-servo with auto-adjuster. Operates on drive wheels	
	Parking brake	Dead point rock type, Mechanically operates on drive wheels	
FRAME & BODY	Frame structure	Integral, All welded frame	
	Overhead guard	Strength conforms to ISO, ANSI standards	
	Fuel tank	45 liters	
	Hydraulic oil tank	30 liters Upper limit on level gauge	
HYDRAULIC SYSTEM	Hydraulic oil pump	Gear type, used for hoisting and power steering	
	Control valve	Sectional type with tilt lock valve	
	Lift cylinder	With flow regulator valve	
	Oil filter	150 mesh suction filter, 20 micron filter on the return circuit	
LOADING SYSTEM	Mast	All roller mast, Grease sealed roller bearing	
	Carriage	Class II	
	Forks	Forged alloy steel, Hook type, Conforms to ITA standards	
INSTRUMENTS	Gauge & meter	Torque converter fluid temperature warning lamp (A/T model)/Fuel gauge/ Water temperature gauge/Hour meter	
	Light	Battery charge warning lamp / Engine oil pressure warning light / Glow plug pilot lamp (Diesel only) / PKB warning lamp / Seat belt warning lamp / Neutral position lamp / AT interlock operating lamp / LPG low fuel warning lamp / Mast interlock operating lamp	
	Switch & knob	Lighting switch / Starter switch/Engine control knob (Diesel cold spec. only)	