

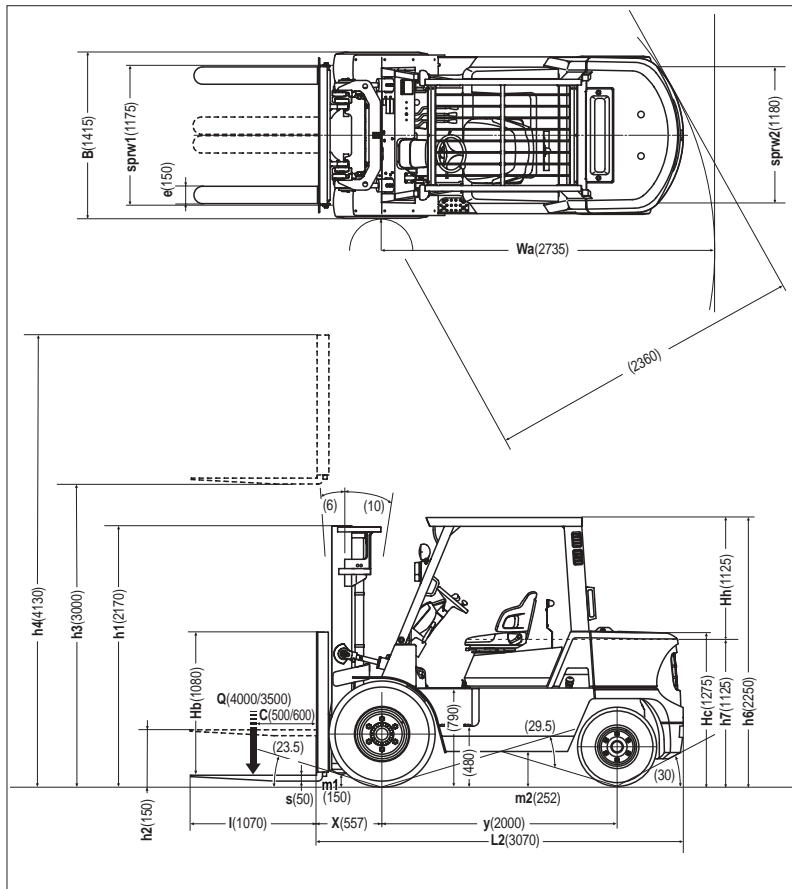
F04 U-model

4.0 ton
at 500mm
at 600mm
Load Center

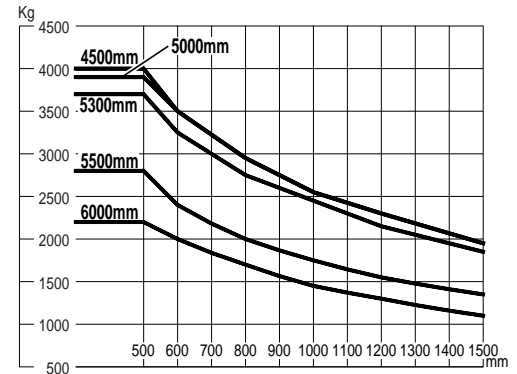
5.0 ton
at 600mm
Load Center

F04-U

Dimensions



Load Capacity Chart



No capacity reduction until 4500 mm height. Load capacities are computed with following conditions, a) Standard 2W Mast and b) Mast in vertical position.

Tire and Tread specifications

Front Tire	single	double	special double
Front Tire Size	8.25-15-14PR()	7.50-16-12PR()	8.25-15-12PR()
Overall Width mm	1415	1780	1965
Front Tread mm	1175	1310	1445

Ground Clearance

Under mast	mm	150
Under frame	mm	252

Mast Specifications & Rated Capacities

F04D40UT,F04D40UD,F04B40UT

Mast type	Mast name	Max. fork Height mm	Overall height		Free lift		Front overhang mm	Tilt angle Forward/ Backward deg	Capacity		
			Fully lowered mm	Fully extended *Without backrest mm	With STD backrest mm	*Without backrest mm			With STD backrest mm	Single tire Load center 500/600mm Kg	Double tire Load center 500/600mm Kg
Two stage (Wide view 2W)	2W300	3000	2170	3930	4130	150	150	557	6 / 10	4000 / 3500	4000 / 3500
	2W330	3300	2320	4230	4430	150	150		6 / 10	4000 / 3500	4000 / 3500
	2W350	3500	2420	4430	4630	150	150		6 / 10	4000 / 3500	4000 / 3500
	2W370	3700	2520	4630	4830	150	150		6 / 10	4000 / 3500	4000 / 3500
	2W400	4000	2700	4930	5130	150	150		6 / 10	4000 / 3500	4000 / 3500
	2W450	4500	3000	5430	5630	150	150		6 / 6	4000 / 3500	4000 / 3500
	2W500	5000	3250	5930	6130	150	150		6 / 6	3900 / 3500	3900 / 3500
	2W530	5250	3350	6180	6380	150	150		6 / 6	3700 / 3000	3800 / 3400
	2W550	5500	3500	6430	6630	150	150		6 / 6	2800 / 2400	3600 / 3300
	2W600	6000	3750	6930	7130	150	150		6 / 6	2200 / 2000	3400 / 3200
Two stage (Full free 2F)	2F290	2860	2100	3180	3990	1200	1020	557	6 / 10	4000 / 3500	4000 / 3500
	2F300	3000	2170	3950	4130	1270	1090		6 / 10	4000 / 3500	4000 / 3500
	2F330	3300	2320	4250	4430	1420	1240		6 / 10	4000 / 3500	4000 / 3500
	2F370	3700	2520	4650	4830	1460	1440		6 / 10	4000 / 3500	4000 / 3500
	2F410	4060	2700	5010	5190	1800	1620		6 / 10	4000 / 3500	4000 / 3500
Three stage (Full free 3F)	3F370	3700	1950	4650	4830	1050	870	557	6 / 6	4000 / 3500	4000 / 3500
	3F400	4000	2050	4950	5130	1150	970		6 / 6	4000 / 3500	4000 / 3500
	3F430	4360	2170	5310	5490	1270	1090		6 / 6	4000 / 3500	4000 / 3500
	3F460	4600	2250	5550	5730	1350	1170		6 / 6	4000 / 3500	4000 / 3500
	3F470	4700	2285	5650	5830	1390	1200		6 / 6	4000 / 3500	4000 / 3500
	3F500	5050	2400	6000	6180	1500	1320		6 / 6	3900 / 3500	3900 / 3500
	3F530	5260	2470	6210	6390	1570	1390		6 / 6	3700 / 3000	3800 / 3500
	3F550	5500	2550	6450	6630	1650	1470		6 / 6	2800 / 2400	3500 / 3300
	3F600	6000	2750	6950	7130	1850	1670		6 / 6	2100 / 1800	3300 / 3200
	3F650	6500	2950	7450	7630	2000	1870		6 / 6	1600 / 1400	2800 / 2800
	3F700	7000	3150	7950	8130	2250	2070		6 / 6	1200 / 1000	2100 / 2100

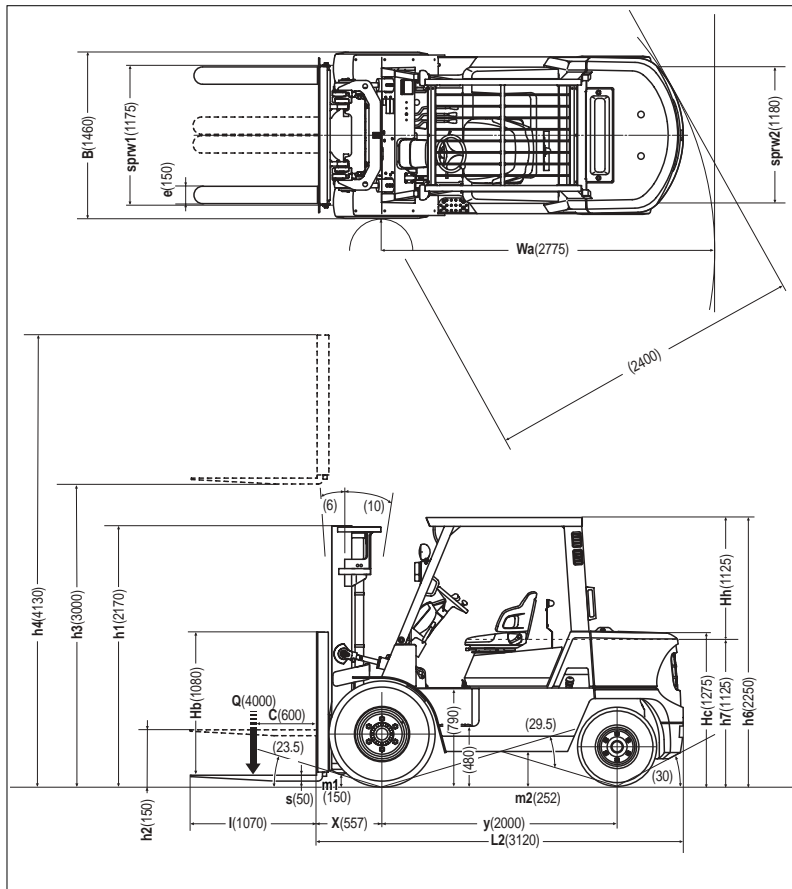
* Front overhang depends on carriage specification.

Main Truck Specifications

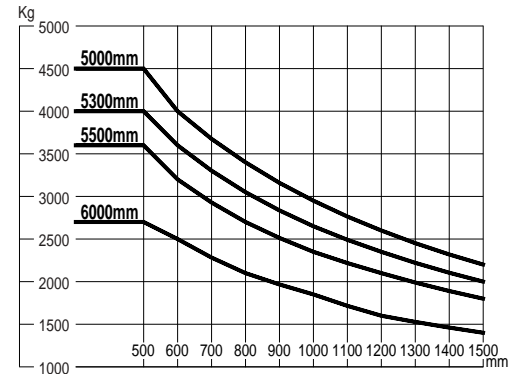
		Item			F04D40UT	F04D40UD	F04B40UT		
SPECIFICATIONS	1	Manufacturer / Seller			MHI / NISSAN	MHI / NISSAN	MHI / NISSAN	1	
	2	Model			F04D40UT	F04D40UD	F04B40UT	2	
	3	Load capacity	Q	load lifted	kg	4000 / 3500	4000 / 3500	4000 / 3500	3
	4	Load center	C	distance	mm	500 / 600	500 / 600	500 / 600	4
	5	Power unit			Diesel	Diesel	Gasoline	5	
	6	Operator type			Rider / seat	Rider / seat	Rider / seat	6	
	7	Tire type			Pneumatic	Pneumatic	Pneumatic	7	
	8	Wheels(x=driven)	number	single front / rear		2 x / 2	2 x / 2	2 x / 2	8
DIMENSIONS	9	Maximum fork height	h3	standard lift height	mm	3000	3000	3000	9
	10	Free lift	h2	standard free lift	mm	150	150	150	10
	13	Fork size	s.e.l		mm	50 x 150 x 1070	50 x 150 x 1070	50 x 150 x 1070	13
		Max. Fork Spread			mm	1190	1190	1190	
		Min. Fork Spread			mm	300	300	300	
	14	Tilt range	/	mast forward / backward	deg	6 / 10	6 / 10	6 / 10	14
	15	Overall measurement	L2	length to fork face	mm	3070	3070	3070	15
	16		B	overall width single	mm	1415	1415	1415	16
	17		h1	height mast retracted	mm	2170	2170	2170	17
	18		h4	height mast extended	mm	4130	4130	4130	18
	19		h6	height overhead guard	mm	2250	2250	2250	19
	20		h7	height of driver's seat	mm	1125	1125	1125	20
	21		Turning radius (outside)	Wa		mm	2735	2735	2735
	22	Load distance	X	from center of front axle	mm	557	557	557	22
	23	Basic right angle stacking aisle			mm	4360	4360	4360	23
PERFORMANCE	24	travelling	full load	km/h	17.5	17.5	18	24	
			no load	km/h	19.5	19.5	19.5		
	25	lifting	full load	mm/s	500	500	510	25	
			no load	mm/s	520	520	510		
	26	lowering	full load	mm/s	500	500	500	26	
			no load	mm/s	500	500	500		
	28	Max. drawbar pull	full load / no load		N	23520/16600	16600/16600	30400/16700	28
	29	Gradeability at 2km/h	full load / no load	foward	tan %	22.0 / 27.3		26.8 / 27.4	29
				reverse	tan %	21.6 / 36.4		26.6 / 50.5	
	30	Max. gradeability	full load / no load	foward	tan %	27.4 / 27.3	19.5 / 27.2	33.3 / 27.4	30
reverse				tan %	27.2 / 45.8	19.3 / 31.5	33.1 / 56.2		
WEIGHTS	32	Truck weight	no load	single	kg	5670	5650	5570	32
	33	Weight distribution	full load	single front / rear	kg	8050 / 1080	8020 / 1080	8580 / 990	33
			no load	single front / rear	kg	2520 / 3110	2500 / 3100	2460 / 3110	34
CHASSIS & WHEELS	35	Tires	number	front / rear	each	2 / 2	2 / 2	2 / 2	35
	36		size-front	single		8.25-15-14PR()	8.25-15-14PR()	8.25-15-14PR()	36
	37		size-rear			7.00-12-12PR()	7.00-12-12PR()	7.00-12-12PR()	37
	38	Wheelbase	y		mm	2000	2000	2000	38
	39	Tread	sprw 1 / sprw 2	single front / rear	mm	1175 / 1180	1175 / 1180	1175 / 1180	39
		Backrest height	Hb	top of backrest ~ upper of fork face	mm	1080	1080	1080	
		Overhead guard clearance	Hh		mm	1125	1125	1125	
		Counterweight height	Hc		mm	1275	1275	1275	
	40	Ground clearance	m1	full load minimum	mm	150	150	150	40
	41		m2	full load center of wheelbase	mm	252	252	252	41
42	Service brake	mechanical / hydraulic / electric / pneu				Hydraulic	Hydraulic	Hydraulic	42
43	Parking brake	foot / hand / seat switch				Hand	Hand	Hand	43
DRIVE LINE	45	Battery	voltage / capacity (5 hour)		V/AH	24 / 80	24 / 80	12 / 48	45
	49	Internal Combustion engine	manufacturer / type			MHI / S6S	MHI / S6S	NISSAN / TB45	49
	50		maximum engine rated power	kW/rpm	62.5 / 2450	62.5 / 2450	72 / 2450	50	
	51		maximum engine rated torque	Nm/rpm	250 / 1600	250 / 1600	280 / 1200	51	
	52		number of cylinders / displacement	/ cc	6 / 4996	6 / 4996	6 / 4500	52	
55	Transmission	type			Automatic	Manual (Dry clutch)	Automatic	55	
57	Operating pressure	speed foward / reverse			1 / 1	1 / 1	1 / 1	57	
		for attachment		MPa	19.1	19.1	19.1		

F04-U

Dimensions



Load Capacity Chart



No capacity reduction until 5000 mm height. Load capacities are computed with following conditions, a) Standard 2W Mast and b) Mast in vertical position.

Tire and Tread specifications

Front Tire	single	double	special double
Front Tire Size	300-15-20PR()	7.50-16-12PR()	8.25-15-12PR()
Overall Width mm	1460	1780	1965
Front Tread mm	1175	1310	1445

Ground Clearance

Under mast	mm	150
Under frame	mm	252

Mast Specifications & Rated Capacities

F04D40HUT,F04D40HUD,F04B40HUT

Mast type	Mast name	Max. fork Height mm	Overall height		Free lift		Front overhang mm	Tilt angle Forward/ Backward deg	Capacity		
			Fully lowered mm	Fully extended		*Without backrest mm			With STD backrest mm	Single tire Load center 600mm Kg	Double tire Load center 600mm Kg
				*Without backrest mm	With STD backrest mm						
Two stage (Wide view 2W)	2W300	3000	2170	3930	4130	150	150	557	6 / 10	4000	4000
	2W330	3300	2320	4230	4430	150	150		6 / 10	4000	4000
	2W350	3500	2420	4430	4630	150	150		6 / 10	4000	4000
	2W370	3700	2520	4630	4830	150	150		6 / 10	4000	4000
	2W400	4000	2700	4930	5130	150	150		6 / 10	4000	4000
	2W450	4500	3000	5430	5630	150	150		6 / 6	4000	4000
	2W500	5000	3250	5930	6130	150	150		6 / 6	4000	4000
	2W530	5250	3350	6180	6380	150	150		6 / 6	3600	3950
	2W550	5500	3500	6430	6630	150	150		6 / 6	3200	3900
	2W600	6000	3750	6930	7130	150	150		6 / 6	2500	3700
Two stage (Full free 2F)	2F290	2860	2100	3810	3990	1200	1020	557	6 / 10	4000	4000
	2F300	3000	2170	3950	4130	1270	1090		6 / 10	4000	4000
	2F330	3300	2320	4250	4430	1420	1240		6 / 10	4000	4000
	2F370	3700	2520	4650	4830	1620	1440		6 / 10	4000	4000
	2F410	4060	2700	5010	5190	1800	1620		6 / 10	4000	4000
	3F370	3700	1950	4650	4830	1050	870		6 / 6	4000	4000
Three stage (Full free 3F)	3F400	4000	2050	4950	5130	1150	970	557	6 / 6	4000	4000
	3F430	4360	2170	5310	5490	1270	1090		6 / 6	4000	4000
	3F460	4600	2250	5550	5730	1350	1170		6 / 6	4000	4000
	3F470	4700	2285	5650	5830	1390	1200		6 / 6	4000	4000
	3F500	5050	2400	6000	6180	1500	1320		6 / 6	4000	4000
	3F530	5260	2470	6210	6390	1570	1390		6 / 6	3600	3900
	3F550	5500	2550	6450	6630	1650	1470		6 / 6	3200	3800
	3F600	6000	2750	6950	7130	1850	1670		6 / 6	2400	3700
	3F650	6500	2950	7450	7630	2050	1870		6 / 6	1800	2800
	3F700	7000	3150	7950	8130	2250	2070		6 / 6	1300	2100

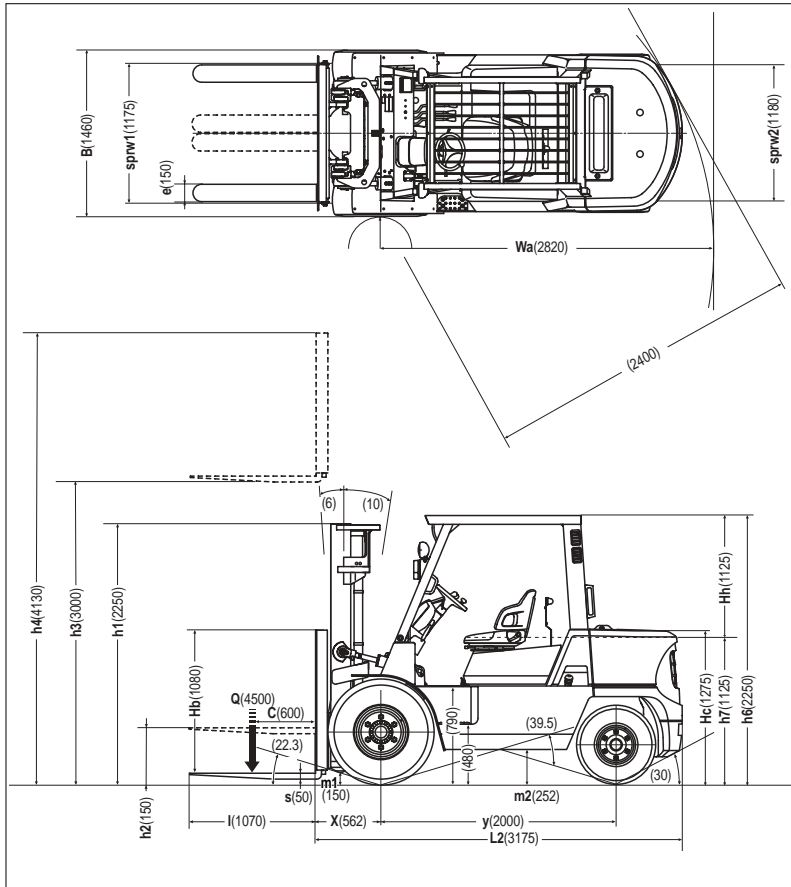
* Front overhang depends on carriage specification.

Main Truck Specifications

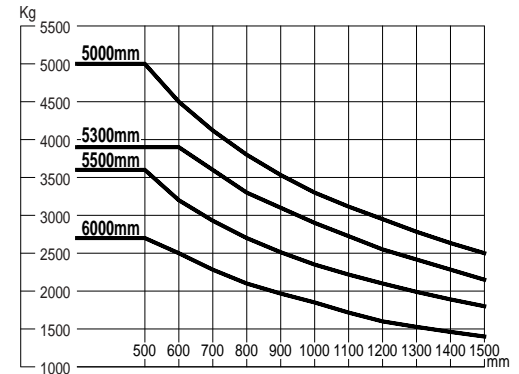
		Item			F04D40HUT	F04D40HUD	F04B40HUT			
SPECIFICATIONS	1	Manufacturer / Seller			MHI / NISSAN	MHI / NISSAN	MHI / NISSAN	1		
	2	Model			F04D40HUT	F04D40HUD	F04B40HUT	2		
	3	Load capacity	Q	load lifted	kg	4000	4000	4000	3	
	4	Load center	C	distance	mm	600	600	600	4	
	5	Power unit	battery, diesel, gasoline, LP gas			Diesel	Diesel	Gasoline	5	
	6	Operator type	walkie, rider / stand, rider / seat			Rider / seat	Rider / seat	Rider / seat	6	
	7	Tire type	front / rear			Pneumatic	Pneumatic	Pneumatic	7	
	8	Wheels(x=driven)	number	single	front / rear	2 x / 2	2 x / 2	2 x / 2	8	
DIMENSIONS	9	Maximum fork height	h3	standard lift height	mm	3000	3000	3000	9	
	10	Free lift	h2	standard free lift	mm	150	150	150	10	
	13	Fork size	s.e.l			mm	50 x 150 x 1070	50 x 150 x 1070	50 x 150 x 1070	13
		Max. Fork Spread				mm	1190	1190	1190	
		Min. Fork Spread				mm	300	300	300	
	14	Tilt range	/	mast forward / backward		deg	6 / 10	6 / 10	6 / 10	14
	15	Overall measurement	L2	length to fork face		mm	3120	3120	3120	15
	16		B	overall width single		mm	1460	1460	1460	16
	17		h1	height mast retracted		mm	2170	2170	2170	17
	18		h4	height mast extended		mm	4130	4130	4130	18
	19		h6	height overhead guard		mm	2250	2250	2250	19
	20		h7	height of driver's seat		mm	1125	1125	1125	20
	21		Turning radius (outside)	Wa			mm	2775	2775	2775
	22	Load distance	X	from center of front axle		mm	557	557	557	22
	23	Basic right angle stacking aisle				mm	4550	4550	4550	23
PERFORMANCE	24		travelling	full load	km/h	17.5	18	18	24	
	no load			km/h	19.5	19.5	19.5			
	25	Speeds	lifting	full load	mm/s	500	500	510	25	
	no load			mm/s	520	520	510			
	26		lowering	full load	mm/s	500	500	500	26	
	no load			mm/s	500	500	500			
	28	Max. drawbar pull	full load / no load			N	22540/16600	15680/15680	29400/16700	28
	29	Gradeability at 2km/h	full load / no load	foward	tan %	19.5 / 25.7			25.8 / 25.2	29
				reverse	tan %	19.3 / 33.8			25.5 / 46.3	
	30	Max. gradeability	full load / no load	foward	tan %	24.1 / 25.7	17.2 / 25.6		32.0 / 25.2	30
reverse				tan %	23.9 / 42.1	17.0 / 29.2		31.8 / 51.4		
WEIGHTS	32	Truck weight	no load	single	kg	6070	6050	5970	32	
	33	Weight distribution	full load	single	front / rear	kg	8820 / 1210	8800 / 1210	8750 / 1220	33
	34		no load	single	front / rear	kg	2500 / 3530	2490 / 3520	2440 / 3530	34
CHASSIS & WHEELS	35	Tires	number	front / rear	each	2(4) / 2	2(4) / 2	2(4) / 2	35	
	36		size-front	single		300-15-20PR()	300-15-20PR()	300-15-20PR()	36	
	37		size-rear			7.00-12-12PR()	7.00-12-12PR()	7.00-12-12PR()	37	
	38	Wheelbase	y			mm	2000	2000	2000	38
	39	Tread	sprw 1 / sprw 2	single	front / rear	mm	1175 / 1180	1175 / 1180	1175 / 1180	39
		Backrest height	Hb	top of backrest ~ upper of fork face		mm	1080	1080	1080	
		Overhead guard clearance	Hh			mm	1125	1125	1125	
		Counterweight height	Hc			mm	1275	1275	1275	
	40	Ground clearance	m1	full load minimum		mm	150	150	150	40
	41		m2	full load center of wheelbase		mm	252	252	252	41
42	Service brake	mechanical / hydraulic / electric / pneu				Hydraulic	Hydraulic	Hydraulic	42	
43	Parking brake	foot / hand / seat switch				Hand	Hand	Hand	43	
DRIVE LINE	45	Battery	voltage / capacity (5 hour)		V/AH	24 / 80	24 / 80	12 / 48	45	
	49	Internal Combustion engine	manufacturer / type			MHI / S6S	MHI / S6S	NISSAN / TB45	49	
	50		maximum engine rated power	kW/rpm	62.5 / 2450	69.5 / 2450	72 / 2450	50		
	51		maximum engine rated torque	Nm/rpm	250 / 1600	250 / 1600	280 / 1200	51		
	52		number of cylinders / displacement	/ cc	6 / 4996	6 / 4996	6 / 4500	52		
55	Transmission	type			Automatic	Manual (Dry clutch)	Automatic	55		
57	Operating pressure	speed foward / reverse			1 / 1	1 / 1	1 / 1	57		
		for attachment		MPa	19.1	19.1	19.1			

F04-U

Dimensions



Load Capacity Chart



No capacity reduction until 5000 mm height. Load capacities are computed with following conditions, a) Standard 2W Mast and b) Mast in vertical position.

Tire and Tread specifications

Front Tire	single	double	special double
Front Tire Size	300-15-20PR()	7.50-16-12PR()	8.25-15-12PR()
Overall Width mm	1460	1780	1965
Front Tread mm	1175	1310	1445

Ground Clearance

Under mast	mm	150
Under frame	mm	252

Mast Specifications & Rated Capacities

F04D45UT, F04D45UD, F04B45UT

Mast type	Mast name	Max. fork Height mm	Overall height		Free lift		Front overhang mm	Tilt angle Forward/ Backward deg	Capacity		
			Fully lowered mm	Fully extended		*Without backrest mm			With STD backrest mm	Single tire Load center 600mm Kg	Double tire Load center 600mm Kg
				*Without backrest mm	With STD backrest mm						
Two stage (Wide view 2W)	2W300	3000	2250	3890	4130	150	150	562	6 / 10	4500	4500
	2W330	3300	2400	4190	4430	150	150		6 / 10	4500	4500
	2W350	3500	2500	4390	4630	150	150		6 / 10	4500	4500
	2W370	3700	2600	4590	4830	150	150		6 / 10	4500	4500
	2W400	4000	2850	4890	5130	150	150		6 / 10	4500	4500
	2W450	4500	3100	5390	5630	150	150		6 / 6	4500	4500
	2W500	5000	3350	5890	6130	150	150		6 / 6	4500	4500
	2W530	5250	3450	6140	6380	150	150		6 / 6	3900	4450
	2W550	5500	3600	6390	6630	150	150		6 / 6	3200	4000
	2W600	6000	3850	6890	7130	150	150		6 / 6	2500	3700
Two stage (Full free 2F)	2F270	2680	2100	3580	3810	1250	1020	562	6 / 10	4500	4500
	2F300	2970	2250	3870	4100	1400	1170		6 / 10	4500	4500
	2F330	3280	2400	4180	4410	1550	1320		6 / 10	4500	4500
	2F350	3480	2500	4380	4610	1650	1420		6 / 10	4500	4500
	2F410	4080	2850	4980	5210	2000	1770		6 / 10	4500	4500
	3F370	3700	2050	4610	4830	1200	970		562	6 / 6	4500
3F380	3850	2100	4760	4980	1250	1020	6 / 6	4500		4500	
3F400	4040	2170	4950	5170	1320	1090	6 / 6	4500		4500	
3F430	4310	2260	5220	5440	1410	1180	6 / 6	4500		4500	
3F450	4500	2320	5410	5630	1470	1240	6 / 6	4500		4500	
3F470	4750	2400	5660	5880	1550	1320	6 / 6	4500		4500	
3F500	5050	2500	5960	6180	1650	1420	6 / 6	4500		4500	
3F530	5260	2570	6170	6390	1720	1490	6 / 6	3900		4400	
3F550	5500	2650	6410	6630	1800	1570	6 / 6	3200		4300	
3F600	6000	2850	6910	7130	2000	1770	6 / 6	2400		3700	
3F650	6500	3050	7410	7630	2200	1970	6 / 6	1800	2800		
3F700	7000	3250	7910	8130	2400	2170	6 / 6	1300	2100		

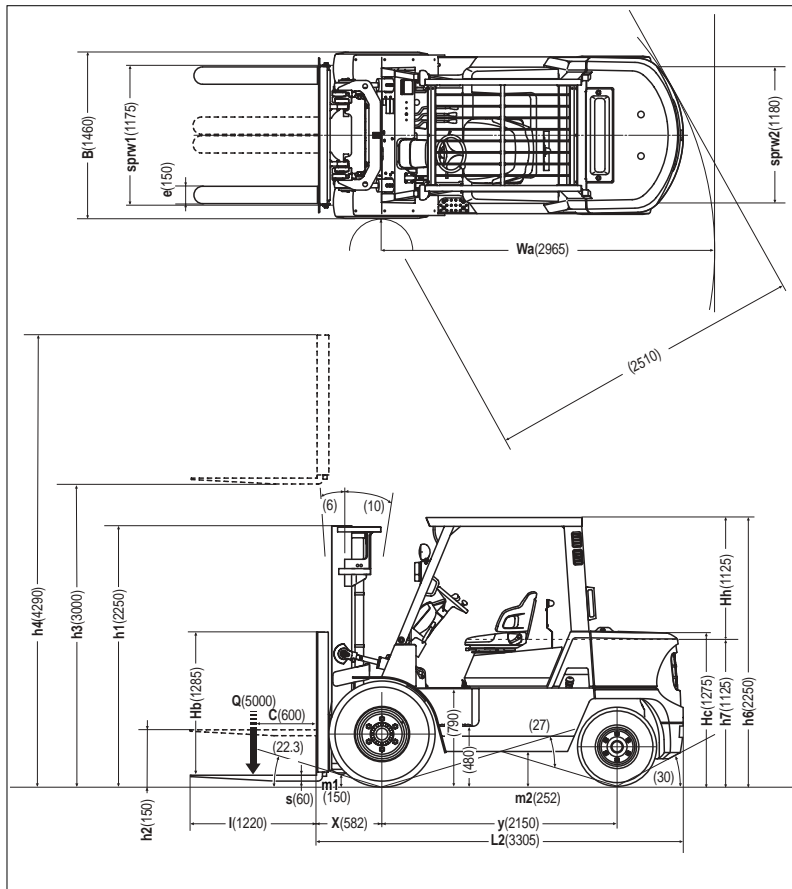
* Front overhang depends on carriage specification.

Main Truck Specifications

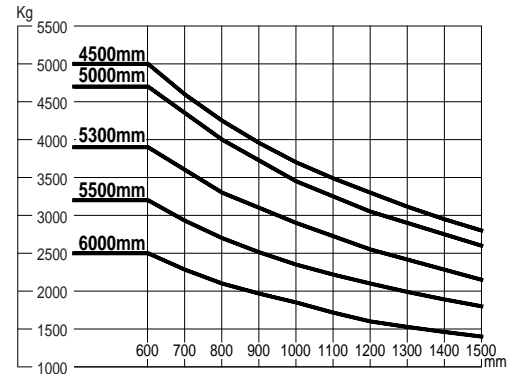
		Item			F04D45UT	F04D45UD	F04B45UT		
SPECIFICATIONS	1	Manufacturer / Seller			MHI / NISSAN	MHI / NISSAN	MHI / NISSAN	1	
	2	Model			F04D45UT	F04D45UD	F04B45UT	2	
	3	Load capacity	Q	load lifted	kg	4500	4500	4500	3
	4	Load center	C	distance	mm	600	600	600	4
	5	Power unit			Diesel	Diesel	Gasoline	5	
	6	Operator type			Rider / seat	Rider / seat	Rider / seat	6	
	7	Tire type			Pneumatic	Pneumatic	Pneumatic	7	
	8	Wheels(x=driven)	number	single front / rear		2 x / 2	2 x / 2	2 x / 2	8
DIMENSIONS	9	Maximum fork height	h3	standard lift height	mm	3000	3000	3000	9
	10	Free lift	h2	standard free lift	mm	150	150	150	10
	13	Fork size	s.e.l		mm	50 x 150 x 1070	50 x 150 x 1070	50 x 150 x 1070	13
		Max. Fork Spread			mm	1190	1190	1190	
		Min. Fork Spread			mm	300	300	300	
	14	Tilt range	/	mast forward / backward	deg	6 / 10	6 / 10	6 / 10	14
	15	Overall measurement	L2	length to fork face	mm	3175	3175	3175	15
	16		B	overall width single	mm	1460	1460	1460	16
	17		h1	height mast retracted	mm	2250	2250	2250	17
	18		h4	height mast extended	mm	4130	4130	4130	18
	19		h6	height overhead guard	mm	2250	2250	2250	19
	20		h7	height of driver's seat	mm	1125	1125	1125	20
	21		Turning radius (outside)	Wa		mm	2820	2820	2820
	22	Load distance	X	from center of front axle	mm	562	562	562	22
	23	Basic right angle stacking aisle			mm	4600	4600	4600	23
PERFORMANCE	24	travelling	full load	km/h	17.5	18	18	24	
			no load	km/h	19.5	19.5	19.5		
	25	lifting	full load	mm/s	430	430	440	25	
			no load	mm/s	450	450	440		
	26	lowering	full load	mm/s	500	500	500	26	
			no load	mm/s	500	500	500		
	28	Max. drawbar pull	full load / no load		N	22540/17640	16600/15680	29400/15700	28
	29	Gradeability at 2km/h	full load / no load	foward	tan %	17.4 / 24.3		23.0 / 22.3	29
				reverse	tan %	17.3 / 30.3		22.8 / 40.9	
	30	Max. gradeability	full load / no load	foward	tan %	21.7 / 24.3	15.4 / 24.2	28.5 / 22.3	30
reverse				tan %	21.5 / 37.5	15.3 / 26.3	28.3 / 45.9		
WEIGHTS	32	Truck weight	no load	single	kg	6630	6610	6530	32
	33	Weight distribution	full load	single front / rear	kg	9690 / 1400	9660 / 1400	9510 / 1520	33
			no load	single front / rear	kg	2570 / 4020	2550 / 4010	2390 / 4140	
34		number	front / rear	each	2(4) / 2	2(4) / 2	2(4) / 2	34	
CHASSIS & WHEELS	36	Tires	size-front	single		300-15-20PR()	300-15-20PR()	300-15-20PR()	36
			size-rear			7.00-12-12PR()	7.00-12-12PR()	7.00-12-12PR()	
	38	Wheelbase	y		mm	2000	2000	2000	38
	39	Tread	sprw 1 / sprw 2	single front / rear	mm	1175 / 1180	1175 / 1180	1175 / 1180	39
		Backrest height	Hb top of backrest ~ upper of fork face		mm	1080	1080	1080	
		Overhead guard clearance	Hh		mm	1125	1125	1125	
		Counterweight height	Hc		mm	1275	1275	1275	
	40	Ground clearance	m1	full load minimum	mm	150	150	150	40
			m2	full load center of wheelbase	mm	252	252	252	41
42	Service brake	mechanical / hydraulic / electric / pneu				Hydraulic	Hydraulic	Hydraulic	42
43	Parking brake	foot / hand / seat switch				Hand	Hand	Hand	43
DRIVE LINE	45	Battery	voltage / capacity (5 hour)		V/AH	24 / 80	24 / 80	12 / 48	45
	49	Internal Combustion engine	manufacturer / type			MHI / S6S	MHI / S6S	NISSAN / TB45	49
	50		maximum engine rated power		kW/rpm	62.5 / 2450	62.5 / 2450	72 / 2450	50
	51		maximum engine rated torque		Nm/rpm	250 / 1600	250 / 1600	280 / 1200	51
	52		number of cylinders / displacement		/ cc	6 / 4996	6 / 4996	6 / 4500	52
55	Transmission	type			Automatic	Manual (Dry clutch)	Automatic	55	
57	Operating pressure	speed foward / reverse			1 / 1	1 / 1	1 / 1	57	
		for attachment		MPa	19.1	19.1	19.1		

F04-U

Dimensions



Load Capacity Chart



No capacity reduction until 4500 mm height. Load capacities are computed with following conditions, a) Standard 2W Mast and b) Mast in vertical position.

Tire and Tread specifications

Front Tire	single	double	special double
Front Tire Size	300-15-20PR()	7.50-16-12PR()	8.25-15-12PR()
Overall Width mm	1460	1780	1965
Front Tread mm	1175	1310	1445

Ground Clearance

Under mast	mm	150
Under frame	mm	252

Mast Specifications & Rated Capacities

F04D50UT, F04B50UT

Mast type	Mast name	Max. fork Height mm	Overall height		Free lift		Front overhang mm	Tilt angle Forward/ Backward deg	Capacity		
			Fully lowered mm	Fully extended		*Without backrest mm			With STD backrest mm	Single tire Load center 600mm Kg	Double tire Load center 600mm Kg
				*Without backrest mm	With STD backrest mm						
Two stage (Wide view 2W)	2W300	3000	2250	4030	4290	160	160	582	6 / 10	5000	5000
	2W330	3300	2400	4330	4590	160	160		6 / 10	5000	5000
	2W350	3500	2500	4530	4790	160	160		6 / 10	5000	5000
	2W370	3700	2600	4730	4990	160	160		6 / 10	5000	5000
	2W400	4000	2850	5030	5290	160	160		6 / 10	5000	5000
	2W450	4500	3100	5530	5790	160	160		6 / 6	5000	5000
	2W500	5000	3350	6030	6290	160	160		6 / 6	4700	5000
	2W530	5250	3450	6280	6540	160	160		6 / 6	3900	4900
	2W550	5500	3600	6530	6790	160	160		6 / 6	3200	4800
	2W600	6000	3850	7030	7290	160	160		6 / 6	2500	3700
Two stage (Full free 2F)	2F270	2680	2100	3710	3960	1130	880	582	6 / 10	5000	5000
	2F300	2970	2250	4000	4250	1280	1030		6 / 10	5000	5000
	2F330	3280	2400	4310	4560	1430	1180		6 / 10	5000	5000
	2F350	3480	2500	4510	4760	1530	1280		6 / 10	5000	5000
	2F410	4080	2850	5110	5360	1880	1630		6 / 10	5000	5000
	3F370	3700	2050	4740	4990	1080	830		582	6 / 6	5000
3F380	3850	2100	4890	5140	1130	880	6 / 6	5000		5000	
3F400	4040	2170	5080	5330	1200	950	6 / 6	5000		5000	
3F430	4310	2260	5350	5600	1290	1040	6 / 6	5000		5000	
3F450	4500	2320	5540	5790	1350	1100	6 / 6	5000		5000	
3F470	4750	2400	5790	6040	1430	1180	6 / 6	5000		5000	
3F500	5050	2500	6090	6340	1530	1280	6 / 6	4600		5000	
3F530	5260	2570	6300	6550	1600	1350	6 / 6	3900		4800	
3F550	5500	2650	6540	6790	1680	1430	6 / 6	3200		4700	
3F600	6000	2850	7040	7290	1880	1630	6 / 6	2400		3700	
3F650	6500	3050	7540	7790	2080	1830	6 / 6	1800	2800		
3F700	7000	3250	8040	8290	2280	2030		1300	2100		

* Front overhang depends on carriage specification.

Main Truck Specifications

					F04D50UT	F04B50UT				
					Item					
SPECIFICATIONS	1	Manufacturer / Seller				MHI / NISSAN	MHI / NISSAN	1		
	2	Model				F04D50UT	F04B50UT	2		
	3	Load capacity	Q	load lifted	kg	5000	5000	3		
	4	Load center	C	distance	mm	600	600	4		
	5	Power unit	battery, diesel, gasoline, LP gas			Diesel	Gasoline	5		
	6	Operator type	walkie, rider / stand, rider / seat			Rider / seat	Rider / seat	6		
	7	Tire type	front / rear			Pneumatic	Pneumatic	7		
	8	Wheels(x=driven)	number	single	front / rear	2 x / 2	2 x / 2	8		
DIMENSIONS	9	Maximum fork height	h3	standard lift height	mm	3000	3000	9		
	10	Free lift	h2	standard free lift	mm	160	160	10		
	13	Fork size	s.e.l		mm	60 x 150 x 1220	60 x 150 x 1220	13		
		Max. Fork Spread			mm	1190	1190			
		Min. Fork Spread			mm	300	300			
	14	Tilt range	/	mast forward / backward	deg	6 / 10	6 / 10	14		
	15	Overall measurement	L2	length to fork face	mm	3305	3305	15		
	16		B	overall width single	mm	1460	1460	16		
	17		h1	height mast retracted	mm	2250	2250	17		
	18		h4	height mast extended	mm	4290	4290	18		
	19		h6	height overhead guard	mm	2250	2250	19		
	20		h7	height of driver's seat	mm	1125	1125	20		
	21	Turning radius (outside)	Wa			mm	2965	2965	21	
	22	Load distance	X	from center of front axle	mm	582	582	22		
	23	Basic right angle stacking aisle			mm	4770	4770	23		
PERFORMANCE	24	travelling	full load	km/h	21	21	24			
	no load		km/h	23.5	23.5					
	25	lifting	full load	mm/s	420	440	25			
	no load		mm/s	440	440					
	26	lowering	full load	mm/s	500	500	26			
	no load		mm/s	500	500					
	28	Max. drawbar pull	full load / no load		N	33320/20580	43100/19600	28		
	29	Gradeability at 2km/h	full load / no load	foward	tan %	21.9 / 26.3	29.4 / 25.7	29		
				reverse	tan %	21.6 / 39.1	29.0 / 50.6			
	30	Max. gradeability	full load / no load	foward	tan %	30.4 / 26.3	41.3 / 25.7	30		
reverse				tan %	30.0 / 51.9	40.8 / 50.6				
WEIGHTS	32	Truck weight	no load	single	kg	7150	7050	32		
	33	Weight distribution	full load	single	front / rear	kg	10690 / 1410	10650 / 1400	33	
			no load	single	front / rear	kg	2940 / 4160	2900 / 4150	34	
CHASSIS & WHEELS	35	Tires	number	front / rear	each	2(4) / 2	2(4) / 2	35		
	36		size-front	single		300-15-20PR()	300-15-20PR()	36		
	37		size-rear			7.00-12-12PR()	7.00-12-12PR()	37		
	38	Wheelbase	y			mm	2150	2150	38	
	39	Tread	sprw 1 / sprw 2	single	front / rear	mm	1175 / 1180	1175 / 1180	39	
		Backrest height	Hb	top of backrest ~ upper of fork face		mm	1285	1285		
		Overhead guard clearance	Hh			mm	1125	1125		
		Counterweight height	Hc			mm	1275	1275		
	40	Ground clearance	m1	full load minimum		mm	150	150	40	
	41		m2	full load center of wheelbase		mm	252	252	41	
42	Service brake	mechanical / hydraulic / electric / pneu				Hydraulic	Hydraulic	42		
43	Parking brake	foot / hand / seat switch				Hand	Hand	43		
DRIVE LINE	45	Battery	voltage / capacity (5 hour)		V/AH	24 / 80	12 / 48	45		
	49	Internal Combustion engine	manufacturer / type			MHI / S6S	NISSAN / TB45	49		
	50		maximum engine rated power		kW/rpm	62.5 / 2450	72 / 2450	50		
	51		maximum engine rated torque		Nm/rpm	250 / 1600	280 / 1200	51		
	52		number of cylinders / displacement		/ cc	6 / 4996	6 / 4500	52		
55	Transmission	type			Automatic	Automatic	55			
57	Operating pressure	speed		foward / reverse		2 / 2	2 / 2	57		
		for attachment		MPa	19.1	19.1				

F04-U

Loading Capacity

F04D40UT, F04D40UD, F04B40UT

Unit:kg

Mast name	Load center	500mm	600	700	800	900	1000	1100	1200	1300	1400	1500
Single Tire	2W300	4000	3500		2950		2550		2300			1950
	2W330	4000	3500		2950		2550		2300			1950
	2W350	4000	3500		2950		2550		2300			1950
	2W370	4000	3500		2950		2550		2300			1950
	2W400	4000	3500		2950		2550		2300			1950
	2W450	4000	3500		2950		2550		2300			1950
	2W500	3900	3500		2950		2550		2300			1950
	2W530	3700	3250		2750		2450		2150			1850
	2W550	2800	2400		2000		1750		1550			1350
	2W600	2200	2000		1700		1450		1300			1100
	2F290	4000	3500		2950		2550		2300			1950
	2F300	4000	3500		2950		2550		2300			1950
	2F330	4000	3500		2950		2550		2300			1950
	2F370	4000	3500		2950		2550		2300			1950
	2F410	4000	3500		2950		2550		2300			1950
	3F370	4000	3500		2950		2550		2300			1950
	3F400	4000	3500		2950		2550		2300			1950
	3F430	4000	3500		2950		2550		2300			1950
	3F460	4000	3500		2950		2550		2300			1950
	3F470	4000	3500		2950		2550		2300			1950
	3F500	3900	3500		2950		2550		2300			1950
	3F530	3800	3000		2550		2200		1950			1650
	3F550	2800	2400		2000		1750		1550			1350
	3F600	2100	1800		1500		1300		1150			1000
	3F650	1600	1400		1150		1000		900			750
	3F700	1200	1000		850		750		650			550

F04D40UT, F04D40UD, F04B40UT

Unit:kg

Mast name	Load center	500mm	600	700	800	900	1000	1100	1200	1300	1400	1500
Double Tire/Special Double Tire	2W300	4000	3500		2950		2550		2300			1950
	2W330	4000	3500		2950		2550		2300			1950
	2W350	4000	3500		2950		2550		2300			1950
	2W370	4000	3500		2950		2550		2300			1950
	2W400	4000	3500		2950		2550		2300			1950
	2W450	4000	3500		2950		2550		2300			1950
	2W500	3900	3500		2950		2550		2300			1950
	2W530	3800	3400		2900		2500		2200			1900
	2W550	3600	3300		2800		2450		2150			1850
	2W600	3400	3200		2700		2350		2100			1800
	2F290	4000	3500		2950		2550		2300			1950
	2F300	4000	3500		2950		2550		2300			1950
	2F330	4000	3500		2950		2550		2300			1950
	2F370	4000	3500		2950		2550		2300			1950
	2F410	4000	3500		2950		2550		2300			1950
	3F370	4000	3500		2950		2550		2300			1950
	3F400	4000	3500		2950		2550		2300			1950
	3F430	4000	3500		2950		2550		2300			1950
	3F460	4000	3500		2950		2550		2300			1950
	3F470	4000	3500		2950		2550		2300			1950
	3F500	3900	3500		2950		2550		2300			1950
	3F530	3800	3400		2900		2500		2200			1900
	3F550	3500	3300		2800		2450		2150			1850
	3F600	3300	3200		2700		2350		2100			1800
	3F650	2800	2800		2350		2050		1800			1550
	3F700	2100	2100		1750		1550		1350			1150

F04D40HUT, F04D40HUD, F04B40HUT

Unit:kg

Mast name \ Load center		Load center										
		500mm	600	700	800	900	1000	1100	1200	1300	1400	1500
Single Tire	2W300	4500	4000		3400		2950		2600			2200
	2W330	4500	4000		3400		2950		2600			2200
	2W350	4500	4000		3400		2950		2600			2200
	2W370	4500	4000		3400		2950		2600			2200
	2W400	4500	4000		3400		2950		2600			2200
	2W450	4500	4000		3400		2950		2600			2200
	2W500	4500	4000		3400		2950		2600			2200
	2W530	4000	3600		3050		2650		2350			2000
	2W550	3600	3200		2700		2350		2100			1800
	2W600	2700	2500		2100		1850		1600			1400
	2F290	4500	4000		3400		2950		2600			2200
	2F300	4500	4000		3400		2950		2600			2200
	2F330	4500	4000		3400		2950		2600			2200
	2F370	4500	4000		3400		2950		2600			2200
	2F410	4500	4000		3400		2950		2600			2200
	3F370	4500	4000		3400		2950		2600			2200
	3F400	4500	4000		3400		2950		2600			2200
	3F430	4500	4000		3400		2950		2600			2200
	3F460	4500	4000		3400		2950		2600			2200
	3F470	4500	4000		3400		2950		2600			2200
	3F500	4500	4000		3400		2950		2600			2200
	3F530	4000	3600		3050		2650		2350			2000
	3F550	3600	3200		2700		2350		2100			1800
	3F600	2700	2400		2000		1750		1550			1350
	3F650	2000	1800		1500		1300		1150			1000
	3F700	1500	1300		1100		950		850			700

F04D40HUT, F04D40HUD, F04B40HUT

Unit:kg

Mast name \ Load center		Load center										
		500mm	600	700	800	900	1000	1100	1200	1300	1400	1500
Double Tire/Special Double Tire	2W300	4500	4000		3400		2950		2600			2200
	2W330	4500	4000		3400		2950		2600			2200
	2W350	4500	4000		3400		2950		2600			2200
	2W370	4500	4000		3400		2950		2600			2200
	2W400	4500	4000		3400		2950		2600			2200
	2W450	4500	4000		3400		2950		2600			2200
	2W500	4500	4000		3400		2950		2600			2200
	2W530	4200	3950		3350		2900		2600			2200
	2W550	4000	3900		3300		2900		2550			2150
	2W600	3700	3700		3150		2750		2400			2050
	2F290	4500	4000		3400		2950		2600			2200
	2F300	4500	4000		3400		2950		2600			2200
	2F330	4500	4000		3400		2950		2600			2200
	2F370	4500	4000		3400		2950		2600			2200
	2F410	4500	4000		3400		2950		2600			2200
	3F370	4500	4000		3400		2950		2600			2200
	3F400	4500	4000		3400		2950		2600			2200
	3F430	4500	4000		3400		2950		2600			2200
	3F460	4500	4000		3400		2950		2600			2200
	3F470	4500	4000		3400		2950		2600			2200
	3F500	4500	4000		3400		2950		2600			2200
	3F530	4200	3900		3300		2900		2550			2150
	3F550	4000	3800		3200		2800		2500			2100
	3F600	3700	3700		3150		2750		2400			2050
	3F650	2900	2800		2350		2050		1800			1550
	3F700	2100	2100		1750		1550		1350			1150

F04-U

F04D45UT, F04D45UD, F04B45UT

Unit:kg

Load center		500mm	600	700	800	900	1000	1100	1200	1300	1400	1500
Mast name												
Single Tire	2W300	5000	4500		3800		3300		2950			2500
	2W330	5000	4500		3800		3300		2950			2500
	2W350	5000	4500		3800		3300		2950			2500
	2W370	5000	4500		3800		3300		2950			2500
	2W400	5000	4500		3800		3300		2950			2500
	2W450	5000	4500		3800		3300		2950			2500
	2W500	5000	4500		3800		3300		2950			2500
	2W530	3900	3900		3300		2900		2550			2150
	2W550	3600	3200		2700		2350		2100			1800
	2W600	2700	2500		2100		1850		1600			1400
	2F270	5000	4500		3800		3300		2950			2500
	2F300	5000	4500		3800		3300		2950			2500
	2F330	5000	4500		3800		3300		2950			2500
	2F350	5000	4500		3800		3300		2950			2500
	2F410	5000	4500		3800		3300		2950			2500
	3F370	5000	4500		3800		3300		2950			2500
	3F380	5000	4500		3800		3300		2950			2500
	3F400	5000	4500		3800		3300		2950			2500
	3F430	5000	4500		3800		3300		2950			2500
	3F450	5000	4500		3800		3300		2950			2500
	3F470	5000	4500		3800		3300		2950			2500
	3F500	5000	4500		3800		3300		2950			2500
	3F530	4500	4100		3500		3050		2700			2300
	3F550	3600	3200		2700		2350		2100			1800
	3F600	2700	2400		2000		1750		1550			1350
	3F650	2000	1800		1500		1300		1150			1000
	3F700	1500	1300		1100		950		850			700

F04D45UT, F04D45UD, F04B45UT

Unit:kg

Load center		500mm	600	700	800	900	1000	1100	1200	1300	1400	1500
Mast name												
Double Tire/Special Double Tire	2W300	5000	4500		3800		3300		2950			2500
	2W330	5000	4500		3800		3300		2950			2500
	2W350	5000	4500		3800		3300		2950			2500
	2W370	5000	4500		3800		3300		2950			2500
	2W400	5000	4500		3800		3300		2950			2500
	2W450	5000	4500		3800		3300		2950			2500
	2W500	5000	4500		3800		3300		2950			2500
	2W530	4600	4450		3750		3300		2900			2500
	2W550	4400	4400		3750		3250		2900			2450
	2W600	3700	3700		3150		2750		2400			2050
	2F270	5000	4500		3800		3300		2950			2500
	2F300	5000	4500		3800		3300		2950			2500
	2F330	5000	4500		3800		3300		2950			2500
	2F350	5000	4500		3800		3300		2950			2500
	2F410	5000	4500		3800		3300		2950			2500
	3F370	5000	4500		3800		3300		2950			2500
	3F380	5000	4500		3800		3300		2950			2500
	3F400	5000	4500		3800		3300		2950			2500
	3F430	5000	4500		3800		3300		2950			2500
	3F450	5000	4500		3800		3300		2950			2500
	3F470	5000	4500		3800		3300		2950			2500
	3F500	5000	4500		3800		3300		2950			2500
	3F530	4600	4400		3750		3250		2900			2450
	3F550	4400	4300		3650		3150		2800			2400
	3F600	3700	3700		3150		2750		2400			2050
	3F650	2900	2800		2350		2050		1800			1550
	3F700	2100	2100		1750		1550		1350			1150

F04D50UT, F04B50UT

Unit:kg

Load center Mast name		500mm	600	700	800	900	1000	1100	1200	1300	1400	1500
Single Tire	2W300		5000		4250		3700		3300			2800
	2W330		5000		4250		3700		3300			2800
	2W350		5000		4250		3700		3300			2800
	2W370		5000		4250		3700		3300			2800
	2W400		5000		4250		3700		3300			2800
	2W450		5000		4250		3700		3300			2800
	2W500		4700		4000		3450		3050			2600
	2W530		3900		3300		2900		2550			2150
	2W550		3200		2700		2350		2100			1800
	2W600		2500		2100		1850		1600			1400
	2F270		5000		4250		3700		3300			2800
	2F300		5000		4250		3700		3300			2800
	2F330		5000		4250		3700		3300			2800
	2F350		5000		4250		3700		3300			2800
	2F410		5000		4250		3700		3300			2800
	3F370		5000		4250		3700		3300			2800
	3F380		5000		4250		3700		3300			2800
	3F400		5000		4250		3700		3300			2800
	3F430		5000		4250		3700		3300			2800
	3F450		5000		4250		3700		3300			2800
	3F470		5000		4250		3700		3300			2800
	3F500		5000		4250		3700		3300			2800
	3F530		4500		3800		3300		2950			2500
	3F550		3200		2700		2350		2100			1800
	3F600		2400		2000		1750		1550			1350
	3F650		1800		1500		1300		1150			1000
	3F700		1300		1100		950		850			700

F04D50UT, F04B50UT

Unit:kg

Load center Mast name		500mm	600	700	800	900	1000	1100	1200	1300	1400	1500
Double Tire/Special Double Tire	2W300		5000		4250		3700		3300			2800
	2W330		5000		4250		3700		3300			2800
	2W350		5000		4250		3700		3300			2800
	2W370		5000		4250		3700		3300			2800
	2W400		5000		4250		3700		3300			2800
	2W450		5000		4250		3700		3300			2800
	2W500		5000		4250		3700		3300			2800
	2W530		4900		4150		3600		3150			2750
	2W550		4800		4050		3550		3150			2700
	2W600		3700		3150		2750		2400			2050
	2F270		5000		4250		3700		3300			2800
	2F300		5000		4250		3700		3300			2800
	2F330		5000		4250		3700		3300			2800
	2F350		5000		4250		3700		3300			2800
	2F410		5000		4250		3700		3300			2800
	3F370		5000		4250		3700		3300			2800
	3F380		5000		4250		3700		3300			2800
	3F400		5000		4250		3700		3300			2800
	3F430		5000		4250		3700		3300			2800
	3F450		5000		4250		3700		3300			2800
	3F470		5000		4250		3700		3300			2800
	3F500		5000		4250		3700		3300			2800
	3F530		4800		4050		3550		3150			2700
	3F550		4700		4000		3450		3050			2600
	3F600		3700		3150		2750		2400			2050
	3F650		2800		2350		2050		1800			1550
	3F700		2100		1750		1550		1350			1150

F04-U

Truck Weights

Mast type	Mast name	F04B40UT	F04D40UD	F04D40UT	F04B40HUT	F04D40HUD	F04D40HUT	F04B45UT	F04D45UD	F04D45UT	F04B50UT	F04D50UT
		Single tire	Single tire	Single tire	Single tire	Single tire	Single tire	Single tire	Single tire	Single tire	Single tire	Single tire
Two stage (Wide view 2W)	2W300	5570	5650	5670	5970	6050	6070	6530	6610	6630	7050	7150
	2W330	5600	5680	5700	6000	6080	6100	6570	6640	6660	7090	7180
	2W350	5620	5700	5720	6020	6100	6120	6590	6660	6690	7110	7200
	2W370	5640	5710	5730	6040	6110	6130	6610	6690	6710	7130	7220
	2W400	5670	5740	5770	6070	6150	6170	6660	6740	6760	7180	7270
	2W450	5770	5850	5870	6170	6250	6270	6760	6840	6860	7280	7370
	2W500	5820	5890	5910	6220	6300	6320	6820	6900	6920	7340	7430
	2W530	5830	5910	5930	6240	6310	6330	6840	6920	6940	7360	7450
	2W550	5860	5940	5960	6260	6340	6360	6880	6950	6970	7390	7490
2W600	5910	5990	6010	6310	6390	6410	6930	7010	7030	7450	7540	
Two stage (Full free 2F)	2F270	-	-	-	-	-	-	6520	6600	6620	7040	7130
	2F290	5580	5650	5670	5980	6060	6080	-	-	-	-	-
	2F300	5590	5670	5690	5990	6070	6090	6560	6630	6650	7070	7160
	2F330	5620	5700	5720	6020	6100	6120	6590	6670	6690	7100	7200
	2F350	-	-	-	-	-	-	6610	6690	6710	7130	7220
	2F370	5660	5730	5750	6060	6140	6160	-	-	-	-	-
	2F410	5690	5770	5790	6090	6170	6190	6690	6770	6790	7210	7300
Three stage (Full free 3F)	3F370	5780	5860	5880	6180	6260	6280	6790	6870	6890	7310	7400
	3F380	-	-	-	-	-	-	6810	6890	6910	7330	7420
	3F400	5810	5880	5910	6210	6290	6310	6840	6910	6930	7350	7440
	3F430	5840	5920	5940	6250	6320	6340	6870	6950	6970	7380	7470
	3F450	-	-	-	-	-	-	6890	6970	6990	7400	7500
	3F460	5870	5940	5970	6270	6350	6370	-	-	-	-	-
	3F470	5880	5950	5980	6280	6360	6380	6920	7000	7020	7430	7520
	3F500	5910	5990	6010	6310	6390	6410	6950	7030	7050	7470	7560
	3F530	5930	6010	6030	6340	6410	6430	6980	7060	7080	7490	7580
	3F550	5960	6030	6060	6360	6440	6460	7010	7080	7110	7520	7610
	3F600	6080	6160	6180	6480	6560	6580	7150	7220	7250	7660	7750
	3F650	6140	6210	6240	6540	6620	6640	7220	7290	7310	7730	7820
3F700	6190	6270	6290	6600	6670	6690	7290	7360	7380	7800	7890	
Truck weight without mast	4500	4570	4590	4900	4970	5000	5340	5420	5440	5730	5830	

Additional Truck Weights

Model (Capacity code)		4.0ton (L/C=500mm) 3.5ton (L/C=600mm) MODEL	4.0ton (L/C=600mm) MODEL	4.5ton (L/C=600mm) MODEL	5.0ton (L/C=600mm) MODEL
Front	Single (pneumatic)	±0	±0	±0	±0
	double (pneumatic)	+130	+80	+80	+80
	Special double (pneumatic)	+170	+120	+120	+120
	Single (solid)	+120	+220	+220	+220
	double (solid)	+310	+260	+260	+260
	Special double (solid)	+450	+400	+400	+400
Rear	Single (pneumatic)	±0	±0	±0	±0
	Single (solid)	+70	+60	+50	+50

Tire Availability

	4.0ton (L/C=500mm) 3.5ton (L/C=600mm) MODEL	4.0ton (L/C=600mm) MODEL	4.5ton (L/C=600mm) MODEL	5.0ton (L/C=600mm) MODEL
Standard single				
Wide single				
Double				
Special Double				

Option Availability

		...Standard ...Option N.A....Not Available											
Model	Model Code	F04B40UT	F04B40HUT	F04D40UT	F04D40HUT	F04D40UD	F04D40HUD	F04B45UT	F04B50UT	F04D45UT	F04D50UT	F04D45UD	
	Fuel type	Gasoline / (Option : LPG)	Gasoline / (Option : LPG)	Diesel	Diesel	Diesel	Diesel	Gasoline / (Option : LPG)	Gasoline / (Option : LPG)	Diesel	Diesel	Diesel	
Transmission	Type	Automatic	Automatic	Automatic	Automatic	Manual	Manual	Automatic	Automatic	Automatic	Automatic	Manual	
	Forward	1 (Option : 2)	1 (Option : 2)	1 (Option : 2)	1 (Option : 2)	2	2	1 (Option : 2)	2	1 (Option : 2)	2	2	
	Reverse	1 (Option : 2)	1 (Option : 2)	1 (Option : 2)	1 (Option : 2)	2	2	1 (Option : 2)	2	1 (Option : 2)	2	2	
Capacity		3,500/4,000 kg	4,000 kg	3,500/4,000 kg	4,000 kg	3,500/4,000 kg	4,000 kg	4,500 kg	5,000 kg	4,500 kg	5,000 kg	4,500 kg	
Load center		600/500 mm	600 mm	600/500 mm	600 mm	600/500 mm	600 mm	600 mm	600 mm	600 mm	600 mm	600 mm	
Lights	Head light												
	Front Turn Signal lamp												
	Rear Combination lamps	Stop											
		Turn Signal lamp											
	Reverse												
Meters	Water Temperature												
	Fuel Amount												
	Hour Meter												
	Speedometer												
Warning	Break Oil Warning												
	Engine Oil Pressure Warning												
	Transmission Oil Temperature Warning					---	---					---	
	Battery charge Warning												
	Air Cleaner Clogging Warning												
	Radiator Water Amount Warning												
Grow Light		---	---				---	---					
Hydraulic Control	Valve	2 SV	2 SV	2 SV	2 SV	2 SV	2 SV	2 SV	2 SV	2 SV	2 SV	2 SV	
	Control Lever	Double Type											
Single Type													
Mast	Type	Wide View (2W)	Wide View (2W)	Wide View (2W)	Wide View (2W)	Wide View (2W)	Wide View (2W)	Wide View (2W)	Wide View (2W)	Wide View (2W)	Wide View (2W)	Wide View (2W)	
	Max. fork height	3,000 mm	3,000 mm	3,000 mm	3,000 mm	3,000 mm	3,000 mm	3,000 mm	3,000 mm	3,000 mm	3,000 mm	3,000 mm	
Tire	Front	Type	U-Lug Single	J-Lug Single	U-Lug Single	J-Lug Single	U-Lug Single	J-Lug Single	U-Lug Single	J-Lug Single	U-Lug Single	J-Lug Single	
		Size	8.25-15-12PR(I)	300-15-18PR(I)	8.25-15-12PR(I)	300-15-18PR(I)	8.25-15-12PR(I)	300-15-18PR(I)	300-15-18PR(I)	300-15-18PR(I)	300-15-18PR(I)	300-15-18PR(I)	
	Rear	Type	U-Lug	J-Lug	U-Lug	J-Lug	U-Lug	J-Lug	J-Lug	J-Lug	J-Lug	J-Lug	J-Lug
		Size	7.00-12-12PR(I)	7.00-12-12PR(I)	7.00-12-12PR(I)	7.00-12-12PR(I)	7.00-12-12PR(I)	7.00-12-12PR(I)	7.00-12-12PR(I)	7.00-12-14PR(I)	7.00-12-12PR(I)	7.00-12-14PR(I)	7.00-12-14PR(I)
Carriage	Width	1,190 mm	1,190 mm	1,190 mm	1,190 mm	1,190 mm	1,190 mm	1,190 mm	1,190 mm	1,190 mm	1,190 mm		
Backrest	Height	1,080 mm	1,080 mm	1,080 mm	1,080 mm	1,080 mm	1,080 mm	1,080 mm	1,230 mm	1,080 mm	1,230 mm	1,080 mm	
Forks	Type	Hook type	Hook type	Hook type	Hook type	Hook type	Hook type	Hook type	Hook type	Hook type	Hook type	Hook type	
	Length	1070 mm	1070 mm	1070 mm	1070 mm	1070 mm	1070 mm	1070 mm	1220 mm	1070 mm	1220 mm	1070 mm	
Steering	Type	Full Hydraulic power steering	Full Hydraulic power steering	Full Hydraulic power steering	Full Hydraulic power steering	Full Hydraulic power steering	Full Hydraulic power steering	Full Hydraulic power steering	Full Hydraulic power steering	Full Hydraulic power steering	Full Hydraulic power steering	Full Hydraulic power steering	
Seat	Type	Restraint seat with suspension	Restraint seat with suspension	Restraint seat with suspension	Restraint seat with suspension	Restraint seat with suspension	Restraint seat with suspension	Restraint seat with suspension	Restraint seat with suspension	Restraint seat with suspension	Restraint seat with suspension	Restraint seat with suspension	
Others	Back-up Buzzer												
	Rain Guard												
	Rear View Mirrors												
	Tool Kit	N.A.	N.A.	N.A.	N.A.	N.A.	N.A.	N.A.	N.A.	N.A.	N.A.	N.A.	