

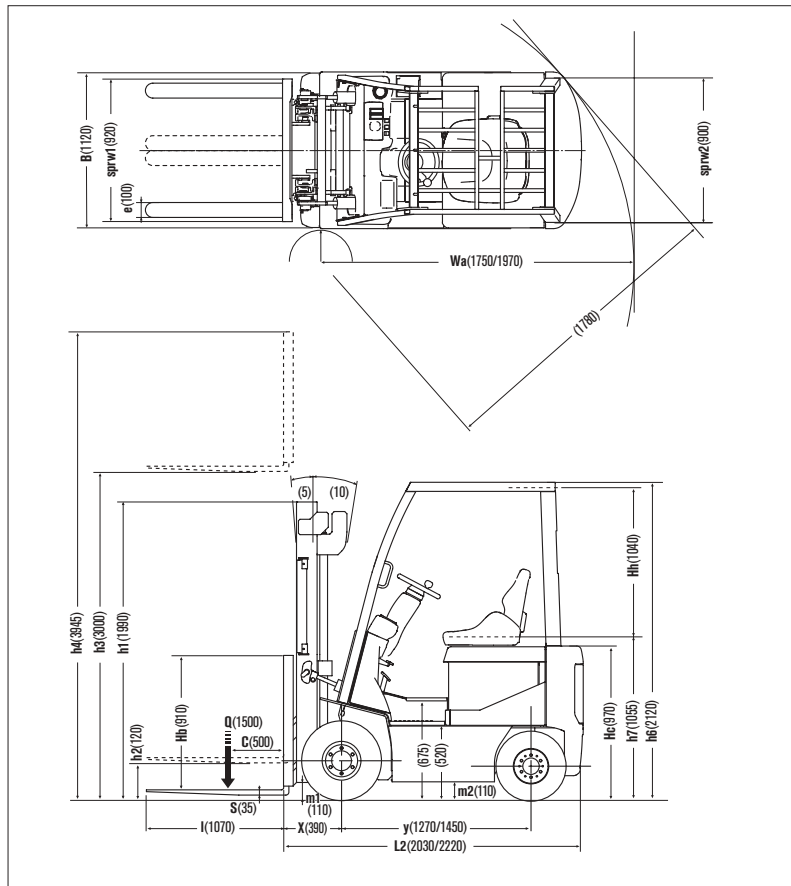
1B1 U-model

1.5

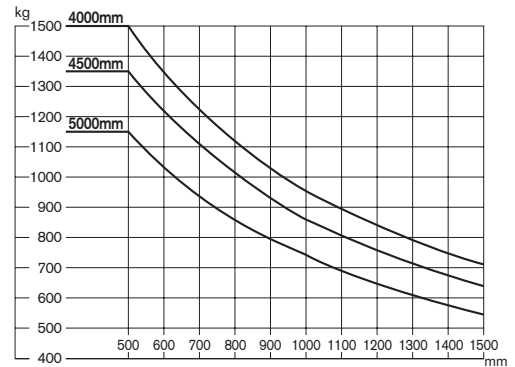
1.8ton
at 500mm
Load Center

1B1-U

Dimensions



Load Capacity Chart



No capacity reduction until 4000 mm height. Load capacities are computed with following conditions, a) Standard 2W Mast and b) Mast in vertical position.

Tire and Tread Specifications

Front Tire	single	double
Front Tire Size	21 x 8-9-10PR	6.00-9-10PR
Overall Width mm	1120	1430
Front Tread mm	920	1070

Ground Clearance

Under mast	mm	110	110
Under frame	mm	110	110

Mast Specifications & Rated Capacities

K1B1L15U, K1B1R15U, KG1B1L15U

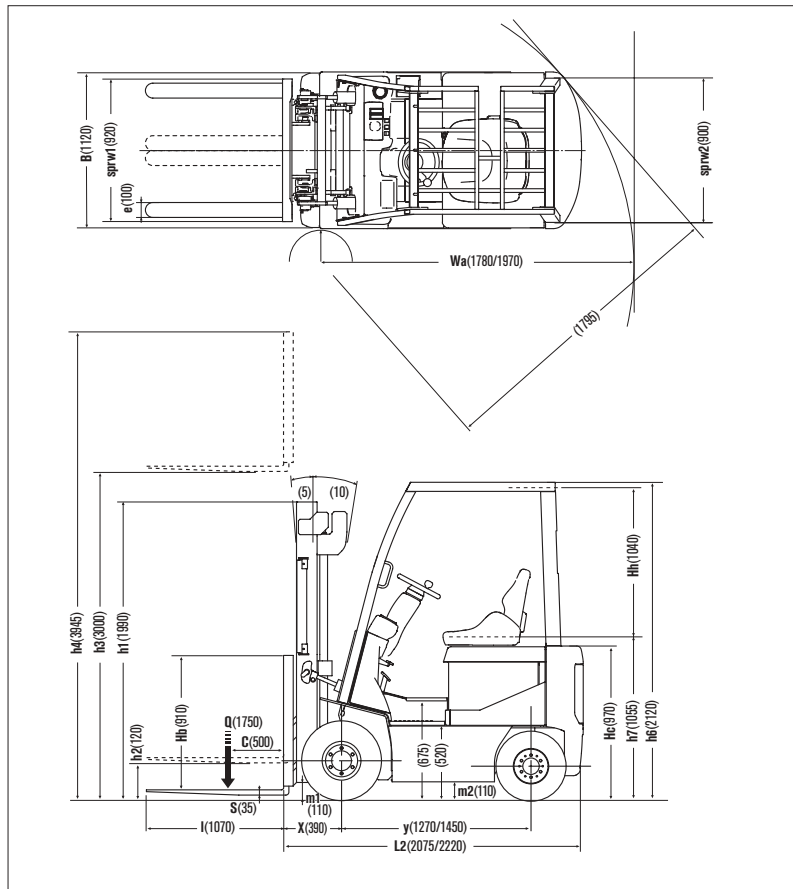
Mast type	Mast name	Max. fork Height mm	Overall height			Free lift		Front overhang mm	Tilt angle Forward/ Backward deg	Capacity Single tire Load center 500mm Kg
			Fully lowered mm	Fully extended		Without backrest mm	With STD backrest mm			
				Without backrest mm	With STD backrest mm					
Two stage (Wide view 2W)	2W270	2700	1840	3225	3645	120	120	390	5/10	1500
	2W300	3000	1990	3525	3945					1500
	2W330	3300	2140	3825	4245					1500
	2W350	3500	2275	4025	4445					1500
	2W370	3700	2400	4225	4645					1500
	2W400	4000	2590	4525	4945					1500
	2W450	4500	2840	5025	5445					1350
	2W500	5000	3090	5525	5945					1150
Two stage (Full free 2F)	2F270	2700	1840	3225	3645	1315	895	390	5/10	1500
	2F300	3000	1990	3525	3945	1465	1045			1500
	2F330	3300	2140	3825	4245	1615	1195			1500
	2F350	3500	2275	4025	4445	1750	1330			1500
	2F370	3700	2400	4225	4645	1875	1455			1500
	2F400	4000	2590	4525	4945	2065	1645			1500
	2F450	4500	2840	5025	5445					
Three stage (Full free 3F)	3F385	3850	1840	4380	4795	1310	895	395	5/5	1500
	3F430	4300	1990	4830	5245	1460	1045			1400
	3F475	4750	2140	5280	5695	1610	1195			1300
	3F515	5150	2275	5685	6100	1745	1330			1050
	3F550	5500	2400	6030	6445	1870	1455			850
	3F600	6000	2590	6530	6945	2060	1645			650

Main Truck Specifications

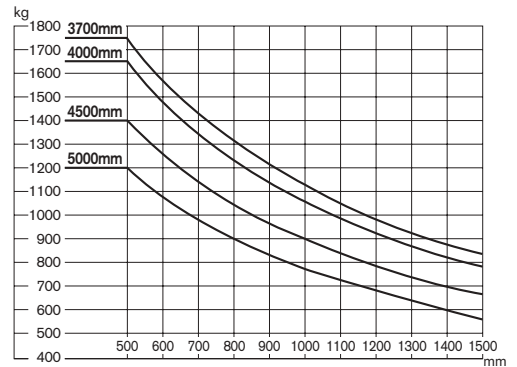
		Item			K1B1L15U	K1B1R15U	KG1B1L15U			
SPECIFICATIONS	1	Manufacturer			NISSAN	NISSAN	NISSAN	1		
	2	Model			K1B1L15U	K1B1R15U	KG1B1L15U	2		
	3	Load capacity	Q	Load lifted	kg	1500	1500	1500	3	
	4	Load center	C	Distance	mm	500	500	500	4	
	5	Power unit		Battery, diesel, Gasoline, LP gas		BAT	BAT	BAT	5	
	6	Operator type		Walkie, rider/stand, rider/seat		Rider / seat	Rider / seat	Rider / seat	6	
	7	Tire type			front/rear	P(SE) / P(SE)	P(SE) / P(SE)	P(SE) / P(SE)	7	
	8	Wheels(X=driven)		Number	front/rear	2 x / 2	2 x / 2	2 x / 2	8	
DIMENSIONS	9	Maximum fork height	h3	Standard lift height	mm	3000	3000	3000	9	
	10	Free lift	h2	Standard free lift	mm	120	120	120	10	
	13	Fork size		s.e.l	mm	35 x 100 x 1070	35 x 100 x 1070	35 x 100 x 1070	13	
		Max. Fork Spread			mm	900	900	900		
		Min. Fork Spread			mm	205	205	205		
	14	Tilt range	/	Mast forward/backward	deg	5 / 10	5 / 10	5 / 10	14	
	15	Overall measurement	L2	Length to fork face	mm	2030	2030	2220	15	
	16		B	Overall width	mm	1120	1120	1120	16	
	17		h1	Height mast retracted	mm	1990	1990	1990	17	
	18		h4	Height mast extended	mm	3945	3945	3945	18	
	19		h6	Height overhead guard	mm	2120	2120	2120	19	
	20		h7	Height of driver's seat	mm	1055	1055	1055	20	
	21	Turning radius (outside)	Wa		mm	1750	1750	1970	21	
	22	Load distance	X	From center of front axle	mm	390	390	390	22	
23	Right angle stacking aisle		Ast pallets (L x W) 1200 x 800/1000 x 1200	mm	3540 / 3340	3540 / 3340	3760 / 3560	23		
PERFORMANCE	24	Speeds	Travelling	full load	km/h	16	16	16	24	
	no load			km/h	18	18	17.5			
	Lifting		full load	mm/s	435	435	435	25		
			no load	mm/s	640	640	640			
	Lowering		full load	mm/s	500	500	500	26		
			no load	mm/s	500	500	500			
28	Max. drawber pull		full/no load	N	10770 / 10770	10770 / 10770	10770 / 10770	28		
29	Gradeability at 2km/h		full/no load	%	22 / 34	21 / 32	20 / 30.5	29		
30	Max. gradeability		full/no load	%	-	-	-	30		
WEIGHTS	32	Truck weight		no load	kg	2980	3060	3205	32	
	33	Weight distribution		full load	front/rear	kg	3850 / 630	3885 / 675	3855 / 850	33
				no load	front/rear	kg	1280 / 1700	1320 / 1740	1420 / 1785	34
CHASSIS & WHEELS	35	Tires		Number.	front/rear	each	2 / 2	2 / 2	2 / 2	35
	36			Size-front			21 x 8-9-10PR	21 x 8-9-10PR	21 x 8-9-10PR	36
	37			Size-rear			5.00-8-10PR	5.00-8-10PR	5.00-8-10PR	37
	38	Wheelbase	y		mm	1270	1270	1450	38	
	39	Tread	sprw	1/sprw 2	front/rear	mm	920 / 900	920 / 900	920 / 900	39
		Backrest height	Hb	top of backrest - upper of fork face	mm	910	910	910		
		Overhead guard clearance	Hh		mm	1040	1040	1040		
		Counter weight height	Hc		mm	970	970	970		
	40	Ground clearance	m1	Full load minimum	mast	mm	110	110	110	40
	41		m2	Full load center of wheelbase		mm	110	110	110	41
42	Service brake		Mechanical/hydraulic/electric/pneu			Hyd / Elec	Hyd / Elec	Hyd / Elec	42	
43	Parking brake		Foot/hand/seat switch			Foot	Foot	Foot	43	
DRIVE LINE	45	Battery	Voltage/Capacity (5 hour)	min	V/AH	48 / 485	48 / 545	48 / 600	45	
	max			V/AH	-	-	48 / 700			
	46		weight(STD capacity type)	min-max	kg	765	845	940-1095	46	
	47		drive		KW	9	9	9	47	
	48	Electric motors		Load handling	KW	11	11	11	48	
				Power steering	KW	-	-	-		
	54	Control type		drive			MOD-INV	MOD-INV	MOD-INV	54
			Load handling			MOD-INV	MOD-INV	MOD-INV		
			Power steering			-	-	-		
57	Operating pressure		for attachment	MPa	12.7	12.7	12.7	57		

1B1-U

Dimensions



Load Capacity Chart



No capacity reduction until 3700 mm height. Load capacities are computed with following conditions, a) Standard 2W Mast and b) Mast in vertical position.

Tire and Tread Specifications

Front Tire	single	double
Front Tire Size	21 x 8-9-10PR	6.00-9-10PR
Overall Width mm	1120	1430
Front Tread mm	920	1070

Ground Clearance

Under mast mm	110	110
Under frame mm	110	110

Mast Specifications & Rated Capacities

K1B1L18U/FU, K1B1R18U, KG1B1L18U

Mast type	Mast name	Max. fork Height mm	Overall height			Free lift		Front overhang mm	Tilt angle Forward/ Backward deg	Capacity Single tire Load center 500mm Kg	
			Fully lowered mm	Fully extended		Without backrest mm	With STD backrest mm				
				Without backrest mm	With STD backrest mm						
Two stage (Wide view 2W)	2W270	2700	1840	3330	3645	120	120	390	5/10	1750	
	2W300	3000	1990	3630	3945					1750	
	2W330	3300	2140	3930	4245					1750	
	2W350	3500	2275	4130	4445					1750	
	2W370	3700	2400	4330	4645					1750	
	2W400	4000	2590	4630	4945					1650	
	2W450	4500	2840	5130	5445					5/5	1400
	2W500	5000	3090	5630	5945						1200
Two stage (Full free 2F)	2F270	2700	1840	3330	3645	1210	895	390	5/10	1750	
	2F300	3000	1990	3630	3945	1360	1045			1750	
	2F330	3300	2140	3930	4245	1510	1195			1750	
	2F350	3500	2275	4130	4445	1645	1330			1750	
	2F370	3700	2400	4330	4645	1770	1455			1750	
	2F400	4000	2590	4630	4945	1960	1645			1650	
	Three stage (Full free 3F)	3F385	3850	1840	4480	4795	1210			895	395
3F430		4300	1990	4930	5245	1360	1045	1550			
3F475		4750	2140	5380	5695	1510	1195	1350			
3F515		5150	2275	5785	6100	1645	1330	1100			
3F550		5500	2400	6130	6445	1770	1455	850			
3F600		6000	2590	6630	6945	6945	1960	1645	850		
									650		

Main Truck Specifications

		Item			K1B1L18U/FU	K1B1R18U	KG1B1L18U			
SPECIFICATIONS	1	Manufacturer			NISSAN	NISSAN	NISSAN	1		
	2	Model			K1B1L18U / FU	K1B1R18U	KG1B1L18U	2		
	3	Load capacity	Q	Load lifted	kg	1750	1750	1750	3	
	4	Load center	C	Distance	mm	500	500	500	4	
	5	Power unit	Battery, diesel, Gasoline, LP gas			BAT	BAT	BAT	5	
	6	Operator type	Walkie, rider/stand, rider/seat			Rider / seat	Rider / seat	Rider / seat	6	
	7	Tire type				P(SE) / P(SE)	P(SE) / P(SE)	P(SE) / P(SE)	7	
	8	Wheels(X=driven)	Number			2 x / 2	2 x / 2	2 x / 2	8	
DIMENSIONS	9	Maximum fork height	h3	Standard lift height	mm	3000	3000	3000	9	
	10	Free lift	h2	Standard free lift	mm	120	120	120	10	
	13	Fork size	s.e.l			mm	35 x 100 x 1070	35 x 100 x 1070	35 x 100 x 1070	13
		Max. Fork Spread				mm	900	900	900	
		Min. Fork Spread				mm	205	205	205	
	14	Tilt range	/	Mast forward/backward		deg	5 / 10	5 / 10	5 / 10	14
	15	Overall measurement	L2	Length to fork face		mm	2075	2075	2220	15
	16		B	Overall width		mm	1120	1120	1120	16
	17		h1	Height mast retracted		mm	1990	1990	1990	17
	18		h4	Height mast extended		mm	3945	3945	3945	18
	19		h6	Height overhead guard		mm	2120	2120	2120	19
	20		h7	Height of driver's seat		mm	1055	1055	1055	20
	21	Turning radius (outside)	Wa			mm	1780	1780	1970	21
	22	Load distance	X	From center of front axle		mm	390	390	390	22
23	Right angle stacking aisle	Ast pallets (L x W) 1200 x 800/1000 x 1200			mm	3570 / 3370	3570 / 3370	3760 / 3560	23	
PERFORMANCE	24	Speeds	Travelling	full load	km/h	16	16	16	24	
	no load			km/h	18	17.5	17.5			
	Lifting		full load	mm/s	390	390	390			
			no load	mm/s	640	640	640			
	Lowering		full load	mm/s	500		500			
			no load	mm/s	500		500			
28	Max. drawber pull	full/no load			N	10770 / 10770	10770 / 10770	10770 / 10770	28	
29	Gradeability at 2km/h	full/no load			%	19 / 32	19 / 30	19 / 30	29	
30	Max. gradeability	full/no load			%	-	-	-	30	
WEIGHTS	32	Truck weight	no load			kg	3170	3245	3205	32
	33	Weight distribution	full load		front/rear	kg	4240 / 680	4270 / 725	4260 / 695	33
			no load		front/rear	kg	1245 / 1925	1275 / 1970	1420 / 1785	34
	35		Number.	front/rear		each	2 / 2	2 / 2	2 / 2	35
36	Tires	Size-front				21 x 8-9-10PR		21 x 8-9-10PR	36	
		Size-rear				5.00-8-10PR	5.00-8-10PR	5.00-8-10PR	37	
		Wheelbase			y	mm	1270	1270	1450	38
39	Tread	sprw	1/sprw 2		front/rear	mm	920 / 900	920 / 900	920 / 900	39
	Backrest height	Hb	top of backrest - upper of fork face			mm	910	910	910	
	Overhead guard clearance	Hh				mm	1040	1040	1040	
	Counter weight height	Hc				mm	970	970	970	
40	Ground clearance	m1	Full load minimum		mast	mm	110	110	110	40
		m2	Full load center of wheelbase			mm	110	110	110	41
42	Service brake	Mechanical/hydraulic/electric/pneu				Hyd / Elec	Hyd / Elec	Hyd / Elec	42	
43	Parking brake	Foot/hand/seat switch				Foot	Foot	Foot	43	
DRIVE LINE	45	Battery	Voltage/Capacity		min	V/AH	48 / 485	48 / 545	48 / 600	45
			(5 hour)		max	V/AH	-	-	48 / 700	
	46		weight(STD capacity type)		min-max	kg	765	845	940-1095	46
	47		drive			KW	9	9	9	47
	48	Electric motors	Load handling			KW	11	11	11	48
			Power steering			KW	-	-	-	
	54		drive				MOD-INV	MOD-INV	MOD-INV	54
	Control type	Load handling				MOD-INV	MOD-INV	MOD-INV		
		Power steering				-	-	-		
57	Operating pressure	for attachment			MPa	12.7	12.7	12.7	57	

1B1-U

Loading Capacity

K1B1L15U, K1B1R15U, KG1B1L15U

Unit:kg

Mast name	Load center	500mm	600	700	800	900	1000	1100	1200	1300	1400	1500
Single tire	2W 270	1500	1350	1225	1125	1035	965	900	845	795	750	710
	2W 300	1500	1350	1225	1125	1035	965	900	845	795	750	710
	2W 330	1500	1350	1225	1125	1035	965	900	845	795	750	710
	2W 350	1500	1350	1225	1125	1035	965	900	845	795	750	710
	2W 370	1500	1350	1225	1125	1035	965	900	845	795	750	710
	2W 400	1500	1350	1225	1125	1035	965	900	845	795	750	710
	2W 450	1350	1215	1105	1010	935	865	810	760	715	675	640
	2W 500	1150	1035	940	860	795	740	690	645	610	575	545
	2F 270	1500	1345	1220	1120	1030	960	895	835	785	745	705
	2F 300	1500	1345	1220	1120	1030	960	895	835	785	745	705
	2F 330	1500	1345	1220	1120	1030	960	895	835	785	745	705
	2F 350	1500	1345	1220	1120	1030	960	895	835	785	745	705
	2F 370	1500	1345	1220	1120	1030	960	895	835	785	745	705
	2F 400	1500	1345	1220	1120	1030	960	895	835	785	745	705
	3F 385	1500	1345	1225	1120	1035	960	895	840	790	745	705
	3F 430	1400	1255	1140	1045	965	895	835	785	735	695	660
	3F 475	1300	1165	1060	970	895	830	775	725	685	645	610
	3F 515	1050	940	855	785	725	670	625	585	550	520	495
	3F 550	850	760	690	635	585	545	505	475	445	420	400
	3F 600	650	580	530	485	445	415	385	360	340	320	305
Double tire	2W 270	1500	1350	1225	1125	1035	965	900	845	795	750	710
	2W 300	1500	1350	1225	1125	1035	965	900	845	795	750	710
	2W 330	1500	1350	1225	1125	1035	965	900	845	795	750	710
	2W 350	1500	1350	1225	1125	1035	965	900	845	795	750	710
	2W 370	1500	1350	1225	1125	1035	965	900	845	795	750	710
	2W 400	1500	1350	1225	1125	1035	965	900	845	795	750	710
	2W 450	1400	1260	1145	1050	970	900	840	785	740	700	660
	2W 500	1300	1170	1060	975	900	835	780	730	685	650	615
	2F 270	1500	1345	1220	1120	1030	960	895	835	785	745	705
	2F 300	1500	1345	1220	1120	1030	960	895	835	785	745	705
	2F 330	1500	1345	1220	1120	1030	960	895	835	785	745	705
	2F 350	1500	1345	1220	1120	1030	960	895	835	785	745	705
	2F 370	1500	1345	1220	1120	1030	960	895	835	785	745	705
	2F 400	1500	1345	1220	1120	1030	960	895	835	785	745	705
	3F 385	1500	1345	1225	1120	1035	960	895	840	790	745	705
	3F 430	1400	1255	1140	1045	965	895	835	785	735	695	660
	3F 475	1300	1165	1060	970	895	830	775	725	685	645	610
	3F 515	1250	1120	1020	935	860	800	745	700	660	620	590
	3F 550	1150	1030	935	860	790	735	685	645	605	570	540
	3F 600	1000	895	815	745	690	640	595	560	525	495	470

Loading Capacity

K1B1L18(F)U, K1B1R18U, KG1B1L18U

Unit:kg

Mast name	Load center	500mm	600	700	800	900	1000	1100	1200	1300	1400	1500
Single tire	2W 270	1750	1575	1430	1310	1210	1125	1050	985	925	875	830
	2W 300	1750	1575	1430	1310	1210	1125	1050	985	925	875	830
	2W 330	1750	1575	1430	1310	1210	1125	1050	985	925	875	830
	2W 350	1750	1575	1430	1310	1210	1125	1050	985	925	875	830
	2W 370	1750	1575	1430	1310	1210	1125	1050	985	925	875	830
	2W 400	1650	1485	1350	1235	1140	1060	990	925	875	825	780
	2W 450	1400	1260	1145	1050	970	900	840	785	740	700	660
	2W 500	1200	1080	980	900	830	770	720	675	635	600	565
	2F 270	1750	1570	1425	1305	1205	1120	1040	975	920	865	820
	2F 300	1750	1570	1425	1305	1205	1120	1040	975	920	865	820
	2F 330	1750	1570	1425	1305	1205	1120	1040	975	920	865	820
	2F 350	1750	1570	1425	1305	1205	1120	1040	975	920	865	820
	2F 370	1750	1570	1425	1305	1205	1120	1040	975	920	865	820
	2F 400	1650	1480	1345	1230	1135	1055	985	920	865	815	775
	3F 385	1650	1480	1345	1235	1140	1055	985	925	870	820	775
	3F 430	1550	1390	1265	1160	1070	990	925	865	815	770	730
	3F 475	1350	1210	1100	1010	930	865	805	755	710	670	635
	3F 515	1100	985	895	820	760	705	655	615	580	545	515
	3F 550	850	760	690	635	585	545	505	475	445	420	400
	3F 600	650	580	530	485	445	415	385	360	340	320	305
Double tire	2W 270	1750	1575	1430	1310	1210	1125	1050	985	925	875	830
	2W 300	1750	1575	1430	1310	1210	1125	1050	985	925	875	830
	2W 330	1750	1575	1430	1310	1210	1125	1050	985	925	875	830
	2W 350	1750	1575	1430	1310	1210	1125	1050	985	925	875	830
	2W 370	1750	1575	1430	1310	1210	1125	1050	985	925	875	830
	2W 400	1650	1485	1350	1235	1140	1060	990	925	875	825	780
	2W 450	1500	1350	1225	1125	1035	965	900	845	795	750	710
	2W 500	1350	1215	1105	1010	935	865	810	760	715	675	640
	2F 270	1750	1570	1425	1305	1205	1120	1040	975	920	865	820
	2F 300	1750	1570	1425	1305	1205	1120	1040	975	920	865	820
	2F 330	1750	1570	1425	1305	1205	1120	1040	975	920	865	820
	2F 350	1750	1570	1425	1305	1205	1120	1040	975	920	865	820
	2F 370	1750	1570	1425	1305	1205	1120	1040	975	920	865	820
	2F 400	1650	1480	1345	1230	1135	1055	985	920	865	815	775
	3F 385	1650	1480	1345	1235	1140	1055	985	925	870	820	775
	3F 430	1600	1435	1305	1195	1105	1025	955	895	840	795	755
	3F 475	1500	1345	1225	1120	1035	960	895	840	790	745	705
	3F 515	1350	1210	1100	1010	930	865	805	755	710	670	635
	3F 550	1200	1075	980	895	825	765	715	670	630	595	565
	3F 600	1000	895	815	745	690	640	595	560	525	495	470

1B1-U

Truck Weight (Less Battery)

Mast type	Mast name	K1B1L15U		K1B1R15U		KG1B1L15U		K1B1L18U/FU		K1B1R18U		KG1B1L18U	
		SINGLE	DOUBLE	SINGLE	DOUBLE	SINGLE	DOUBLE	SINGLE	DOUBLE	SINGLE	DOUBLE	SINGLE	DOUBLE
Two stage (Wide view 2W)	2W270	2200	2235	2195	2230	2245	2280	2385	2420	2385	2420	2245	2280
	2W300	2215	2255	2215	2250	2265	2300	2405	2440	2400	2435	2265	2300
	2W330	2235	2270	2235	2270	2280	2315	2420	2460	2420	2455	2285	2320
	2W350	2255	2290	2250	2285	2300	2335	2440	2475	2440	2475	2300	2335
	2W370	2290	2325	2285	2320	2335	2370	2475	2510	2475	2510	2335	2370
	2W400	2310	2350	2310	2345	2360	2395	2500	2535	2495	2530	2360	2395
	2W450	2345	2380	2345	2380	2390	2425	2530	2565	2530	2565	2395	2430
	2W500	2375	2410	2375	2410	2420	2455	2560	2600	2560	2595	2425	2460
Two stage (Full free 2F)	2F270	2210	2245	2205	2240	2255	2290	2400	2435	2395	2430	2260	2295
	2F300	2230	2265	2225	2260	2275	2310	2420	2455	2415	2450	2280	2315
	2F330	2250	2285	2245	2285	2295	2330	2440	2475	2435	2475	2300	2335
	2F350	2265	2300	2265	2300	2315	2350	2455	2495	2455	2490	2320	2355
	2F370	2305	2340	2300	2335	2350	2385	2495	2530	2490	2525	2355	2390
	2F400	2330	2365	2330	2365	2375	2410	2520	2555	2520	2555	2380	2415
Three stage (Full free 3F)	3F385	2380	2415	2380	2415	2425	2460	2570	2605	2565	2600	2430	2465
	3F430	2410	2445	2410	2445	2455	2490	2600	2635	2595	2630	2460	2495
	3F475	2440	2475	2440	2475	2485	2520	2625	2665	2625	2660	2490	2525
	3F515	2465	2500	2465	2500	2510	2545	2655	2690	2655	2690	2515	2550
	3F550	2520	2555	2515	2550	2565	2600	2705	2740	2705	2740	2570	2605
	3F600	2555	2590	2555	2590	2600	2635	2745	2780	2745	2780	2605	2640
Truck weight without mast		1700	1740	1700	1735	1750	1785	1885	1920	1885	1920	1750	1785

Additional Truck Weight

Tire Weight

Model (Capacity code)		15,18 -U	
Front	Single	Pneumatic tire	0
		Pneumatic type solid tire	+50
	Double	Pneumatic tire	0
		Pneumatic type solid tire	+70
Rear	Single	Pneumatic tire	0
		Pneumatic type solid tire	+20

Cabin

	15,18 -U
Windshild Glass	+25
Canvas Cabin	+30

Smooth-Run System

	15,18 -U
Goodrun	+15

Carriage & Backrest

Carriage	Backrest	15,18 -U
Standard	High	+10
	Less	-20
Wide	Wide & High	+40

Forks

Lengh mm (in)		Model	15,18 -U
Fork	Less fork		-80
	850 (33.5)		-10
	920 (36.2)		-10
	1000 (39.4)		-5
	1070 (42.1)		0
	1150 (45.3)		+5
	1220 (48.0)		+5
	1370 (53.9)		+15

Supplement Data

Standard Specifications

Item	Model			1B1
MOTOR	Traction motor	Type		AC induction
	Hoist pump motor	Type		AC induction
	P.S. motor	Type		

High travel speed/High lifting speed model specifications

Item	Model				K1B1L15U K1B1R15U	KG1B1L15U	K1B1L18U K1B1L18FU	K1B1R18U KG1B1L18U
PERFORMANCE	Travel speed	Forward	full load	km/h	16.0	16.0	16.0	16.0
			no load	km/h	18.0	17.5	18.0	17.5
	Lifting Speed	2W mast	full load	mm/sec	435	435	390	390
			no load	mm/sec	640	640	640	640

Right Angle Stacking Aisle [Ast] Mast 2W

Unit:mm

Pallet size length (b) x width	Model	K1B1L15U	K1B1R15U	KG1B1L15U	K1B1L18U	K1B1R18U	KG1B1L18U
	1000 x 1200		3340	3340	3560	3370	3370
1200 x 800		3540	3540	3760	3570	3570	3760

Fork Availability

...Standard ...Option

Length mm (in)		Model	15,18-U
Fork	Less fork		
	850		
	920		
	1000		
	1070		
	1150		
	1220		
	1370		
	1520		
Extension fork	1000		
	1100		
	1200		
	1300		
	1500		
	1700		
	1800		
2000			

1B1-U

Option Availability

...Standard ...Option

Item		1B1-U
Battery	Less battery	
	Battery (Wet type)	
	Spare battery (Dry type)	
	Battery case	
	Battery connector	EC type Standard type
Battery charger	Microcomputer-controlled one-touch charger	OFF-truck type ON-truck type
Instruments	Liquid crystal display	Battery capacity meter
		Hour meter
		Digital clock
		Warning display
		Speedometer
Warning buzzer	Back-up buzzer	
	Parking brake warning buzzer	
Light	Head lights (without guard)	
	Turn signal lamps	
	Rear combination lamps	
	Rear working lamp	
Tires	Rib-lug tire	
	J-lug tire (Textile)	
	Pneumatic type solid tire	
	Double tire	
	Cushion tire	
	Wide tread	
Body	Floor mat	
	Rain guard	
	Rearview mirror	
Seat	Hip support seat	
Loading mechanism	2W mast	
	2F mast	
	3F mast	
	Mast less	
	Wide carriage	
	High backrest	
	Wide and high backrest	
	Backrest less	
	Tilt cylinder boots	
	Long fork	
	Extension fork	
	Fork less	
	Smooth-Run System	
Hydraulic system	2 spool valve	
	3 spool valve	
	4 spool valve	
	Single control lever	
	Double control lever	
	3 spool piping to carriage	
4 spool piping to carriage		
Tool	Tool kit	
	Tool kit with jack	
Label	English	
	German	
	French	
	Spanish	
Attachment	Side shift (3 spool)	
	Rotating fork (3 spool)	
	Rotating clamp (4 spool)	
	Fork positioner (4 spool)	
F/R lever	Right-side F/R lever	

Fork Dimensions

	Width [W] x Thickness [T] mm (in)	
	1B1U 15	1B1U 18
850 (33.5)	100 x 35	100 x 35
920 (36.2)	100 x 35	100 x 35
1000 (39.4)	100 x 35	100 x 35
1070 (42.1)	100 x 35	100 x 35
1150 (45.3)	100 x 35	100 x 35
1220 (48.0)	100 x 35	100 x 38
1370 (53.9)	100 x 35	100 x 38
1520 (59.8)	100 x 38	100 x 38

Carriage & Backrest Dimensions

Carriage

Model		1B1 15	1B1 18
Class		Class	Class
Number of rollers		4	6
Carriage width [W] mm	Standard	920	920
	Wide	1335	1335
Max. fork spread mm	Standard	900	900
	Wide	1315	1315

Backrest

Model		1B1U 15-18
Backrest height [H] mm	Standard	945
	High backrest	1255
	Wide backrest	1255
Backrest width [L] ww	Standard High	945
	Wide backrest	1360
Plate thickness [T] mm		12

1B1-U

Tire Size

		Model	PK1B1		
Tire			15-18		
Front	Single	Tire size (STD)		21 x 8-9-10PR()	
		Rim size (STD)		6.00E x 9TB()	
		Type	J-lug textile		
			Rib-lug tire		
	Pneumatic type solid		21 x 8-9/6.00 SOLID		
	Double	Tire size (STD)		6.00-9-10PR()	
		Rim size (STD)		4.00E x 9DT()	
		Type	J-lug textile		
Rib-lug tire					
Pneumatic type solid			6.00-9/4.00 SOLID		
Rear	Single	Tire size (STD)		5.00-8-10PR()	
		Rim size (STD)		3.00D x 8DT()	
		Type	Rib-lug tire		
			Pneumatic type solid		5.00-8/3.00 SOLID

Tool Option

		1B1	
Tool set	Wrench	8 x 10	
		10 x 12	
		12 x 14	
		14 x 17	
		13 x 17	
	Screwdrivers		
	Wheel nut wrench		
	Thermometer		
	Gravi-meter		
	Puller		
	Tool bag		
Jack		*	

* Jack is available by separate request.

Battery Selection Guide

Battery and Battery Case Specifications

Unit:kg

		K1B1L15U K1B1L18U K1B1L18FU	K1B1R15U K1B1R18U	KG1B1L15U KG1B1L18U
Voltage	V	48	48	48
Number of cells		24	24	24
Capacity	Ah/5h	485	545	600
Battery weight kg	Dry cell	514	562	600
	Battery case	71	76	118
	Electrolyte	153	180	194
	Others*	27	27	28
	Total	765	845	940
Electrolyte quantity	liter	115	130	183
Battery connector type	General	Anderson SB 175(Gray)	Anderson SB 175(Gray)	Anderson SB 350(Gray)
	CE area	Anderson SBE 160(Blue)	Anderson SBE 160(Blue)	Anderson SBE 320(Blue)
Battery case size mm	Width	980	980	980
	Length	600	670	855
	Height	477	477	477

*Weight including cell connector, spacer, etc.

Battery and Battery Case Specifications

Unit:kg

Model	Body type	Min.	Max.	Optional battery
K1B1L15U	Standard compartment	695	890	765
K1B1R15U	Large compartment	695	890	845
KG1B1L15U	Long wheel base	880	1095	940
				1,095
K1B1L18U	Standard compartment	720	890	765
K1B1L18FU	Standard compartment	720	890	765
K1B1R18U	Large compartment	720	890	845
KG1B1L18U	Long wheel base	880	1095	940
				1095

1B1-U

Recommended Battery Case

Unit:mm

Model	Width	Length	Height
K1B1L15U K1B1L18U K1B1L18FU	980	600	477
K1B1R15U K1B1R18U	980	670	477
KG1B1L15U KG1B1L18U	980	855	477

Optional Battery Charger

Off-Truck Type

Battery		Input voltage (V)*	Output current (A)	Weight kg	1B1
Voltage	Capacity (AH)				
48	450	200	80	44	
		400		51	
	485	200	100	60	
		400		61	
	545	200	100	60	
		400		61	
	565	200	100	60	
		400		61	
	600	200	100	60	
		400		61	
	700	200	130	61	
		400		93	
	865	200	165	98	
		400		108	

*Permissible voltage variation ranges between 190 and 230 volts for 200 volts and between 360 and 460 volts for 400 volts.

On-Truck Type

Battery		Input voltage (V)*	Output current (A)	Weight kg	1B1
Voltage	Capacity (AH)				
48	450	200	85	38	
48	485	200	100	43	
48	545	200	100	43	
48	565	200	100	43	
48	600	200	120	58	
48	700	200	120	58	
48	865	200	170	85	

*Permissible voltage variation ranges between 190 and 230 volts.

1B1-U

Unit Specification

		K1B1-U	
CONTROLLER	Traction control	Transistor chopper	
	Hoist control	1 contactor	
	Field weakening system	Not equipped	
TRACTION MOTOR	Type	U/V/S-model	AC Induction
		E-model	AC Induction
	Voltage		48
	Rated output W/1h	U/V/S-model	9
E-model		8.5	
HOIST PUMP MOTOR	Type	U/V/S-model	AC Induction
		E-model	AC Induction
	Voltage		48
	Rated output W/1h	U/V/S-model	11
E-model		9.5	
STEERING WHEEL	Type	Fully hydrostatic power steering	
	Control		
	Steering gear type		
	Steering wheel	Tilting type	
DRIVE AXLE	Type	Full floating	
	Reduction gear type	Helical	
	Differential gear type	Bevel gear	
STEERING AXLE	Type	Elliot	
	Suspension type	Center pin,rubber mount type	
BRAKE SYSTEM	Service brake	Hydraulic duo-servo with auto-adjuster.Operates on drive wheel	
	Parking brake	Hoot type, mechanically operates on drive wheel	
	Lining material	Non-asbestos	
FRAME & BODY	Frame structure	Integral,All welded frame	
	Overhead guard	Strength conforms to ISO, ANSI standard	
HYDRAULIC SYSTEM	Hydraulic oil pump	Gear type	
	Control valve	Sectional type with main relief valve and tilt lock valve	
	Main releif valve set pressure	170 kg/cm2	
	Lift cylinder	with flow regulator valve	
	Suction filter	150-mesh,wire netting	
	Micron filter	20-micron paper type (Cartridge type)	
	Hydraulic tank capacity	30liter	
LOADING SYSTEM	Mast	All roller mast, Grease sealed roller bearing	
	Carriage	Class	
	Forks	Forged alloy steel,Hook type,Conform to ITA standard	
INSTRUMENTS	Meters	Hour meter,Battery capacity meter	
	Indicators	Pilot light, Low voltage lock light, Parking brake warning light, Brake fluid warning light	
	Switches	Lighting switch, Function switch	