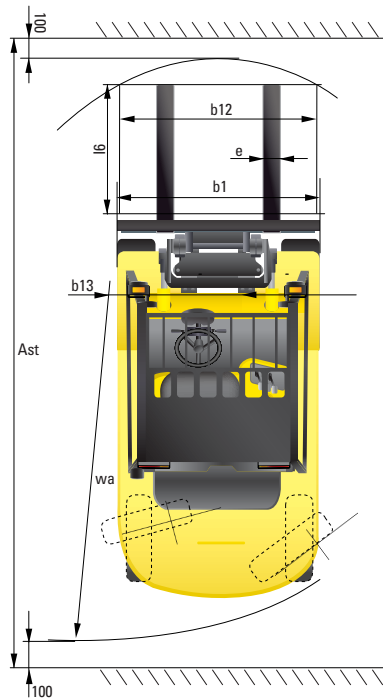
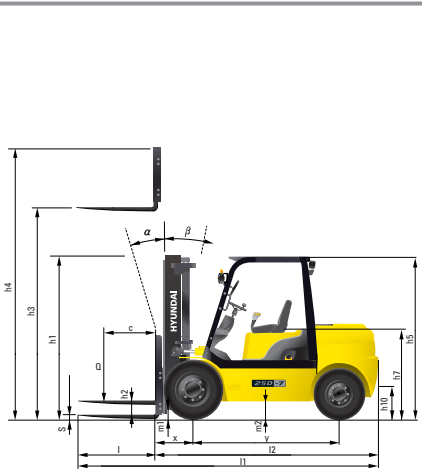


Dimension



Specification

Identification					
1.1	Manufacturer	Hyundai	Hyundai	Hyundai	Hyundai
1.2	Manufacturer's type designation	20D-7	25D-7	30D-7	33D-7
1.3	Drive: electric (battery or mains),diesel,petrol,fuel gas>manual	DIESEL	DIESEL	DIESEL	DIESEL
1.4	Type of operation:hand,pedestrian,standing,seated,order-picker	seated	seated	seated	seated
1.5	Load capacity / rated load	kg/lb 2,000 / 4,000	2,500 / 5,000	3,000 / 6,000	3,300 / 6,500
1.6	Load center distance	c (mm/in)	500 / 24	500 / 24	500 / 24
1.8	Load distance, center of drive axle to fork	x(mm/in)	461 / 18.1	461 / 18.1	464 / 18.3
1.9	Wheelbase	y(mm/in)	1,650 / 65	1,650 / 65	1,700 / 67
Weights					
2.1	Service weight	kg/lb	3,604 / 7,945	3,894 / 8,585	4,411 / 9,725
2.2	Axle loading, loaded front/rear	kg	4,847 / 757	5,579 / 815	6,450 / 962
2.3	Axle loading, unloaded front/rear	kg	1,683 / 1,921	1,623 / 2,271	1,748 / 2,663
Wheels, Chassis					
3.1	Tires:solid rubber, superelastic, pneumatic, polyurethane	pneumatic	pneumatic	pneumatic	pneumatic
3.2	Tires size, front(ϕ x width)	7.00-12-12PR	7.00-12-12PR	28x9-15-14PR	28x9-15-14PR
3.3	Tires size, rear(ϕ x width)	6.00-9-10PR	6.00-9-10PR	6.50-10-12PR	6.50-10-12PR
3.5	Wheels, number front x rear (x=driven wheels)	x2 / 2	x2 / 2	x2 / 2	x2 / 2
3.6	Track width, front	mm/in	965 / 38	965 / 38	1,005 / 40
3.7	Track width, rear	mm/in	980 / 39	980 / 39	980 / 39
Basic Dimensions					
4.1	Mast / fork carriage tilt forward / backward (α / β)	degrees	6 / 10	6 / 10	6 / 10
4.2	Lowered mast height	h1 (mm/in)	2,175 / 86	2,175 / 86	2,190 / 86
4.3	Free lift	h2 (mm/in)	155 / 6.1	155 / 6.1	155 / 6.1
4.4	Lift height	h3 (mm/in)	3,300 / 130	3,300 / 130	3,300 / 130
4.5	Extended mast height	h4 (mm/in)	4,485 / 177	4,485 / 177	4,485 / 177
4.7	Overhead load guard (cab) height	h5 (mm/in)	2,160 / 85	2,160 / 85	2,180 / 86
4.8	Seat height / standing height	h7 (mm/in)	1,086	1,086	1,106
4.12	Coupling height	h10 (mm/in)	306	306	330
4.19	Overall length	l1 (mm/in)	3,577	3,632	3,738
4.20	Length to face of forks	l2 (mm/in)	2,527 / 99	2,582 / 102	2,688 / 106
4.21	Overall width	b1 (mm/in)	1,160 / 46	1,160 / 46	1,230 / 48
4.22	Fork dimensions(hook type)	s / e / l(mm/in)	1,050x100x45 (41x4x1.8)	1,050x100x45 (41x4x1.8)	1,050x125x45 (41x5x1.8)
4.23	Fork carriage ISO 2328, class / type A,B		2A	2A	3A
4.24	Fork-carriage width	b12 (mm/in)	1,084	1,084	1,084
4.31	Ground clearance, loaded, under mast	m1(mm/in)	114 / 4.5	108 / 4.3	118 / 4.6
4.32	Ground clearance, centre of wheelbase	m2(mm/in)	185	185	198
4.33	Aisle width for pallets 1,000x1,200 crossways (LxW)	Ast(mm/in)	3,913 / 154	3,961 / 156	4,057 / 160
4.34	Aisle width for pallets 800x1,200 lengthways (WxL)	Ast'(mm/in)	4,113 / 162	4,161 / 164	4,271 / 168
4.35	Turning radius	Wa(mm/in)	2,252 / 89	2,300 / 91	2,383 / 94
4.36	Smallest pivot point distance	b13(mm/in)	698	698	724
Performance Data					
5.1	Travel speed, unloaded	km/h / mph	18.9 / 11.7	18.9 / 11.7	19.8 / 12.3
5.2	Lift speed, loaded/ unloaded	mm/s	560 / 590	540 / 590	480 / 500
5.3	Lowering speed, loaded/unloaded	mm/s	500 / 450	500 / 450	500 / 450
5.5	Drawbar pull, loaded	kg/lb	2,109 / 4,650	2,125 / 4,685	2,016 / 4,445
5.7	Gradient performance, loaded/ unloaded	%	40.1 / 24.8	34.8 / 22.1	28.0 / 21.0
5.9	Acceleration time, loaded/ unloaded(10m)	sec	NA	NA	NA
5.10	Service brake		FOOT	FOOT	FOOT
Engine					
6.1	Engine manufacturer / type		KUBOTA V3300	KUBOTA V3300	KUBOTA V3300
6.2	Engine power acc. to ISO 1585	kW	47	47	47
6.3	Rated speed	1/min	2,300	2,300	2,300
6.4	No. of cylinder / cubic capacity	anz/cm ³	4 / 3,318	4 / 3,318	4 / 3,318
6.5	Fuel consumption acc. To VDI cycle	ℓ / h	2.46	2.56	2.86
Other Details					
8.1	Type of drive control		power shift	power shift	power shift
8.2	Operating pressure (System / Attach)	bar	200 / 165	200 / 165	200 / 165
8.3	Oil volume	ℓ	30	30	30
8.4	Sound level at driver's ear according to (DIN 12 053)	db(A)	80	80	80

1)with DZ mast +25mm; with integrated sideshift x=375mm(with DZ mast +25mm);with hook-on sideshift x=410.5mm(with DZ mast +25mm)



■ Some of the photos may include optional equipment.

We build a better future

20D/25D/30D/33D-7

FORKLIFT TRUCKS Environmentally - Friendly

Standard and optional equipment may vary. Contact your Hyundai dealer for more information. The machine shown may vary according to International standards.
All US measurement rounded off to nearest pounds or inches.

HYUNDAI FORKLIFT

HEAVY INDUSTRIES CO.,LTD.

Head Office(Sales Office)
1 JEONHA-DONG, DONG-GU, ULSAN, KOREA Tel (82) (52) 202-7970, 7729, 0971 Fax (82) (52) 202-7979, 7

U.S. Operation : Hyundai Construction Equipment U.S.A., Inc.
955 ESTES AVENUE, ELK GROVE VILLAGE IL, 60007 Tel (1) 847-437-3333 Fax (1) 847-437-3574

European Operation : Hyundai Heavy Industries Europe N.V.
VOSSENDAAL 11, 2440 GEEL, BELGIUM Tel (32) 14-56-2200 Fax (32) 14-59-3405

India Operation : Hyundai Construction Equipment India Pvt., Ltd
PLOT NO.A-2, CHAKAN INDUSTRIAL AREA, VILL.- KHALUMBRE.
TALUK.- KHED., DIST.- PUNE 410 501, INDIA Tel (91) 21-3530-1700 Fax (91) 21-3530-1712

PLEASE CONTACT

www.hyundai-ce.com

2009. 01 Rev.2

HYUNDAI
HEAVY INDUSTRIES CO.,LTD.

20D/25D/30D/33D -7

New criterion of Forklift Trucks

Hyundai introduces a new line of 7-series diesel forklift trucks. Excellent power and performance makes your business more profitable.



OPSS (Operator Presence Sensing System)
Control of mast tilting, lifting and lowering is not possible through operation of the appropriate control when the operator is not in the normal position.(Option)



■ Some of the photos may include optional equipment.

High Power & Performance

Powerful Engine KUBOTA V3300 Engine

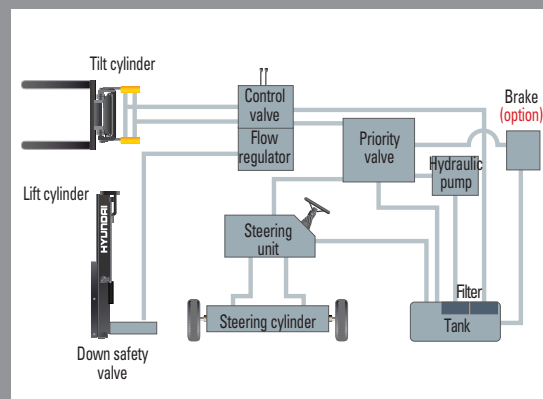
Market approved quality of Kubota V3300 engine ensures incomparable performance, durability and additional value to the machine. 47kW of the engine is more than enough to suit any work, not just with normal 47kW but with special attachments requiring high power as well.(EPA/EU Tier-2 Certified)

47kW/2,300rpm



State-of-the-art hydraulic system

The latest large-capacity hydraulic system reacts quickly during operation, and a low-noise control valve increases both efficiency and durability.



**Ability of best,
The new master on the
job-site!**

Smooth running, efficient and ergonomically designed, 20/25/30/33D-7 series are made to meet your needs.

Some of the photos may include optional equipment.

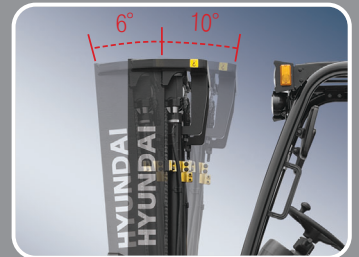
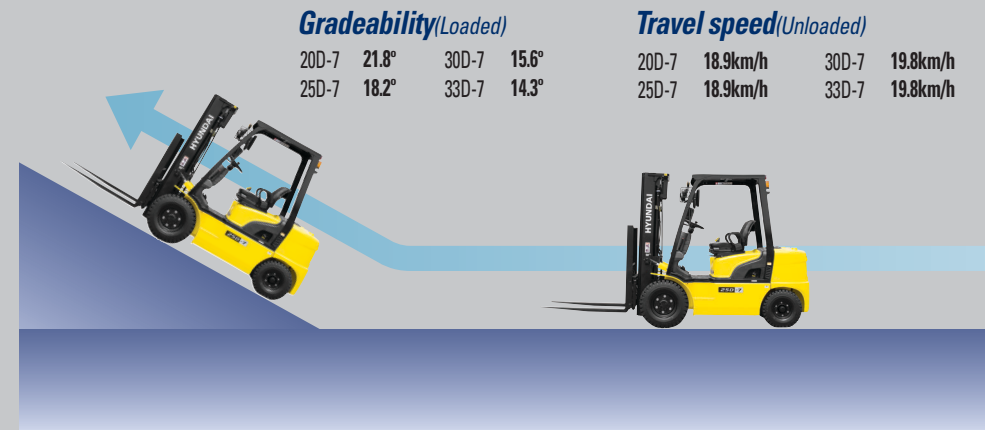


Fast and stable performance

Being able to quickly raise and lower the mast, as well as tilt it forward and backward, provides the best operational conditions during unloading. When the truck is fully loaded, mast lowering speed is carefully controlled to ensure safety by the down control valve.

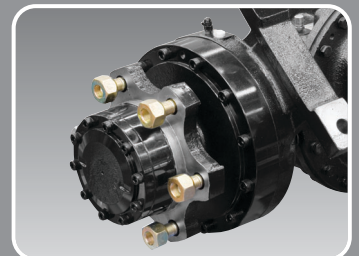
Faster travel speed & Gradeability

The powerful high-output engine provides greater acceleration, better gradeability and faster travel speed on any tough terrain or slope.



Increased mast tilting angle

Utilizing the mast tilting angle of 6 degrees forward and 10 degrees backward, the operator can safely and rapidly perform loading and unloading jobs.



Wet disc brake system

The adoption of Wet disc type brake improves brake performance. Brake pedal effort is improved about 45% at 20% slope and Wet disc brakes have service intervals 5 times longer than conventional.



Fully hydrostatic power steering

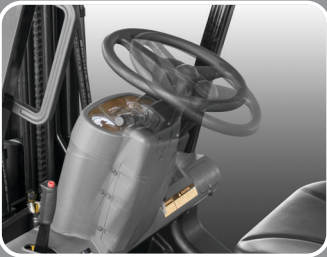
A hydraulic steering system always guarantees smooth and flexible steering, preventing overrun and kick-back.



Key-locking fuel cap

Increased security on job sites with locking fuel cap, plus an increased capacity fuel tank for less down time.

Comfortable Operation



Adjustable steering wheel
Steering wheel with horn button can be adjusted by a lever on the right-hand side for the most comfortable operator position.



Easy and safe shift lever
A single lever on the left side of the steering column gives the operator fast, easy control of direction. The engine can be started in case of neutral position of this lever.



Multi-function switch lever
Multi-functional switch lever gives easy access to lights and horn.



Quick response of operating control levers
Only minimal operator's effort is required for precise, safe and productive control.



Ergonomics driving space design!

A design based on human engineering relieves fatigue and increase operator's efficiency.

Some of the photos may include optional equipment.



Ergonomically positioned pedals
Based on human engineering, the accelerator, brake and inching pedals are optimally positioned for convenience while operating the equipment.

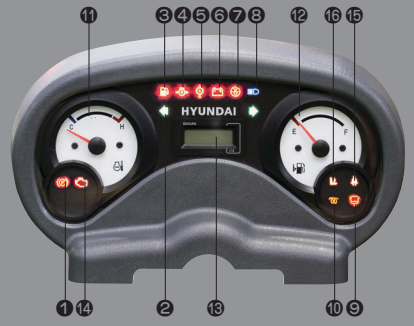


Cup holder & console box
Additional storage spaces are located inside the operating space for operator's convenience.



New high visibility for safe operation
The operator is able to work with increased safety and accuracy due to a wider view mast.

Operator friendly gauges and water-resistant monitor panel



- 1 Parking brake lamp
- 2 Directional indicators
- 3 Fuel warning lamp
- 4 Engine oil warning lamp
- 5 Transmission oil temperature warning lamp
- 6 Battery charging warning lamp
- 7 Air cleaner filter warning light
- 8 Working light indicator
- 9 Water separator lamp
- 10 Pre-heater indicator
- 11 Water temperature gauge
- 12 Fuel gauge
- 13 Hour meter
- 14 Engine check lamp
- 15 Seat belt warning
- 16 OPS warning

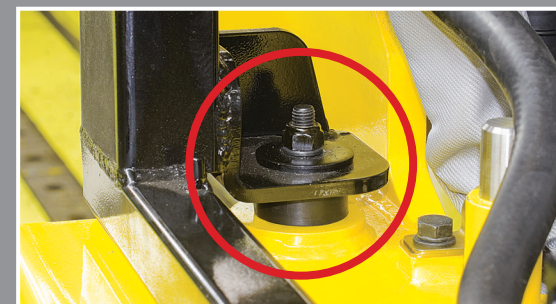
Easily adjustable suspension seat

An attractive and adjustable seat, based on a human engineering design, provides great comfort, safety and durability.



Full-floating headguard mount

The anti-vibration rubber is installed between the guard and truck frame to reduce the source of vibration and noise while driving. This not only reduces operator's fatigue but also increases safety.



Endurance & Safety

Strong overhead guard

The safety overhead guard meets EEC and ANSI regulations and protects the operator during hazardous jobs.



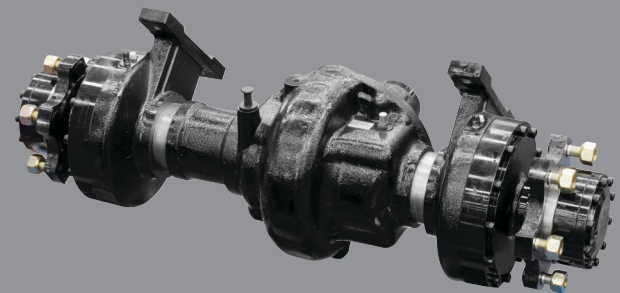
Parking brake

Ratchet type parking brake requires less efforts from the operator to set.



Highly durable split type drive axle

Powershift transmission provides fast travel speed and quiet travel under any heavy load condition, and boosts work efficiency.



Danger-free through high durability!

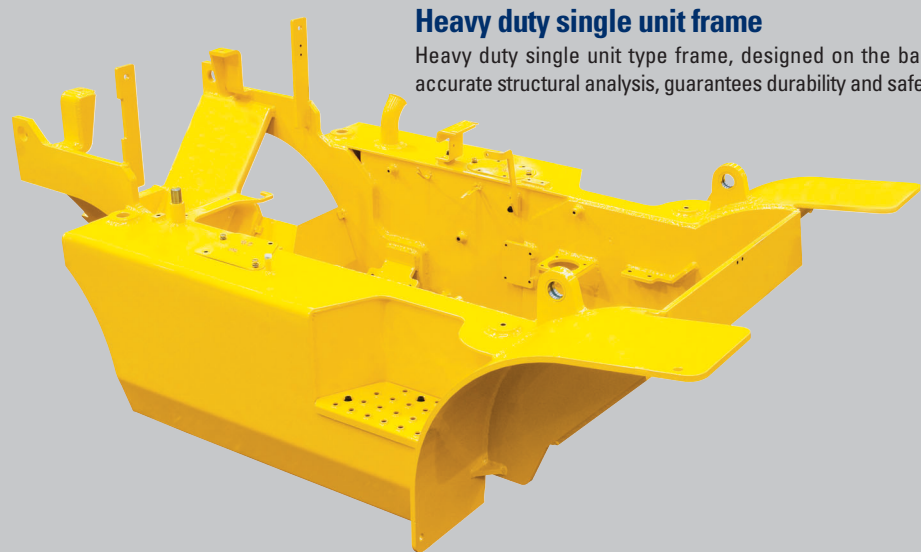
Safety and durability are priorities in the design of the equipment.

■ Some of the photos may include optional equipment.



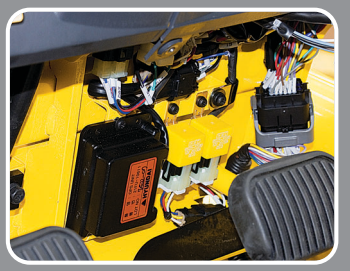
Large footboard & Hand grip

Wide "open" step offers convenience and safety when entering and exiting truck.



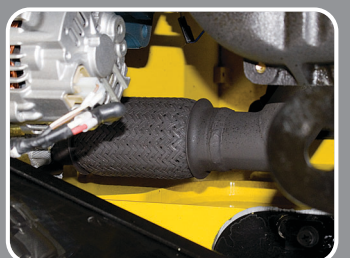
Heavy duty single unit frame

Heavy duty single unit type frame, designed on the basis of accurate structural analysis, guarantees durability and safety.



Improvement in maintenance of electric parts

Various electric parts are centralized in dash board resulting in improvement in maintenance



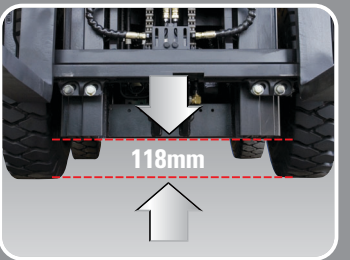
Expansion bellows

The expansion bellows absorbs vibration and reduces noise generated from the exhaust gas system and also extends the life cycle of exhaust gas system.



Bright, protected headlights

Bright, protected headlights is positioned for exceptional visibility.



Ground clearance

The engine and transmission are assembled horizontally and positioned high in the frame to protect expansive components during operation on rugged surface.

Durability **Easy Maintenance**



Electrically monitored air filter

Air cleaner sensor alerts the operator of a restricted air filter and allows replacement before damage.



Easy maintenance oil check

The T/M oil level can be checked easily without any disassembly.



Brake fluid reservoir

Highly visible, easily accessible reservoir makes for quicker daily inspections.



An accessible, compact fuse box for easy inspection



Centralized design for easy service!

An ideal arrangement of component parts ensures easy access and convenience for maintenance.

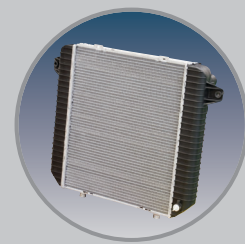


Easy change air cleaner

The air filter is readily accessible for cleaning or replacement. (7inch Cyclone Type)



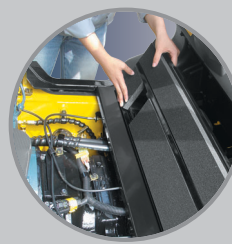
Portable side cover



Aluminum radiator with superb protection against heat



Engine oil condition check



One touch(tool-less) floor plate

Mast Specification

Mast Type	Maximum Fork Height mm(in)	Overall Height Lowered		Tilt Angle deg	Load Capacity w / o side shift at 500 mm(24 in)LC						Load Capacity w / side shift at 500 mm(24 in)LC						Truck Weight Unload							
		mm(in)			Single Tire (kg / lb)			Double Tire (kg / lb)			Single Tire (kg / lb)			Double Tire (kg / lb)			Single Tire (kg / lb)			Double Tire (kg / lb)				
		Fwd	Bwd		200-7	250-7	300-7	200-7	250-7	300-7	200-7	250-7	300-7	200-7	250-7	300-7	200-7	250-7	300-7	200-7	250-7	300-7		
2-Stage limited free lift	V300	3,000 (118.1)	2,025 (79.7)	2,040 (80.3)	6	10	2,000 (4,000)	2,500 (5,000)	3,000 (6,000)	2,000 (4,000)	2,500 (5,000)	3,000 (6,000)	2,000 (4,000)	2,500 (5,000)	3,000 (6,000)	2,000 (4,000)	2,500 (5,000)	3,000 (6,000)	3,584 (7,902)	3,874 (8,541)	4,391 (9,681)	3,721 (8,202)	4,011 (8,842)	4,478 (9,872)
	*V330	3,300 (129.9)	2,175 (85.6)	2,190 (86.2)	6	10	2,000 (4,000)	2,500 (5,000)	3,000 (6,000)	2,000 (4,000)	2,500 (5,000)	3,000 (6,000)	2,000 (4,000)	2,500 (5,000)	3,000 (6,000)	2,000 (4,000)	2,500 (5,000)	3,000 (6,000)	3,604 (7,945)	3,894 (8,585)	4,411 (9,725)	3,740 (8,246)	4,030 (8,885)	4,498 (9,916)
	V350	3,500 (137.8)	2,275 (89.6)	2,290 (90.2)	6	10	2,000 (4,000)	2,500 (5,000)	3,000 (6,000)	2,000 (4,000)	2,500 (5,000)	3,000 (6,000)	2,000 (4,000)	2,500 (5,000)	3,000 (6,000)	2,000 (4,000)	2,500 (5,000)	3,000 (6,000)	3,621 (7,983)	3,911 (8,622)	4,429 (9,765)	3,757 (8,283)	4,047 (8,922)	4,516 (9,955)
	V370	3,700 (145.7)	2,425 (95.5)	2,440 (96.1)	6	10	2,000 (4,000)	2,500 (5,000)	3,000 (6,000)	2,000 (4,000)	2,500 (5,000)	3,000 (6,000)	2,000 (4,000)	2,500 (5,000)	3,000 (6,000)	2,000 (4,000)	2,500 (5,000)	3,000 (6,000)	3,643 (8,031)	3,933 (8,671)	4,452 (9,815)	3,779 (8,332)	4,069 (8,971)	4,538 (10,006)
	V400	4,000 (157.4)	2,575 (101.4)	2,590 (102.0)	6	10	2,000 (4,000)	2,500 (5,000)	3,000 (6,000)	2,000 (4,000)	2,500 (5,000)	3,000 (6,000)	2,000 (4,000)	2,475 (5,450)	2,950 (6,500)	2,000 (4,000)	2,500 (5,000)	2,975 (6,500)	3,673 (8,097)	3,963 (8,737)	4,483 (9,883)	3,809 (8,386)	4,099 (9,037)	4,570 (10,074)
	V430	4,300 (169.3)	2,725 (107.3)	2,740 (107.9)	6	6	2,000 (4,000)	2,450 (5,000)	2,925 (6,500)	2,000 (4,000)	2,500 (5,000)	3,000 (6,000)	1,950 (4,000)	2,400 (4,900)	2,875 (6,500)	2,000 (4,000)	2,450 (5,000)	2,925 (6,500)	3,725 (8,212)	4,015 (8,851)	4,536 (9,999)	3,861 (8,512)	4,151 (9,151)	4,622 (10,190)
2-Stage full free lift	V450	4,500 (177.2)	2,875 (113.2)	2,890 (113.8)	6	6	2,000 (4,000)	2,400 (4,900)	2,875 (6,500)	2,000 (4,000)	2,400 (4,900)	2,875 (6,500)	1,900 (4,000)	2,325 (4,790)	2,750 (6,200)	2,000 (4,000)	2,400 (4,900)	2,825 (6,500)	3,747 (8,260)	4,037 (8,899)	4,567 (9,949)	3,882 (8,560)	4,173 (9,200)	4,644 (10,240)
	V470	4,700 (185.0)	2,975 (117.1)	2,990 (117.7)	6	6	2,000 (4,000)	2,350 (4,850)	2,825 (6,500)	2,000 (4,000)	2,450 (4,900)	2,800 (6,500)	1,900 (4,000)	2,325 (4,790)	2,750 (6,200)	2,000 (4,000)	2,375 (4,900)	2,825 (6,500)	3,761 (8,292)	4,051 (8,931)	4,573 (10,082)	3,897 (8,592)	4,187 (9,231)	4,660 (10,273)
	V500	5,000 (196.9)	3,125 (123.0)	3,140 (123.6)	6	6	1,970 (4,000)	2,300 (4,740)	2,775 (6,200)	2,000 (4,000)	2,400 (4,850)	2,850 (6,500)	1,850 (3,960)	2,275 (4,880)	2,700 (5,950)	1,950 (4,000)	2,350 (4,790)	2,775 (6,200)	3,783 (8,340)	4,073 (8,980)	4,596 (10,133)	3,917 (8,641)	4,209 (9,280)	4,683 (10,324)
	VF290	2,900 (115.4)	2,025 (79.7)	2,040 (80.3)	6	6	2,000 (4,000)	2,500 (5,000)	3,000 (6,000)	2,000 (4,000)	2,500 (5,000)	3,000 (6,000)	2,000 (4,000)	2,500 (5,000)	3,000 (6,000)	2,000 (4,000)	2,500 (5,000)	3,000 (6,000)	3,630 (8,003)	3,920 (8,643)	4,431 (9,770)	3,767 (8,305)	4,057 (8,945)	4,518 (9,960)
	VF320	3,200 (127.2)	2,175 (85.6)	2,190 (86.2)	6	6	2,000 (4,000)	2,500 (5,000)	3,000 (6,000)	2,000 (4,000)	2,500 (5,000)	3,000 (6,000)	2,000 (4,000)	2,500 (5,000)	3,000 (6,000)	2,000 (4,000)	2,500 (5,000)	3,000 (6,000)	3,664 (8,077)	3,954 (8,719)	4,465 (9,849)	3,801 (8,379)	4,091 (9,018)	4,553 (10,037)
	TF370	3,700 (145.7)	1,825 (71.9)	1,840 (72.4)	6	6	2,000 (4,000)	2,500 (5,000)	3,000 (6,000)	2,000 (4,000)	2,500 (5,000)	3,000 (6,000)	2,000 (4,000)	2,450 (5,000)	2,900 (6,500)	2,000 (4,000)	2,500 (5,000)	2,950 (6,500)	3,721 (8,203)	4,011 (8,842)	4,541 (10,011)	3,858 (8,505)	4,148 (9,144)	4,627 (10,201)
3-Stage full free lift	TF400	4,000 (157.4)	1,825 (75.8)	1,840 (76.4)	6	6	2,000 (4,000)	2,450 (5,000)	2,900 (6,500)	2,000 (4,000)	2,500 (5,000)	2,975 (6,500)	1,950 (4,000)	2,400 (4,900)	2,825 (6,500)	2,000 (4,000)	2,450 (5,000)	2,900 (6,500)	3,745 (8,256)	4,035 (8,895)	4,565 (10,049)	3,882 (8,558)	4,172 (9,200)	4,651 (10,254)
	TF430	4,300 (169.3)	2,025 (79.7)	2,040 (80.3)	6	6	2,000 (4,000)	2,375 (4,900)	2,850 (6,500)	2,000 (4,000)	2,450 (5,000)	2,800 (6,500)	1,900 (4,000)	2,350 (4,790)	2,775 (6,200)	2,000 (4,000)	2,400 (4,900)	2,825 (6,500)	3,763 (8,295)	4,053 (8,935)	4,587 (10,113)	3,900 (8,597)	4,190 (9,237)	4,673 (10,303)
	TF450	4,500 (177.2)	2,125 (83.7)	2,140 (84.3)	6	6	2,000 (4,000)	2,350 (4,790)	2,800 (6,500)	2,000 (4,000)	2,425 (5,000)	2,850 (6,500)	1,875 (4,000)	2,325 (4,740)	2,725 (6,000)	1,950 (4,000)	2,350 (4,790)	2,750 (6,000)	3,785 (8,344)	4,075 (8,899)	4,613 (10,169)	3,922 (8,646)	4,212 (9,265)	4,691 (10,359)
	TF470	4,700 (185.0)	2,175 (85.6)	2,190 (86.2)	6	6	1,950 (4,000)	2,300 (4,740)	2,775 (6,200)	2,000 (4,000)	2,375 (4,850)	2,825 (6,500)	1,900 (3,960)	2,275 (4,880)	2,675 (5,950)	1,925 (4,000)	2,300 (4,740)	2,725 (6,200)	3,798 (8,373)	4,088 (9,013)	4,627 (10,201)	3,935 (8,675)	4,225 (9,315)	4,713 (10,390)
	TF500	5,000 (196.9)	2,275 (89.6)	2,290 (90.2)	6	6	1,900 (3,910)	2,250 (4,630)	2,700 (5,950)	1,950 (4,000)	2,325 (4,740)	2,750 (6,200)	1,800 (3,950)	2,200 (4,570)	2,600 (5,340)	1,900 (3,910)	2,275 (4,630)	2,675 (5,950)	3,820 (8,422)	4,110 (9,062)	4,649 (10,250)	3,957 (8,724)	4,247 (9,364)	4,735 (10,440)
	TF550	5,500 (216.5)	2,475 (97.4)	2,490 (98.0)	6	6	1,825 (3,740)	1,800 (3,960)	2,600 (5,340)	1,875 (3,950)	2,250 (4,570)	2,650 (5,400)	1,725 (3,860)	1,700 (3,850)	2,525 (5,180)	1,825 (3,740)	2,100 (4,460)	2,575 (5,280)	3,860 (8,508)	4,150 (9,148)	4,684 (10,347)	3,987 (8,811)	4,287 (9,430)	4,780 (10,537)
TF600	6,000 (236.2)	2,675 (105.3)	2,690 (105.9)	6	6	1,350 (2,950)	1,100 (2,640)	1,450 (3,250)	2,150 (4,400)	2,550 (5,230)	2,900 (6,500)	1,400 (3,250)	1,150 (2,640)	1,500 (3,250)	1,775 (3,580)	2,100 (4,290)	2,475 (5,070)	3,924 (8,651)	4,214 (9,291)	4,763 (10,501)	4,061 (8,953)	4,351 (9,593)	4,849 (10,691)	

Mast Type	Maximum Fork Height mm(in)	Overall Height Lowered		Tilt Angle deg	Load Capacity w / o side shift at 500 mm(24 in)LC		Load Capacity w / side shift at 500 mm(24 in)LC		Truck Weight Unload		
		mm(in)			Single Tire (kg / lb)	Double Tire (kg / lb)	Single Tire (kg / lb)	Double Tire (kg / lb)	Single Tire (kg / lb)	Double Tire (kg / lb)	
		Fwd	Bwd		330-7	330-7	330-7	330-7	330-7	330-7	
2-Stage limited free lift	V290	2,900 (115.4)	2,040 (80.3)	6	10	3,300 (6,500)	3,300 (6,500)	3,300 (6,500)	3,300 (6,500)	4,799 (10,580)	4,890 (10,781)
	*V320	3,200 (127.2)	2,190 (86.2)	6	10	3,300 (6,500)	3,300 (6,500)	3,300 (6,500)	3,300 (6,500)	4,823 (10,632)	4,914 (10,833)
	V340	3,400 (133.9)	2,290 (90.2)	6	10	3,300 (6,500)	3,300 (6,500)	3,300 (6,500)	3,300 (6,500)	4,839 (10,667)	4,930 (10,868)
	V360	3,600 (141.7)	2,440 (96.1)	6	10	3,300 (6,500)	3,300 (6,500)	3,300 (6,500)	3,300 (6,500)	4,862 (10,720)	4,953 (10,920)
	V390	3,900 (153.5)	2,590 (102.0)	6	10	3,300 (6,500)	3,300 (6,500)	3,300 (6,500)	3,300 (6,500)	4,894 (10,790)	4,985 (10,991)
	V420	4,200 (165.4)	2,740 (107.9)	6	6	3,300 (6,500)	3,300 (6,500)	3,275 (6,500)	3,300 (6,500)	4,948 (10,908)	5,039 (11,109)
2-Stage full free lift	V440	4,400 (173.2)	2,890 (113.8)	6	6	3,275 (6,500)	3,300 (6,500)	3,200 (6,500)	3,300 (6,500)	4,972 (10,960)	5,063 (11,161)
	V460	4,600 (181.1)	2,990 (117.7)	6	6	3,225 (6,500)	3,300 (6,500)	3,150 (6,440)	3,300 (6,500)	4,987 (10,995)	5,078 (11,196)
	V480	4,800 (192.9)	3,140 (123.6)	6	6	3,175 (6,440)	3,250 (6,500)	3,100 (6,330)	3,150 (6,500)	5,011 (11,048)	5,102 (11,248)
	VF290	2,900 (115.4)	2,090 (82.3)	6	6	3,300 (6,500)	3,300 (6,500)	3,300 (6,500)	3,300 (6,500)	4,837 (10,664)	4,928 (10,865)
	VF320	3,200 (127.2)	2,240 (88.2)	6	6	3,300 (6,500)	3,300 (6,500)	3,300 (6,500)	3,300 (6,500)	4,873 (10,742)	4,964 (10,943)
	VF370	3,700 (145.7)	1,890 (74.4)	6	6	3,300 (6,500)	3,300 (6,500)	3,300 (6,500)	3,300 (6,500)	4,980 (10,978)	5,071 (11,179)
3-Stage full free lift	TF400	4,000 (157.4)	1,990 (78.3)	6	6	3,275 (6,500)	3,300 (6,500)	3,200 (6,500)	3,300 (6,500)	5,002 (11,027)	5,093 (11,228)
	TF430	4,300 (169.3)	2,090 (82.3)	6	6	3,200 (6,500)	3,300 (6,500)	3,150 (6,390)	3,225 (6,500)	5,023 (11,073)	5,114 (11,274)
	TF450	4,500 (177.2)	2,190 (86.2)	6	6	3,150 (6,440)	3,250 (6,500)	3,075 (6,280)	3,175 (6,500)	5,045 (11,121)	5,136 (11,322)
	TF470	4,700 (185.0)	2,240 (88.2)	6	6	3,100 (6,330)	3,200 (6,500)	3,025 (6,220)	3,125 (6,390)	5,058 (11,151)	5,149 (11,351)
	TF500	5,000 (196.9)	2,340 (