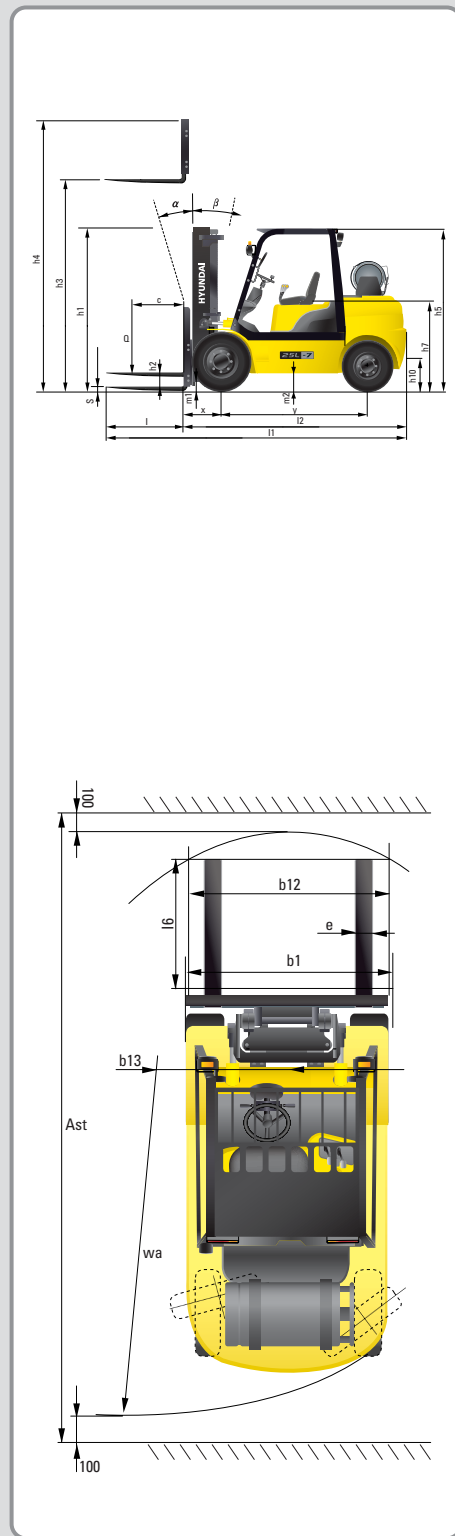


## Dimension



## Specification

Identification				
1.1	Manufacturer	Hyundai	Hyundai	Hyundai
1.2	Manufacturer's type designation	20L-7	25L-7	30L-7
1.3	Drive: electric (battery or mains), diesel, petrol, fuel gas, manual	FUEL GAS / PETROL	FUEL GAS / PETROL	FUEL GAS / PETROL
1.4	Type of operation: hand, pedestrian, standing, seated, order-picker	seated	seated	seated
1.5	Load capacity / rated load	kg 2,000	kg 2,500	kg 3,000
1.6	Load center distance	c mm 500	500	500
1.8	Load distance, center of drive axle to fork	x mm 461	464	464
1.9	Wheelbase	y mm 1,650	1,650	1,700
Weights				
2.1	Service weight	kg 3,476	3,766	4,268
2.2	Axle loading, loaded front/rear	kg 4,763	5,095	6,357
2.3	Axle loading, unloaded front/rear	kg 1,599	1,539	1,656
Wheels, Chassis				
3.1	Tires: solid rubber, superelastic, pneumatic, polyurethane	Pneumatic	Pneumatic	Pneumatic
3.2	Tires size, front (φ x width)	7.00-12-12PR	7.00-12-12PR	28 x 9-15-14PR
3.3	Tires size, rear (φ x width)	6.00-9-10PR	6.00-9-10PR	6.50-10-12PR
3.5	Wheels, number front x rear (x=driven wheels)	2 x 2	2 x 2	2 x 2
3.6	Track width, front	mm 965	965	1,005
3.7	Track width, rear	mm 980	980	980
Basic Dimensions				
4.1	Mast / fork carriage tilt forward / backward (α/β) degrees	6 / 10	6 / 10	6 / 10
4.2	Lowered mast height	h1 mm 2,175	2,175	2,190
4.3	Free lift	h2 mm 155	155	155
4.4	Lift height	h3 mm 3,300	3,300	3,300
4.5	Extended mast height	h4 mm 4,485	4,485	4,485
4.7	Overhead load guard (cab) height	h5 mm 2,160	2,160	2,180
4.8	Seat height / standing height	h7 mm 1,086	1,086	1,106
4.12	Coupling height	h10 mm 283	283	299
4.19	Overall length	l1 mm 3,557	3,632	3,738
4.20	Length to face of forks	l2 mm 2,527	2,582	2,688
4.21	Overall width	b1 mm 1,160	1,160	1,230
4.22	Fork dimensions (hook type)	s / e / l mm 1,050 x 100 x 45	1,050 x 100 x 45	1,050 x 125 x 45
4.23	Fork carriage ISO 2328, class / type A,B	II / A	II / A	III / A
4.24	Fork-carriage width	b12 mm 1,060	1,060	1,060
4.31	Ground clearance, loaded, under mast	m1 mm 130	130	145
4.32	Ground clearance, centre of wheelbase	m2 mm 171	171	189
4.33	Right Angle Stacking Aisle for Pallets 1,000x1,200(LxW)	Ast mm 3,913	3,961	4,057
4.34	Right Angle Stacking Aisle for Pallets 800x1,200(WxL)	Ast mm 4,133	4,161	4,257
4.35	Turning radius	Wa mm 2,252	2,300	2,393
4.36	Smallest pivot point distance	b13 mm 722	722	722
Performance Data				
5.1	Travel speed, unloaded	km/h 18.1	18.1	19.1
5.2	Lift speed, loaded/unloaded	mm/s 580 / 610	580 / 610	580 / 610
5.3	Lowering speed, loaded/unloaded	mm/s 500 / 450	500 / 450	500 / 450
5.5	Drawbar pull, loaded	kg 1,867	1,880	1,781
5.7	Gradient performance, loaded/unloaded	% 35.8 / 24.3	31.1 / 21.5	25.0 / 20.4
5.9	Acceleration time, loaded/unloaded(10m)	sec N/A	N/A	N/A
5.10	Service brake	Mechanic / Hydraulic	Mechanic / Hydraulic	Mechanic / Hydraulic
Engine				
6.1	Engine manufacturer / type	HMC BETA	HMC BETA	HMC BETA
6.2	Engine power acc. to ISO 1585	kW 37	37	37
6.3	Rated speed	1/min 2,450	2,450	2,450
6.4	No. of cylinder / cubic capacity	anz/cil 4 / 1,975	4 / 1,975	4 / 1,975
6.5	Fuel consumption acc. To VDI cycle	ℓ/h N/A	N/A	N/A
Other Details				
8.1	Type of drive control	Power Shift	Power Shift	Power Shift
8.2	Operating pressure	bar 225 / 168	225 / 168	225 / 168
8.3	Oil volume	ℓ 30	30	30
8.4	Noise	db(A) 80	80	80



■ Some of the photos may include optional equipment.

# 20L/25L/30L-7

FORKLIFT TRUCKS Environmentally - Friendly

## HYUNDAI FORKLIFT

HEAVY INDUSTRIES CO., LTD.

Head Office(Sales Office)  
1 JEONHA-DONG, DONG-GU, ULSAN, KOREA Tel (82) (52) 202-7970, 7729 Fax (82) (52) 202-7979, 7720

U.S. Operation : Hyundai Construction Equipment U.S.A., Inc.  
955 ESTES AVENUE, ELK GROVE VILLAGE IL., 60007 Tel (1) 847-437-3333 Fax (1) 847-437-3574

European Operation : Hyundai Heavy Industries Europe N.V.  
VOSSENDAAL 11, 2440 GEEL, BELGIUM Tel (32) 14-562200 Fax (32) 14-593405-06

India Operation : Hyundai Construction Equipment India Private Limited  
303, 3rd Floor, Siddhivinayak Aurum, 33/1/1/2 Vadgaon Sheri,  
Vinam Nagar, Pune 411 014 India Tel 91-20-4003-8160 Fax 91-20-4003-8163

PLEASE CONTACT

www.hyundai-ce.com

2008. 06. Rev 1

**HYUNDAI**  
HEAVY INDUSTRIES CO., LTD.

We build a better future

20L | 25L | 30L -7

### New Criterion of Forklift Trucks

Hyundai introduces a new line of 7-series LPG forklift trucks.

Excellent power and performance makes your business more profitable.



**OPSS (Operator Presence Sensing System)**  
Control of mast tilting, lifting and lowering is not possible through operation of the appropriate control when the operator is not in the normal position. (Option)

■ Some of the photos may include optional equipment.

# High Power & Performance

## Powerful Engine HMC BETA Engine

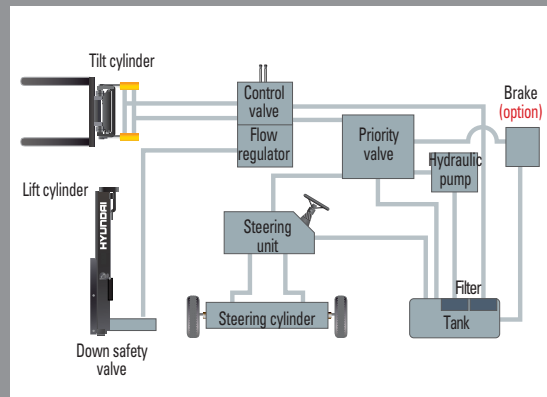
Market approved quality of HMC BETA engine ensures incomparable performance, durability and additional value to the machine. 37kW of the engine is more than enough to suit any work, not just with normal 37kW but with special attachments requiring high power as well. (EPA/CARB Tier-3 Certified)

37kW/2,450rpm



## State-of-the-art hydraulic system

The latest large-capacity hydraulic system reacts quickly during operation, and a low-noise control valve increases both efficiency and durability.



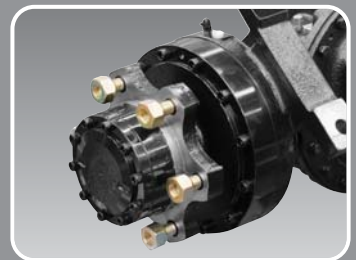
## Ability of best, The new master on the job-site!

Smooth running, efficient and ergonomically designed, 20/25/30L-7 series are made to meet your needs.



## Increased mast tilting angle

Utilizing the mast tilting angle of 6 degrees forward and 10 degrees backward, the operator can safely and rapidly perform loading and unloading jobs.



## Wet disc brake system

The adoption of Wet disc type brake improves brake performance. Brake pedal effort is improved about 45% at 20% slope and Wet disc brakes have service intervals 5 times longer than conventional.

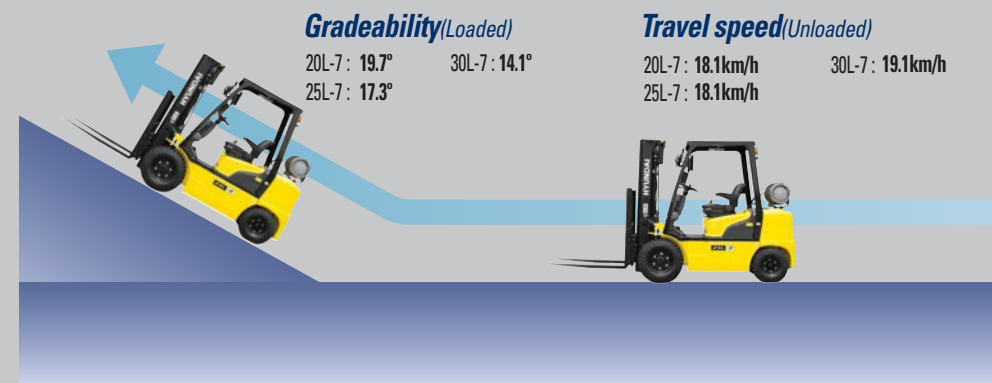


## Fast and stable performance

Being able to quickly raise and lower the mast, as well as tilt it forward and backward, provides the best operational conditions during unloading. When the truck is fully loaded, mast lowering speed is carefully controlled to ensure safety by the down control valve.

## Faster travel speed & gradeability

The powerful high-output engine provides greater acceleration, better gradeability and faster travel speed on any tough terrain or slope.



Some of the photos may include optional equipment.



## Fully hydrostatic power steering

A hydraulic steering system always guarantees smooth and flexible steering, preventing overrun and kick-back.

# Comfortable Operation



### Adjustable steering wheel

Steering wheel with horn button can be adjusted by a lever on the right-hand side for the most comfortable operator position.



### Easy and safe shift lever

A single lever on the left side of the steering column gives the operator fast, easy control of direction. The engine can be started in case of neutral position of this lever.



### Multi-function switch lever

Multi-functional switch lever gives easy access to lights and horn.



### Quick response of operating control levers

Only minimal operator's effort is required for precise, safe and productive control.



## Ergonomics driving space design!

A design based on human engineering relieves fatigue and increase operator's efficiency.

Some of the photos may include optional equipment.



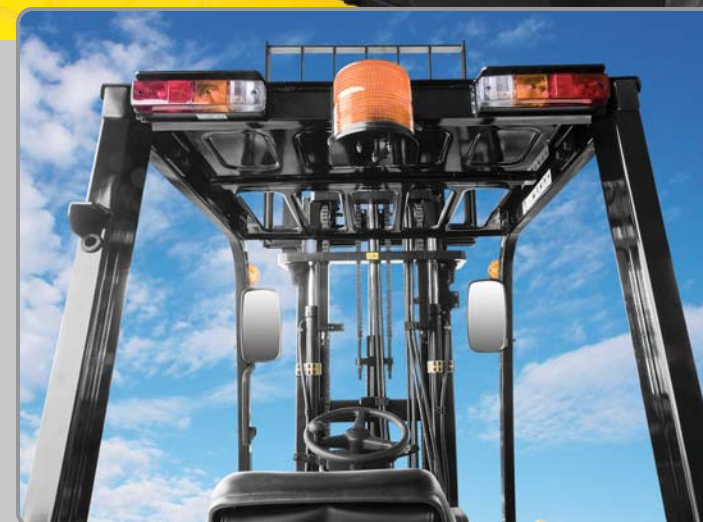
### Ergonomically positioned pedals

Based on human engineering, the accelerator, brake and inching pedals are optimally positioned for convenience while operating the equipment.



### Cup holder & console box

Additional storage spaces are located inside the operating space for operator's convenience.



### New high visibility for safe operation

The operator is able to work with increased safety and accuracy due to a wider view mast.

### Operator friendly gauges and water-resistant monitor panel



- |   |                            |
|---|----------------------------|
| 1 Parking brake lamp                        | 9 Water separator lamp     |
| 2 Directional indicators                    | 10 Pre-heater indicator    |
| 3 Fuel warning lamp                         | 11 Water temperature gauge |
| 4 Engine oil warning lamp                   | 12 Fuel gauge              |
| 5 Transmission oil temperature warning lamp | 13 Hour meter              |
| 6 Battery charging warning lamp             | 14 Engine check lamp       |
| 7 Air cleaner filter warning light          | 15 Seat belt warning       |
| 8 Working light indicator                   | 16 OPS warning             |

### Easily adjustable suspension seat

An attractive and adjustable seat, based on a human engineering design, provides great comfort, safety and durability.



### Full-floating headguard mount

The anti-vibration rubber is installed between the guard and truck frame to reduce the source of vibration and noise while driving. This not only reduces operator's fatigue but also increases safety.



# Endurance & Safety

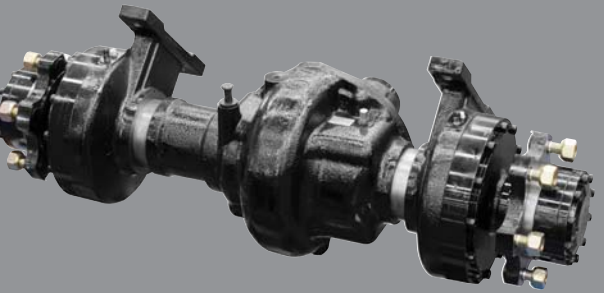
## Strong overhead guard

The safety overhead guard meets EEC and ANSI regulations and protects the operator during hazardous jobs.



## Parking brake

Ratchet type parking brake requires less efforts from the operator to set.



## Highly durable split type drive axle

Powershift transmission provides fast travel speed and quiet travel under any heavy load condition, and boosts work efficiency.



# Danger-free through high durability!

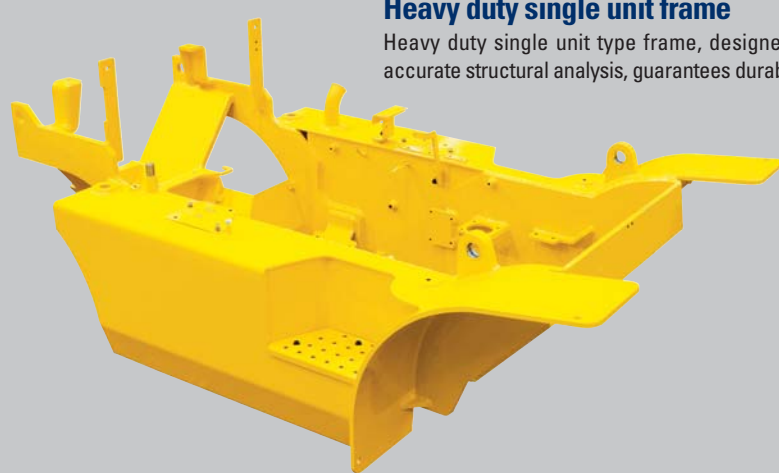
Safety and durability are priorities in the design of the equipment.

Some of the photos may include optional equipment.



## Large footboard & hand grip

Wide "open" step offers convenience and safety when entering and exiting truck.



## Heavy duty single unit frame

Heavy duty single unit type frame, designed on the basis of accurate structural analysis, guarantees durability and safety.



## Improvement in maintenance of electric parts

Various electric parts are centralized in dash board resulting in improvement in maintenance



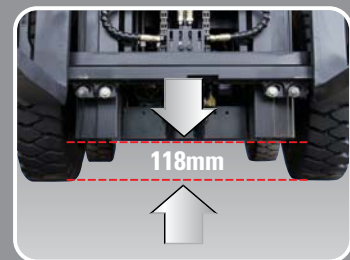
## Expansion bellows

The expansion bellows absorbs vibration and reduces noise generated from the exhaust gas system and also extends the life cycle of exhaust gas system.



## Bright, protected headlights

Bright, protected headlights is positioned for exceptional visibility.



## Ground clearance

The engine and transmission are assembled horizontally and positioned high in the frame to protect expansive components during operation on rugged surface.

# Durability **Easy** Maintenance



### Electrically monitored air filter

Air cleaner sensor alerts the operator of a restricted air filter and allows replacement before damage.



### Easy maintenance oil check

The T/M oil level can be checked easily without any disassembly.



### Brake fluid reservoir

Highly visible, easily accessible reservoir makes for quicker daily inspections.



### An accessible, compact fuse box for easy inspection



## Centralized design for easy service!

An ideal arrangement of component parts ensures easy access and convenience for maintenance.



### Easy change air cleaner

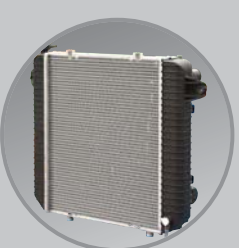
The air filter is readily accessible for cleaning or replacement. (6inch Cyclone Type)



### Portable side cover



### Rotational battery installation



### Aluminum radiator with superb protection against heat



### Engine oil condition check



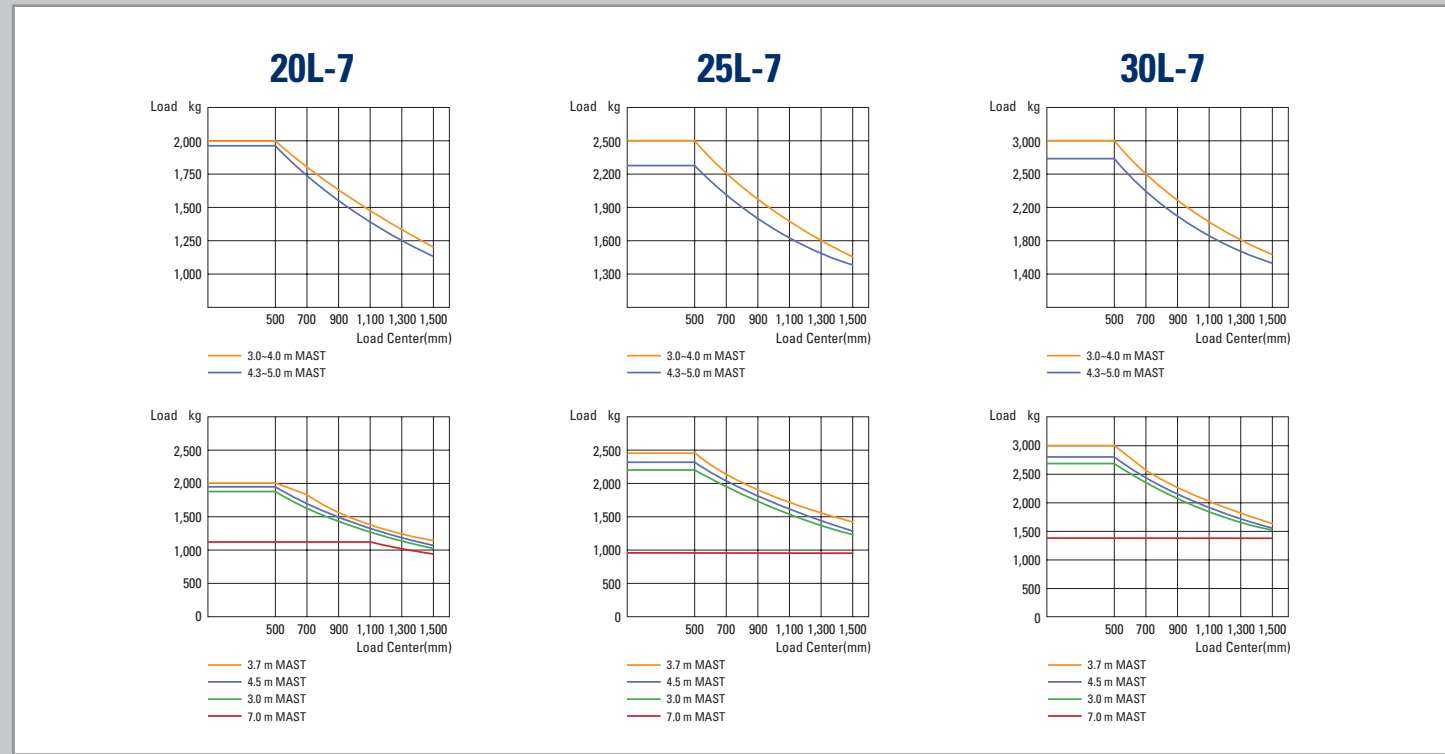
### One touch(tool-less) floor plate

## Mast Specification

Mast Type	Maximum Fork Height mm	Overall Height Lowered		Tilt Angle		Load Capacity w / o side shift at 500mm LC						Load Capacity w / side shift at 500mm LC						Truck Weight Unload						
		mm		deg		Single Tire (kg)			Double Tire (kg)			Single Tire (kg)			Double Tire (kg)			Single Tire (kg)		Double Tire (kg)				
		20/25/30L-7	20/25L-7	30L-7	Fwd	Bwd	20L-7	25L-7	30L-7	20L-7	25L-7	30L-7	20L-7	25L-7	30L-7	20L-7	25L-7	30L-7	20L-7	25L-7	30L-7			
2-Stage limited free lift	V300	3,000	2,025	2,040	6	10	2,000	2,500	3,000	2,000	2,500	3,000	2,000	2,500	3,000	2,000	2,500	3,000	3,457	3,747	4,247	3,593	3,883	4,334
	*V330	3,300	2,175	2,190	6	10	2,000	2,500	3,000	2,000	2,500	3,000	2,000	2,500	3,000	2,000	2,500	3,000	3,476	3,766	4,268	3,612	3,902	4,354
	V350	3,500	2,275	2,290	6	10	2,000	2,500	3,000	2,000	2,500	3,000	2,000	2,500	3,000	2,000	2,500	3,000	3,493	3,783	4,285	3,629	3,919	4,372
	V370	3,700	2,425	2,440	6	10	2,000	2,500	3,000	2,000	2,500	3,000	2,000	2,500	3,000	2,000	2,500	3,000	3,515	3,805	4,308	3,651	3,941	4,395
	V400	4,000	2,575	2,590	6	10	2,000	2,450	3,000	2,000	2,500	3,000	2,000	2,475	2,950	2,000	2,500	3,000	3,545	3,835	4,339	3,681	3,971	4,426
	V430	4,300	2,725	2,740	6	6	2,000	2,400	2,925	2,000	2,475	3,000	1,950	2,400	2,875	2,000	2,450	2,925	3,597	3,887	4,392	3,733	4,023	4,478
	V450	4,500	2,875	2,890	6	6	2,000	2,350	2,875	2,000	2,425	2,950	1,930	2,350	2,825	2,000	2,400	2,875	3,619	3,909	4,414	3,755	4,045	4,501
2-Stage full free lift	V470	4,700	2,975	2,990	6	6	1,975	2,325	2,825	2,000	2,400	2,925	1,900	2,325	2,750	2,000	2,375	2,825	3,633	3,923	4,430	3,770	4,060	4,516
	V500	5,000	3,125	3,140	6	6	1,925	2,250	2,775	1,975	2,350	2,850	1,950	2,350	2,775	2,000	2,375	2,825	3,655	3,945	4,452	3,792	4,082	4,539
	VF290	2,932	2,025	2,040	6	6	2,000	2,500	3,000	2,000	2,500	3,000	2,000	2,500	3,000	2,000	2,500	3,000	3,502	3,792	4,288	3,639	3,929	4,374
	VF320	3,232	2,175	2,190	6	6	2,000	2,500	3,000	2,000	2,500	3,000	2,000	2,500	3,000	2,000	2,500	3,000	3,536	3,826	4,323	3,673	3,963	4,409
	TF370	3,700	1,825	1,840	6	6	2,000	2,460	3,000	2,000	2,500	3,000	2,000	2,450	2,900	2,000	2,500	2,950	3,593	3,883	4,387	3,730	4,020	4,483
	TF400	4,000	1,925	1,940	6	6	2,000	2,400	2,925	2,000	2,475	3,000	1,950	2,400	2,850	2,000	2,450	2,900	3,617	3,907	4,422	3,754	4,044	4,508
	TF430	4,300	2,025	2,040	6	6	1,975	2,350	2,850	2,000	2,425	2,925	1,900	2,350	2,775	2,000	2,400	2,825	3,635	3,925	4,444	3,772	4,062	4,530
3-Stage full free lift	TF450	4,500	2,125	2,140	6	6	1,950	2,300	2,800	2,000	2,375	2,875	1,875	2,325	2,725	1,950	2,350	2,775	3,657	3,947	4,469	3,794	4,084	4,555
	TF470	4,700	2,175	2,190	6	6	1,925	2,250	2,775	1,975	2,350	2,825	1,850	2,275	2,675	1,925	2,300	2,725	3,670	3,960	4,483	3,807	4,097	4,569
	TF500	5,000	2,275	2,290	6	6	1,875	2,200	2,700	1,925	2,275	2,775	1,850	2,200	2,600	1,900	2,275	2,675	3,693	3,983	4,506	3,830	4,120	4,592
	TF550	5,500	2,475	2,490	6	6	1,800	1,800	2,300	1,850	2,200	2,675	1,725	1,700	2,525	1,825	2,200	2,575	3,732	4,022	4,550	3,869	4,159	4,636
	TF600	6,000	2,675	2,690	6	6	1,350	1,050	1,300	1,775	2,100	2,575	1,400	1,150	1,750	1,775	2,100	2,475	3,797	4,087	4,620	3,934	4,224	4,706
	TF650	6,500	2,875	2,890	3	3	1,200	1,000	1,200	1,700	2,025	2,475	1,350	1,000	1,700	1,700	2,000	2,375	3,843	4,133	4,670	3,980	4,270	4,756
	TF700	7,000	3,075	3,090	3	3	1,000	900	900	1,625	1,950	2,400	1,100	900	1,450	1,600	1,950	2,275	3,881	4,171	4,714	4,018	4,308	4,800

\* Standard

## Load Capacity



## Optional Items

- **CABIN & HEATER**
- **SIDE SHIFT**
- **INTEGRAL SIDE SHIFT**
- **FORK**  
900mm, 1000mm, 1200mm, 1350mm, 1500mm, 1650mm, 1800mm
- **OVER SHOE**  
1300mm, 1500mm, 1700mm, 1800mm
- **TILTING**  
6/6", 3/3"
- **TIRE**  
Cushion, No-marking, Double
- **SEAT**  
Pocket, Arm Rest, Hip Rest
- **LPG CLAMP**  
Swing Out, Swing Down
- **M.C.V**  
4-Spool
- **ATTACH PIPING**  
3 Spool-piping, 4 Spool-piping
- **MASTER SWITCH**
- **BEACON LAMP**
- **HAZARD SWITCH**
- **WORK LAMP**
- **OPSS**  
Taravel, Taravel + Mast
- **BRAKE PEDAL**  
Hydraulic Booster (w/o Accumulator)