

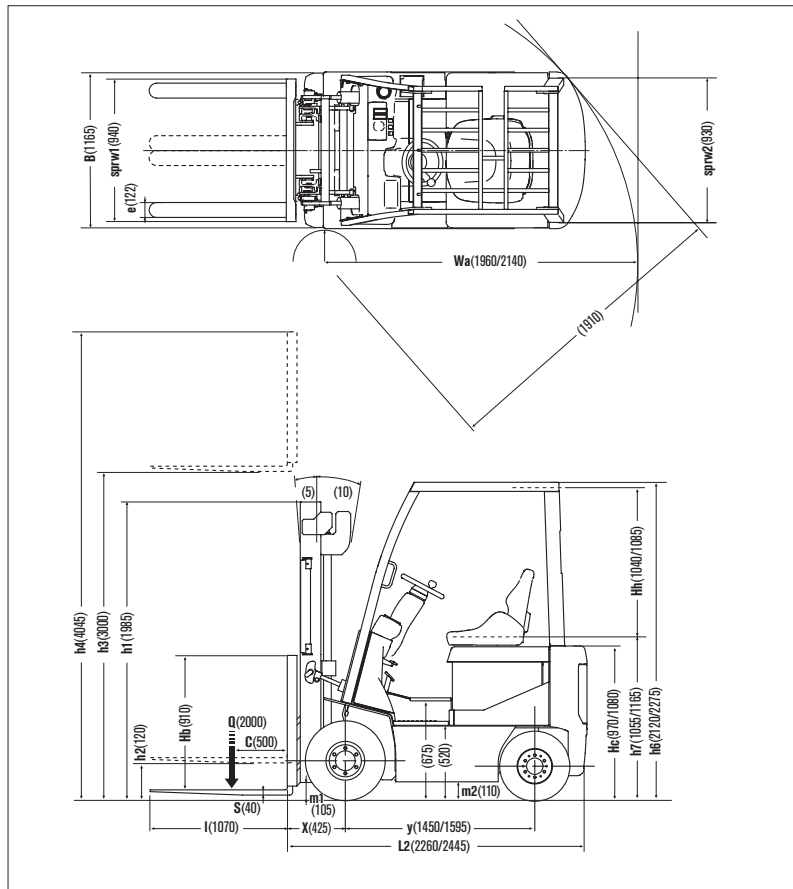
1B2 U-model

2.0

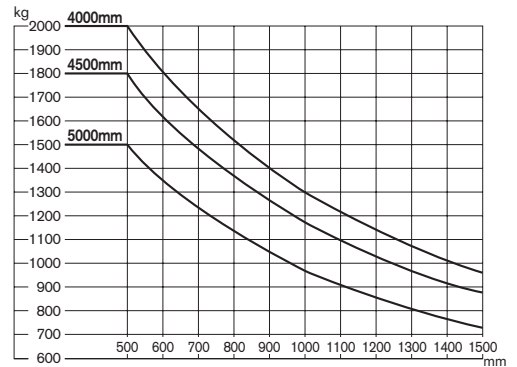
2.5ton
at 500mm
Load Center

1B2-U

Dimensions



Load Capacity Chart



No capacity reduction until 4000 mm height. Load capacities are computed with following conditions, a) Standard 2W Mast and b) Mast in vertical position.

Tire and Tread Specifications

Front Tire	single	double
Front Tire Size	23 x 9-10-16PR	6.50-10-10PR
Overall Width mm	1165	1525
Front Tread mm	940	1130

Ground Clearance

Under mast mm	105	105
Under frame mm	110	110

Mast Specifications & Rated Capacities

P1B2L20U, P1B2R20U, PG1B2L20U

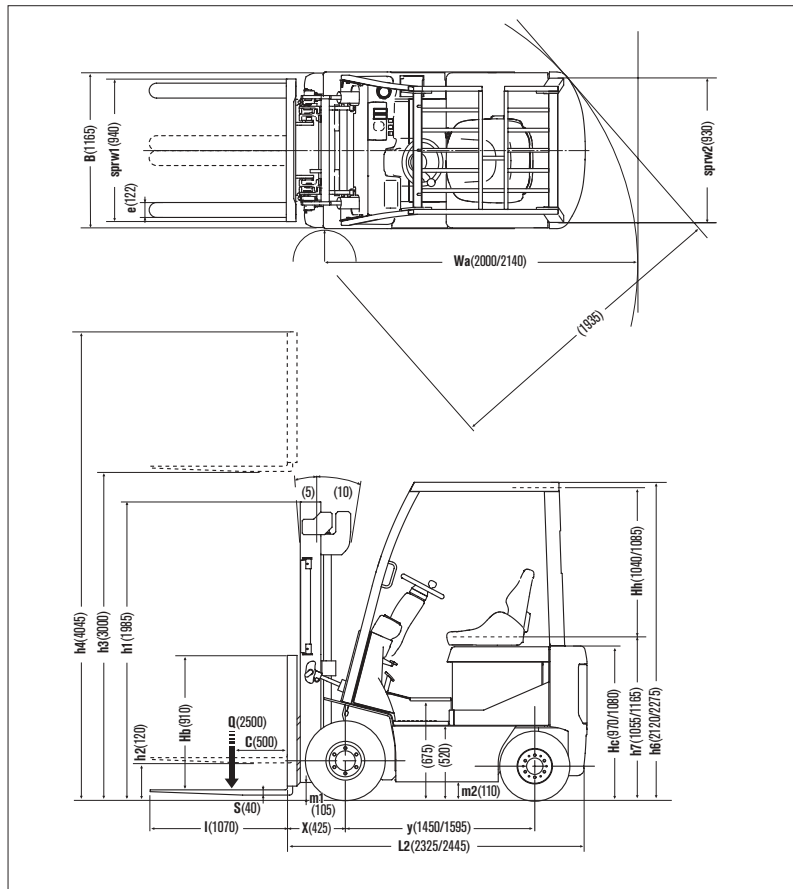
Mast type	Mast name	Max. fork Height mm	Overall height			Free lift		Front overhang mm	Tilt angle Forward/ Backward deg	Capacity Single tire Load center 500mm Kg
			Fully lowered mm	Fully extended		Without backrest mm	With STD backrest mm			
				Without backrest mm	With STD backrest mm					
Two stage (Wide view 2W)	2W270	2700	1835	3320	3745	120	120	425	5/10	2000
	2W300	3000	1985	3620	4045					2000
	2W330	3300	2135	3920	4345					2000
	2W350	3500	2270	4120	4545					2000
	2W370	3700	2395	4320	4745					2000
	2W400	4000	2585	4620	5045					2000
	2W450	4500	2835	5120	5545					1800
2W500	5000	3085	5620	6045	1500					
Two stage (Full free 2F)	2F270	2700	1835	3320	3745	1190	790	425	5/10	2000
	2F300	3000	1985	3620	4045	1340	940			2000
	2F330	3300	2135	3920	4345	1490	1090			2000
	2F350	3500	2270	4120	4545	1625	1225			2000
	2F370	3700	2395	4320	4745	1750	1350			2000
	2F400	4000	2585	4620	5045	1940	1540			2000
Three stage (Full free 3F)	3F385	3850	1835	4505	4895	1190	790	415	5/5	2000
	3F430	4300	1985	4955	5345	1340	940			1900
	3F475	4750	2135	5405	5795	1490	1090			1750
	3F515	5150	2270	5810	6200	1625	1225			1500
	3F550	5500	2395	6155	6545	1750	1350			1100
	3F600	6000	2585	6655	7045	1940	1540			700

Main Truck Specifications

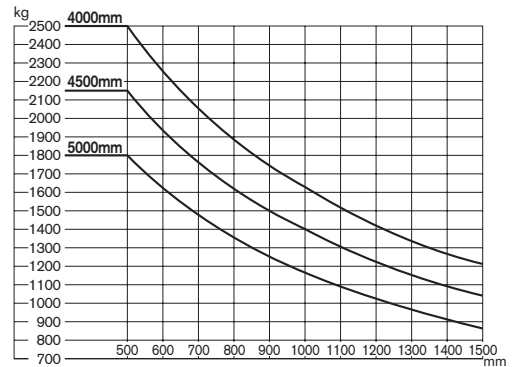
		Item			P1B2L20U	P1B2R20U	PG1B2L20U			
SPECIFICATIONS	1	Manufacturer			NISSAN	NISSAN	NISSAN	1		
	2	Model			P1B2L20U	P1B2R20U	PG1B2L20U	2		
	3	Load capacity	Q	Load lifted	kg	2000	2000	2000	3	
	4	Load center	C	Distance	mm	500	500	500	4	
	5	Power unit	Battery, diesel, Gasoline, LP gas			BAT	BAT	BAT	5	
	6	Operator type	Walkie, rider/stand, rider/seat			Rider / seat	Rider / seat	Rider / seat	6	
	7	Tire type			front/rear	P(SE) / P(SE)	P(SE) / P (SE)	P(SE) / P(SE)	7	
	8	Wheels(X=driven)	Number		front/rear	2 x / 2	2 x / 2	2 x / 2	8	
DIMENSIONS	9	Maximum fork height	h3	Standard lift height	mm	3000	3000	3000	9	
	10	Free lift	h2	Standard free lift	mm	120	120	120	10	
	13	Fork size	s.e.l		mm	40 x 122 x 1070	40 x 122 x 1070	40 x 122 x 1070	13	
		Max. Fork Spread			mm	1000	1000	1000		
		Min. Fork Spread			mm	250	250	250		
	14	Tilt range	/	Mast forward/backward	deg	5 / 10	5 / 10	5 / 10	14	
	15	Overall measurement	L2	Length to fork face	mm	2260	2260	2445	15	
	16		B	Overall width	mm	1165	1165	1165	16	
	17		h1	Height mast retracted	mm	1985	1985	1985	17	
	18		h4	Height mast extended	mm	4045	4045	4045	18	
	19		h6	Height overhead guard	mm	2120	2120	2275	19	
	20		h7	Height of driver's seat	mm	1055	1055	1165	20	
	21	Turning radius (outside)	Wa			mm	1960	1960	2140	21
	22	Load distance	X	From center of front axle		mm	425	425	425	22
23	Right angle stacking aisle	Ast pallets (L x W) 1200 x 800/1000 x 1200		mm	3785 / 3585	3785 / 3585	3965 / 3765	23		
PERFORMANCE	24	Speeds	Travelling	full load	km/h	16	15.5	15	24	
	no load			km/h	17.5	17.5	17			
	Lifting		full load	mm/s	385	385	385	25		
			no load	mm/s	605	605	605			
	Lowering		full load	mm/s	500	500	500	26		
			no load	mm/s	500	500	500			
28	Max. drawber pull	full/no load		N	14595 / 14595	14595 / 14595	14595 / 14595	28		
29	Gradeability at 2km/h	full/no load		%	24 / 40	22 / 35	21 / 33	29		
30	Max. gradeability	full/no load		%	-	-	-	30		
WEIGHTS	32	Truck weight	no load		kg	3445	3825	4065	32	
	33	Weight distribution	full load	front/rear	kg	4855 / 590	4940 / 885	4955 / 1110	33	
			no load	front/rear	kg	1560 / 1885	1645 / 2180	1775 / 2290	34	
CHASSIS & WHEELS	35	Tires	Number.		front/rear	each	2 / 2	2 / 2	2 / 2	35
	36		Size-front			23 x 9-10-16PR	23 x 9-10-16PR	23 x 9-10-16PR	36	
	37		Size-rear			18 x 7-8-14	18 x 7-8-14	18 x 7-8-14	37	
	38	Wheelbase	y			mm	1450	1450	1595	38
	39	Tread	sprw	1/sprw 2	front/rear	mm	940 / 930	940 / 935	940 / 930	39
		Backrest height	Hb	top of backrest - upper of fork face		mm	910	910	910	
		Overhead guard clearance	Hh			mm	1040	1040	1085	
		Counter weight height	Hc			mm	970	970	1080	
	40	Ground clearance	m1	Full load minimum	mast	mm	105	105	105	40
	41		m2	Full load center of wheelbase		mm	110	110	110	41
42	Service brake	Mechanical/hydraulic/electric/pneu				Hyd / Elec	Hyd / Elec	Hyd / Elec	42	
43	Parking brake	Foot/hand/seat switch				Foot	Foot	Foot	43	
DRIVE LINE	45	Battery	Voltage/Capacity		min	V/AH	48 / 450	48 / 700	48 / 865	45
			(5 hour)		max	V/AH	48 / 565	-	-	
	46		weight(STD capacity type)		min-max	kg	710-885	1095	1370	46
	47		drive			KW	12	12	12	47
	48	Electric motors	Load handling			KW	13.5	13.5	13.5	48
			Power steering			KW	-	-	-	
	54	Control type	drive				MOS-INV	MOS-INV	MOS-INV	54
	Load handling				MOS-INV	MOS-INV	MOS-INV			
	Power steering				-	-	-			
57	Operating pressure	for attachment		MPa		12.7	12.7	12.7	57	

1B2-U

Dimensions



Load Capacity Chart



No capacity reduction until 4000 mm height. Load capacities are computed with following conditions, a) Standard 2W Mast and b) Mast in vertical position.

Tire and Tread Specifications

Front Tire	single	double
Front Tire Size	23 x 9-10-16PR	6.50-10-10PR
Overall Width mm	1165	1525
Front Tread mm	940	1130

Ground Clearance

Under mast mm	105	105
Under frame mm	110	110

Mast Specifications & Rated Capacities

P1B2L25U/FU, P1B2R25U, PG1B2L25U

Mast type	Mast name	Max. fork Height mm	Overall height			Free lift		Front overhang mm	Tilt angle Forward/ Backward deg	Capacity Single tire Load center 500mm Kg
			Fully lowered mm	Fully extended		Without backrest mm	With STD backrest mm			
				Without backrest mm	With STD backrest mm					
Two stage (Wide view 2W)	2W270	2700	1835	3320	3745	120	120	425	5/10	2500
	2W300	3000	1985	3620	4045					2500
	2W330	3300	2135	3920	4345					2500
	2W350	3500	2270	4120	4545					2500
	2W370	3700	2395	4320	4745					2500
	2W400	4000	2585	4620	5045					2500
	2W450	4500	2835	5120	5545					2150
2W500	5000	3085	5620	6045	1800					
Two stage (Full free 2F)	2F270	2700	1835	3320	3745	1190	790	425	5/10	2500
	2F300	3000	1985	3620	4045	1340	940			2500
	2F330	3300	2135	3920	4345	1490	1090			2500
	2F350	3500	2270	4120	4545	1625	1225			2500
	2F370	3700	2395	4320	4745	1750	1350			2500
	2F400	4000	2585	4620	5045	1940	1540			2500
Three stage (Full free 3F)	3F385	3850	1835	4505	4895	1190	790	415	5/5	2500
	3F430	4300	1985	4955	5345	1340	940			2400
	3F475	4750	2135	5405	5795	1490	1090			2150
	3F515	5150	2270	5810	6200	1625	1225			1600
	3F550	5500	2395	6155	6545	1750	1350			1250
	3F600	6000	2585	6655	7045	1940	1540			900

Main Truck Specifications

		Item			P1B2L25U/FU	P1B2R25U	PG1B2L25U			
SPECIFICATIONS	1	Manufacturer			NISSAN	NISSAN	NISSAN	1		
	2	Model			P1B2L25U/FU	P1B2R25U	PG1B2L25U	2		
	3	Load capacity	Q	Load lifted	kg	2500	2500	2500	3	
	4	Load center	C	Distance	mm	500	500	500	4	
	5	Power unit		Battery, diesel, Gasoline, LP gas		BAT	BAT	BAT	5	
	6	Operator type		Walkie, rider/stand, rider/seat		Rider / seat	Rider / seat	Rider / seat	6	
	7	Tire type		front/rear		P(SE) / P(SE)	P(SE) / P(SE)	P(SE) / P(SE)	7	
	8	Wheels(X=driven)		Number		2 x / 2	2 x / 2	2 x / 2	8	
DIMENSIONS	9	Maximum fork height	h3	Standard lift height	mm	3000	3000	3000	9	
	10	Free lift	h2	Standard free lift	mm	120	120	120	10	
	13	Fork size		s.e.l	mm	40 x 122 x 1070	40 x 122 x 1070	40 x 122 x 1070	13	
		Max. Fork Spread			mm	1000	1000	1000		
		Min. Fork Spread			mm	250	250	250		
	14	Tilt range	/	Mast forward/backward	deg	5/10	5 / 10	5 / 10	14	
	15	Overall measurement	L2	Length to fork face	mm	2325	2325	2445	15	
	16		B	Overall width	mm	1165	1165	1165	16	
	17		h1	Height mast retracted	mm	1985	1985	1985	17	
	18		h4	Height mast extended	mm	4045	4045	4045	18	
	19		h6	Height overhead guard	mm	2120	2120	2275	19	
	20		h7	Height of driver's seat	mm	1055	1055	1165	20	
	21	Turning radius (outside)	Wa		mm	2000	2000	2140	21	
	22	Load distance	X	From center of front axle	mm	425	425	425	22	
23	Right angle stacking aisle		Ast pallets (L x W) 1200 x 800/1000 x 1200	mm	3825 / 3625	3825 / 3625	3965 / 3765	23		
PERFORMANCE	24	Speeds	Travelling	full load	km/h	15	15	15	24	
	no load			km/h	17.5	17.5	17			
	Lifting		full load	mm/s	345	345	345	25		
			no load	mm/s	605	605	605			
	Lowering		full load	mm/s	500	500	500	26		
			no load	mm/s	500	500	500			
28	Max. drawber pull		full/no load	N	14595 / 14595	14595 / 14595	14595 / 14595	28		
29	Gradeability at 2km/h		full/no load	%	20 / 35	19 / 33	19 / 33	29		
30	Max. gradeability		full/no load	%	-	-	-	30		
WEIGHTS	32	Truck weight		no load	kg	3875	4085	4065	32	
	33	Weight distribution		full load	front/rear	kg	5650 / 725	5725 / 860	5745 / 820	33
	34			no load	front/rear	kg	1535 / 2340	1610 / 2475	1775 / 2290	34
CHASSIS & WHEELS	35	Tires		Number.	front/rear	each	2 / 2	2 / 2	2 / 2	35
	36			Size-front			23 x 9-10-16PR	23 x 9-10-16PR	23 x 9-10-16PR	36
	37			Size-rear			18 x 7-8-14	18 x 7-8-14	18 x 7-8-14	37
	38	Wheelbase	y		mm	1450	1450	1595	38	
	39	Tread	sprw	1/sprw 2	front/rear	mm	940 / 930	940 / 935	940 / 930	39
		Backrest height	Hb	top of backrest - upper of fork face	mm	910	910	910		
		Overhead guard clearance	Hh		mm	1040	1040	1085		
		Counter weight height	Hc		mm	970	970	1080		
	40	Ground clearance	m1	Full load minimum	mast	mm	105	105	105	40
	41		m2	Full load center of wheelbase		mm	110	110	110	41
42	Service brake		Mechanical/hydraulic/electric/pneu			Hyd / Elec	Hyd / Elec	Hyd / Elec	42	
43	Parking brake		Foot/hand/seat switch			Foot	Foot	Foot	43	
DRIVE LINE	45	Battery	Voltage/Capacity (5 hour)	min	V/AH	48 / 565	48 / 700	48/865	45	
	max			V/AH	-	-	-			
	46		weight(STD capacity type)	min-max	kg	885	1095	1370	46	
	47		drive		KW	12	12	12	47	
	48	Electric motors		Load handling	KW	13.5	13.5	13.5	48	
				Power steering	KW	-	-	-		
	54	Control type		drive			MOS-INV	MOS-INV	MOS-INV	54
			Load handling			MOS-INV	MOS-INV	MOS-INV		
			Power steering			-	-	-		
57	Operating pressure		for attachment	MPa	12.7	12.7	12.7	57		

1B2-U

Loading Capacity

P1B2L20U, P1B2R20U, PG1B2L20U

Unit:kg

Mast name	Load center	500mm	600	700	800	900	1000	1100	1200	1300	1400	1500
Single tire	2W 270	2000	1805	1645	1515	1400	1300	1220	1145	1075	1020	965
	2W 300	2000	1805	1645	1515	1400	1300	1220	1145	1075	1020	965
	2W 330	2000	1805	1645	1515	1400	1300	1220	1145	1075	1020	965
	2W 350	2000	1805	1645	1515	1400	1300	1220	1145	1075	1020	965
	2W 370	2000	1805	1645	1515	1400	1300	1220	1145	1075	1020	965
	2W 400	2000	1805	1645	1515	1400	1300	1220	1145	1075	1020	965
	2W 450	1800	1625	1480	1360	1260	1170	1095	1030	970	915	870
	2W 500	1500	1355	1235	1135	1050	975	915	855	805	765	725
	2F 270	2000	1800	1640	1505	1395	1295	1210	1135	1070	1010	960
	2F 300	2000	1800	1640	1505	1395	1295	1210	1135	1070	1010	960
	2F 330	2000	1800	1640	1505	1395	1295	1210	1135	1070	1010	960
	2F 350	2000	1800	1640	1505	1395	1295	1210	1135	1070	1010	960
	2F 370	2000	1800	1640	1505	1395	1295	1210	1135	1070	1010	960
	2F 400	2000	1800	1640	1505	1395	1295	1210	1135	1070	1010	960
	3F 385	2000	1800	1640	1505	1390	1290	1205	1130	1065	1005	955
	3F 430	1900	1710	1555	1430	1320	1225	1145	1075	1010	955	905
	3F 475	1750	1575	1435	1315	1215	1130	1055	990	930	880	835
	3F 515	1500	1350	1230	1125	1040	970	905	850	800	755	715
	3F 550	1100	990	900	825	765	710	660	620	585	550	525
	3F 600	700	630	570	525	485	450	420	395	370	350	330
Double tire	2W 270	2000	1805	1645	1515	1400	1300	1220	1145	1075	1020	965
	2W 300	2000	1805	1645	1515	1400	1300	1220	1145	1075	1020	965
	2W 330	2000	1805	1645	1515	1400	1300	1220	1145	1075	1020	965
	2W 350	2000	1805	1645	1515	1400	1300	1220	1145	1075	1020	965
	2W 370	2000	1805	1645	1515	1400	1300	1220	1145	1075	1020	965
	2W 400	2000	1805	1645	1515	1400	1300	1220	1145	1075	1020	965
	2W 450	1850	1670	1525	1400	1295	1205	1125	1055	995	940	895
	2W 500	1750	1580	1440	1325	1225	1140	1065	1000	940	890	845
	2F 270	2000	1800	1640	1505	1395	1295	1210	1135	1070	1010	960
	2F 300	2000	1800	1640	1505	1395	1295	1210	1135	1070	1010	960
	2F 330	2000	1800	1640	1505	1395	1295	1210	1135	1070	1010	960
	2F 350	2000	1800	1640	1505	1395	1295	1210	1135	1070	1010	960
	2F 370	2000	1800	1640	1505	1395	1295	1210	1135	1070	1010	960
	2F 400	2000	1800	1640	1505	1395	1295	1210	1135	1070	1010	960
	3F 385	2000	1800	1640	1505	1390	1290	1205	1130	1065	1005	955
	3F 430	1900	1710	1555	1430	1320	1225	1145	1075	1010	955	905
	3F 475	1850	1665	1515	1390	1285	1195	1115	1045	985	930	880
	3F 515	1700	1530	1395	1280	1180	1095	1025	960	905	855	810
	3F 550	1600	1440	1310	1205	1110	1035	965	905	850	805	760
	3F 600	1450	1305	1190	1090	1005	935	875	820	770	730	690

Loading Capacity

P1B2L25(F)U, P1B2R25U, PG1B2L25U

Unit:kg

Mast name	Load center	500mm	600	700	800	900	1000	1100	1200	1300	1400	1500
Single tire	2W 270	2500	2255	2060	1890	1750	1630	1525	1430	1345	1275	1210
	2W 300	2500	2255	2060	1890	1750	1630	1525	1430	1345	1275	1210
	2W 330	2500	2255	2060	1890	1750	1630	1525	1430	1345	1275	1210
	2W 350	2500	2255	2060	1890	1750	1630	1525	1430	1345	1275	1210
	2W 370	2500	2255	2060	1890	1750	1630	1525	1430	1345	1275	1210
	2W 400	2500	2255	2060	1890	1750	1630	1525	1430	1345	1275	1210
	2W 450	2150	1940	1770	1625	1505	1400	1310	1230	1160	1095	1040
	2W 500	1800	1625	1480	1360	1260	1170	1095	1030	970	915	870
	2F 270	2500	2255	2050	1885	1740	1620	1515	1420	1335	1265	1200
	2F 300	2500	2255	2050	1885	1740	1620	1515	1420	1335	1265	1200
	2F 330	2500	2255	2050	1885	1740	1620	1515	1420	1335	1265	1200
	2F 350	2500	2255	2050	1885	1740	1620	1515	1420	1335	1265	1200
	2F 370	2500	2255	2050	1885	1740	1620	1515	1420	1335	1265	1200
	2F 400	2500	2255	2050	1885	1740	1620	1515	1420	1335	1265	1200
	3F 385	2500	2250	2050	1880	1740	1615	1510	1415	1330	1260	1195
	3F 430	2400	2160	1965	1805	1670	1550	1450	1360	1280	1210	1145
	3F 475	2150	1935	1760	1615	1495	1390	1295	1215	1145	1080	1025
	3F 515	1600	1440	1310	1205	1110	1035	965	905	850	805	760
	3F 550	1250	1125	1025	940	870	805	755	705	665	630	595
	3F 600	900	810	735	675	625	580	540	510	480	450	430
Double tire	2W 270	2500	2255	2060	1890	1750	1630	1525	1430	1345	1275	1210
	2W 300	2500	2255	2060	1890	1750	1630	1525	1430	1345	1275	1210
	2W 330	2500	2255	2060	1890	1750	1630	1525	1430	1345	1275	1210
	2W 350	2500	2255	2060	1890	1750	1630	1525	1430	1345	1275	1210
	2W 370	2500	2255	2060	1890	1750	1630	1525	1430	1345	1275	1210
	2W 400	2500	2255	2060	1890	1750	1630	1525	1430	1345	1275	1210
	2W 450	2400	2165	1975	1815	1680	1565	1460	1370	1295	1225	1160
	2W 500	2200	1985	1810	1665	1540	1435	1340	1260	1185	1120	1065
	2F 270	2500	2255	2050	1885	1740	1620	1515	1420	1335	1265	1200
	2F 300	2500	2255	2050	1885	1740	1620	1515	1420	1335	1265	1200
	2F 330	2500	2255	2050	1885	1740	1620	1515	1420	1335	1265	1200
	2F 350	2500	2255	2050	1885	1740	1620	1515	1420	1335	1265	1200
	2F 370	2500	2255	2050	1885	1740	1620	1515	1420	1335	1265	1200
	2F 400	2500	2255	2050	1885	1740	1620	1515	1420	1335	1265	1200
	3F 385	2500	2250	2050	1880	1740	1615	1510	1415	1330	1260	1195
	3F 430	2400	2160	1965	1805	1670	1550	1450	1360	1280	1210	1145
	3F 475	2250	2025	1845	1690	1565	1455	1355	1275	1200	1130	1075
	3F 515	2100	1890	1720	1580	1460	1355	1265	1190	1120	1055	1000
	3F 550	1900	1710	1555	1430	1320	1225	1145	1075	1010	955	905
	3F 600	1550	1395	1270	1165	1075	1000	935	875	825	780	740

1B2-U

Truck Weight (Less Battery)

(kg)

Mast type	Mast name	P1B2L20U		P1B2R20U		PG1B2L20U		P1B2L25U/FU		P1B2R25U		PG1B2L25U	
		SINGLE	DOUBLE	SINGLE	DOUBLE	SINGLE	DOUBLE	SINGLE	DOUBLE	SINGLE	DOUBLE	SINGLE	DOUBLE
Two stage (Wide view 2W)	2W270	2710	2765	2710	2765	2675	2730	2970	3020	2965	3020	2675	2730
	2W300	2735	2785	2730	2785	2695	2750	2990	3045	2990	3045	2695	2750
	2W330	2755	2810	2755	2810	2720	2770	3010	3065	3010	3065	2720	2770
	2W350	2775	2830	2775	2830	2740	2790	3030	3085	3030	3085	2740	2790
	2W370	2815	2870	2815	2870	2780	2835	3075	3130	3075	3125	2780	2835
	2W400	2845	2900	2845	2900	2810	2860	3100	3155	3100	3155	2810	2860
	2W450	2885	2935	2880	2935	2845	2900	3140	3195	3140	3195	2845	2900
2W500	2920	2975	2920	2975	2885	2935	3175	3230	3175	3230	2885	2935	
Two stage (Full free 2F)	2F270	2695	2750	2690	2745	2655	2710	2950	3005	2950	3005	2655	2710
	2F300	2715	2770	2715	2770	2680	2735	2975	3030	2970	3025	2680	2735
	2F330	2740	2795	2740	2795	2705	2755	2995	3050	2995	3050	2705	2755
	2F350	2760	2815	2760	2815	2725	2780	3020	3070	3015	3070	2725	2780
	2F370	2800	2855	2800	2850	2765	2815	3055	3110	3055	3110	2765	2815
	2F400	2830	2885	2830	2880	2790	2845	3085	3140	3085	3140	2790	2845
Three stage (Full free 3F)	3F385	2865	2920	2865	2915	2830	2880	3120	3175	3120	3175	2830	2880
	3F430	2895	2950	2895	2950	2860	2915	3155	3210	3155	3205	2860	2915
	3F475	2930	2985	2930	2985	2895	2945	3185	3240	3185	3240	2895	2945
	3F515	2960	3015	2960	3015	2925	2975	3215	3270	3215	3270	2925	2975
	3F550	3010	3065	3010	3065	2975	3030	3270	3325	3265	3320	2975	3030
	3F600	3055	3105	3050	3105	3015	3070	3310	3365	3310	3365	3015	3070
Truck weight without mast		2085	2140	2085	2140	2050	2100	2340	2395	2340	2395	2050	2100

Additional Truck Weight

Tire Weight

Model (Capacity code)		20, 25-U	
Front	Single	Pneumatic tire	0
		Pneumatic type solid tire	+45
	Double	Pneumatic tire	0
		Pneumatic type solid tire	+95
Rear	Single	Pneumatic tire	0
		Pneumatic type solid tire	+20

Forks

Length mm (in)	Model	20, 25-U
	Less fork	-105
	920 (36.2)	-15
	1000 (39.4)	-5
Fork	1070 (42.1)	0
	1150 (45.3)	0
	1220 (48.0)	+5
	1370 (53.9)	+25

Cabin

	20, 25-U
Windshild Glass	+25
Canvas Cabin	+30

Smooth-Run System

	20, 25-U
Goodrun	+15

Carriage & Backrest

Carriage	Backrest	20, 25-U
Standard	High	+5
	Less	-25
Wide	Wide & High	+35

Supplement Data

Standard Specifications

Item	Model			1B2
MOTOR	Traction motor	Type		AC induction
	Hoist pump motor	Type		AC induction
	P.S. motor	Type		

High travel speed/High lifting speed model specifications

Item	Model				P1B2L20U	P1B2R20U	PG1B2L20U	P1B2L25U P1B2L25FU P1B2R25U	PG1B2L25U
	PERFORMANCE	Travel speed	Forward	full load	km/h	16.0	15.5	15.0	15.0
no load				km/h	17.5	17.5	17.0	17.5	17.0
Lifting Speed		2W mast	full load	mm/sec	385	385	385	345	345
			no load	mm/sec	605	605	605	605	605

Right Angle Stacking Aisle [AST] Mast 2W

Unit:mm

Pallet size length (b) x width	Model	P1B2L20U	P1B2R20U	PG1B2L20U	P1B2L25U	P1B2R25U	PG1B2L25U
	1000 x 1200		3585	3585	3765	3625	3625
1200 x 800		3785	3785	3965	3825	3825	3965

Fork Availability

...Standard ...Option

Length mm (in)	Model	20, 25-U
	Fork	Less fork
850		
920		
1000		
1070		
1150		
1220		
1370		
1520		
Extension fork	1000	
	1100	
	1200	
	1300	
	1500	
	1700	
	1800	
2000		

1B2-U

Option Availability

...Standard ...Option

Item		1B2-U
Battery	Less battery	
	Battery (Wet type)	
	Spare battery (Dry type)	
	Battery case	
	Battery connector	EC type Standard type
Battery charger	Microcomputer-controlled one-touch charger	OFF-truck type ON-truck type
Instruments	Liquid crystal display	Battery capacity meter
		Hour meter
		Digital clock
		Warning display
		Speedometer
Warning buzzer	Back-up buzzer	
	Parking brake warning buzzer	
Light	Head lights (without guard)	
	Turn signal lamps	
	Rear combination lamps	
	Rear working lamp	
Tires	Rib-lug tire	
	J-lug tire (Textile)	
	Pneumatic type solid tire	
	Double tire	
	Cushion tire	
	Wide tread	
Body	Floor mat	
	Rain guard	
	Rearview mirror	
Seat	Hip support seat	
Loading mechanism	2W mast	
	2F mast	
	3F mast	
	Mast less	
	Wide carriage	
	High backrest	
	Wide and high backrest	
	Backrest less	
	Tilt cylinder boots	
	Long fork	
	Extension fork	
	Fork less	
	Smooth-Run System	
Hydraulic system	2 spool valve	
	3 spool valve	
	4 spool valve	
	Single control lever	
	Double control lever	
	3 spool piping to carriage	
4 spool piping to carriage		
Tool	Tool kit	
	Tool kit with jack	
Label	English	
	German	
	French	
	Spanish	
Attachment	Side shift (3 spool)	
	Rotating fork (3 spool)	
	Rotating clamp (4 spool)	
	Fork positioner (4 spool)	
F/R lever	Right-side F/R lever	

Fork Dimensions

	Width [W] x Thickness [T] mm (in)
	1B2U 20-25
850 (33.5)	
920 (36.2)	122 x 40
1000 (39.4)	122 x 40
1070 (42.1)	122 x 40
1150 (45.3)	122 x 40
1220 (48.0)	122 x 40
1370 (53.9)	122 x 40
1520 (59.8)	122 x 40
1830 (72.0)	

Carriage & Backrest Dimensions

Carriage

Model		1B2U 20-25
Class		Class
Number of rollers		6
Carriage width [W] mm	Standard	1020
	Wide	1335
Max. fork spread mm	Standard	1000
	Wide	1315

Backrest

Model		1B2U 20-25
Backrest height [H] mm	Standard	945
	High backrest	1255
	Wide backrest	1255
Backrest width [L] ww	Standard & High	1045
	Wide backrest	1360
Plate thickness [T] mm		12

1B2-U

Tire Size

		Model		PK1B2	
Tire				20-25	
Front	Single	Tire size (STD)		23 x 9-10-16PR(I)	
		Rim size (STD)		6.50F x 10TB(I)	
		Type	J-lug textile		
			Rib-lug tire		
	Pneumatic type solid		23 x 9-10/6.50 SOLID		
	Double	Tire size (STD)		6.50-10-10PR(I)	
		Rim size (STD)		5.00F x 10TB(I)	
		Type	J-lug textile		
Rib-lug tire					
Pneumatic type solid			6.50-10/5.00 SOLID		
Rear	Single	Tire size (STD)		18 x 7-8-14PR(I)	
		Rim size (STD)		4.33R x 8TB(I)	
		Type	J-lug textile		
			Rib-lug tire		
			Pneumatic type solid		18 x 7-8/4.33 SOLID

Tool Option

			...Option
			1B2
Tool set	Wrench	8 x 10	
		10 x 12	
		12 x 14	
		14 x 17	
		13 x 17	
	Screwdrivers		
	Wheel nut wrench		
	Thermometer		
	Gravi-meter		
	Puller		
	Tool bag		
Jack		*	

* : Jack is available by separate request.

Battery Selection Guide

Battery and Battery Case Specifications

Unit:kg

		P1B2L20U	P1B2R20U P1B2R25U	P1B2L25U	PG1B2L20U PG1B2L25U
Voltage	V	48	48	48	48
Number of cells		24	24	24	24
Capacity	Ah/5h	450	700	565	865
Battery weight kg	Dry cell	425	686	561	905
	Battery case	98	158	98	158
	Electrolyte	160	205	198	263
	Others*	27	41	28	44
	Total	710	1090	885	1370
Electrolyte quantity	liter	127	168	149	202
Battery connector type	General	Anderson SB 350(Gray)			
	CE area	Anderson SBE 320(Blue)			
Battery case size mm	Width	980	980	980	980
	Length	785	855	785	1010
	Height	477	477	477	587

*Weight including cell connector, spacer, etc.

Battery and Battery Case Specifications

Unit:kg

Model	Body type	Min.	Max.	Optional battery
P1B2L20U	Standard compartment	710	1350	710
P1B2R20U P1B2R25U	Large compartment	805	1350	1095
		895	1350	
P1B2L25U	Standard compartment	865	1350	885
PG1B2L20U PG1B2L25U	Long wheel base	1150	1650	1370

1B2-U

Recommended Battery Case

Unit:mm

Model	Width	Length	Height
P1B2L20U	980	785	477
P1B2R20U	980	855	477
P1B2R25U			
P1B2L25U	980	785	477
PG1B2L20U	980	1010	587
PG1B2L25U			

Optional Battery Charger

Off-Truck Type

Battery		Input voltage (V)*	Output current (A)	Weight kg	1B2
Voltage	Capacity (AH)				
48	450	200	80	44	
		400		51	
	485	200	100	60	
		400		61	
	545	200	100	60	
		400		61	
	565	200	100	60	
		400		61	
	600	200	100	60	
		400		61	
	700	200	130	61	
		400		93	
	865	200	165	98	
		400		108	

*Permissible voltage variation ranges between 190 and 230 volts for 200 volts and between 360 and 460 volts for 400 volts.

On-Truck Type

Battery		Input voltage (V)*	Output current (A)	Weight kg	1B2
Voltage	Capacity (AH)				
48	450	200	85	38	
48	485	200	100	43	
48	545	200	100	43	
48	565	200	100	43	
48	600	200	120	58	
48	700	200	120	58	
48	865	200	170	85	

*Permissible voltage variation ranges between 190 and 230 volts.

1B2-U

Unit Specification

		P1B2-U	PG1B2-U
CONTROLLER	Traction control	Transistor chopper	
	Hoist control	1 contactor	
	Field weakening system	Not equipped	
TRACTION MOTOR	Type	U/V/S-model	AC Induction
		E-model	AC Induction
	Voltage	48	
	Rated output W/1h	U/V/S-model	12
E-model		8.5	
HOIST PUMP MOTOR	Type	U/V/S-model	AC Induction
		E-model	AC Induction
	Voltage	48	
	Rated output W/1h	U/V/S-model	13.5
E-model		9.5	
STEERING WHEEL	Type	Fully hydrostatic power steering	
	Control	-	
	Steering gear type	-	
	Steering wheel	Tilting type	
DRIVE AXLE	Type	Full floating	
	Reduction gear type	Helical	
	Differential gear type	Bevel gear	
STEERING AXLE	Type	Elliot	
	Suspension type	Center pin,rubber mount type	
BRAKE SYSTEM	Service brake	Hydraulic duo-servo with auto-adjuster.Operates on drive wheel	
	Parking brake	Hoot type, mechanically operates on drive wheel	
	Lining material	Non-asbestos	
FRAME & BODY	Frame structure	Integral,All welded frame	
	Overhead guard	Strength conforms to ISO, ANSI standard	
HYDRAULIC SYSTEM	Hydraulic oil pump	Gear type	
	Control valve	Sectional type with main relief valve and tilt lock valve	
	Main releif valve set pressure	185 kg/cm2	
	Lift cylinder	with flow regulator valve	
	Suction filter	150-mesh,wire netting	
	Micron filter	20-micron paper type (Cartridge type)	
LOADING SYSTEM	Hydraulic tank capacity	44 liter	49 liter
	Mast	All roller mast, Grease sealed roller bearing	
	Carriage	Class	25:Class 30:Class
INSTRUMENTS	Forks	Forged alloy steel,Hook type,Conform to ITA standard	
	Meters	Hour meter, Battery capacity meter	
	Indicators	Pilot light, Low voltage lock light, Parking brake warning light, Brake fluid warning light	
	Switches	Lighting switch, Function switch	