

14-16t

G series Internal Combustion Counterbalanced Forklift Truck



GROS

14-16T

Performance specifications

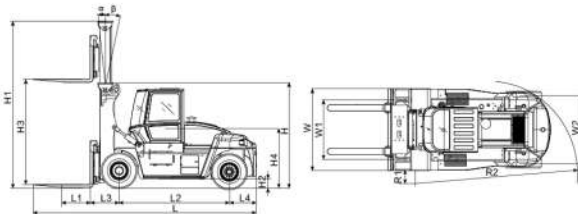
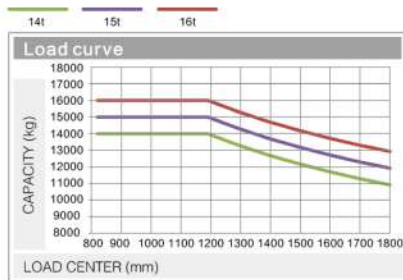
Model	Unit	CPCD140-C1Z-12IIIIG	CPCD150-C1Z-12IIIIG	CPCD160-C1Z-12IIIIG
Rated capacity	kg	14000	15000	16000
Load center	mm	1200		
Power type		Diesel engine		
Lifting speed (unloaded/loaded)	mm/s	370/400		
(Descending speed unloaded/loaded)	mm/s	400/400		
Max. Travelling speed (loaded/unloaded)	km/h	26/29		
Max. Gradeability (loaded/unloaded)	%	28/22		
Tire	Type (front/rear)	4/2 Pneumatic tire		
	Size	12.00-20-20PR/12.00-20-20PR		
Battery voltage/capacity	V/Ah	24/180		
Service brake		Wet braking		
Engine	Manufacture Model	QSB6.7		
	Rated output/ Speed	kW/rpm	142/2300	
	Max. torque/ Speed	Nm/rpm	925/1500	
	Cylinder number		6	
	Displacement	L	6.7	
Transmission gear shift (front/rear type)		3/3 Hydraulic reversing		





GROS

Size parameters				
Model		CPCD140-C1Z-12IIIIG	CPCD150-C1Z-12IIIIG	CPCD160-C1Z-12IIIIG
Overall length	mm	7975	7975	7975
Overall width	mm	2600	2600	2600
Overall height	mm	3340	3340	3340
Load center distance	mm	1200	1200	1200
Wheelbase	mm	3750	3750	3750
Minimum underground clearance	mm	275	275	275
Seat height	mm	1985	1985	1985
Turning radius(outside)	mm	5100	5100	5100
Front track	mm	1895	1895	1895
Rear track	mm	2120	2120	2120
Mast height (retracted/extended)	mm	3340/4840	3340/4840	3340/4840
Mast lifting height	mm	3000	3000	3000
Mast tilting angle (forward/backward)	deg	6/12	6/12	6/12
Fork dimension (length*width*thickness)	mm	2440x200x100	2440x200x100	2440x200x100
Fork adjusting range	mm	610-2150	610-2150	610-2150



Easy and high efficient daily inspection

- Cab electric tilting system**
 Automatic tilting system facilitates interior maintenance; Hydraulic drives tilting cylinder with electric assistance making cab tilt 60° right ward which makes maintenance easy.
- Engine hood with large opening angle**
 Open type engine hood which can be open through self-lock spring ensures easy and high efficient maintenance.

Wide view basic type mast							
Mast name	Max.fork Height (mm)	Loading capacity(load center1200mm)(kg)			Overall height (mm)	Tilt angle (F/B)	Remarks
		CPCD140	CPCD150	CPCD160			
M300	3000	14000	15000	16000	3340	6° /12°	standard equipment
M350	3500	14000	15000	16000	3590	6° /12°	
M400	4000	14000	15000	16000	3840	6° /12°	
M450	4500	14000	15000	16000	4090	6° /12°	
M500	5000	14000	15000	16000	4340	6° /10°	
M550	5500	13000	14000	15000	4590	3° /6°	
M600	6000	12000	13000	14000	4840	3° /6°	
M650	6500	11000	12000	13000	5090	3° /6°	

- Our products are constantly updated and improved. Parameters and design are subject to change without prior notice.
- The configuration and color of the products in figures may be different from the actual delivered model. Please in kind prevails.

ANHUI HELI CO., LTD.



Hydraulic brake system

- It uses imported advanced hydraulic parts and remote piloted control. It is highly reliable and comfortable, improving work efficiency.

Wet type drive axle

- **Maintenance free**
Specially designed structure and brake principle provides anti-dust and anti-water function and saves your maintenance cost.
- **Safe and reliable brake**
Working requirements such as Long time, high duty, short distance or frequent brake can be satisfied.



Vehicle configuration

01	Truck model		CPCD140-C1Z-12IIIIG	CPCD150-C1Z-12IIIIG	CPCD160-C1Z-12IIIIG
02	Engine	Brand	CUMMINS	CUMMINS	CUMMINS
		Model	QSB6.7	QSB6.7	QSB6.7
		Rated power (kw/rpm)	142/2300	142/2300	142/2300
		Rated torque (nm/rpm)	930/1500	930/1500	930/1500
		Emission standard	EU Stage III	EU Stage III	EU Stage III
03	Transmission	Model	ZF171	ZF171	ZF171
04	Drive axle	Model	Kessler	Kessler	Kessler
05	Tire	Size	12.00-20	12.00-20	12.00-20
06	Auxiliary configuration	Backward radar	●	●	●
		Backward image	●	●	●
		Weighting system	○	○	○
		Ops for the whole truck	○	○	○
		Ops for mast	○	○	○
07	Hydraulic system	Consistent rate system	/	/	/
		Variable system	●	●	●
08	Air conditioner	Air conditioner	●	●	●
09	Tyre	Pneumatic tyre	●	●	●
		Solid tyre	○	○	○
		Solid tyre (front), pneumatic tyre (rear)	○	○	○
		Pneumatic tyre (front), solid tyre (rear)	○	○	○
10	Cab	Tilting cab	●	●	●

●-Standard item ○-Optional item /-Not used

HELI smart fleet management system (optional)

- Vehicle positioning
- Remote diagnosis
- Remote monitoring
- Maintenance reminder
- Battery management
- Statistical form
- Vehicle management
- Identification recognition (optional)
- Weight management (optional)





Wide view and High Strength Lifting System

- Excellent front view which is benefit for the work safety improvement and working efficiency is provide with wide view mast which has proprietary intellectual property and fork positioner with side shifting.

Engine System

- Cummins QSB6.7 发动机 Cummins QSB6.7 engine
Six cylinder four stroke turbocharged engine which is powerful, reliable, and economic and meets China III is assembled on the truck.



Gearbox

- ZF transmission box
Smooth gear shifting without shock.
Intelligent gear shifting mode is easier.
High efficient power match is more energy saving.



制动性能优越 Excellent Braking Performance

- 整车具有优异、可靠的制动性能，在各种场地条件下，行车制动和停车制动均操作平衡。
- The whole vehicle has excellent and reliable braking performance and the service brake and parking brake are operated smoothly and stably under various field conditions.