

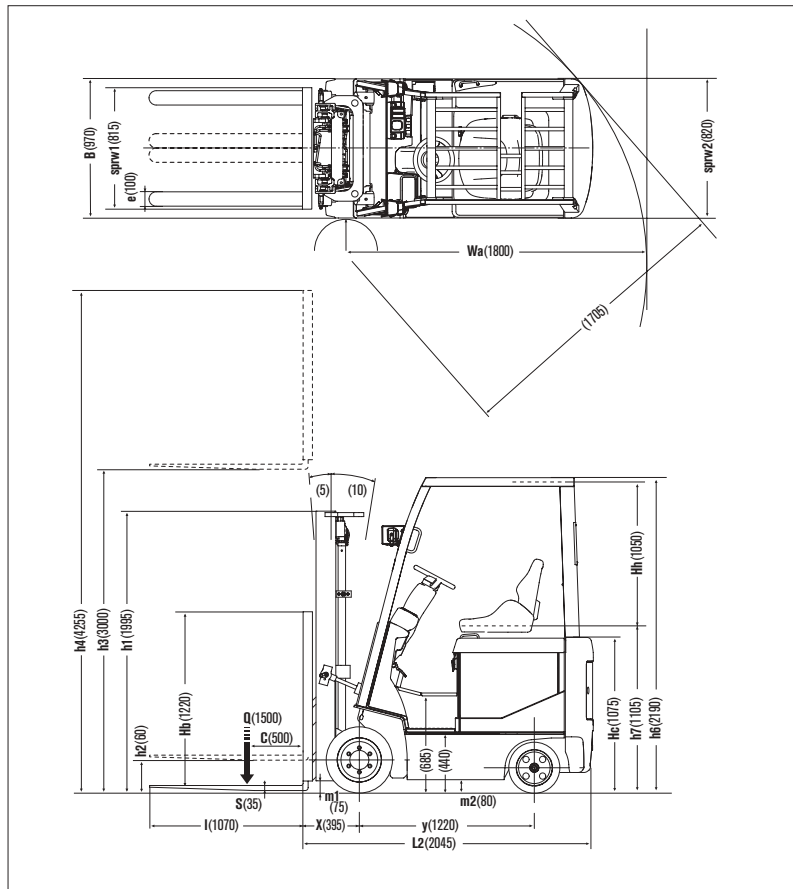
C1B1 U-model

1.5

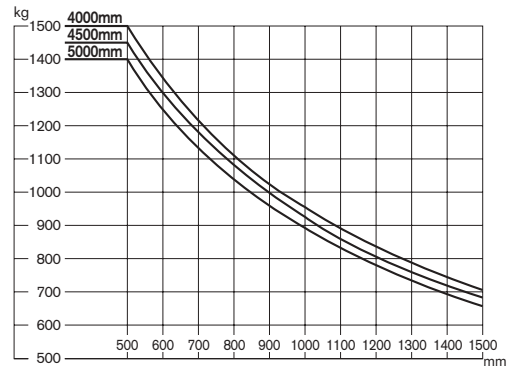
1.8ton
at 500mm
Load Center

C1B1-U

Dimensions



Load Capacity Chart



No capacity reduction until 4000 mm height. Load capacities are computed with following conditions, a) Standard 2W Mast and b) Mast in vertical position.

Tire and Tread Specifications

Front Tire	single
Front Tire Size	18 x 6 x 12-1/8
Overall Width	mm 970
Front Tread	mm 815

Ground Clearance

Under mast	mm	75
Under frame	mm	80

Mast Specifications & Rated Capacities

CK1B1L15U

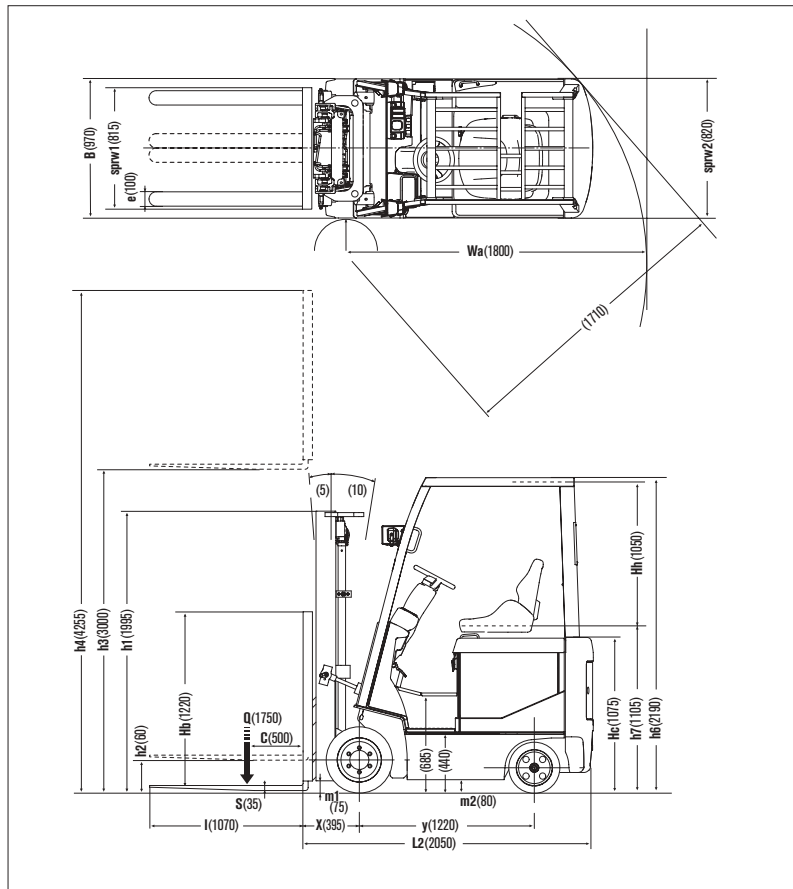
Mast type	Mast name	Max. fork Height mm	Overall height			Free lift		Front overhang mm	Tilt angle Forward/ Backward deg	Capacity Single tire Load center 500mm Kg
			Fully lowered mm	Fully extended		Without backrest mm	With STD backrest mm			
				Without backrest mm	With STD backrest mm					
Two stage (Wide view 2W)	2W270	2700	1805	3310	3955	60	60	395	5/10	1500
	2W300	3000	1955	3610	4255					1500
	2W330	3300	2105	3910	4555					1500
	2W350	3500	2240	4110	4755					1500
	2W370	3700	2365	4310	4955					1500
	2W400	4000	2555	4610	5255					1500
	2W450	4500	2805	5110	5755					1450
2W500	5000	3055	5610	6255	1400					
Two stage (Full free 2F)	2F270	2700	1805	3315	3955	1190	550	390	5/10	1500
	2F300	3000	1955	3615	4255	1340	700			1500
	2F330	3300	2105	3915	4555	1490	850			1500
	2F350	3500	2240	4115	4755	1625	985			1500
	2F370	3700	2365	4315	4955	1750	1110			1500
	2F400	4000	2555	4615	5255	1960	1320			1500
Three stage (Full free 3F)	3F385	3850	1805	4465	5105	1190	550	390	5/5	1500
	3F430	4300	1955	4915	5555	1340	700			1400
	3F475	4750	2105	5365	6005	1490	850			1300
	3F515	5150	2240	5770	6410	1625	985			1200
	3F550	5500	2365	6115	6755	1750	1110			1100
	3F600	6000	2555	6615	7255	1940	1300			750

Main Truck Specifications

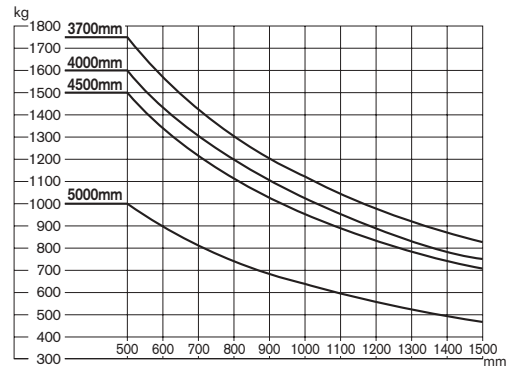
		Item			CK1B1L15U				
SPECIFICATIONS	1	Manufacturer			NISSAN		1		
	2	Model			CK1B1L15U		2		
	3	Load capacity	Q	Load lifted	kg	1500		3	
	4	Load center	C	Distance	mm	500		4	
	5	Power unit		Battery, diesel, Gasoline, LP gas		BAT		5	
	6	Operator type		Walkie, rider/stand, rider/seat		Rider / seat		6	
	7	Tire type			front/rear	CUSH		7	
	8	Wheels(X=driven)		Number	front/rear	2 x / 2		8	
DIMENSIONS	9	Maximum fork height	h3	Standard lift height	mm	3000		9	
	10	Free lift	h2	Standard free lift	mm	60		10	
	13	Fork size		s.e.l	mm	35 x 100 x 1070		13	
		Max. Fork Spread			mm	805			
		Min. Fork Spread			mm	205			
	14	Tilt range	/	Mast forward/backward	deg	5 / 10		14	
	15	Overall measurement	L2	Length to fork face	mm	2045		15	
	16		B	Overall width	mm	970		16	
	17		h1	Height mast retracted	mm	1955		17	
	18		h4	Height mast extended	mm	4255		18	
	19		h6	Height overhead guard	mm	2190		19	
	20		h7	Height of driver's seat	mm	1105		20	
	21	Turning radius (outside)	Wa		mm	1800		21	
22	Load distance	X	From center of front axle	mm	395		22		
23	Right angle stacking aisle		Ast pallets (L x W) 1200 x 800/1000 x 1200	mm	3595 / 3395		23		
PERFORMANCE	24	Speeds	Travelling	full load	km/h	14.5		24	
	no load			km/h	17.0				
	25		Lifting	full load	mm/s	435		25	
				no load	mm/s	640			
	26		Lowering	full load	mm/s	500		26	
				no load	mm/s	495			
28	Max. drawber pull		full/no load	N	12045		28		
29	Gradeability at 2km/h		full/no load	%	24		29		
30	Max. gradeability		full/no load	%	-		30		
WEIGHTS	32	Truck weight		no load	kg	2940		32	
	33	Weight distribution		full load	front/rear	kg	3825 / 615		33
				no load	front/rear	kg	1225 / 1715		
34								34	
CHASSIS & WHEELS	35		Number.	front/rear	each	2 / 2		35	
	36	Tires		Size-front		18 x 6 x 12-1/8		36	
				Size-rear		14 x 5 x 10			
	37							37	
	38	Wheelbase	y		mm	1220		38	
	39	Tread	sprw	1/sprw 2	front/rear	mm	815 / 820		39
		Backrest height	Hb	top of backrest - upper of fork face	mm	1220			
		Overhead guard clearance	Hh		mm	1050			
		Counter weight height	Hc		mm	1075			
	40	Ground clearance	m1	Full load minimum	mast	mm	75		40
	41		m2	Full load center of wheelbase		mm	80		41
42	Service brake		Mechanical/hydraulic/electric/pneu			Hyd. / Elec		42	
43	Parking brake		Foot/hand/seat switch			Foot		43	
DRIVE LINE	45	Battery	Voltage/Capacity (5 hour)	min	V/AH	48 / 450		45	
				max	V/AH	48 / 600			
	46		weight(STD capacity type)	min-max	kg	835-1150		46	
	47		drive		KW	9		47	
	48	Electric motors		Load handling		KW	11		48
				Power steering		KW	-		
	54	Control type		drive			MOS-INV		54
			Load handling			MOS-INV			
			Power steering			-			
57	Operating pressure		for attachment		MPa	12.7		57	

C1B1-U

Dimensions



Load Capacity Chart



No capacity reduction until 3700 mm height. Load capacities are computed with following conditions, a) Standard 2W Mast and b) Mast in vertical position.

Tire and Tread Specifications

Front Tire	single
Front Tire Size	18 x 6 x 12-1/8
Overall Width	mm 970
Front Tread	mm 815

Ground Clearance

Under mast	mm	75
Under frame	mm	80

Mast Specifications & Rated Capacities

CK1B1L18U

Mast type	Mast name	Max. fork Height mm	Overall height			Free lift		Front overhang mm	Tilt angle Forward/ Backward deg	Capacity Single tire Load center 500mm Kg
			Fully lowered mm	Fully extended		Without backrest mm	With STD backrest mm			
				Without backrest mm	With STD backrest mm					
Two stage (Wide view 2W)	2W270	2700	1805	3310	3955	60	60	395	5/10	1750
	2W300	3000	1955	3610	4255					1750
	2W330	3300	2105	3910	4555					1750
	2W350	3500	2240	4110	4755					1750
	2W370	3700	2365	4310	4955					1750
	2W400	4000	2555	4610	5255					1600
	2W450	4500	2805	5110	5755					1500
	2W500	5000	3055	5610	6255					1000
Two stage (Full free 2F)	2F270	2700	1805	3315	3955	1190	550	390	5/10	1750
	2F300	3000	1955	3615	4255	1340	700			1750
	2F330	3300	2105	3915	4555	1490	850			1750
	2F350	3500	2240	4115	4755	1625	985			1750
	2F370	3700	2365	4315	4955	1750	1110			1750
	2F400	4000	2555	4615	5255	1960	1320			1600
Three stage (Full free 3F)	3F385	3850	1805	4465	5105	1190	550	390	5/5	1600
	3F430	4300	1955	4915	5555	1340	700			1500
	3F475	4750	2105	5365	6005	1490	850			1250
	3F515	5150	2240	5770	6410	1625	985			1000
	3F550	5500	2365	6115	6755	1750	1110			800
	3F600	6000	2555	6615	7255	1940	1300			600

Main Truck Specifications

		Item			CK1B1L18U				
SPECIFICATIONS	1	Manufacturer			NISSAN		1		
	2	Model			CK1B1L18U		2		
	3	Load capacity	Q	Load lifted	kg	1750		3	
	4	Load center	C	Distance	mm	500		4	
	5	Power unit		Battery, diesel, Gasoline, LP gas		BAT		5	
	6	Operator type		Walkie, rider/stand, rider/seat		Rider / seat		6	
	7	Tire type			front/rear	CUSH		7	
	8	Wheels(X=driven)		Number	front/rear	2 x / 2		8	
DIMENSIONS	9	Maximum fork height	h3	Standard lift height	mm	3000		9	
	10	Free lift	h2	Standard free lift	mm	60		10	
	13	Fork size		s.e.l	mm	35 x 100 x 1070		13	
		Max. Fork Spread			mm	805			
		Min. Fork Spread			mm	205			
	14	Tilt range	/	Mast forward/backward		deg	5 / 10		14
	15	Overall measurement	L2	Length to fork face	mm	2050		15	
	16		B	Overall width	mm	970		16	
	17		h1	Height mast retracted	mm	1955		17	
	18		h4	Height mast extended	mm	4255		18	
	19		h6	Height overhead guard	mm	2190		19	
	20		h7	Height of driver's seat	mm	1105		20	
	21	Turning radius (outside)	Wa		mm	1800		21	
22	Load distance	X	From center of front axle	mm	395		22		
23	Right angle stacking aisle		Ast pallets (L x W) 1200 x 800/1000 x 1200		mm	3595 / 3395		23	
PERFORMANCE	24	Speeds	Travelling	full load	km/h	14.5		24	
	no load			km/h	16.5				
	25		Lifting	full load	mm/s	390		25	
				no load	mm/s	640			
	26		Lowering	full load	mm/s	500		26	
				no load	mm/s	495			
28	Max. drawber pull		full/no load	N	12045		28		
29	Gradeability at 2km/h		full/no load	%	21.5		29		
30	Max. gradeability		full/no load	%	-		30		
WEIGHTS	32	Truck weight		no load	kg	3115		32	
	33	Weight distribution		full load	front/rear	kg	4210 / 655		33
				no load	front/rear	kg	1180 / 1935		
34							34		
CHASSIS & WHEELS	35		Number.	front/rear	each	2 / 2		35	
	36	Tires		Size-front		18 x 6 x 12-1/8		36	
				Size-rear		14 x 5 x 10			
	37							37	
	38	Wheelbase	y		mm	1220		38	
	39	Tread	sprw	1/sprw 2	front/rear	mm	815 / 820		39
		Backrest height	Hb	top of backrest - upper of fork face		mm	1220		
		Overhead guard clearance	Hh		mm	1050			
		Counter weight height	Hc		mm	1075			
	40	Ground clearance	m1	Full load minimum	mast	mm	75		40
	41		m2	Full load center of wheelbase		mm	80		41
42	Service brake		Mechanical/hydraulic/electric/pneu			Hyd. / Elec		42	
43	Parking brake		Foot/hand/seat switch			Foot		43	
DRIVE LINE	45	Battery	Voltage/Capacity		min	V/AH	48 / 450		45
			(5 hour)		max	V/AH	48 / 600		
	46		weight(STD capacity type)		min-max	kg	835-975		46
	47		drive		KW	9		47	
	48	Electric motors	Load handling			KW	11		48
			Power steering			KW	-		
	54	Control type	drive				MOS-INV		54
	Load handling				MOS-INV				
	Power steering				-				
57	Operating pressure		for attachment		MPa	12.7		57	

C1B1-U

Loading Capacity

CK1B1L15U

Unit:kg

Load center		500mm	600	700	800	900	1000	1100	1200	1300	1400	1500
Mast name												
STANDARD	2W 270	1500	1345	1225	1120	1035	960	895	840	790	745	705
	2W 300	1500	1345	1225	1120	1035	960	895	840	790	745	705
	2W 330	1500	1345	1225	1120	1035	960	895	840	790	745	705
	2W 350	1500	1345	1225	1120	1035	960	895	840	790	745	705
	2W 370	1500	1345	1225	1120	1035	960	895	840	790	745	705
	2W 400	1500	1345	1225	1120	1035	960	895	840	790	745	705
	2W 450	1450	1300	1180	1085	1000	925	865	810	765	720	680
	2W 500	1400	1255	1140	1045	965	895	835	785	735	695	660
	2F 270	1500	1345	1220	1120	1030	960	895	835	785	745	705
	2F 300	1500	1345	1220	1120	1030	960	895	835	785	745	705
	2F 330	1500	1345	1220	1120	1030	960	895	835	785	745	705
	2F 350	1500	1345	1220	1120	1030	960	895	835	785	745	705
	2F 370	1500	1345	1220	1120	1030	960	895	835	785	745	705
	2F 400	1500	1345	1220	1120	1030	960	895	835	785	745	705
	3F 385	1500	1350	1225	1125	1035	960	900	840	790	750	710
	3F 430	1400	1260	1145	1050	965	900	840	785	740	700	660
	3F 475	1300	1170	1060	975	900	835	780	730	685	650	615
	3F 515	1200	1080	980	900	830	770	720	675	635	600	565
3F 550	1100	990	900	825	760	705	660	615	580	550	520	
3F 600	750	675	610	560	515	480	450	420	395	375	355	

CK1B1L18U

Unit:kg

Load center		500mm	600	700	800	900	1000	1100	1200	1300	1400	1500
Mast name												
STANDARD	2W 270	1750	1570	1430	1310	1205	1120	1045	980	920	870	825
	2W 300	1750	1570	1430	1310	1205	1120	1045	980	920	870	825
	2W 330	1750	1570	1430	1310	1205	1120	1045	980	920	870	825
	2W 350	1750	1570	1430	1310	1205	1120	1045	980	920	870	825
	2W 370	1750	1570	1430	1310	1205	1120	1045	980	920	870	825
	2W 400	1600	1435	1305	1195	1105	1025	955	895	840	795	755
	2W 450	1500	1345	1225	1120	1035	960	895	840	790	745	705
	2W 500	1000	895	815	745	690	640	595	560	525	495	470
	2F 270	1750	1570	1425	1305	1205	1120	1040	975	920	865	820
	2F 300	1750	1570	1425	1305	1205	1120	1040	975	920	865	820
	2F 330	1750	1570	1425	1305	1205	1120	1040	975	920	865	820
	2F 350	1750	1570	1425	1305	1205	1120	1040	975	920	865	820
	2F 370	1750	1570	1425	1305	1205	1120	1040	975	920	865	820
	2F 400	1600	1435	1305	1195	1100	1020	955	895	840	795	750
	3F 385	1600	1440	1305	1200	1105	1025	960	900	845	800	755
	3F 430	1500	1350	1225	1125	1035	960	900	840	790	750	710
	3F 475	1250	1125	1020	935	865	800	750	700	660	625	590
	3F 515	1000	900	815	750	690	640	600	560	525	500	470
3F 550	800	720	650	600	550	510	480	450	420	400	375	
3F 600	600	540	490	450	415	385	360	335	315	300	280	

Truck Weight (Less Battery)

(kg)

Mast type	Mast name	CK1B1L15U	CK1B1L18U
		STD	STD
Two stage (Wide view 2W)	2W270	2085	2265
	2W300	2105	2280
	2W330	2125	2300
	2W350	2140	2320
	2W370	2175	2355
	2W400	2200	2375
	2W450	2230	2410
	2W500	2260	2440
Two stage (Full free 2F)	2F270	2110	2295
	2F300	2135	2315
	2F330	2155	2335
	2F350	2170	2355
	2F370	2205	2390
	2F400	2235	2420
Three stage (Full free 3F)	3F385	2250	2430
	3F430	2280	2455
	3F475	2305	2485
	3F515	2335	2510
	3F550	2375	2550
	3F600	2410	2585
Truck weight without mast		1600	1775

Additional Truck Weight

Smooth-Run System

	15-18	
	(KG)	(LBS)
Goodrun	+15	+35

Forks

Length mm (in)	Model	15-U	18-U
	Less fork	-80	-80
	850 (33.5)	-15	-15
	920 (36.2)	-10	-10
Fork	1000 (39.4)	-5	-5
	1070 (42.1)	± 0	± 0
	1150 (45.3)	+5	+5
	1220 (48.0)	+5	+10
	1370 (53.9)	+15	+15

C1B1-U

Supplement Data

Standard Specifications

Item	Model		C1B1
MOTOR	Traction motor	Type	AC induction
	Hoist pump motor	Type	AC induction
	P.S. motor	Type	

High travel speed/High lifting speed model specifications

Item	Model				CK1B1L15U	CK1B1L18U
PERFORMANCE	Travel speed	Forward	full load	km/h	14.5	14.5
			no load	km/h	17.0	16.5
	Lifting Speed	2W mast	full load	mm/sec	435	390
			no load	mm/sec	640	640

Fork Availability

Length mm (in)	Model		C15,18-U
	...Standard	...Option	
Fork	Less fork		
	850		
	920		
	1000		
	1070		
	1150		
	1220		
	1370		
Extension fork	1520		
	1000		(C15)
	1100		(C15)
	1200		
	1300		
	1500		
	1700		
1800			
2000			

Right Angle Stacking Aisle [Ast] Mast 2W

Pallet size length (b) x width	Model		Unit:mm
	CK1B1L15U	CK1B1L18U	
1000 x 1200	3395	3395	
1200 x 800	3595	3595	

Option Availability

		...Standard	...Option
Item		C1B1-U	
Battery	Less battery		
	Battery (Wet type)		
	Spare battery (Dry type)		
	Battery case		
	Battery connector	EC type	
		Standard type	
Battery charger	Microcomputer-controlled one-touch charger	OFF-truck type	
		ON-truck type	
Instruments	Liquid crystal display	Battery capacity meter	
		Hour meter	
		Digital clock	
		Warning display	
		Speedometer	
		Mode Indicator	
Warning buzzer	Back-up buzzer		
	Parking brake warning buzzer		
Light	Head lights (without guard)		
	Turn signal lamps		
	Rear combination lamps		
	Rear working lamp		
Tires	Rib-lug tire		
	J-lug tire (Textile)		
	Pneumatic type solid tire		
	Double tire		
	Cushion tire		
	Wide tread		
Body	Floor mat		
	Rain guard		
	Rearview mirror		
Seat	Hip support seat		
Loading mechanism	2W mast		
	2F mast		
	3F mast		
	Mast less		
	Wide carriage		
	High backrest		
	Wide and high backrest		
	Backrest less		
	Tilt cylinder boots		
	Long fork		
	Extension fork		
	Fork less		
	Smooth-Run System		
Hydraulic system	2 spool valve		
	3 spool valve		
	4 spool valve		
	Single control lever		
	Double control lever		
	3 spool piping to carriage		
4 spool piping to carriage			
Tool	Tool kit		
	Tool kit with jack		
Label	English		
	German		
	French		
	Spanish		
Attachment	Side shift (3 spool)		
	Rotating fork (3 spool)		
	Rotating clamp (4 spool)		
	Fork positioner (4 spool)		
F/R lever	Right-side F/R lever		

C1B1-U

Fork Dimensions

	Width [W] × Thickness [T] mm (in)			
	C1B1U 15	C1B1U 18	C1B1S/E 15	C1B1S/E 18
850 (33.5)	100x35	100x35		
920 (36.2)	100x35	100x35	100x40	100x40
1000 (39.4)	100x35	100x35		
1070 (42.1)	100x35	100x35	100x40	100x40
1150 (45.3)	100x35	100x35		
1220 (48.0)	100x35	100x38	100x40	100x40
1370 (53.9)	100x35	100x38	100x40	100x40
1520 (59.8)			100x40	100x40

Carriage & Backrest Dimensions

Carriage

Model		C1B1 15-18
Class		Class
Number of rollers		6
Carriage width [W] mm	Standard	823
	Wide	
Max. fork spread mm	Standard	803
	Wide	

Backrest

Model		C1B1 15-18
Backrest height [H] mm	Standard	
	High backrest	1255
Backrest width [L] mm	Standard	
	High backrest	850
Plate thickness [T] mm		12.7

Tire Size

				Model	CK1B1
Tire					15-18
Front	Single	Tire size (STD)			18x6x12-1/8
		Type	Standard		
			Wide		
Rear	Single	Tire size (STD)			14x5x10
		Standard			

Battery Selection Guide

Battery and Battery Case Specifications

		CK1B1L15U	CK1B1L18U
Voltage (V)		48	48
Battery connector type	General	Anderson SB350 (Gray)	
	CE area	Anderson SBE320 (Blue)	
Max. Battery Compartment Size (mm)	Width	893	893
	Length	678	678
	Height	595	595

Battery and Battery Case Specifications

Unit:kg

Model	Body type	Min.	Max.
CK1B1L15U	Standard compartment	835	1150
CK1B1L18U	Standard compartment	835	975

Recommended Battery Case

Unit:mm

Model	Width	Length	Height
CK1B1L15U	885	670	578
CK1B1L18U			

C1B1-U

Unit Specification

		CK1B1-U	
CONTROLLER	Traction control	Transistor chopper	
	Hoist control	1 contactor	
	Field weakening system	Not equipped	
TRACTION MOTOR	Type	U/V/S-model	AC Induction
		E-model	AC Induction
	Voltage		48
	Rated output W/1h	U/V/S-model	9
E-model		8.5	
HOIST PUMP MOTOR	Type	U/V/S-model	AC Induction
		E-model	AC Induction
	Voltage		48
	Rated output W/1h	U/V/S-model	11
E-model		9.5	
STEERING WHEEL	Type	Fully hydrostatic power steering	
	Control		
	Steering gear type		
	Steering wheel	Tilting type	
DRIVE AXLE	Type	Full floating	
	Reduction gear type	Helical	
	Differential gear type	Bevel gear	
STEERING AXLE	Type	Elliot	
	Suspension type	Center pin,rubber mount type	
BRAKE SYSTEM	Service brake	Hydraulic duo-servo with auto-adjuster. Operates on drive wheel	
	Parking brake	Hoot type, mechanically operates on drive wheel	
	Lining material	Non-asbestos	
FRAME & BODY	Frame structure	Integral, All welded frame	
	Overhead guard	Strength conforms to ISO, ANSI standard	
HYDRAULIC SYSTEM	Hydraulic oil pump	Gear type	
	Control valve	Sectional type with main relief valve and tilt lock valve	
	Main relief valve set pressure	170 kg/cm ²	
	Lift cylinder	with flow regulator valve	
	Suction filter	150-mesh, wire netting	
	Micron filter	20-micron paper type (Cartridge type)	
	Hydraulic tank capacity	25liter	
LOADING SYSTEM	Mast	All roller mast, Grease sealed roller bearing	
	Carriage	Class	
	Forks	Forged alloy steel,Hook type,Conform to ITA standard	
INSTRUMENTS	Meters	Hour meter, Battery capacity meter	
	Indicators	Pilot light, Low voltage lock light, Parking brake warning light, Brake fluid warning light	
	Switches	Lighting switch, Function switch	