

AL01/02

U-model

1.6

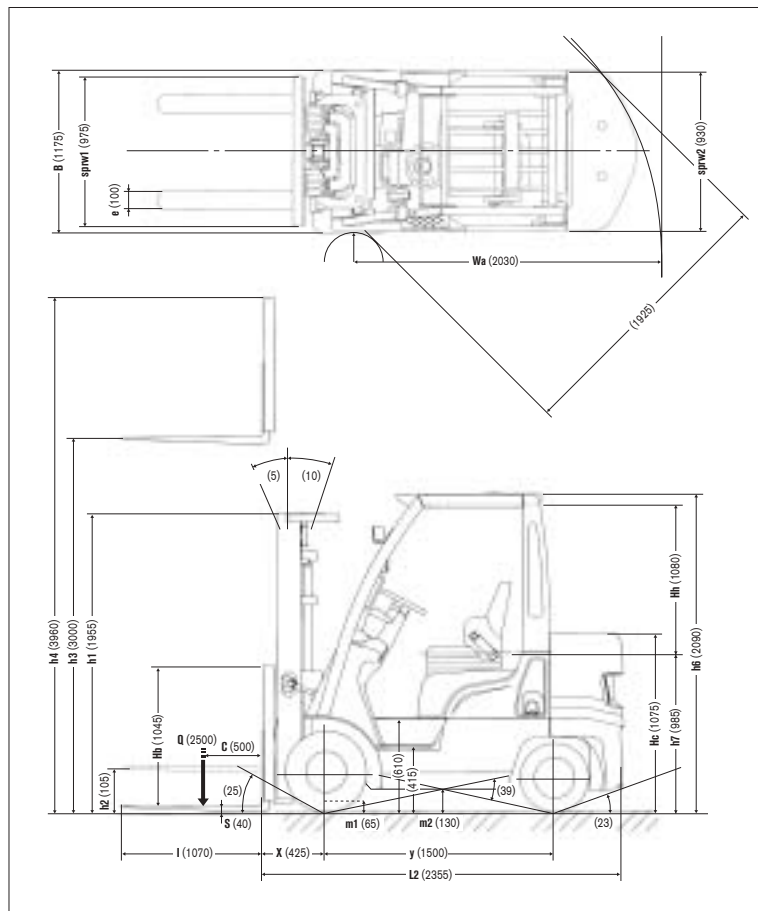
2.5ton
at 500mm
Load Center

Main Truck Specifications

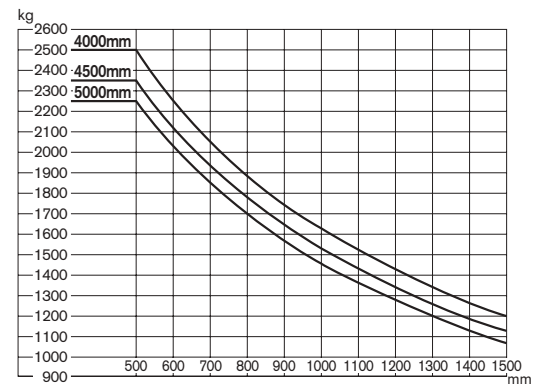
					AL01A16JU	AL01A16DU			
		Item							
SPECIFICATIONS	1	Manufacturer			NISSAN	NISSAN		1	
	2	Model			AL01A16JU	AL01A16DU		2	
	3	Load capacity	Q	load lifted	kg	1600	1600		3
	4	Load center	C	distance	mm	500	500		4
	5	Power unit		battery, diesel, gasoline, LP gas		Gasoline	Gasoline/LPG		5
	6	Operator type		walkie, rider/stand, rider/seat		Rider/seat	Rider/seat		6
	7	Tire type		front/rear		PNE / PNE	PNE / PNE		7
	8	Wheels(X=driven)		number front/rear		2X / 2	2X / 2		8
DIMENSIONS	9	Maximum fork height	h3	standard lift height	mm	3000	3000		9
	10	Free lift	h2	standard free lift	mm	155	155		10
	13	Fork size		s.e.l	mm	35 x 100 x 1070	35 x 100 x 1070		13
		Max. Fork Spread			mm	900	900		
		Min. Fork Spread			mm	205	205		
	14	Tilt range	/	mast forward/backward	deg	5/10	5/10		14
	15	Overall measurement	L2	length to fork face	mm	2140	2140		15
	16		B	overall width	mm	1035	1035		16
	17		h1	height mast retracted	mm	1990	1990		17
	18		h4	height mast extended	mm	3960	3960		18
	19		h6	height overhead guard	mm	2105	2105		19
	20		h7	height of driver's seat	mm	1000	1000		20
	21	Turning radius (outside)	Wa		mm	1850	1850		21
22	Load distance	X	from center of front axle	mm	390	390		22	
23	Right angle stacking aisle		Ast pallets (L x W) 1200 x 800 / 1000 x 1200	mm	3640/3440	3640/3440		23	
PERFORMANCE	24	Speeds	travelling	full load	km/h	17	17		24
	no load			km/h	17	17			
	lifting		full load	mm/s	600	600		25	
			no load	mm/s	630	630			
	lowering		full load	mm/s	500	500		26	
			no load	mm/s	500	500			
28	Max. drawbar pull		full load / no load	N	13250/10600	13250/10600		28	
29	Gradeability at 2km/h		full load / no load	tan %	31/-	31/-		29	
30	Max. gradeability		full load / no load	tan %	36/28	36/28		30	
WEIGHTS	32	Truck weight		no load	kg	2665	2665		32
	33	Weight distribution		full load	front/rear	kg	3705/560	3705/560	33
	34			no load	front/rear	kg	1000/1665	1000/1665	34
CHASSIS & WHEELS	35			number.	front/rear	each	2 / 2	2 / 2	35
	36	Tires		size-front			6.00-9-12PR	6.00-9-12PR	36
	37			size-rear			5.00-8-8PR	5.00-8-8PR	37
	38	Wheelbase	y		mm	1290	1290		38
	39	Tread	sprw 1/sprw 2	front/rear	mm	870/885	870/885		39
		Backrest height	Hb	top of backrest ~ upper of fork face	mm	945	945		
		Overhead guard clearance	Hh		mm	1080	1080		
		Counterweight height	Hc		mm	1190	1190		
	40	Ground clearance	m1	full load minimum	mm	95	95		40
	41		m2	full load center of wheelbase	mm	140	140		41
42	Service brake		mechanical/hydraulic/electric/pneum		hydraulic	hydraulic		42	
43	Parking brake		foot/hand/seat switch		hand	hand		43	
DRIVE LINE	45	Battery		voltage/capacity (5 hour)	V/AH	12/27	12/27		45
	49			manufacturer/type		NISSAN / K15	NISSAN / K15		49
	50	Internal Combustion engine		maximum engine rated power	kW/rpm	31/2800	31/2800		50
	51			maximum engine rated torque	Nm/rpm	113/2400	113/2400		51
	52			number of cylinders/displacement	/cc	4/1486	4/1486		52
55	Transmission		type		Automatic	Automatic		55	
57			speed	forward/backward		1/1	1/1		
	Operating pressure		for attachment	MPa	12.7	12.7		57	

AL01/02-U

Dimensions



Load Capacity Chart



No capacity reduction until 4000 mm height. Load capacities are computed with following conditions, a) Standard 2W Mast and b) Mast in vertical position.

Tire and Tread Specifications

		AL02
		APL02A25JU/DU
Front Tire		Single
Front Tire Size		21 x 8-9-14PR
Overall Width	mm	1175
Front Tread	mm	975

Ground Clearance

		AL02
		APL02A25JU/DU
Under mast	mm	75
Under power unit	mm	65
Under frame	mm	130

Mast Specifications & Rated Capacities

APL02A25JU, APL02A25DU

Mast type	Mast name	Max. fork Height mm	Overall height			Free lift		Front overhang mm	Tilt angle Forward/ Backward deg	Capacity Single tire Load center 500 mm kg
			Fully lowered mm	Fully extended		Without backrest mm	With STD backrest mm			
				Without backrest mm	With STD backrest mm					
Two stage (Wide View 2W)	2W270	2700	1805	3320	3745	105	105	425	5/10	2500
	2W300	3000	1955	3620	4045	105	105		5/10	2500
	2W330	3300	2105	3920	4345	105	105		5/10	2500
	2W350	3500	2240	4120	4595	105	105		5/10	2500
	2W370	3700	2365	4320	4745	105	105		5/10	2500
	2W400	4000	2555	4620	5045	105	105		5/10	2500
	2W450	4500	2805	5120	5545	105	105		5/5	2350
	2W500	5000	3055	5620	6045	105	105		5/5	2250
Two stage (Full free 2F)	2F 300	3000	1955	3620	4045	1375	950	425	5/10	2500
	2F 330	3300	2105	3920	4345	1525	1100		5/10	2500
	2F 350	3500	2240	4120	4545	1660	1235		5/10	2500
	2F 370	3700	2365	4320	4745	1785	1360		5/10	2500
	2F 400	4000	2555	4620	5045	1975	1555		5/10	2450
Three stage (Full free 3F)	3F 385	3850	1805	4470	4895	1225	800	410	5/5	2500
	3F 430	4300	1955	4920	5345	1375	950		5/5	2400
	3F 475	4750	2105	4370	5795	1525	1100		5/5	2200
	3F 515	5150	2240	5770	6195	1660	1235		5/5	1950
	3F 550	5500	2365	6120	6545	1785	1360		5/5	1800
	3F 600	6000	2555	6620	7045	1975	1550		5/5	1550
	3F 650	6500	2805	7120	7545	2225	1800		5/5	1350
	3F 700	7000	3055	7620	8045	2475	2050		5/5	1000

Main Truck Specifications

					APL02A25JU	APL02A25DU				
		Item								
SPECIFICATIONS	1	Manufacturer			NISSAN		NISSAN			
	2	Model			APL02A25JU		APL02A25DU			
	3	Load capacity	Q	load lifted	kg	2500		2500		
	4	Load center	C	distance	mm	500		500		
	5	Power unit		battery, diesel, gasoline, LP gas		Gasoline		Gasoline/LPG		
	6	Operator type		walkie, rider/stand, rider/seat		Rider/seat		Rider/seat		
	7	Tire type		front/rear		PNE / PNE		PNE / PNE		
	8	Wheels(X=driven)		number	front/rear	2X / 2		2X / 2		
DIMENSIONS	9	Maximum fork height	h3	standard lift height	mm	3000		3000		
	10	Free lift	h2	standard free lift	mm	105		105		
	13	Fork size		s.e.l	mm	40 x 100 x 1070		40 x 100 x 1070		
		Max. Fork Spread			mm	1000		1000		
		Min. Fork Spread			mm	250		250		
	14	Tilt range	/	mast forward/backward	deg	5/10		5/10		
	15	Overall measurement	L2	length to fork face	mm	2355		2355		
	16		B	overall width	mm	1175		1175		
	17		h1	height mast retracted	mm	1955		1955		
	18		h4	height mast extended	mm	3960		3960		
	19		h6	height overhead guard	mm	2090		2090		
	20		h7	height of driver's seat	mm	985		985		
	21		Turning radius (outside)	Wa		mm	2030		2030	
22	Load distance	X	from center of front axle	mm	425		425			
23	Right angle stacking aisle		Ast pallets (L x W) 1200 x 800 / 1000 x 1200	mm	3855/3655		3855/3655			
PERFORMANCE	24	Speeds	travelling	full load	km/h	17		17		
	no load			km/h	17		17			
	25		lifting	full load	mm/s	620		620		
				no load	mm/s	650		650		
	26		lowering	full load	mm/s	500		500		
				no load	mm/s	500		500		
28	Max. drawbar pull		full load / no load	N	16660/9700		16660/9700			
29	Gradeability at 2km/h		full load / no load	tan %	28/-		28/-			
30	Max. gradeability		full load / no load	tan %	33/21		33/21			
WEIGHTS	32	Truck weight		no load	kg	3565		3565		
	33	Weight distribution		full load	front/rear	kg	5355/710		5355/710	
				no load	front/rear	kg	1315/2250		1315/2250	
	34			number.	front/rear	each	2/2		2/2	
CHASSIS & WHEELS	36	Tires		size-front		21X8-9-14PR		21X8-9-14PR		
				size-rear		18X7-8-14PR		18X7-8-14PR		
	38	Wheelbase	y		mm	1500		1500		
39	Tread	sprw 1/sprw 2	front/rear	mm	975/930		975/930			
	Backrest height	Hb	top of backrest ~ upper of fork face	mm	1045		1045			
	Overhead guard clearance	Hh		mm	1080		1080			
	Counterweight height	Hc		mm	1075		1075			
40	Ground clearance	m1	full load minimum	mm	65		65			
41		m2	full load center of wheelbase	mm	130		130			
42	Service brake		mechanical/hydraulic/electric/pneum		hydraulic		hydraulic			
43	Parking brake		foot/hand/seat switch		hand		hand			
DRIVE LINE	45	Battery		voltage/capacity (5 hour)	V/AH	12/27		12/27		
	49			manufacturer/type		NISSAN / K21		NISSAN / K21		
	50	Internal Combustion engine		maximum engine rated power	kW/rpm	42/2700		42/2700		
	51			maximum engine rated torque	Nm/rpm	160/2000		160/2000		
	52			number of cylinders/displacement	/cc	4/2065		4/2065		
	55	Transmission		type		Automatic		Automatic		
			speed	forward/backward		1 / 1		1 / 1		
57	Operating pressure		for attachment	MPa	12.7		12.7			

AL01/02-U

Loading Capacity

AL01A16JU/DU

Unit: kg

Load center		500mm	600	700	800	900	1000	1100	1200	1300	1400	1500
Mast name												
Single tire	2W270	1600	1440	1305	1195	1105	1025	955	895	845	795	755
	2W300	1600	1440	1305	1195	1105	1025	955	895	845	795	755
	2W330	1600	1440	1305	1195	1105	1025	955	895	845	795	755
	2W350	1600	1440	1305	1195	1105	1025	955	895	845	795	755
	2W370	1600	1440	1305	1195	1105	1025	955	895	845	795	755
	2W400	1550	1395	1265	1160	1070	990	925	870	815	770	730
	2W450	1500	1350	1225	1120	1035	960	895	840	790	745	705
	2W500	1400	1260	1145	1045	965	895	835	785	735	695	660
	2F300	1600	1440	1305	1195	1105	1025	955	895	840	795	750
	2F330	1600	1440	1305	1195	1105	1025	955	895	840	795	750
	2F350	1600	1440	1305	1195	1105	1025	955	895	840	795	750
	2F370	1600	1440	1305	1195	1105	1025	955	895	840	795	750
	2F400	1550	1395	1265	1160	1070	990	925	865	815	770	730
	3F385	1550	1395	1265	1160	1070	995	925	870	820	770	730
	3F430	1500	1350	1225	1125	1035	960	895	840	790	745	710
	3F475	1400	1260	1145	1050	965	900	840	785	740	700	660
	3F515	1350	1215	1105	1010	935	865	810	755	710	675	635
	3F550	1200	1080	980	900	830	770	720	675	635	600	565
	3F600	1050	945	860	785	725	675	630	590	555	525	495
3F650	950	855	775	710	655	610	570	535	500	475	450	
3F700	850	765	695	635	585	545	510	475	450	425	400	

APL02A25JU/DU

Unit: kg

Load center		500mm	600	700	800	900	1000	1100	1200	1300	1400	1500
Mast name												
Single tire	2W270	2500	2255	2055	1885	1745	1620	1515	1420	1340	1265	1200
	2W300	2500	2255	2055	1885	1745	1620	1515	1420	1340	1265	1200
	2W330	2500	2255	2055	1885	1745	1620	1515	1420	1340	1265	1200
	2W350	2500	2255	2055	1885	1745	1620	1515	1420	1340	1265	1200
	2W370	2500	2255	2055	1885	1745	1620	1515	1420	1340	1265	1200
	2W400	2500	2255	2055	1885	1745	1620	1515	1420	1340	1265	1200
	2W450	2350	2120	1930	1775	1640	1525	1425	1335	1260	1190	1130
	2W500	2250	2030	1850	1700	1570	1460	1365	1280	1205	1140	1080
	2F300	2500	2255	2055	1885	1745	1620	1515	1420	1340	1265	1200
	2F330	2500	2255	2055	1885	1745	1620	1515	1420	1340	1265	1200
	2F350	2500	2255	2055	1885	1745	1620	1515	1420	1340	1265	1200
	2F370	2500	2255	2055	1885	1745	1620	1515	1420	1340	1265	1200
	2F400	2450	2210	2015	1850	1710	1590	1485	1395	1310	1240	1175
	3F385	2500	2250	2050	1880	1735	1615	1505	1410	1330	1255	1190
	3F430	2400	2160	1965	1805	1665	1550	1445	1355	1275	1205	1145
	3F475	2200	1980	1805	1655	1525	1420	1325	1245	1170	1105	1045
	3F515	1950	1755	1600	1465	1355	1260	1175	1100	1035	980	930
	3F550	1800	1620	1475	1355	1250	1160	1085	1015	955	905	855
	3F600	1550	1395	1270	1165	1075	1000	935	875	825	780	740
3F650	1350	1215	1105	1015	935	870	815	760	720	680	645	
3F700	1000	900	820	750	695	645	600	565	530	500	475	

Truck Weight

Mast type	Mast name	AL01	AL02
		A16JU/DU	A25JU/DU
		Single	Single
Two stage (Wide View 2W)	2W270	2645	3545
	2W300	2665	3565
	2W330	2680	3590
	2W350	2700	3610
	2W370	2735	3650
	2W400	2760	3680
	2W450	2790	3715
	2W500	2825	3755
Two stage (Full free 2F)	2F 300	2670	3555
	2F 330	2695	3580
	2F 350	2710	3600
	2F 370	2750	3640
	2F 400	2775	3670
Three stage (Full free 3F)	3F 385	2815	3700
	3F 430	2845	3730
	3F 475	2875	3765
	3F 515	2905	3795
	3F 550	2955	3845
	3F 600	2995	3885
	3F 650	3040	3935
	3F 700	3090	3990
Truck weight without mast		2150	2930

AL01/02-U

Additional Truck Weight

FORKS

Unit:kg

Model(Capacity code)		AL01
		AL01A16JU/DU
Fork length	Less fork	-80
	850	-15
	920	-10
	1000	-5
	1070	0
	1100	0
	1150	+5
	1200	+5
	1220	+5
	1300	+10
	1370	+15
	1400	+15
	1520	+20
	1620	+25

Unit:kg

Model(Capacity code)		AL02
		APL02A25JU/DU
Fork length	Less fork	-100
	920	-10
	1000	-5
	1070	0
	1100	+5
	1150	+5
	1200	+10
	1220	+10
	1300	+20
	1370	+25
	1400	+25
	1520	+50
	1620	+60
	1800	+75
	2000	+90

CARRIAGE & BACKREST

Unit:kg

CARRIAGE	BACKREST	AL01
		AL01A16JU/DU
Standard	Standard	0
	High	+10
	Less	-20
Wide View	Standard	+10
	High	+20
	Less	-10
Wide	High	+40

Unit:kg

CARRIAGE	BACKREST	AL02
		APL02A25JU/DU
Standard	Standard	0
	High	+5
	Less	-25
Wide View	Standard	0
	High	+10
	Less	-25
Wide	High	+35

LPG SYSTEM

Unit:kg

		Type	AL01
			AL01A16JU/DU
Without Bottle, Bracket, Hose		LPGC	+5
Swing-open	Bottle+Bracket+Hose	LPGF	+40
	NO Bottle+Bracket+Hose	LPGG	+20
	NO Bottle+Bracket+NO Hose	LPGH	+20

Unit:kg

		Type	AL02
			APL02A25JU/DU
Without Bottle, Bracket, Hose		LPGC	+5
Swing-back	Bottle+Bracket+Hose	LPGA	+35
	NO Bottle+Bracket+Hose	LPGB	+15
	NO Bottle+Bracket+NO Hose	LPGE	+15
Swing-open	Bottle+Bracket+Hose	LPGF	+40
	NO Bottle+Bracket+Hose	LPGG	+20
	NO Bottle+Bracket+NO Hose	LPGH	+20
Swing-down	Bottle+Bracket+Hose	LPGP	+40
	NO Bottle+Bracket+Hose	LPGQ	+20
	NO Bottle+Bracket+NO Hose	LPGR	+20

TIRE WEIGHT

Unit:kg

AL01 Model(Capacity code)			16
Front	Single	Pneumatic	0
		Solid	+35
		Color Solid (White/Green)	+40
		Air Boss	+35
Rear	Single	Pneumatic	0
		Solid	+20
		Color Solid (White/Green)	+25
		Air Boss	+20

Unit:kg

AL02 Model(Capacity code)			25
Front	Single	Pneumatic	0
		Solid	+45
		Color Solid (White/Green)	+50
Rear	Single	Pneumatic	0
		Solid	+10
		Color Solid (White/Green)	+15

CABIN

Unit:kg

Model (Capacity code)	AL01	AL02
	16	25
Windshield	+20	+20
Canvas Cabin	+20	+20
Heater	+10	+10

Smooth - Run System

Unit:kg

Model (Capacity code)	AL02
	25
With Smooth Run System	+10
No Smooth Run System	0

AL01/02-U

Option Availability

		AL01 AL01A-16		AL02 APL02A-25	
		ECCS Gasoline	ECCS Dual	ECCS Gasoline	ECCS Dual
Engine	ECCS(Electronic Concentrated Control System) type				
	Speed & Power Selector				
	Caburetor type				
Cooling system	Corrugated fin type radiator				
	Radiator screen				
	Oil cooler (Radiator built-in type) (A/T model)				
	30% density LLC (Non-amine)				
	50% density LLC (Non-amine)				
Intake system	Super air intake system				
	Cyclone air cleaner				
Exhaust system	Standard muffler				
	Overhead exhaust muffler				
	Three way catalytic muffler				
	Diesel Particulate Filter (DPF)				
	Anti-fire spark muffler (cyclone)				
LPG system (Dual fuel) Swing-open	Complete system (with LPG bottle)				
	Without LPG bottle *				
	Without LPG bottle and hose with bottle bracket				
	Without LPG bottle, hose and bottle bracket				
Hydraulic control	2 spool valve				
	3 spool valve				
	4 spool valve				
	Single control lever				
	Double control lever				
	3 spool piping to carriage				
	4 spool piping to carriage				
	Quick release type piping connector				
Mast	2-stage outer chain wide view mast (2W)				
	2-stage full free mast (2F)				
	3-stage full free mast (3F)				
	Mast less				
	Mast protector				
	Tilt Cylinder Cover				
	Tilt Cylinder Boots				
	Tilt leveling system(2W mast only)				
Carriage & Backrest	Wide carriage				
	Extra wide carriage				
	6-roller carriage				
	ANSI type high backrest				
	Wide backrest				
	Extra wide backrest				
Fork	Without backrest				
	Long fork				
Steering system	Tilt steering				
	Hydrostatic power steering system				
	Steering knob				
	Steering synchronizer				

* Swing open is standard.

...Standard ...Option

	Item	AL01 AL01A-16		AL02 APL02A-25	
		ECCS Gasoline	ECCS Dual	ECCS Gasoline	ECCS Dual
Body	Power train floating				
	Rain guard (Vinyl type)				
	Rain guard (Resin type)				
	Canvas cabin				
	Damper stay for top panel opening				
	Top panel lock with key				
	Rearview mirrors				
Seat	Restraint seat with suspension				
	Seat less				
Meters & Gauge	Fuel gauge				
	Water temperature gauge				
	Hour meter (key on counting)				
Lights & Alarm	Headlights (no guard)				
	Back-up buzzer				
	Turn signal lamps				
	Rear combination lamps				
	Rear working light				
	Rotating light				
	Speedometer				
	Battery charge warning lamp				
	Torque converter fluid temp. warning lamp (A/T model)				
	Air cleaner plugging warning lamp				
	Parking brake warning buzzer				
	Forward/Reverse interlock warning lamp (A/T model)				
	Seatbelt warning lamp				
	Clutch wearing warning lamp (M/T model)				
	Radiator fluid level warning lamp				
	Fuel filter warning lamp (Diesel model)				
	Mast interlock warning lamp				
LPG low fuel warning lamp					
3-stage lighting switch					
Brake	Toggle joint type parking brake				
	Toggle joint type parking brake with warning buzzer				
Tires & Rims	J-lug tire(Textile)				
	Pneumatic type solid tire				
	AirBoss tire				
	Double tire				
	Built-in bolt type disc wheels				
	Spare tires (1 for front and 1 for rear)				
Tool	Tool kit				
	Tool kit with jack				
Rust-proof specifications					
Label	English				
	German				
	French				
	Spanish				

AL01/02-U

Fork Availability

		...Standard	...Option
Length mm		AL01 16	
Fork	Without fork		
	850		
	920		
	1000		
	1070		
	1100		
	1150		
	1200		
	1220		
	1300		
	1370		
	1400		
	1520		
	1620		

		...Standard	...Option
Length mm		AL02 25	
Fork	Less fork		
	920		
	1000		
	1070		
	1100		
	1150		
	1200		
	1220		
	1300		
	1370		
	1400		
	1520		
	1620		
	1800		
2000			

Fork Dimensions

	Width (W) × thickness (T)	
	AL01	
	AL01A16JU/DU	
All Length	100 × 35	

	Width (W) × thickness (T)	
	AL02	
	APL02A25JU/DU	
All Length	100 × 40	

Carriage & Backrest Dimensions

Carriage(NISSAN MAST)

Model		AL01 AL01A16JU/DU
Class		
Numbers of rollers (not include side rollers)		4
Carriage width(W)	Standard	920
	Wide	1335
	Extra wide	
Max. fork spread	Standard	910
	Wide	1325
	Extra wide	

Model		AL02 APL02A25JU/DU
Class		
Numbers of rollers (not include side rollers)		6
Carriage width(W)	Standard	1020
	Wide	1335
	Extra wide	
Max. fork spread	Standard	1015
	Wide	1330
	Extra wide	

Backrest

Model		AL01 AL01A16JU/DU
Backrest height(H) mm(in)	Standard	910
	High backrest	1220
	Wide backrest	1220
	Extra wide backrest	
Backrest width of(L) mm(in)	Standard & high backrest	945
	Wide backrest	1360
	Extra wide backrest	
Plate thickness(T)		12

Model		AL02 APL02A25JU/DU
Backrest height(H) mm(in)	Standard	1005
	High backrest	1215
	Wide backrest	1215
	Extra wide backrest	
Backrest width of(L) mm(in)	Standard & high backrest	1045
	Wide backrest	1350
	Extra wide backrest	
Plate thickness(T)		12

Tire Size

Tire		Model		...Standard	...Option
		AL01		16	
Front	Single	Tire Size (STD)		6.00-9-12PR	
		Rim Size (STD)		4.00E x 9TB	
	Type	J-lug textile			
		Pneumatic type solid		6.00-9	
Rear	Single	Tire Size (STD)		5.00-8-8PR	
		Rim Size (STD)		3.00D x 8DT	
	Type	J-lug textile			
		Pneumatic type solid		5.00-8	

Tire		Model		...Standard	...Option
		AL02		25	
Front	Single	Tire Size (STD)		21 x 8-9-14PR	
		Rim Size (STD)		6.00E x 9TB	
	Type	J-lug textile			
		Pneumatic type solid		21 x 8-9	
Rear	Single	Tire Size (STD)		18 x 7-8-14PR	
		Rim Size (STD)		4.33R x 8TB	
	Type	J-lug textile			
		Pneumatic type solid		18 x 7-8	

Tool Options

			AL01
			16
Tool kit	Wrench	8 x 10	
		10 x 12	
		12 x 14	
		14 x 17	
		13 x 17	
	Screddrivers		
	Wheel nut wrench		
	Thermometer		
	Gravi-meter		
	Tool bag		
Jack			

			AL02
			25
Tool kit	Wrench	8 x 10	
		10 x 12	
		12 x 14	
		14 x 17	
		13 x 17	
	Screddrivers		
	Wheel nut wrench		
	Thermometer		
	Gravi-meter		
	Tool bag		
Jack			

AL01/02-U

Unit Specification

		AL01-U		
ENGINE SYSTEM	Model	K15		
	Classification	ECCS Gasoline	ECCS Dual	
	Cycle	4		
	Type	4 cylinder in-line OHV		
	Displacement	cm ³	1486	
	Bore x Stroke	mm	75.5 x 83.0	
	Compression ratio	9		
	Air cleaner	Cyclone type, dry element		
	Governor			
	Oil filter	Cartridge type		
	Oil pump	Gear type		
	Injection pump	Electronic Fuel Injection type (GAS:MPI / LPG:SPI)		
	Fuel pump	Diaphragm type		
	Water pump	Centrifuge type		
	Radiator	Corrugated fin type		
	Battery	12V-27AH		
Alternator	12V-35AH			
Starter motor	12V-1.2kW (Reduction type)			
TRANSMISSION	Automatic	Torque converter type	3-element, 1-stage, 2-phase	
		Transmission type	Constant mesh, Power shift, One forward, One reverse speed. With neutral start switch. Wet multi-disc hydraulic clutch.	
STEERING SYSTEM	Type	Fully hydrostatic power steering		
	Steering unit	ORBITROL		
	Power cylinder	Mounted on steering axle		
	Steering wheel	Tilting type		
DRIVE AXLE	Type	Full floating		
	Final gear	Hypoid gear		
STEERING AXLE	Type	Center pin system		
	Suspension system	Rubber bushing mounted		
BRAKE SYSTEM	Service brake	Hydraulic, Duo-servo with auto-adjuster. Operates on drive wheels		
	Parking brake	Dead point rock type, Mechanically operates on drive wheels		
FRAME & BODY	Frame structure	Integral, All welded frame		
	Overhead guard	Strength conforms to ISO, ANSI standards		
	Fuel tank	41 liters		
	Hydraulic oil tank	26 liters Upper limit on level gauge		
HYDRAULIC SYSTEM	Hydraulic oil pump	Gear type, used for hoisting and power steering		
	Control valve	Sectional type with tilt lock valve		
	Lift cylinder	With flow regulator valve		
	Oil filter	150 mesh suction filter, 20 micron filter on the return circuit		
LOADING SYSTEM	Mast	All roller mast, Grease sealed roller bearing		
	Carriage	Class II		
	Forks	Forged alloy steel, Hook type, Conforms to ITA standards		
INSTRUMENTS	Gauge & meter	Torque converter fluid temperature warning lamp / Fuel gauge / Water temperature gauge / Hour meter		
	Light	Battery charge warning lamp / Engine oil pressure warning light / PKB warning lamp / Seat belt warning lamp / Neutral position lamp / AT interlock operating lamp / LPG low fuel warning lamp / Mast interlock operating lamp		
	Switch & knob	Lighting switch/Starter switch		

Unit Specification

		APL02-U		
ENGINE SYSTEM	Model	K21		
	Classification	ECCS Gasoline	ECCS Dual	
	Cycle	4		
	Type	4 cylinder in-line OHV		
	Displacement	cm ³	2065	
	Bore x Stroke	mm	89 x 83	
	Compression ratio	8.7		
	Air cleaner	Cyclone type, dry element		
	Governor			
	Oil filter	Cartridge type		
	Oil pump	Gear type		
	Injection pump	Electronic Fuel Injection type (GAS:MPI / LPG:SPI)		
	Fuel pump	Diaphragm type		
	Water pump	Centrifuge type		
	Radiator	Corrugated fin type		
	Battery	12V-27AH		
Alternator	12V-35AH			
Starter motor	12V-1.2kW (Reduction type)			
TRANSMISSION	Automatic	Torque converter type	3-element, 1-stage, 2-phase	
		Transmission type	Constant mesh, Power shift, One forward, One reverse speed. With neutral start switch. Wet multi-disc hydraulic clutch.	
STEERING SYSTEM	Type	Fully hydrostatic power steering		
	Steering unit	ORBITROL		
	Power cylinder	Mounted on steering axle		
	Steering wheel	Tilting type		
DRIVE AXLE	Type	Full floating		
	Final gear	Hypoid gear		
STEERING AXLE	Type	Center pin system		
	Suspension system	Rubber bushing mounted		
BRAKE SYSTEM	Service brake	Hydraulic, Duo-servo with auto-adjuster. Operates on drive wheels		
	Parking brake	Dead point rock type, Mechanically operates on drive wheels		
FRAME & BODY	Frame structure	Integral, All welded frame		
	Overhead guard	Strength conforms to ISO, ANSI standards		
	Fuel tank	50 liters		
	Hydraulic oil tank	38 liters Upper limit on level gauge		
HYDRAULIC SYSTEM	Hydraulic oil pump	Gear type, used for hoisting and power steering		
	Control valve	Sectional type with tilt lock valve		
	Lift cylinder	With flow regulator valve		
	Oil filter	150 mesh suction filter, 20 micron filter on the return circuit		
LOADING SYSTEM	Mast	All roller mast, Grease sealed roller bearing		
	Carriage	Class II		
	Forks	Forged alloy steel, Hook type, Conforms to ITA standards		
INSTRUMENTS	Gauge & meter	Torque converter fluid temperature warning lamp / Fuel gauge / Water temperature gauge/Hour meter		
	Light	Battery charge warning lamp / Engine oil pressure warning light / PKB warning lamp / Seat belt warning lamp / Neutral position lamp / AT interlock operating lamp / LPG low fuel warning lamp / Mast interlock operating lamp		
	Switch & knob	Lighting switch/Starter switch		